

FIDDLETOWN  
FAVORITE  
±120 AC - FOR SALE  
AMADOR COUNTY

**PURCHASE PRICE:**  
~~\$320,000~~ **\$295,000**



**TRI** *Outdoor Properties*

LAND BROKERAGE | Recreational • Agricultural • Conservation  
A Division of TRI Commercial Real Estate Services, Inc.



The information in this document was obtained from sources we deem reliable; however, no warranty or representation, expressed or implied, is made as to the accuracy of the information contained herein.



# Property Info ~ Fiddletown Favorite, Amador County, CA

Address: American Flat Road,  
Fiddletown, Ca 95629

APN: 015-050-009, 015-050-010, & 015-050-012

Zoning: R1A Single Family Residential & Agriculture

Elevation: Approximately 1,700 to 1,900 Feet

Latitude: 38.283371

Longitude: -120.450873

MLS #: 20028482

**Acres: ±120 Acres**

**Price: \$295,000**

Improvements: Perimeter Fenced

Terms: Cash or submit.

Description: Beautiful scenic property consisting of 3 parcels of land totaling 120 acres. Nice views and tons of wild poppy and other wild flowers. Ideal to take someone special on a picnic and forget the rest of the world exists. Good deer, quail and wild turkey hunting opportunities. Close to town. Private and fenced. Seasonal creek runs through the to property.

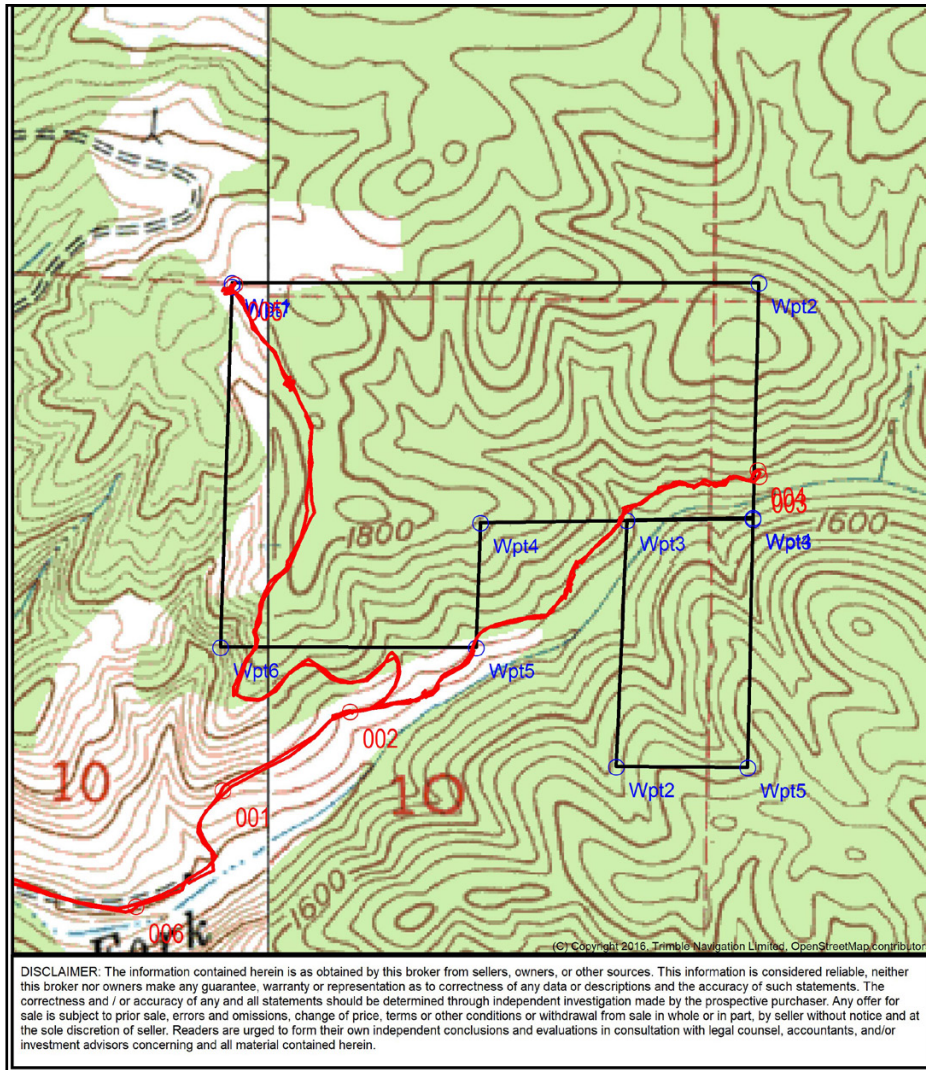
Directions: From Plymouth go east on Fiddletown Rd until you get to Fiddletown. In town turn right on American Flat Road to gate. Call listing agent.



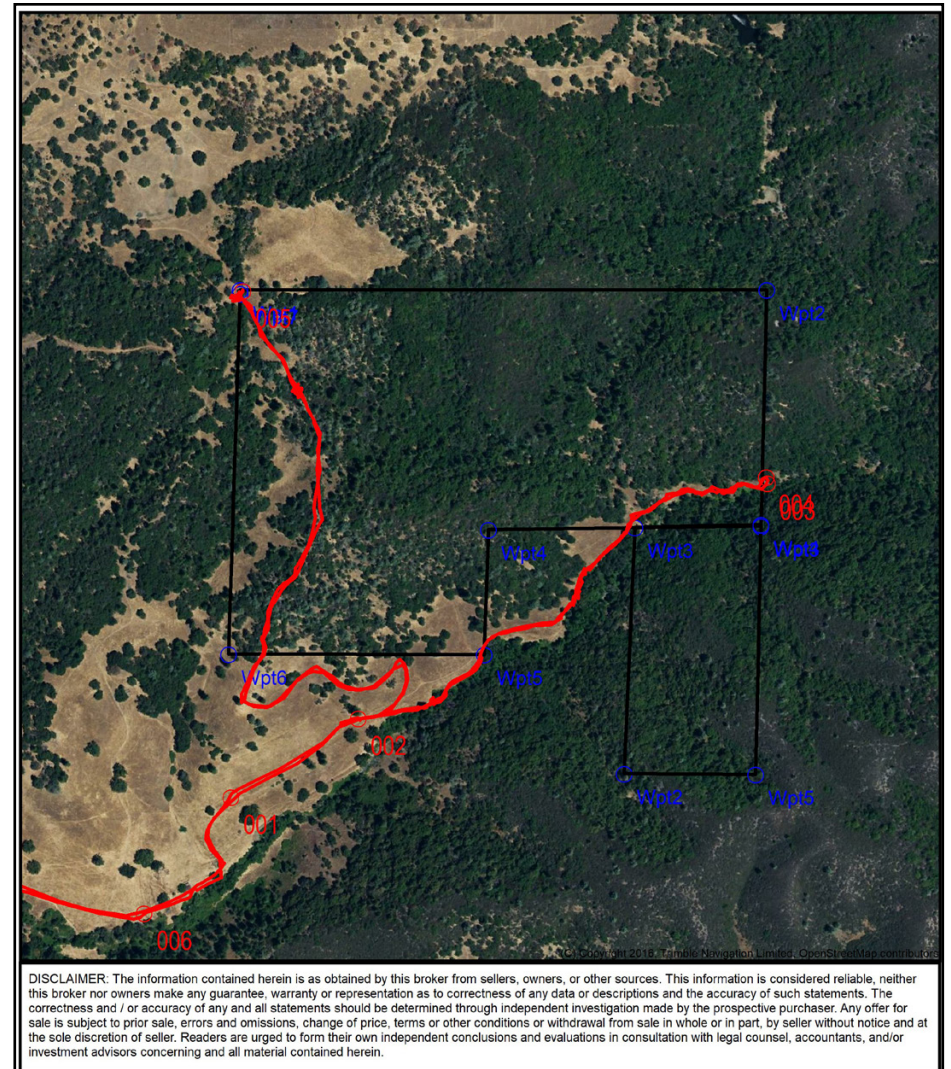


# Property Maps ~ Fiddletown Favorite, Amador County, CA

## Topo Map



## Aerial Map

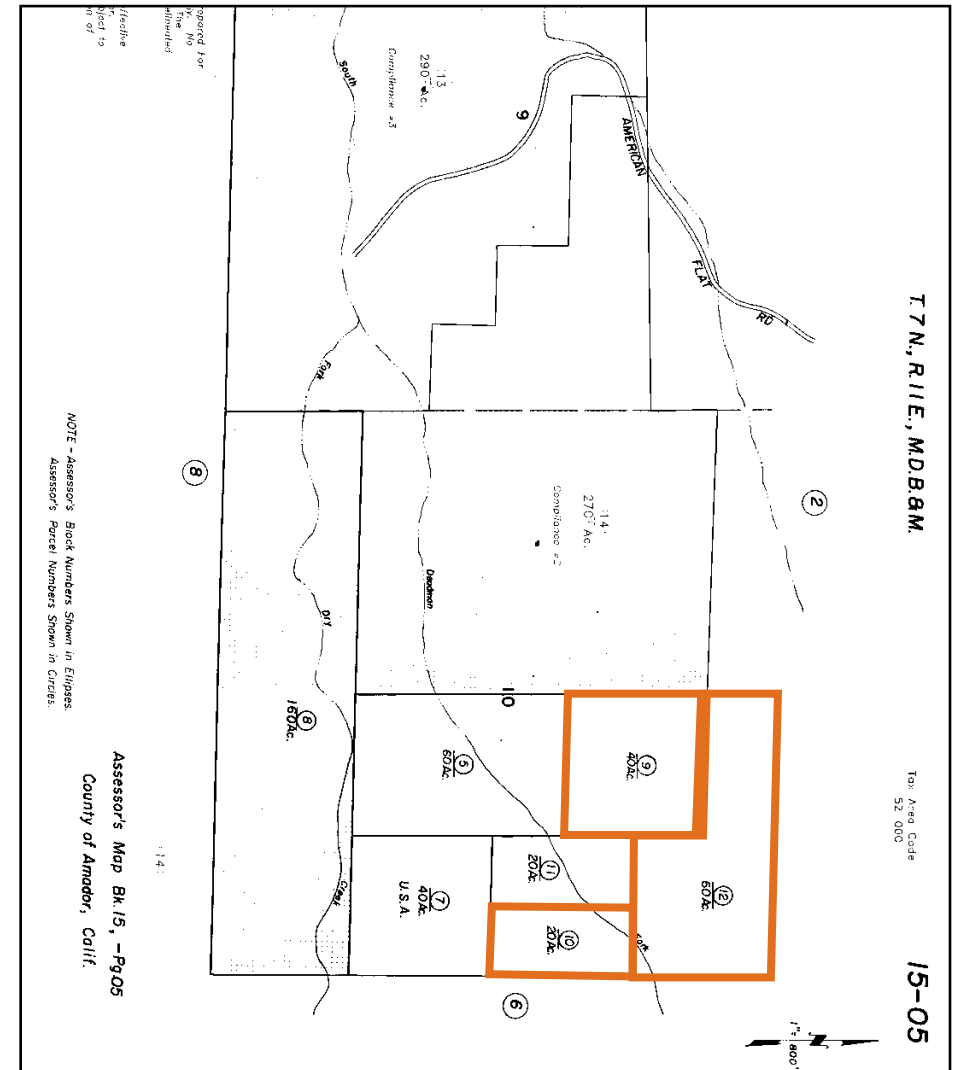




# Parcel Maps ~ Fiddletown Favorite, Amador County, CA



**APNs: 015-050-009, 010, & 012  
±120 ACRES TOTAL**



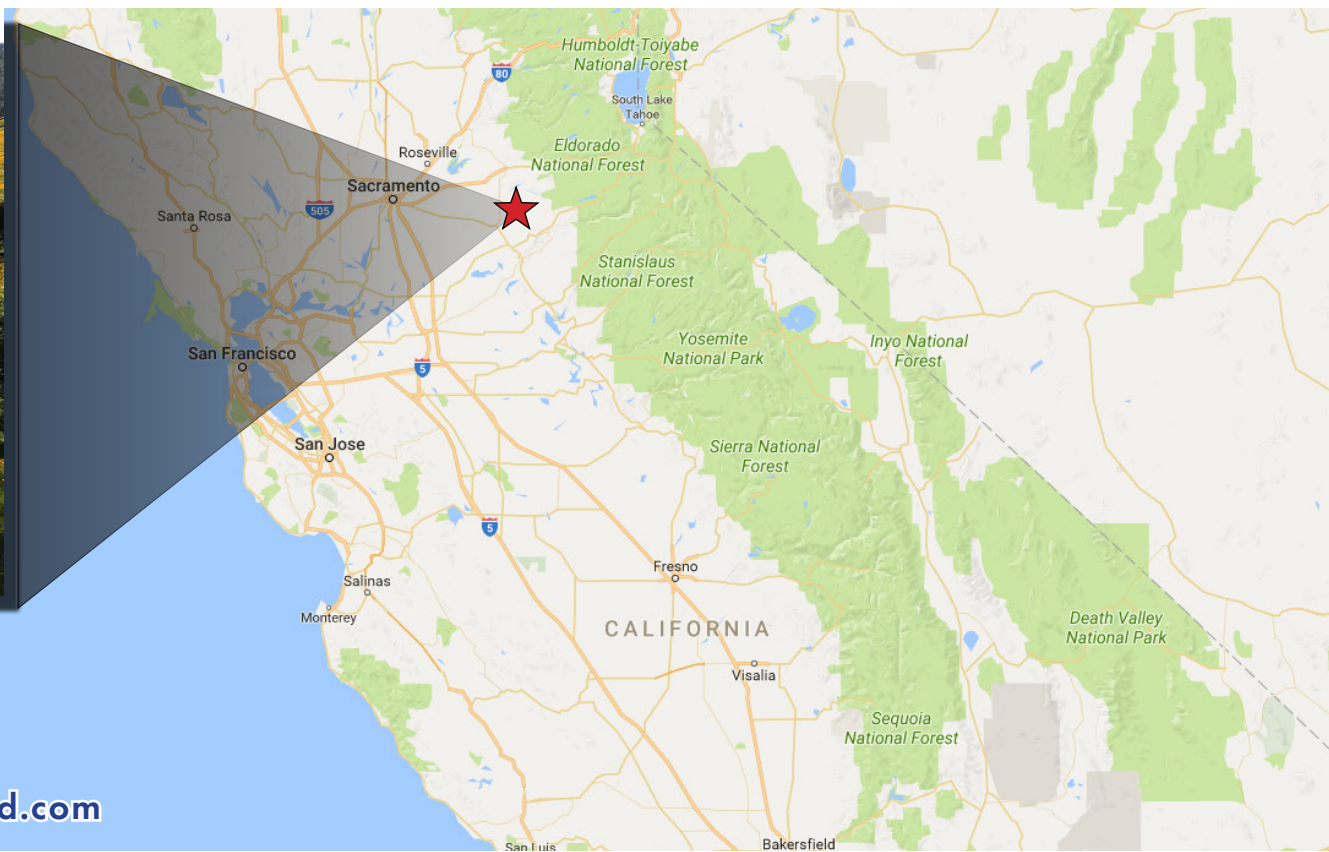


# Property Photos ~ Fiddletown Favorite, Amador County, CA





# Property Summary ~ Fiddletown Favorite, Amador County, CA



**For Sale: ±120 AC**  
**\$295,000**

**For Additional information visit [www.Land.com](http://www.Land.com)**

For More Information Contact:



**Mike Kuppenbender**, ALC, CCIM, SIOR  
DRE License #: 00811112  
[mkupp@tricommercial.com](mailto:mkupp@tricommercial.com)  
916.960.5709

**TRI Outdoor Properties**

532 Gibson Drive, Suite 200, Roseville, CA 95678

LAND BROKERAGE | Recreational · Agricultural · Conservation

A Division of TRI Commercial Real Estate Services, Inc.

The information in this document was obtained from sources we deem reliable; however, no warranty or representation, expressed or implied, is made as to the accuracy of the information contained herein.