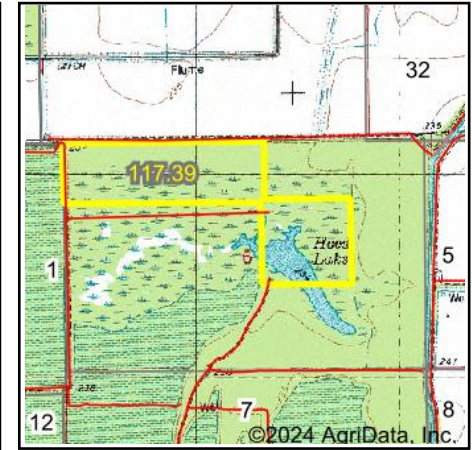
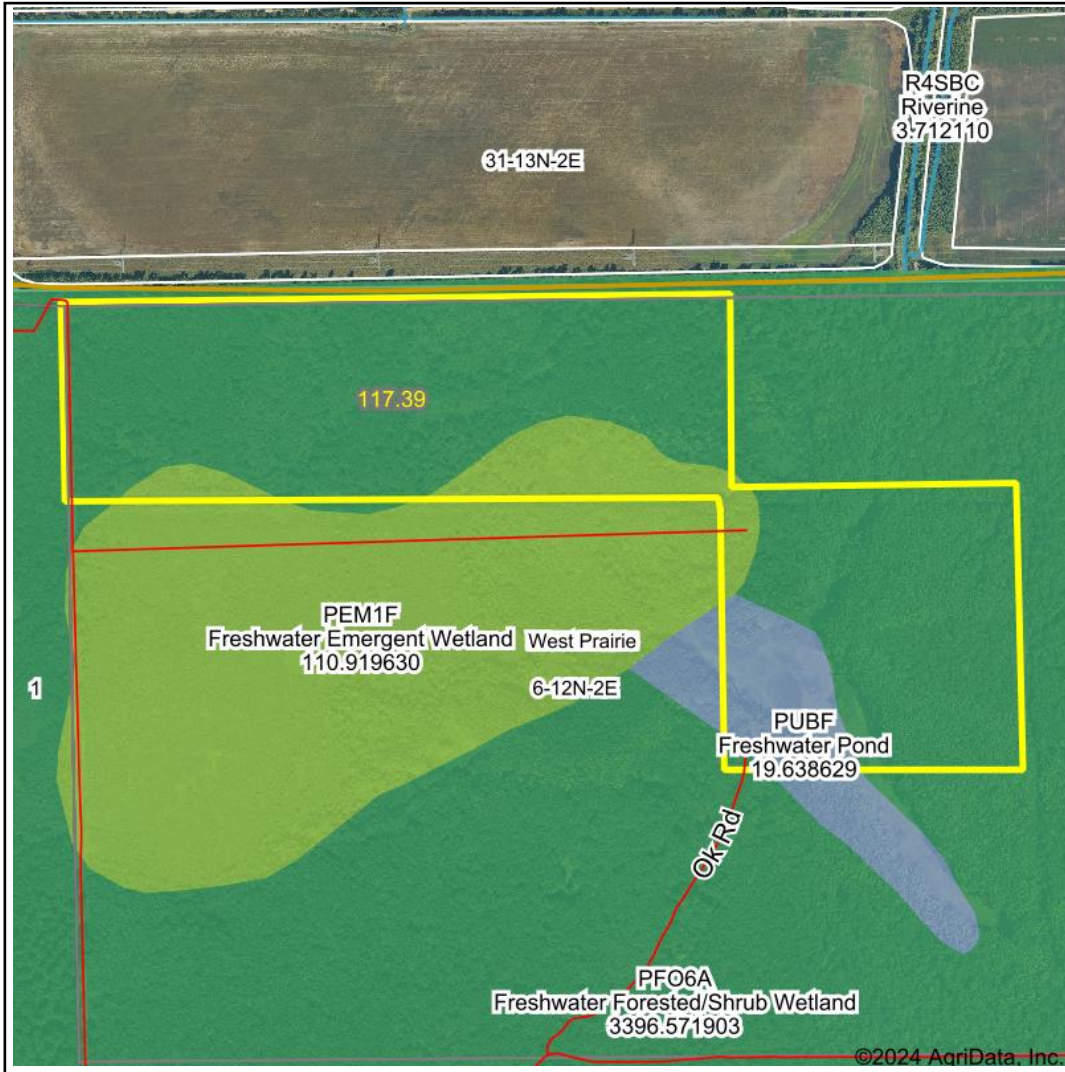


# Wetlands Map



State: **Arkansas**  
 Location: **6-12N-2E**  
 County: **Poinsett**  
 Township: **West Prairie**  
 Date: **5/17/2024**

Maps Provided By:  
  
 CUSTOMIZED ONLINE MAPPING  
 © AgriData, Inc. 2023 www.AgriDataInc.com



0ft 1064ft 2129ft

Classification Code	Type	Acres
PSS1F	Freshwater Forested/Shrub Wetland	70.05
PFO6A	Freshwater Forested/Shrub Wetland	25.78
PEM1F	Freshwater Emergent Wetland	12.47
PUBF	Freshwater Pond	9.10
Total Acres		117.40

Data Source: National Wetlands Inventory website. U.S. DoI, Fish and Wildlife Service, Washington, D.C. <http://www.fws.gov/wetlands/>