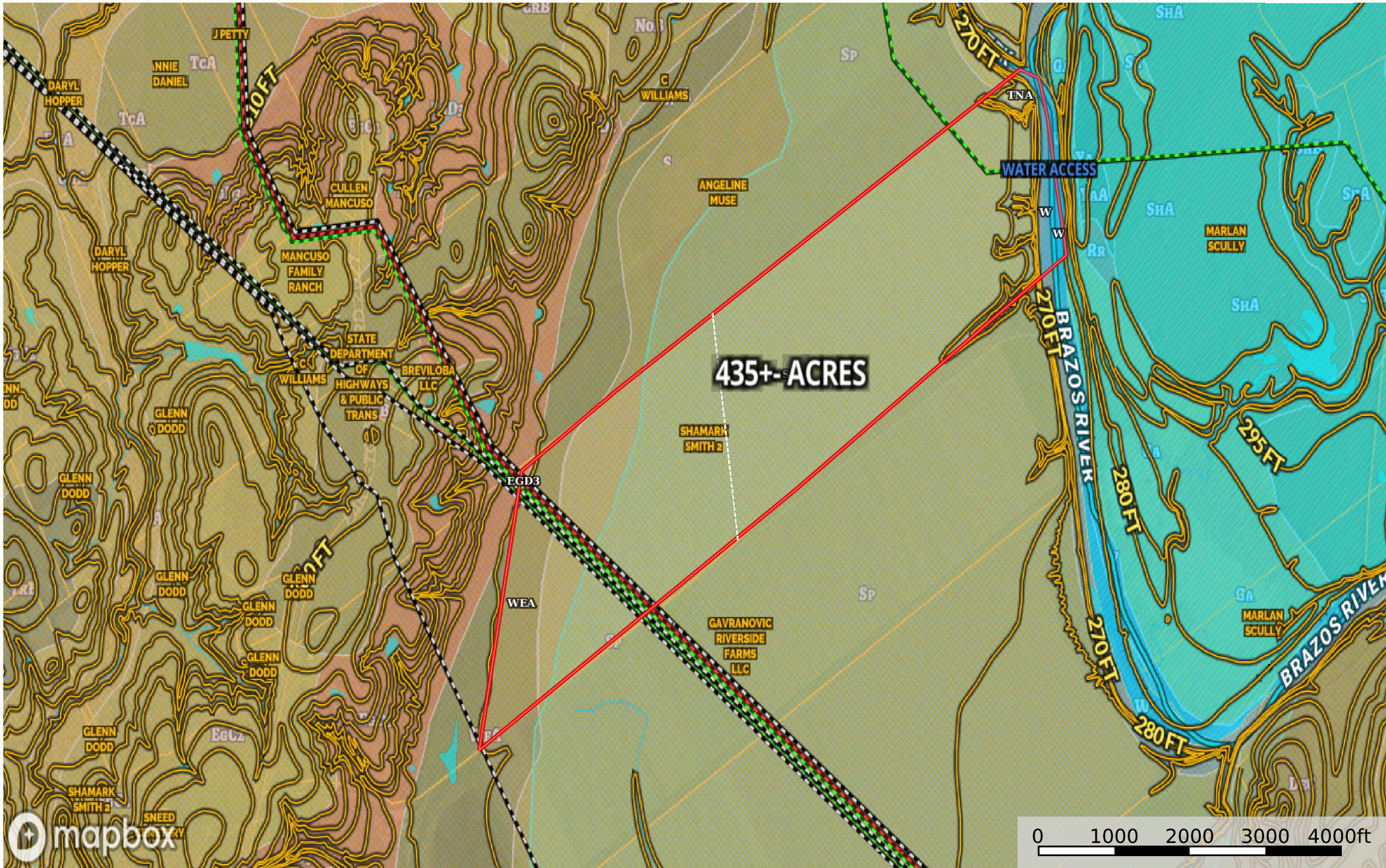


TBD Farm Road 2027, Cameron, TX, 76520
Milam County, Texas, 435 AC +/-



- Fence
- Water Access
- Land For Sale
- 100 Year Floodplain
- 500 Year Floodplain
- Floodway
- Special
- Unmapped/ Not Included
- Stream, Intermittent
- River/Creek
- Water Body
- Crude Oil
- Natural Gas
- Other

|  Land For Sale 398.85 ac

SOIL CODE	SOIL DESCRIPTION	ACRES	%	CPI	NCCPI	CAP
Sp	Ships clay, 0 to 1 percent slopes, rarely flooded	348.43	87.36	0	51	3s
WeA	Weswood silty clay loam, 0 to 1 percent slopes, occasionally flooded	35.58	8.92	0	48	2w
W	Water	11.07	2.78	0	-	8
TnA	Tinn clay, 0 to 1 percent slopes, frequently flooded	3.11	0.78	0	46	5w
EgD3	Edge-Gullied land complex, 2 to 8 percent slopes, eroded	0.66	0.17	0	5	6e
TOTALS		398.85(*)	100%	-	49.2	3.07









(*) Total acres may differ in the second decimal compared to the sum of each acreage soil. This is due to a round error because we only show the acres of each soil with two decimal.

Capability Legend

Increased Limitations and Hazards

Decreased Adaptability and Freedom of Choice Users

Land, Capability

								
	1	2	3	4	5	6	7	8
'Wild Life'	•	•	•	•	•	•	•	•
Forestry	•	•	•	•	•	•	•	
Limited	•	•	•	•	•	•	•	
Moderate	•	•	•	•	•	•		
Intense	•	•	•	•	•			
Limited	•	•	•	•				
Moderate	•	•	•					
Intense	•	•						
Very Intense	•							

Grazing Cultivation

(c) climatic limitations (e) susceptibility to erosion

(s) soil limitations within the rooting zone (w) excess of water