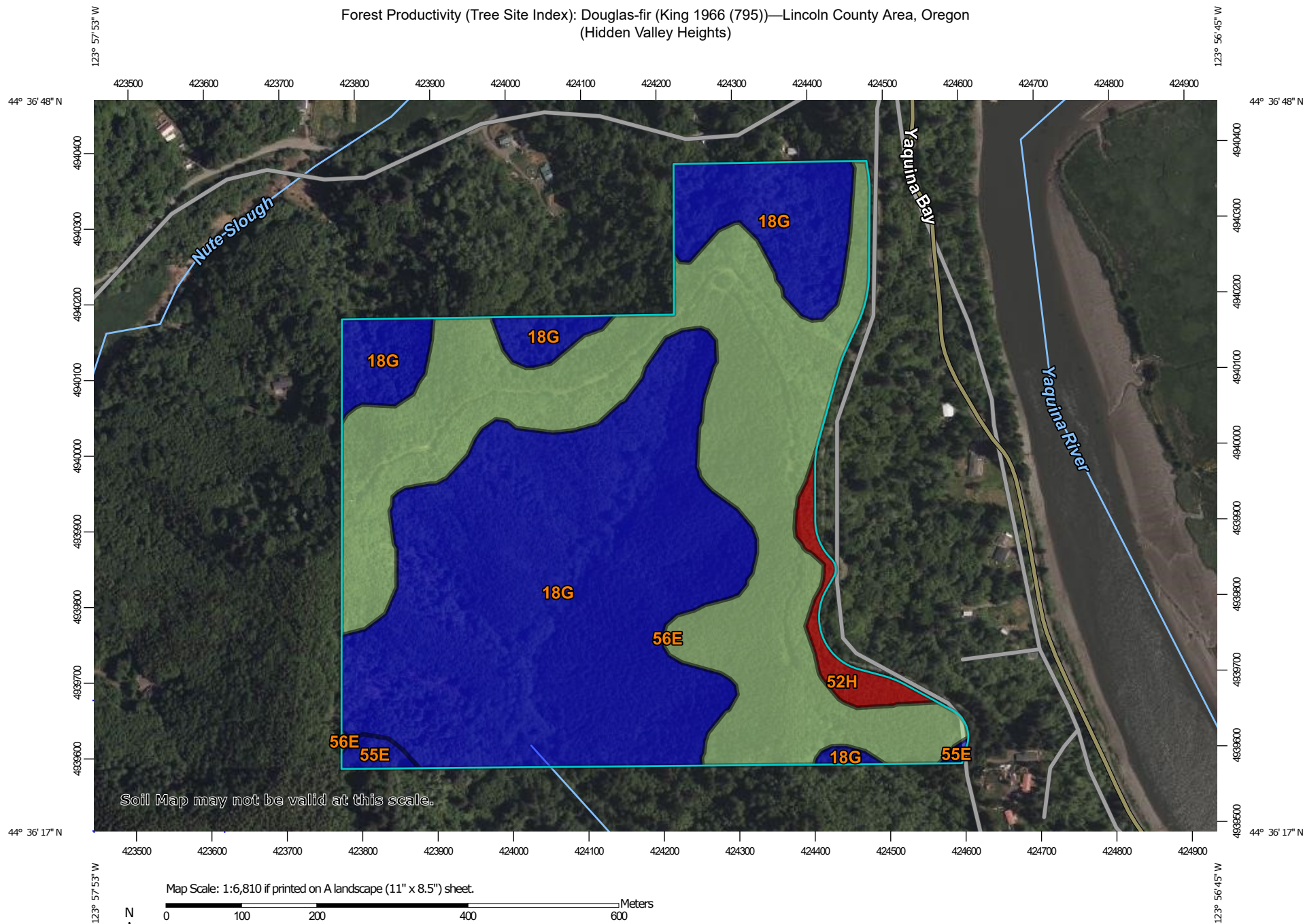


Forest Productivity (Tree Site Index): Douglas-fir (King 1966 (795))—Lincoln County Area, Oregon
(Hidden Valley Heights)



Forest Productivity (Tree Site Index): Douglas-fir (King 1966 (795))

Map unit symbol	Map unit name	Rating (feet)	Acres in AOI	Percent of AOI
18G	Fendall-Templeton silt loams, 35 to 60 percent slopes	125	64.6	57.3%
52H	Reedsport-Tolovana complex, 60 to 85 percent slopes	116	2.5	2.2%
55E	Templeton-Fendall silt loams, 5 to 35 percent slopes	125	1.0	0.9%
56E	Tolovana-Reedsport complex, 3 to 35 percent slopes	124	44.7	39.6%
Totals for Area of Interest			112.8	100.0%

Description

The "site index" is the average height, in feet, that dominant and codominant trees of a given species attain in a specified number of years. The site index applies to fully stocked, even-aged, unmanaged stands.

This attribute is actually recorded as three separate values in the database. A low value and a high value indicate the range of this attribute for the soil component. A "representative" value indicates the expected value of this attribute for the component. For this attribute, only the representative value is used.

Rating Options

Units of Measure: feet

Tree: Douglas-fir

Site Index Base: King 1966 (795)

Aggregation Method: Dominant Component

Component Percent Cutoff: None Specified

Tie-break Rule: Higher

Interpret Nulls as Zero: No