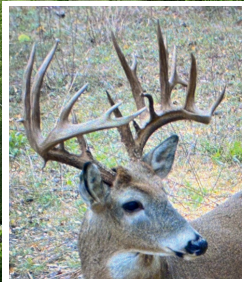
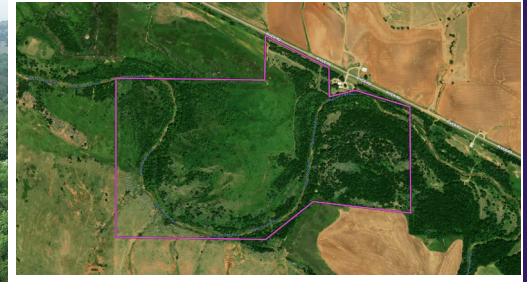


LAND FOR SALE

320 ± ACRES | BARBER COUNTY, KANSAS



Legal Description: Part of 19-31-13W & 24-31-14W in Barber Co., KS (full legal description to be determined by survey).

Location: From Medicine Lodge, KS, travel west on River Rd for approximately 11½ miles. Turn south to the property.

Description: 320 ± acres, depending on survey results. Fenced on 1.7 miles of the beautiful Medicine River that runs through the entire length of the property. Located in arguably the best trophy deer hunting in Barber County and all of South Central Kansas. Well known among trophy deer hunters for consistently producing trophy bucks. Heavy mature timber and underbrush. Property includes 2 Redneck shooting houses, 2 Outback Feeders and several tree stands.

Taxes: 2023 - \$1,287.16 Taxes are pending per the survey. Taxes will be prorated to the date of closing.

Possession: Buyer will receive possession upon closing.

Minerals: Minerals are reserved.

Listed at \$1,650,000

Ralph Lilja · REALTOR®

12140 W. K-42 Hwy · Wichita, KS 67227

(620) 243-3244 · ralph@genefrancis.com



GENE
FRANCIS
& ASSOCIATES

REAL ESTATE BROKERS & AUCTIONEERS