



FARM & RANCH

19+ ACRE TRACT IN BROCK ISD

TBD Ellis Road – Weatherford, TX



STEPHEN
REICH GROUP
WILLIAMS TREW REAL ESTATE

WilliamTrew[☆]
A DIVISION OF EBBY HALLIDAY REAL ESTATE, INC.

LISTED BY **STEPHEN REICH GROUP** OF WILLIAMS TREW REAL ESTATE

PROPERTY SUMMARY

DESCRIPTION

Brock ISD!!! One of a kind 19 plus acre tract conveniently located to Weatherford. This gorgeous parcel offers some great home sites, multiple mature live oak trees and other hardwoods. You will be shocked by the amazing views and the tranquility that is offered by just how private this place actually is. A water well and electricity have already been established, and there is no restriction on housing type. This is a perfect opportunity to Buy Dirt, enjoy it and live on it today, then build the home of your dreams later. **Property cannot be subdivided. No Commercial use, no RV or Mobile Home parks. One RV or mobile home is allowed.**

LOCATION

City	Weatherford
County	Parker
Schools	Brock ISD
Driving Directions	Take the Dennis exit on IH-20. Go north on Dennis. Left on Ellis. The property will be on the right.

OFFER SUMMARY

List Price	\$525,000
Lot Size	19.62 acres
Utilities	Electric Connected, Well

HIGHLIGHTS

- 19.62 ACRES
- WATER WELL
- AG EXEMPT
- ELECTRICITY ALREADY ESTABLISHED
- GREAT HOME SITES
- NO RESTRICTIONS ON HOUSING TYPE

LISTING PRESENTED BY:



STEPHEN REICH
817-597-8884
stephen.reich@williamstrew.com



PROPERTY WEBSITE LINK:
stephenreichgroup.com/20348909



PARKER COUNTY OFFICE
400 Shops Boulevard, Ste. 200
Willow Park, TX 76087

FARM & RANCH • RESIDENTIAL • COMMERCIAL-DEVELOPMENT • LAND

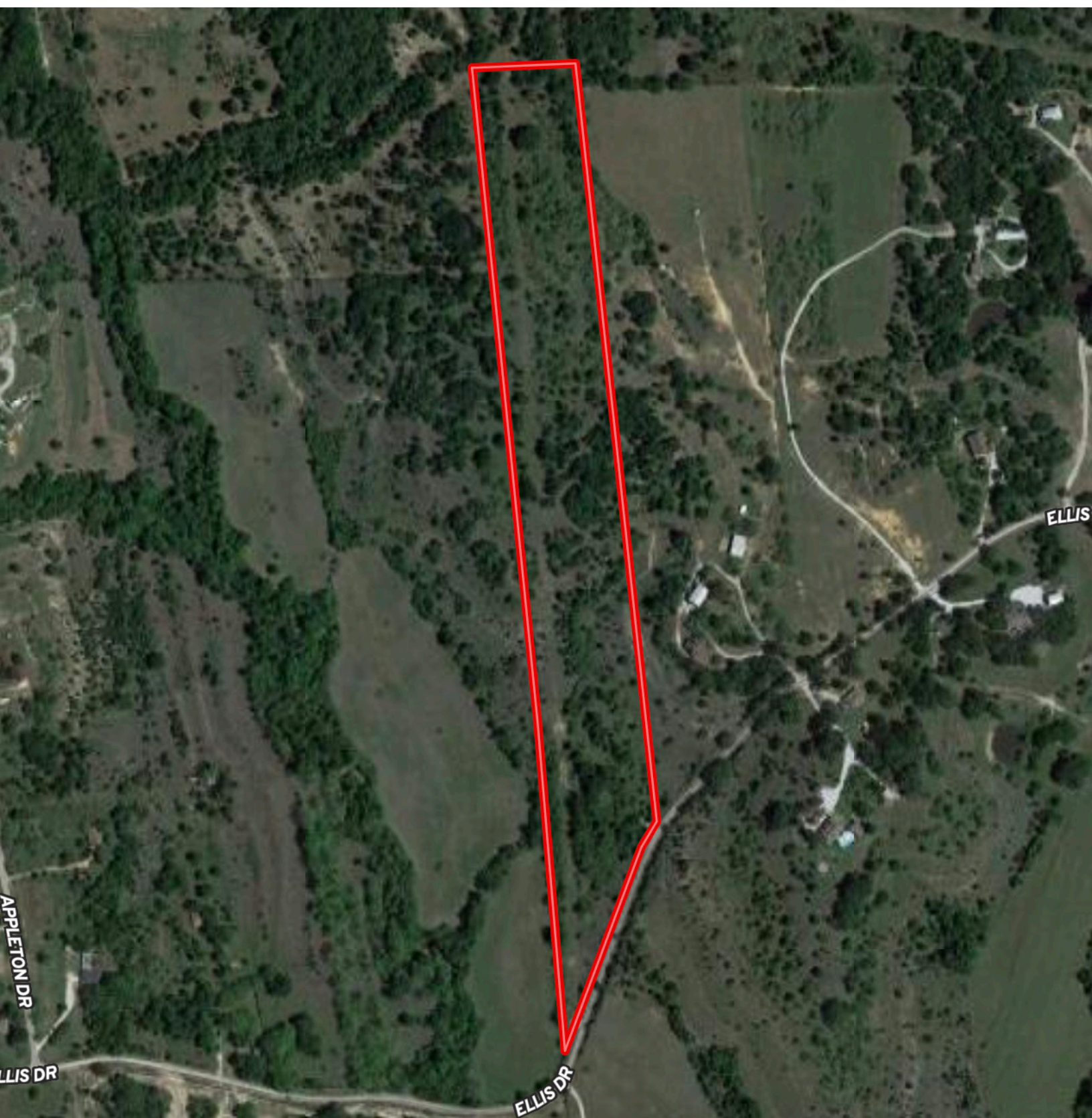
PROPERTY PHOTOS



PROPERTY PHOTOS



AERIAL MAP



STEPHEN REICH – 817.597.8884



WilliamsTrew 
A DIVISION OF EBBY HALLIDAY REAL ESTATE, INC.

CONTOUR LINES & FLOODPLAIN

