



**SMALLTOWN**  
HUNTING PROPERTIES  
& REAL ESTATE<sup>SM</sup>

**60± ACRES**  
**WHITFIELD COUNTY, GA**  
**\$300,000**

OFFICE (769) 888-2522 | [WWW.SMALLTOWNPROPERTIES.COM](http://WWW.SMALLTOWNPROPERTIES.COM)



# THE WHITFIELD 60

## PROPERTY PROFILE

### LOCATION:

- Rudy Drive in Rocky Face, GA
- 5± Miles to Dalton
- 13± Miles to Ringgold
- 18± Miles to Calhoun
- 27± Miles to Chattanooga, TN
- 78± Miles to Atlanta

### PROPERTY USE:

- Hunting
- Recreation
- Investment
- Home/Cabin Site

### COORDINATES:

- 34.71305, -85.0487

### PROPERTY INFORMATION:

- 60± Acres
- Spring Fed Creek
- Mature Harwood Timber
- Borders US National Forest

### TAX INFORMATION:

- \$395.6
- 13-001-10-000



**SMALLTOWN**  
HUNTING PROPERTIES  
& REAL ESTATE<sup>SM</sup>

**JUSTIN HASTY**

LAND SPECIALIST

C: 706-671-4554

O: 769-888-2522

[justin@smalltownproperties.com](mailto:justin@smalltownproperties.com)

P.O. Box 340 - Rocky Face, GA 30740

[smalltownproperties.com](http://smalltownproperties.com)

Information is believed to be accurate but not guaranteed.





# WELCOME TO THE WHITFIELD 60

THE WHITFIELD 60 IS A GREAT RECREATIONAL TRACT WITH MATURE HARDWOOD TIMBER ON THE SIDE OF THE RIDGE. This 60± acre tract is conveniently located just 10-15 minutes from downtown Dalton, GA off Rudy Drive in Rocky Face. The Whitfield County property is bordered by National Forest lands on the western boundary and features a couple of streams that run out of the mountainside. The hardwood timber consists mostly of mountain oaks but red and white oaks are also scattered about. There are multiple options to back up to thousands of acres to hunt. Access the government woods from your own private place or build a cabin/home and have a secluded tract, the options are endless.

**Call Justin Hasty today to schedule a private tour of the Whitfield 60.**



**SMALLTOWN**  
HUNTING PROPERTIES  
& REAL ESTATE<sup>SM</sup>

**JUSTIN HASTY**

LAND SPECIALIST

C: 706-671-4554

O: 769-888-2522

[justin@smalltownproperties.com](mailto:justin@smalltownproperties.com)

P.O. Box 340 - Rocky Face, GA 30740

[smalltownproperties.com](http://smalltownproperties.com)

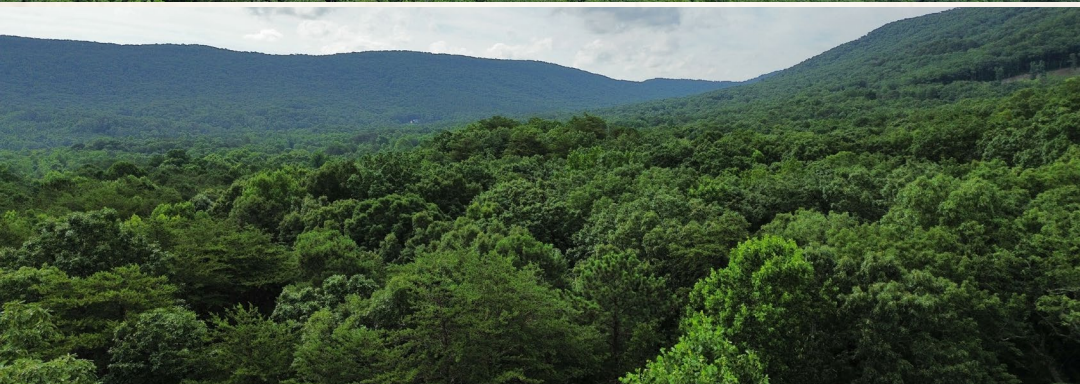
Information is believed to be accurate but not guaranteed.





**60 ± ACRES**

**WHITFIELD COUNTY, GEORGIA**



**SMALLTOWN**  
HUNTING PROPERTIES  
& REAL ESTATE<sup>SM</sup>

**JUSTIN HASTY**

*LAND SPECIALIST*

**C: 706-671-4554**

**O: 769-888-2522**

**[justin@smalltownproperties.com](mailto:justin@smalltownproperties.com)**

**P.O. Box 340 - Rocky Face, GA 30740**

**[smalltownproperties.com](http://smalltownproperties.com)**

Information is believed to be accurate but not guaranteed.



60 ± ACRES

WHITFIELD COUNTY, GEORGIA



**SMALLTOWN**  
HUNTING PROPERTIES  
& REAL ESTATE<sup>SM</sup>

**JUSTIN HASTY**

LAND SPECIALIST

C: 706-671-4554

O: 769-888-2522

[justin@smalltownproperties.com](mailto:justin@smalltownproperties.com)

P.O. Box 340 - Rocky Face, GA 30740

[smalltownproperties.com](http://smalltownproperties.com)

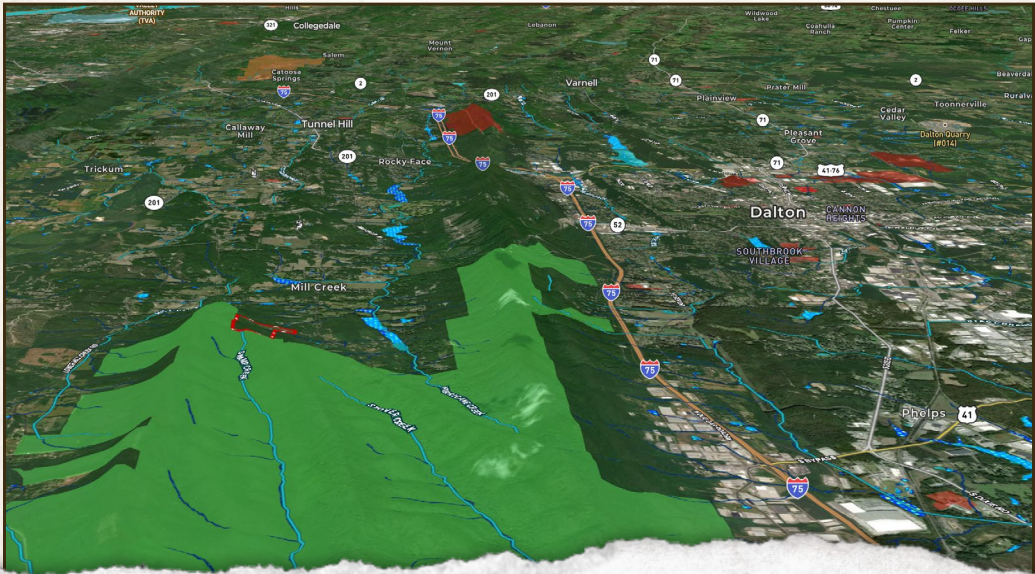
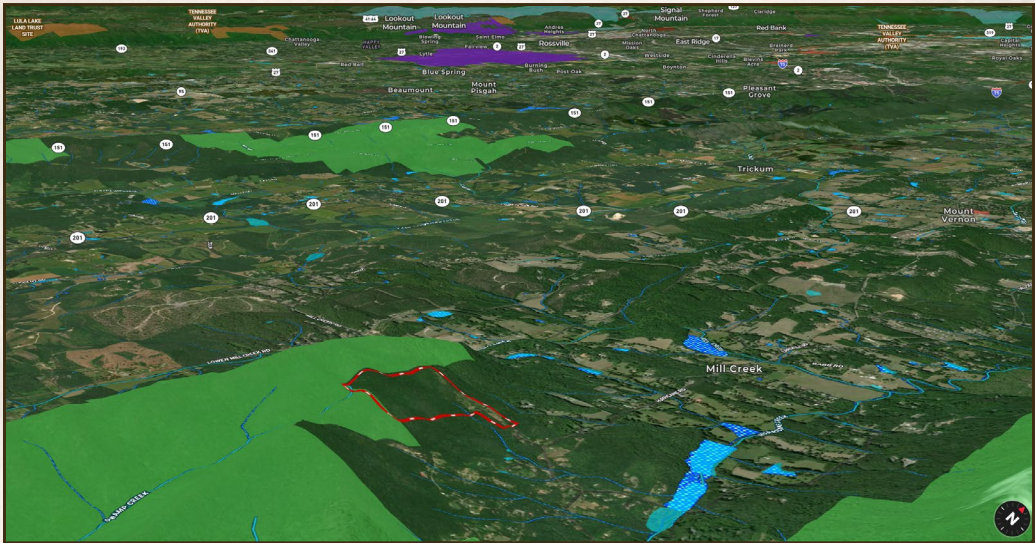
Information is believed to be accurate but not guaranteed.





60 ± ACRES

WHITFIELD COUNTY, GEORGIA



**SMALLTOWN**  
HUNTING PROPERTIES  
& REAL ESTATE<sup>SM</sup>

**JUSTIN HASTY**

LAND SPECIALIST

C: 706-671-4554

O: 769-888-2522

[justin@smalltownproperties.com](mailto:justin@smalltownproperties.com)

P.O. Box 340 - Rocky Face, GA 30740

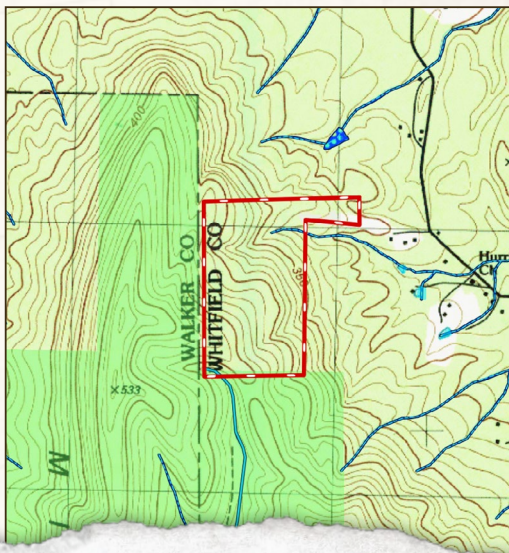
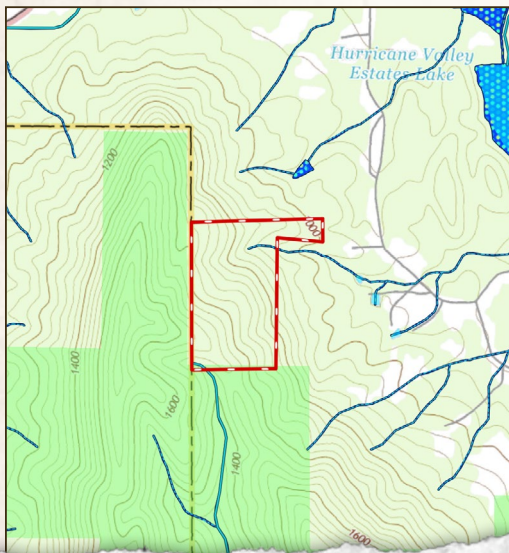
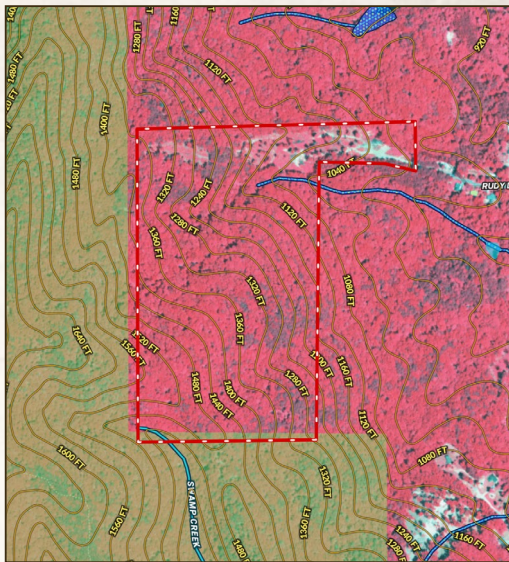
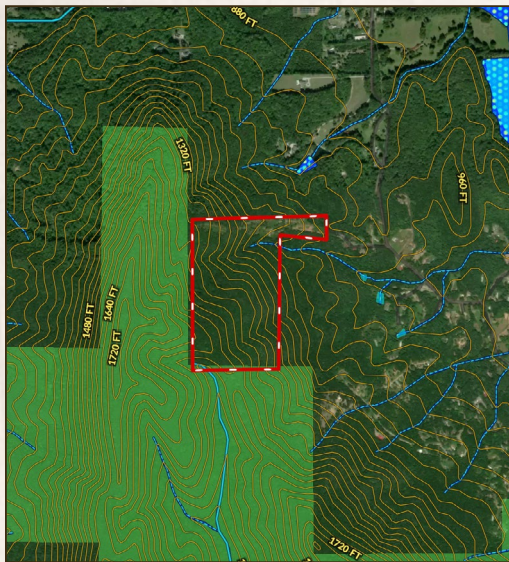
[smalltownproperties.com](http://smalltownproperties.com)

Information is believed to be accurate but not guaranteed.



60 ± ACRES

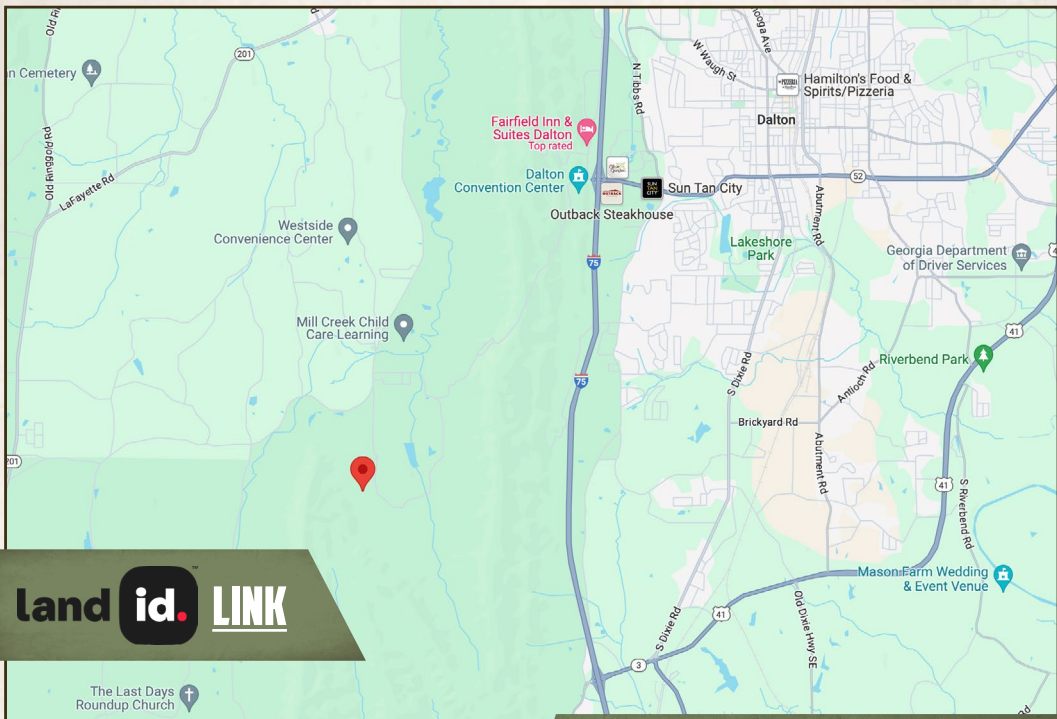
WHITFIELD COUNTY, GEORGIA





60 ± ACRES

WHITFIELD COUNTY, GEORGIA



land id. LINK



Directions From Dalton: Travel West Dug Gap Mountain Road over the mountain until you hit Mill Creek Road. Turn left on Mill Creek Road and then another left on Hurricane Road. Turn right on Rudy Drive and continue to the dead end where you will see a sign.

[LINK TO GOOGLE MAP DIRECTIONS](#)



**SMALLTOWN**  
HUNTING PROPERTIES  
& REAL ESTATE<sup>SM</sup>

**JUSTIN HASTY**

LAND SPECIALIST

C: 706-671-4554

O: 769-888-2522

[justin@smalltownproperties.com](mailto:justin@smalltownproperties.com)

P.O. Box 340 - Rocky Face, GA 30740

[smalltownproperties.com](http://smalltownproperties.com)

Information is believed to be accurate but not guaranteed.

