



Prime Recreational Wapello Co. Land For Sale

215th Avenue, Blakesburg, IA 52536

**Hawkeye Farm
Mgmt & Real Estate**

Price: \$226,000

Acres: 40 +/-

Price/Acre: \$5,650







PROPERTY DETAILS

- Top End Hunting Opportunities
- Proven Trophy Whitetail Producer
- Secluded Location
- Small Pond and Seasonal Creek
- Potential Building Site
- Diverse Layout
- Beautiful Landscape
- Estimated Annual Taxes \$410

CONTACT US



**Hawkeye
Farm Mgmt &
Real Estate**

 (641) 932-7796
 Hawkeye@UCIowa.com
 www.UCIowa.com
 1010 S Clinton
Albia, IA 52531



RYAN AMMONS
(641) 777- 2955

Ryan@UCIowa.com



NATE AMMONS
(641) 777-2861

Nate@UCIowa.com



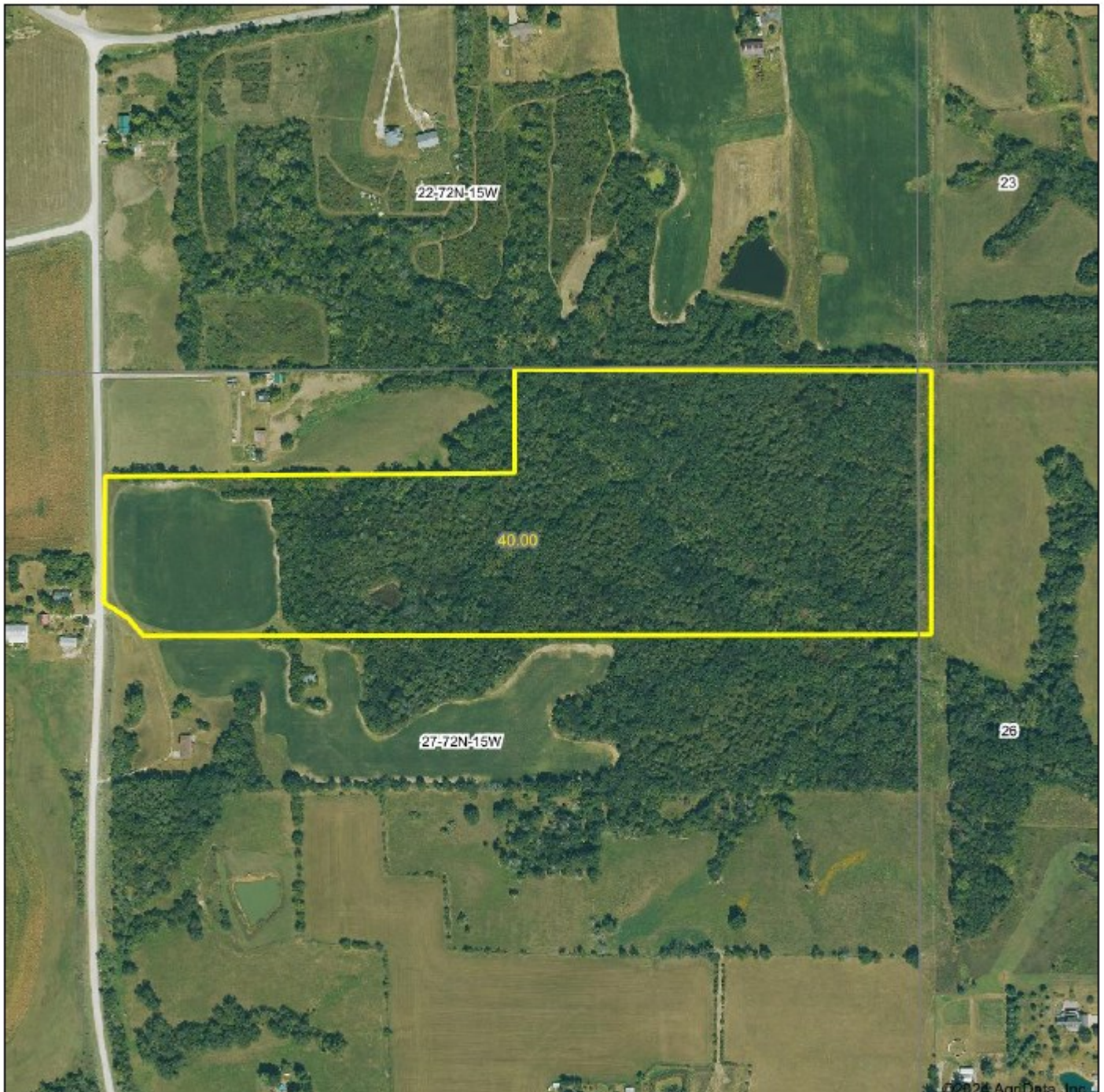
Alan Ammons, Broker, Licensed in Iowa & Missouri. All Agents Licensed in Iowa. The above information, although believed to be accurate, is not warranted or guaranteed by the owner, listing firm, or listing agent.

PROPERTY MAP



**Hawkeye
Farm Mgmt &
Real Estate**

Aerial Map



Hawkeye Farm Mgmt & Real Estate



22 N Main, Albia IA Phone: 661-932-1796
Email: hawkeye@hwrma.com
On the web: www.hawkeyefarm.com

Boundary Center: 41° 0' 53.93, -92° 34' 3

0ft 491ft 982ft

**27-72N-15W
Wapello County
Iowa**



Maps Provided By:
surety
CUSTOMER ONLINE MAPPING
© AgriData, Inc. 2023 www.AgridataInc.com

7/16/2024