



SMALLTOWN
HUNTING PROPERTIES
& REAL ESTATESM

**0.6± ACRE LOT ON LAKE EDDINS
JASPER COUNTY, MS**

\$12,000



OFFICE (769) 888-2522 | WWW.SMALLTOWNPROPERTIES.COM

THE LAKE EDDINS LOT

PROPERTY PROFILE

LOCATION:

- Pachuta, MS
- Jasper County
- Lake Eddins Community
- 33± Miles to Meridian
- 31± Miles to Laurel
- 22± Miles to Bay Springs
- 15± Miles to Quitman

COORDINATES:

- 32.05115, -88.9738

PROPERTY USE:

- Recreational
- Weekend Getaway
- Potential House Site

PROPERTY INFORMATION:

- 0.6± Acres
- Wooded Lot
- Managed Fishing Lake
- Gated Community

TAX INFORMATION:

- Parcel # 062Y-33-25-060.00
- Taxes \$252.41 in 2023
- HOA fees \$665.50 in 2023



SMALLTOWN
HUNTING PROPERTIES
& REAL ESTATESM

DEWAYNE ATKINSON

LAND SPECIALIST

C: 601-832-3075

O: 769-888-2522

dewayne@smalltownproperties.com

4848 Main St. - Flora, MS 39071

smalltownproperties.com

Information is believed to be accurate but not guaranteed.

WELCOME TO THE LAKE EDDINS LOT

DISCOVER THE CHARM OF LAKE EDDINS IN JASPER COUNTY, MISSISSIPPI. This beautiful lake community in Pachuta is renowned as a fisherman's paradise. Nestled within a gated community, Lake Eddins offers a small-town feel, making you feel as though you've truly escaped the hustle and bustle of everyday life. This 0.6± acre lot is perfectly tucked away from the lake, surrounded by towering pines, providing privacy at this time. The buildable lot is your canvas to create the lake house getaway or forever home of your dreams.

If you have been searching for that special lake property/community to invest in, call Dewayne Atkinson today!



SMALLTOWN
HUNTING PROPERTIES
& REAL ESTATESM

DEWAYNE ATKINSON

LAND SPECIALIST

C: 601-832-3075

O: 769-888-2522

dewayne@smalltownproperties.com

4848 Main St. - Flora, MS 39071

smalltownproperties.com

Information is believed to be accurate but not guaranteed.

0.6 ± ACRE LOT ON LAKE EDDINS

JASPER COUNTY, MISSISSIPPI



SMALLTOWN
HUNTING PROPERTIES
& REAL ESTATESM

DEWAYNE ATKINSON

LAND SPECIALIST

C: 601-832-3075

O: 769-888-2522

dewayne@smalltownproperties.com

4848 Main St. - Flora, MS 39071

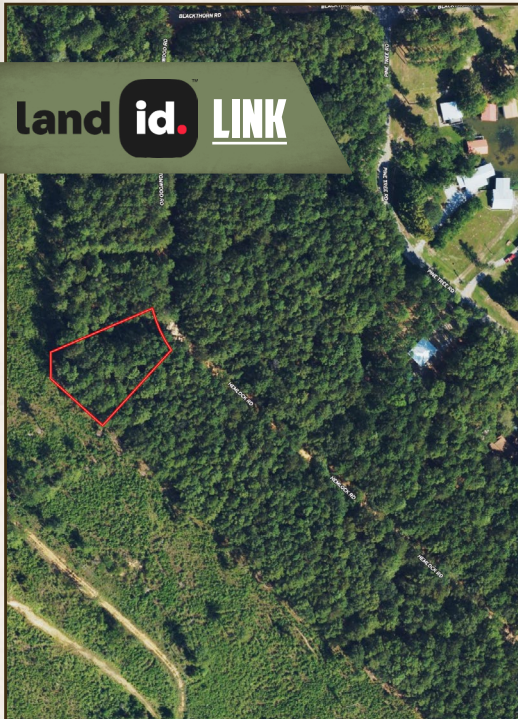
smalltownproperties.com

Information is believed to be accurate but not guaranteed.

0.6 ± ACRE LOT ON LAKE EDDINS

JASPER COUNTY, MISSISSIPPI

land id. LINK



Directions from the intersection of Hwy 11 and Hwy 18 in Pachuta, MS: Travel west towards Hwy 512. Turn on 512 and go approximately 1.5 miles and continue onto Co. Rd 16. Go approximately 3.0 miles and turn right into Lake Eddins 1638.

[LINK TO GOOGLE MAP DIRECTIONS](#)



SMALLTOWN
HUNTING PROPERTIES
& REAL ESTATESM

DEWAYNE ATKINSON
LAND SPECIALIST
C: 601-832-3075
O: 769-888-2522
dewayne@smalltownproperties.com
4848 Main St. - Flora, MS 39071
smalltownproperties.com

Information is believed to be accurate but not guaranteed.