



# 3503 SW TRAILSIDE PATH, STUART FL

3503 SW TRAILSIDE PATH  
STUART, FL 34997

---

Bo Jahna  
863.557.0320  
bojahna@svn.com

# Property Overview



Sale Price	\$750,000
OFFERING SUMMARY	
Acreage:	20± Acres
Price / Acre:	\$37,500
City:	Stuart
County:	Martin
Property Type:	Land

## PROPERTY OVERVIEW

Discover your dream property in the exclusive Trailside Ranchette Community, nestled just west of Hobe Sound, Florida. This sprawling 20-acre estate offers a serene escape surrounded by nature, while still providing easy access to the vibrant amenities and attractions of the area. This property is perfect for building a custom home, creating an equestrian retreat, or establishing a private sanctuary. Trailside is a close-knit community renowned for its spacious properties and country living ambiance, ensuring a peaceful lifestyle. Golf aficionados will find plenty of opportunities to play on world-class greens, with several new golf courses nearby. The area's exciting developments make it ideal for investors, while its proximity to the pristine beaches of Hobe Sound and the nearby Jonathan Dickinson State Park offers endless recreational opportunities. This unique property offers the perfect blend of rural charm at home and proximity to modern conveniences, presenting the opportunity to create your own piece of paradise in this rapidly growing and desirable area. Contact us today for more information or to schedule a private tour.

# Specifications & Features



## SPECIFICATIONS & FEATURES

Taxes & Tax Year: 2023 - \$76.75

Zoning / FLU: Ag 20

Nearest Point of Interest:

Within 5 miles of Michael Jordan's The Grove and Discovery's Atlantic Fields! Within 2 miles of Steve Ross's new golf club Apogee. Next door to the future Buzz Divosta development Storie. 15 minutes to downtown Hobe sound and downtown Jupiter. 20 minutes to downtown Stuart.

Fencing: fully fenced and crossfenced

Current Use: Future homesite and cattle

# Location



## LOCATION & DRIVING DIRECTIONS

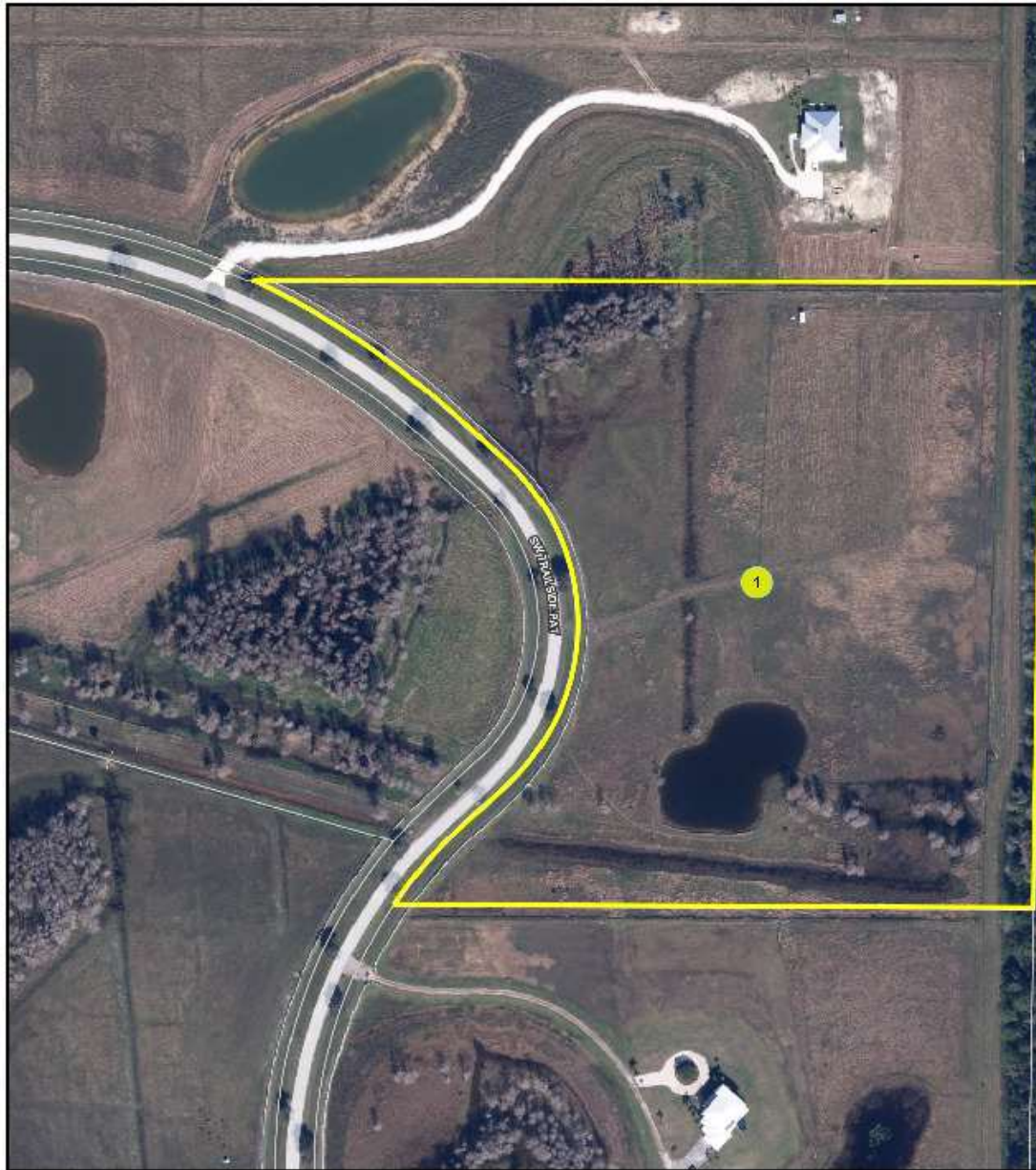
Parcel: 01-40-40-001-000-00250-0

GPS: 27.023506, -80.280255

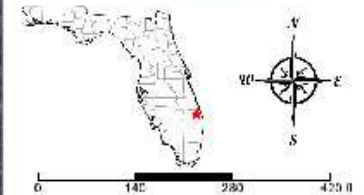
Driving Directions:

Showing Instructions: Call Bo Jahna



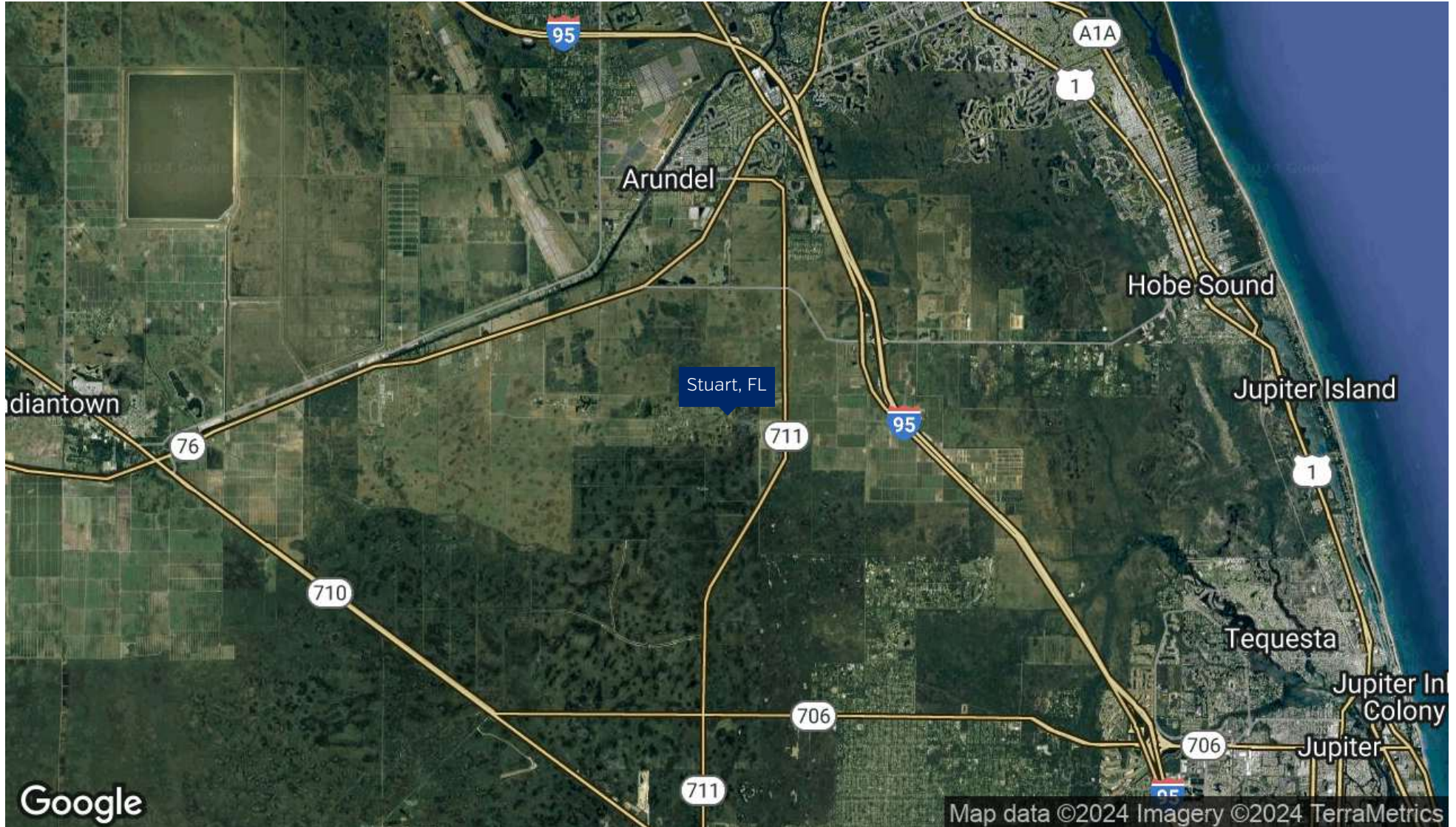


County Boundaries  
Streets MapWise  
Parcel Outlines



©2023 SVN. SVN | Saunders Ralston Dentler Real Estate is a registered trademark. Licensed to SVN Shared ValueNetworks. Any information displayed should be verified and is not guaranteed to be accurate by SVN Saunders Ralston Dentler. You may not copy or use this material without written consent from SVN Saunders Ralston Dentler.

# Regional Map





# ONE OF AMERICA'S BEST BROKERAGES



One of America's  
Best Brokerages



APEX 2022 Top  
National Producer



Most Influential  
Business Leaders



Largest Commercial  
Real Estate Brokers  
in Tampa Bay



Ranked 210 on Inc.  
5000 Regional List



For more information visit [www.SVNsaunders.com](http://www.SVNsaunders.com)

#### HEADQUARTERS

1723 Bartow Rd  
Lakeland, FL 33801  
863.648.1528

#### ORLANDO

605 E Robinson Street, Suite 410  
Orlando, Florida 32801  
386.438.5896

#### NORTH FLORIDA

356 NW Lake City Avenue  
Lake City, Florida 32055  
352.364.0070

#### GEORGIA

203 E Monroe Street  
Thomasville, Georgia 31792  
229.299.8600

#### ARKANSAS

112 W Center St, Suite 501  
Fayetteville, Arkansas 72701  
479.582.4113

©2024 Saunders Ralston Dantzler Real Estate. All SVN® Offices Independently Owned and Operated SVN | Saunders Ralston Dantzler Real Estate is a full-service land and commercial real estate brokerage representing buyers, sellers, investors, institutions, and landowners since 1996. We are recognized nationally as an authority on all types of land, including agriculture, ranch, recreation, and residential development. Our commercial real estate services include property management, leasing and tenant representation, valuation, business brokerage, and advisory and counseling services for office, retail, industrial, and multifamily properties. Our firm also features an auction company, a forestry division, international partnerships, and extensive expertise in conservation easements. Located in Florida, Georgia, and Alabama, we provide proven leadership and collaborative expertise backed by the strength of the SVN® global platform.



CERTIFIED  
PROPERTY  
MANAGER®

