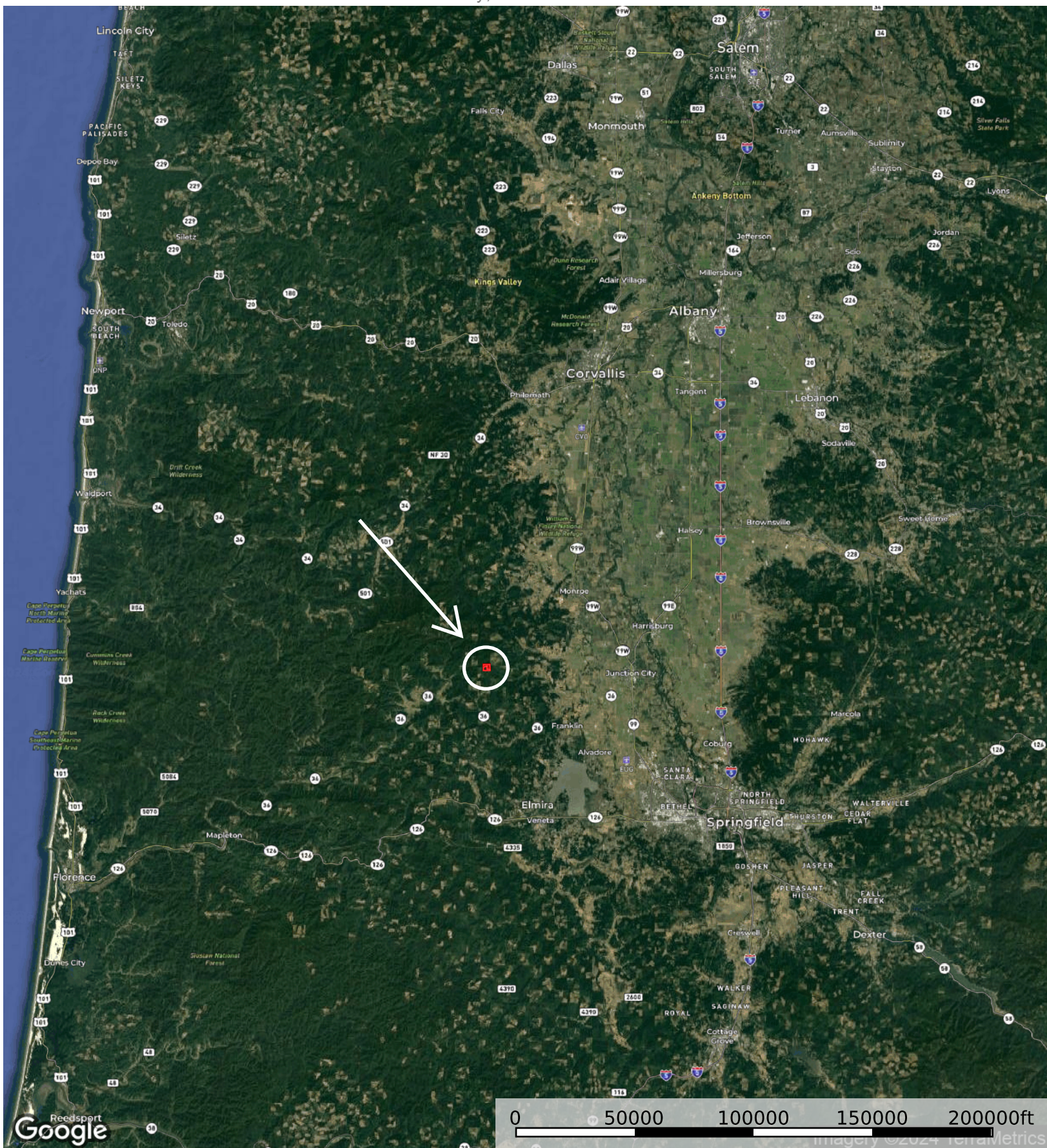


High Pass Tree Farm

Lane County, OR - 150.41 AC +/-



Boundary

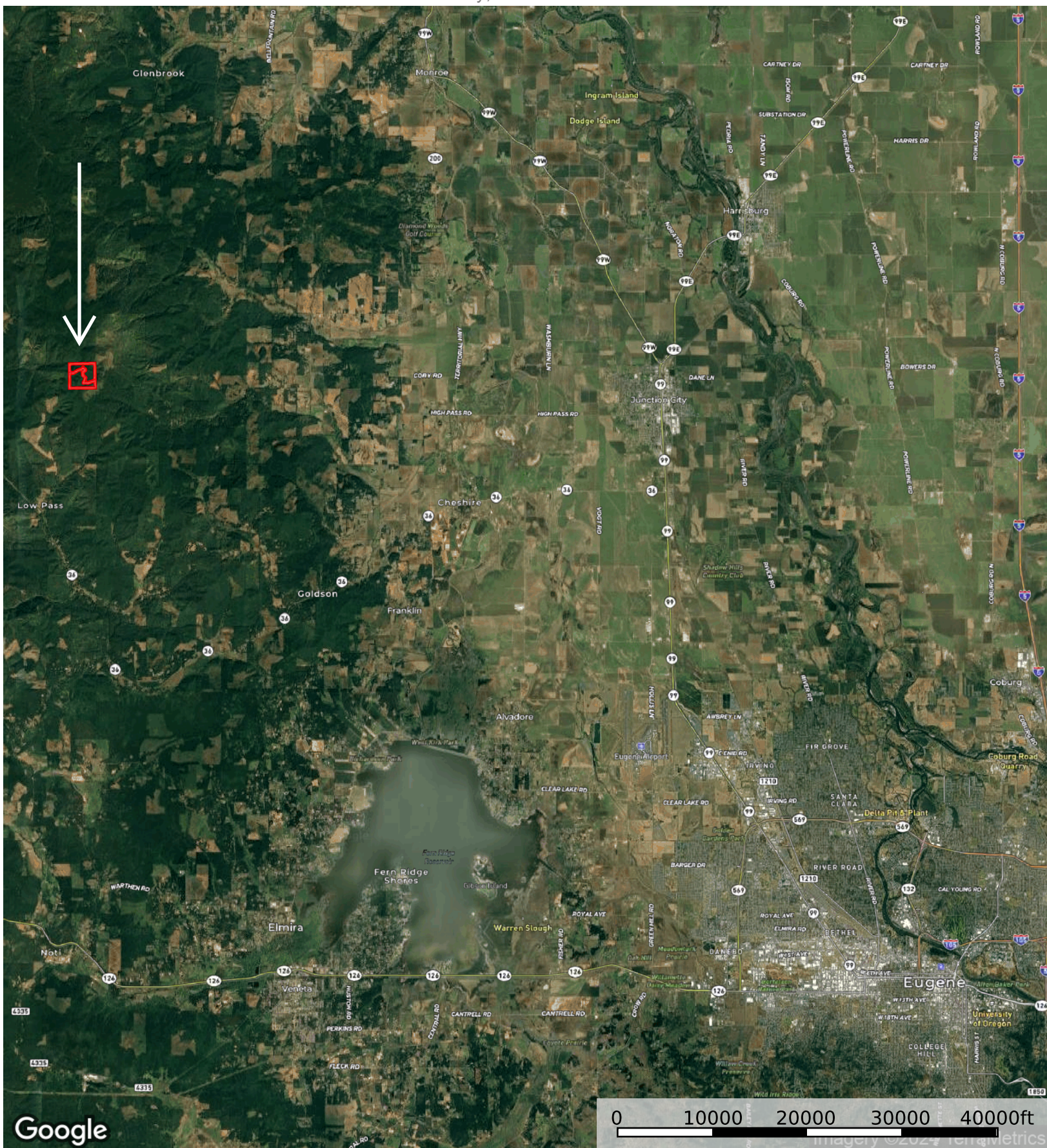
Triangle Lake: 11 miles - 25 minutes
Junction City: 13 miles - 24 minutes
EUG Airport: 21 miles - 30 minutes
Eugene: 22 miles - 35 minutes
Florence: 52 miles - 1 hour 15 minutes



The information contained herein was obtained from sources deemed to be reliable. Land id™ Services makes no warranties or guarantees as to the completeness or accuracy thereof.

High Pass Tree Farm

Lane County, OR - 150.41 AC +/-



Boundary

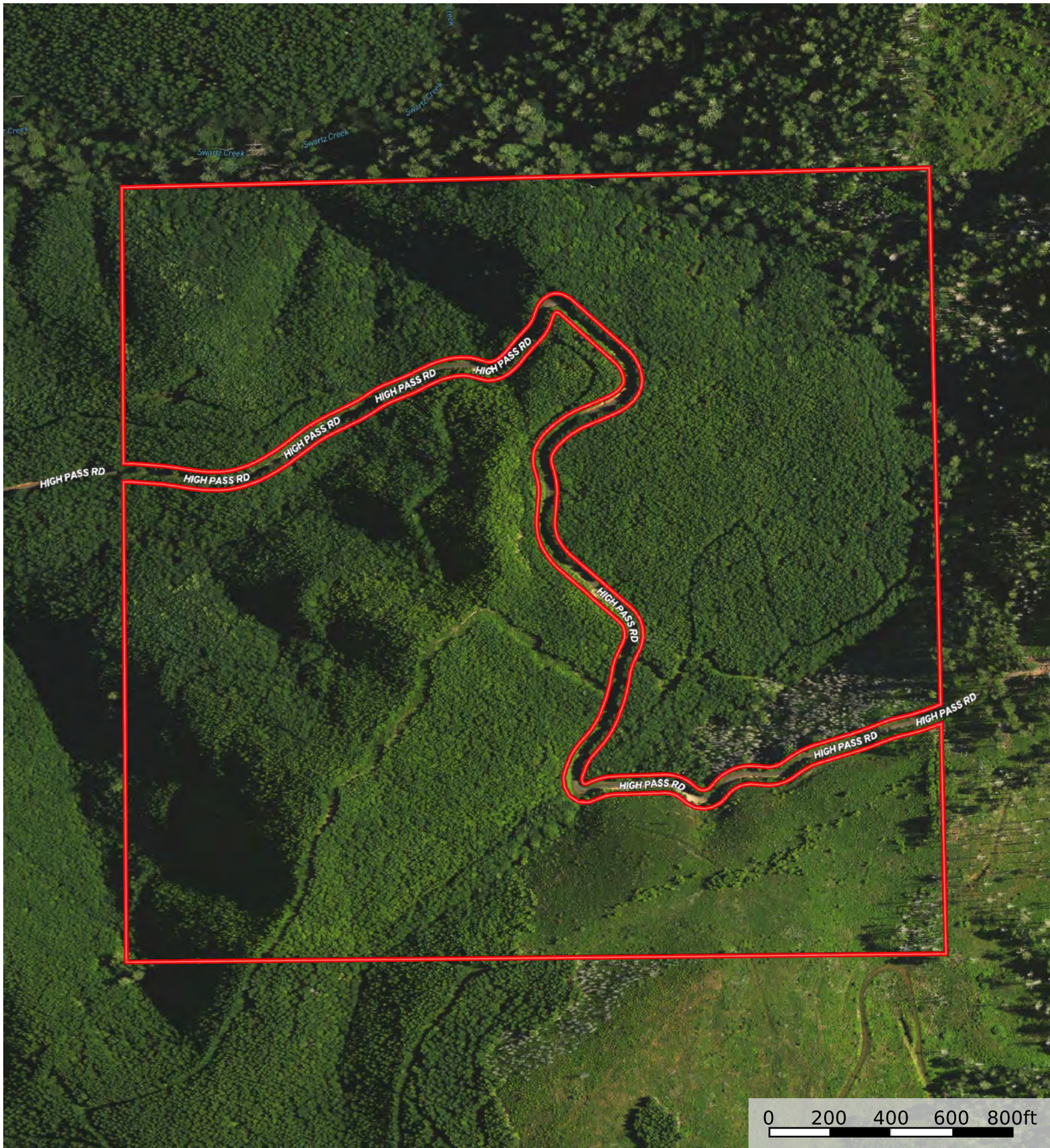
T15S R06W Sec. 32 TL3400



The information contained herein was obtained from sources deemed to be reliable. Land id™ Services makes no warranties or guarantees as to the completeness or accuracy thereof.

High Pass Tree Farm

Lane County, OR - 150.41 AC +/-



0 200 400 600 800ft



Boundary

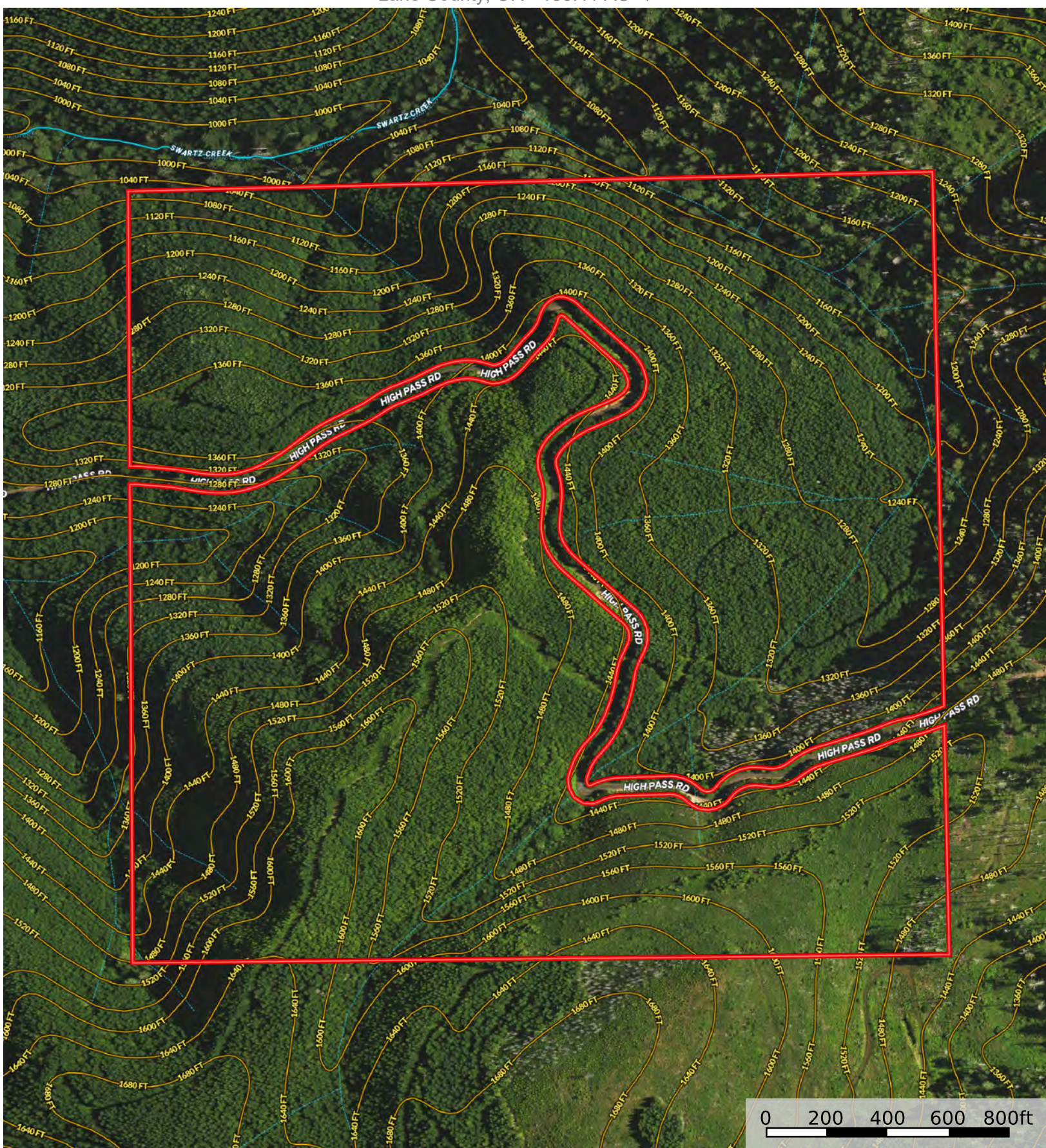
T15S R06W Sec. 32 TL3400



The information contained herein was obtained from sources deemed to be reliable. Land id™ Services makes no warranties or guarantees as to the completeness or accuracy thereof.

High Pass Tree Farm

Lane County, OR - 150.41 AC +/-



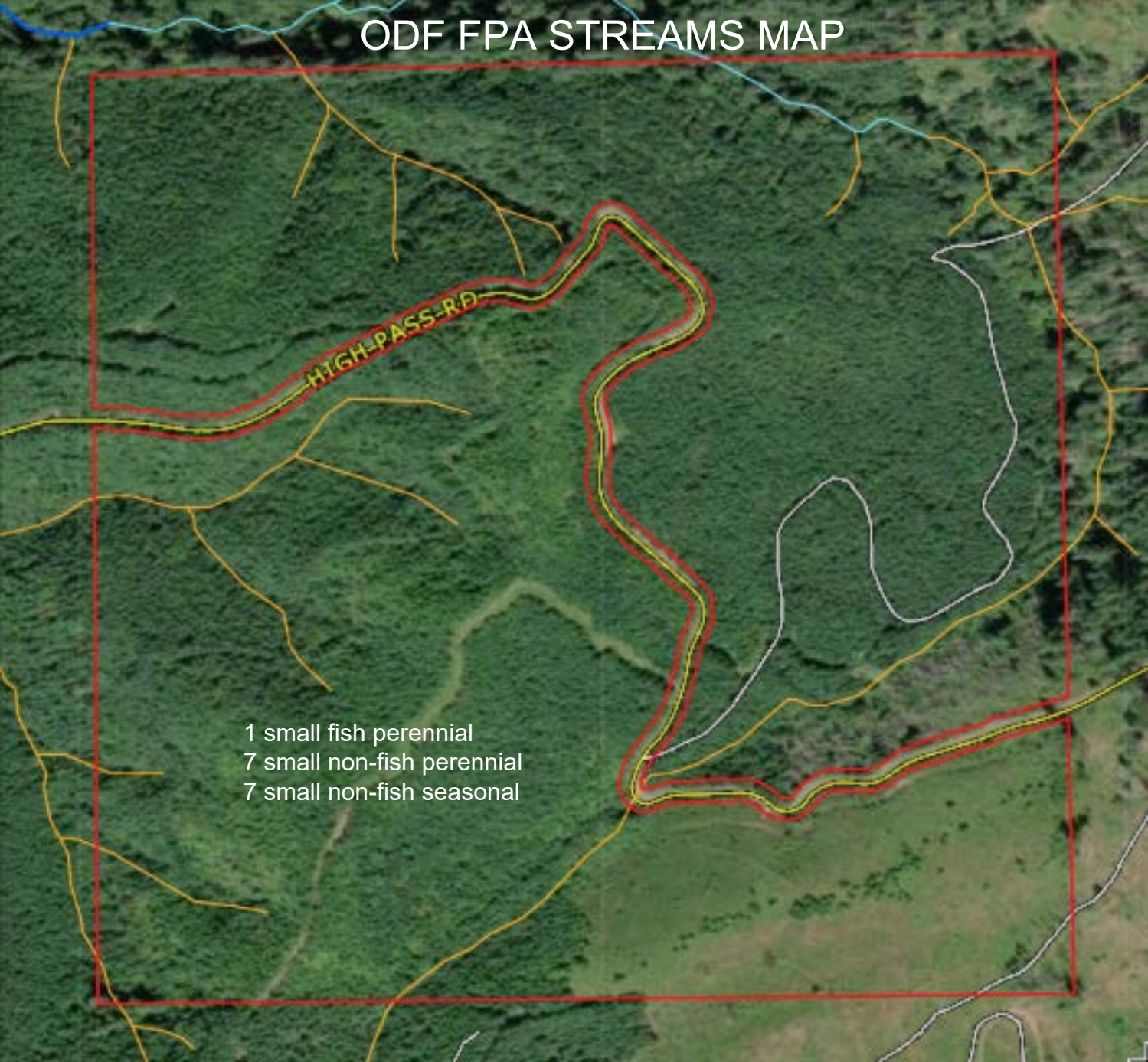
Boundary Stream, Intermittent River/Creek

Highest Elevation: 1,650'
Lowest Elevation: 1,000'

ODF FPA STREAMS MAP

HIGH-PASS-RD

1 small fish perennial
7 small non-fish perennial
7 small non-fish seasonal



FOR ASSESSMENT AND
TAXATION ONLY

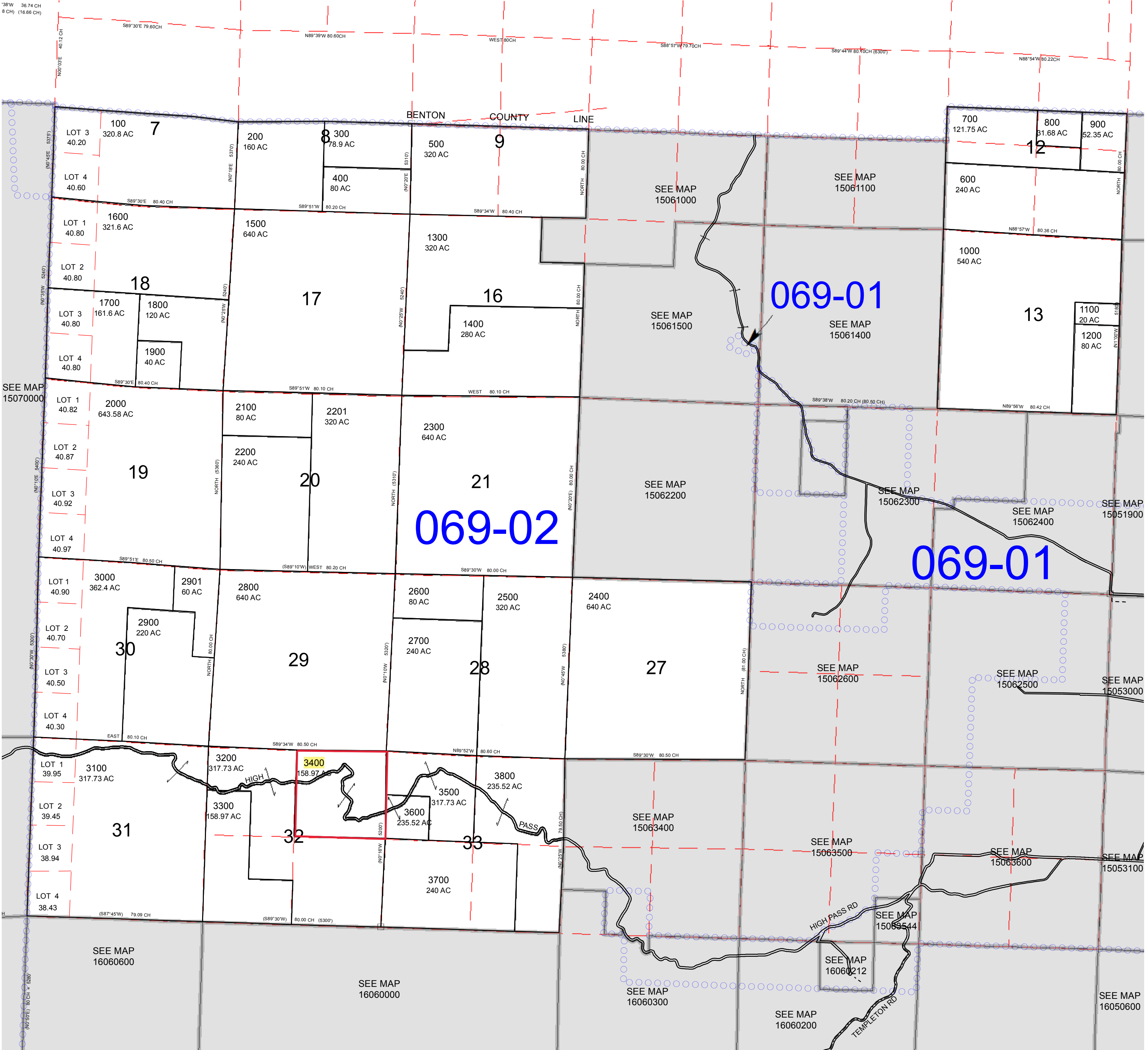
T.15S. R.6W. W.M.
Lane County
1" = 2000'

REVISIONS
06/06/2007 - LCAT142 - CONVERT MAP TO GIS
11/10/2014 - LCAT155 - ACRE CORRECTION Tls 700, 800, & 900

15060000

LCATJXG - 2014-11-10 15:56

CANCELLED



15060000