

N.W. CORNER SECTION 32

FD. 1963 B.L.M. IRON PIPE AND BRASS CAP
48" HEMLOCK, N24°E, 48.0' (SCAR VIS.), 1883 B.T.
24" CEDAR, N25°W, 42.6' (NO MARKS), 1963 B.T.
42" FIR, S56°W, 50.0' (SCAR VIS.), 1963 B.T.
60" DOWNED FIR, S80°E, 5.0' (NO MARKS), 1963 B.T.
18" CEDAR, S87°E, 67.3' (SCRIBE VIS.), 1987 B.T.

NORTH 1/4 CORNER SECTION 32

FD. 16" FIR STUB, S70°W, 20.5' (SCRIBE VIS.), 1883 B.T.
SET 5/8" x 30" IRON PIN WITH YELLOW PLASTIC CAP
12" HEMLOCK, S29°E, 22.1' (SCRIBED/METAL WASHER/PAINTED RED)
14" MAPLE, N65°W, 11.7' (SCRIBED/METAL WASHER/PAINTED RED)

"B" WEST 1/16 CORNER SECTIONS 29 AND 32

SET 5/8" x 30" IRON PIN WITH YELLOW PLASTIC CAP.
5" FIR, S40°E, 8.7' (SCRIBED/METAL WASHER/PAINTED RED)
30" FIR, N44°E, 12.5' (SCRIBED/METAL WASHER/PAINTED RED)

"C" NORTH 1/16 CORNER SECTIONS 31 AND 32

SET 5/8" x 30" IRON PIN WITH YELLOW PLASTIC CAP
6" FIR, S48°W, 6.0' (SCRIBED/METAL WASHER/PAINTED RED)
8" HEMLOCK, N24°E, 17.0' (SCRIBED/METAL WASHER/PAINTED RED)

"D" N.W. 1/16 CORNER SECTION 32

SET 5/8" x 30" IRON PIN WITH YELLOW PLASTIC CAP.
12" FIR, S04°E, 13.5' (SCRIBED/METAL WASHER/PAINTED RED)
16" FIR, S88°W, 20.1' (SCRIBED/METAL WASHER/PAINTED RED)

"E" C.W. 1/16 CORNER SECTION 32

SET 5/8" x 30" IRON PIN WITH YELLOW PLASTIC CAP
8" FIR, S84°W, 10.9' (SCRIBED/METAL WASHER/PAINTED RED)
16" FIR, N35°E, 9.8' (SCRIBED/METAL WASHER/PAINTED RED)

"F" S.W. 1/16 CORNER SECTION 32

SET 5/8" x 30" IRON PIN WITH YELLOW PLASTIC CAP
12" FIR, S56°W, 15.6' (SCRIBED/METAL WASHER/PAINTED RED)
14" FIR, S17°E, 16.0' (SCRIBED/METAL WASHER/PAINTED RED)

"G" C.S. 1/16 CORNER SECTION 32

SET 5/8" x 30" IRON PIN WITH YELLOW PLASTIC CAP.
14" MAPLE, S56°W, 31.9' (SCRIBED/METAL WASHER/PAINTED RED)
18" ALDER, S50°E, 11.0' (SCRIBED/METAL WASHER/PAINTED RED)

"H" WEST 1/4 CORNER SECTION 32

SET 5/8" x 30" IRON PIN WITH YELLOW PLASTIC CAP
(IRON PIN SET BY SINGLE PROPORTIONATE MEASURE)
12" FIR, N17°W, 7.2' (SCRIBED/METAL WASHER/PAINTED RED)
14" FIR, S88°E, 20.8' (SCRIBED/METAL WASHER/PAINTED RED)

"A" CENTER 1/4 CORNER SECTION 32

SET 5/8" x 30" IRON PIN WITH YELLOW PLASTIC CAP.
10" ALDER, N43°E, 7.4' (SCRIBED/METAL WASHER/PAINTED RED)
12" ALDER, S28°W, 20.0' (SCRIBED/METAL WASHER/PAINTED RED)
12" FIR, N38°W, 28.5' (SCRIBED/METAL WASHER/PAINTED RED)
14" ALDER, S86°E, 20.1' (SCRIBED/METAL WASHER/PAINTED RED)

EAST 1/4 CORNER SECTION 32

FD. 1987 B.L.M. IRON PIPE AND BRASS CAP.
26" FIR SNAG, N59°E, 8.2' (SCRIBE VIS.), 1883 B.T.
12" FIR, S76°W, 27.4' (SCAR VIS.), 1987 B.T.
16" FIR, N34°E, 34.3' (SCAR VIS.), 1987 B.T.

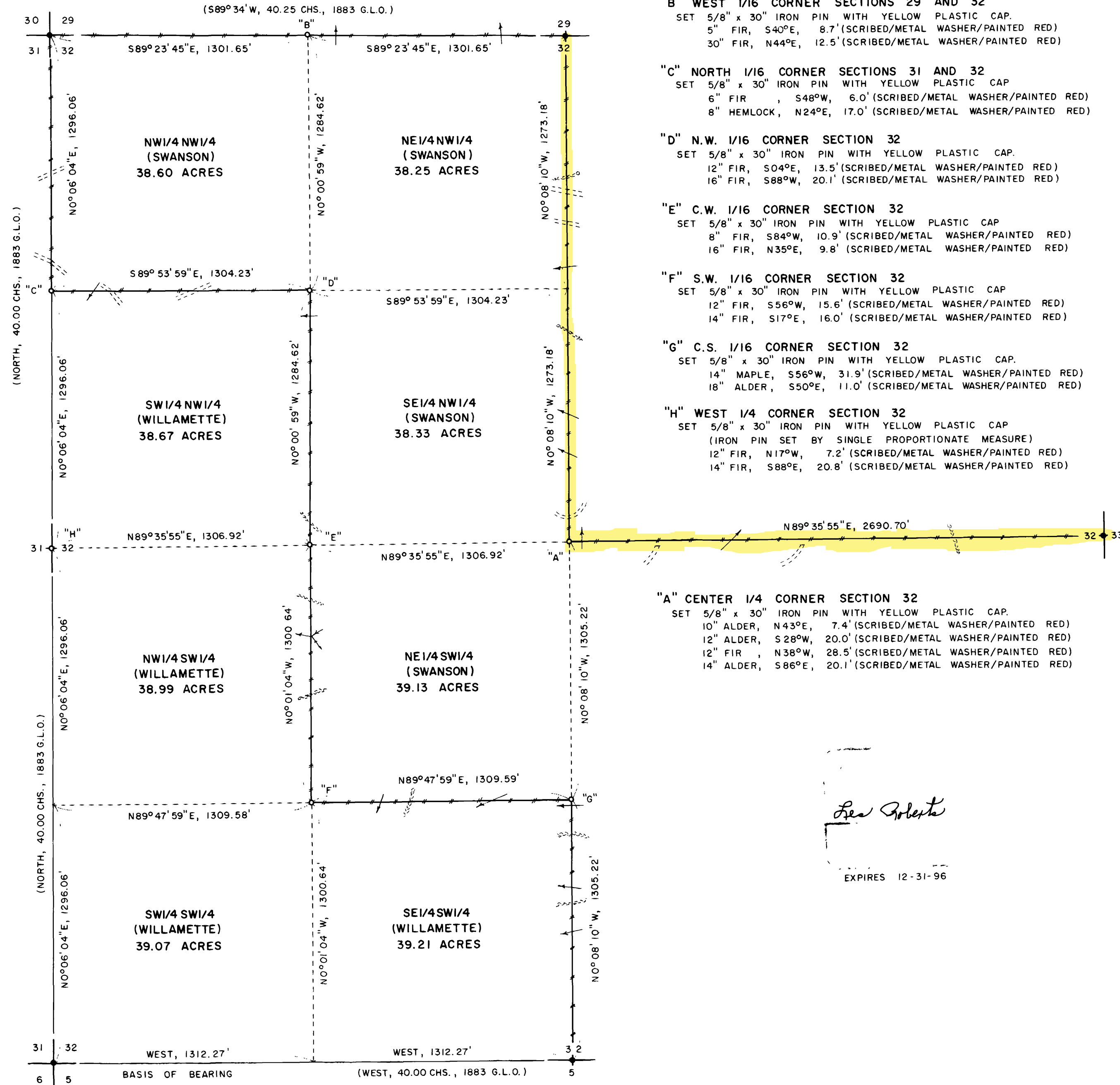
NARRATIVE, THE PURPOSE OF THIS SURVEY IS TO SET THE CENTER 1/4 CORNER OF SECTION 32 AND TO BLAZE AND POST THE EAST 1/2 OF THE EAST-WEST $\frac{1}{2}$ AS WELL AS BLAZING AND POSTING THE NORTH 1/2 OF THE NORTH-SOUTH $\frac{1}{2}$ OF SAID SECTION 32. ALSO THE PROPERTY LINES COMMON TO SWANSON-SUPERIOR FOREST PRUDUCTS AND WILLAMETTE INDUSTRIES INC., LYING IN THE WEST 1/2 OF SECTION 32, ARE TO BE BLAZED AND POSTED IN THIS SURVEY. THE EAST 1/4 CORNER, THE NORTH 1/4 CORNER, THE N.W. SECTION CORNER, THE S.W. SECTION CORNER AND THE SOUTH 1/4 CORNER WERE FOUND IN THE FIELD AND USED AS CONTROL FOR THIS SURVEY A SERIES OF CLOSED RANDOM E.D.M. CONTROL TRAVERSES, USING A WILD T-16 THEODOLITE AND A DI-4L E.D.M., WERE RUN BETWEEN THE CONTROLLING CORNERS FOUND IN THE FIELD. SECTION 32 WAS THEN SUBDIVIDED ACCORDING TO THE B.L.M. MANUAL OF INSTRUCTION FOR THE SURVEY OF THE PUBLIC LANDS OF THE UNITED STATES. A CLOSED RANDOM PROPERTY LINE TRAVERSE, USING A WILD T-16 THEODOLITE AND A DI-4L E.D.M., WAS RUN ALONG ALL BOUNDARY LINES TO BE BLAZED AND POSTED. OFFSETS WERE COMPUTED FROM THIS PROPERTY LINE TRAVERSE TO THE TRUE PROPERTY LINE. PROPERTY LINES WERE MARKED WITH RED RIBBON, RED PAINTED BLAZES, GREEN METAL FENCE POSTS AND RED METAL FENCE POSTS. THE WEST 1/4 CORNER, MONUMENT "H" WAS SET BY SINGLE PROPORTIONATE MEASURE BETWEEN THE FOUND S.W. SECTION CORNER AND THE FOUND N.W. SECTION CORNER. THE CENTER 1/4 CORNER, MONUMENT "A", WAS SET AT THE POINT OF INTERSECTION OF THE NORTH-SOUTH AND EAST-WEST CENTERLINES OF SAID SECTION 32. THE WEST 1/16 CORNER, MONUMENT "B", WAS SET HALFWAY BETWEEN THE FOUND N.W. SECTION CORNER AND THE FOUND NORTH 1/4 CORNER. THE NORTH 1/16 CORNER, MONUMENT "C", WAS SET HALFWAY BETWEEN THE FOUND N.W. SECTION CORNER AND THE SET WEST 1/4 CORNER. THE N.W. 1/16 CORNER, MONUMENT "D", WAS SET AT THE POINT OF INTERSECTION OF THE NORTH-SOUTH AND EAST-WEST CENTERLINES OF SAID NW1/4. THE C.W. 1/16 CORNER, MONUMENT "E", WAS SET HALFWAY BETWEEN THE SET CENTER 1/4 CORNER AND THE SET WEST 1/4 CORNER AS SHOWN. THE S.W. 1/16 CORNER, MONUMENT "F", WAS SET AT THE POINT OF INTERSECTION OF THE NORTH-SOUTH AND EAST-WEST CENTERLINES OF SAID SW1/4. THE C.S. 1/16 CORNER, MONUMENT "G", WAS SET HALFWAY BETWEEN THE SET CENTER 1/4 CORNER AND THE FOUND SOUTH 1/4 CORNER.

BOUNDARY SURVEY
FOR
SWANSON-SUPERIOR FOREST PRODUCTS
AND
WILLAMETTE INDUSTRIES INC.
IN
SECTION 32, T15S, R6W, W.M.
LANE COUNTY, OREGON
BY
ROBERTS SURVEYING INC.
29 WEST 29TH STREET
EUGENE, OREGON 97405

JANUARY 20, 1995
SCALE 1" = 400'

LEGEND,

- MONUMENTS FOUND AND USED AS CONTROL
- MONUMENTS SET, 5/8" x 30" IRON PINS WITH YELLOW PLASTIC CAPS. CAPS STAMPED "ROBERTS P.L.S. 1039".
- LINES MARKED WITH RED RIBBON AND RED PAINTED BLAZES. ALSO POSTED WITH RED METAL FENCE POSTS AND GREEN METAL FENCE POSTS.
- () DATA OF RECORD, 1883 G.L.O. SURVEY BY GEORGE MERCER
- BASIS OF BEARING, WEST 1/2 OF SOUTH LINE SECTION 32 FROM 1883 G.L.O. SURVEY.
- DISTANCES TO BEARING TREES ARE CENTER MEASURE
- ALL NEW BEARING TREES ARE SCRIBED AND HAVE A METAL WASHER STAMPED "P.L.S. 1039" NAILED TO LOWER BLAZE. SCRIBED BLAZES ARE PAINTED RED.



Lee Roberts
EXPIRES 12-31-96

S.W. CORNER SECTION 32

FD. 1965 B.L.M. IRON PIPE AND BRASS CAP
20" FIR STUMP, S03°E, 30.3' (SCRIBE VIS.), 1965 B.T.
8" ALDER, N28°W, 12.6' (BARK SCRIBE), 1987 B.T.
8" FIR, S22°E, 23.6' (SCAR VIS.), 1987 B.T.
14" FIR, N25°E, 18.7' (SCAR VIS.), 1987 B.T.
18" FIR, S19°W, 5.1' (SCAR VIS.), 1987 B.T.

SOUTH 1/4 CORNER SECTION 32

FD. 1965 B.L.M. IRON PIPE AND BRASS CAP
30" FIR SNAG, N03°W, 73.5' (SCRIBE VIS.), 1853 B.T.
14" FIR, N23°W, 14.0' (SCAR VIS.), 1965 B.T.
14" FIR, S19°W, 16.8' (SCAR VIS.), 1965 B.T.