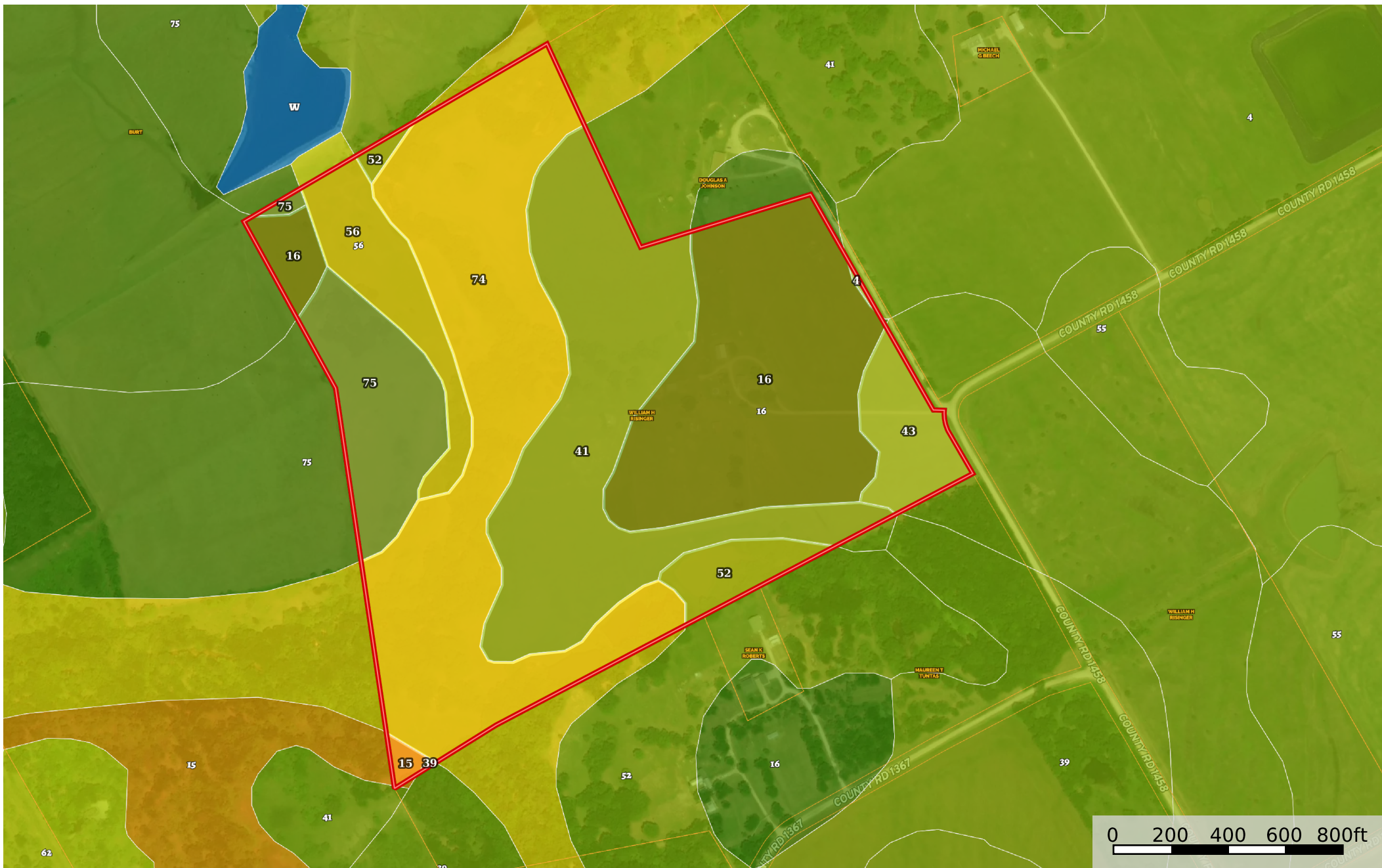



Texas, AC +/-



 Boundary

|  Boundary 77.59 ac

SOIL CODE	SOIL DESCRIPTION	ACRES	%	CPI	NCCPI	CAP
74	Tinn clay, 0 to 1 percent slopes, frequently flooded	23.95	30.86	0	46	5w
41	Gasil fine sandy loam, 1 to 5 percent slopes, eroded	18.48	23.81	0	41	3e
16	Blum loam, 0 to 2 percent slopes	18.25	23.52	0	48	2e
75	Travis fine sandy loam, 1 to 3 percent slopes	6.48	8.35	0	31	2e
56	Lamar clay loam, 3 to 5 percent slopes, eroded	4.55	5.86	0	42	4e
43	Heiden clay, 1 to 3 percent slopes	3.18	4.1	0	42	3e
52	Konsil fine sandy loam, 3 to 5 percent slopes	2.29	2.95	0	45	3e
15	Birome-Rayex complex, 5 to 20 percent slopes	0.33	0.43	0	33	6e
4	Altoga silty clay, 2 to 5 percent slopes, eroded	0.06	0.08	0	43	3e
39	Ferris-Heiden complex, 2 to 5 percent slopes	0.02	0.03	0	40	3e
TOTALS		77.59(*)	100%	-	43.53	3.37









(*) Total acres may differ in the second decimal compared to the sum of each acreage soil. This is due to a round error because we only show the acres of each soil with two decimal.

Capability Legend

Increased Limitations and Hazards

Decreased Adaptability and Freedom of Choice Users

Land, Capability

								
	1	2	3	4	5	6	7	8
'Wild Life'	•	•	•	•	•	•	•	•
Forestry	•	•	•	•	•	•	•	
Limited	•	•	•	•	•	•	•	
Moderate	•	•	•	•	•	•		
Intense	•	•	•	•	•			
Limited	•	•	•	•				
Moderate	•	•	•					
Intense	•	•						
Very Intense	•							

Grazing Cultivation

(c) climatic limitations (e) susceptibility to erosion

(s) soil limitations within the rooting zone (w) excess of water