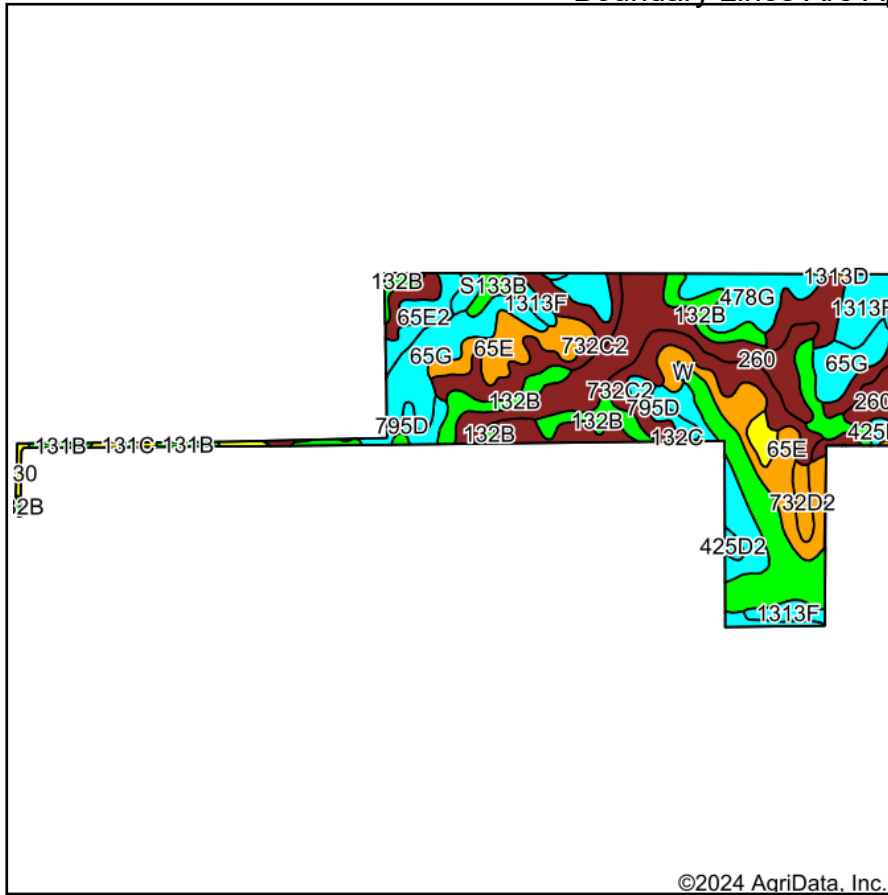
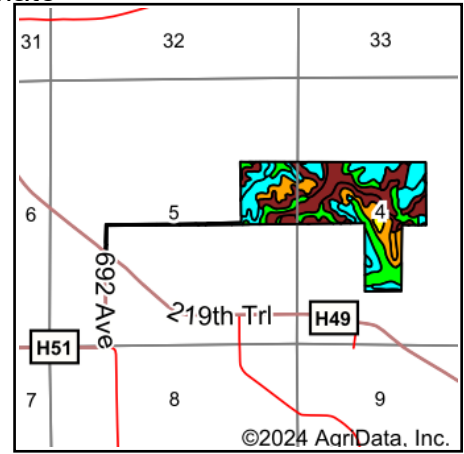


Soils Map

Boundary Lines Are Approximate



Soils data provided by USDA and NRCS.



State: **Iowa**
 County: **Monroe**
 Location: **5-71N-16W**
 Township: **Urbana**
 Acres: **150**
 Date: **9/30/2024**

Hawkeye Farm Mgmt & Real Estate



22 N Main, Albion IA Phone: 641-932-7796
 Email: hawkeye@uciowa.com
 On the web: www.uciowa.com
 www.iowawhiteoakfarms.com

Maps Provided By:



© AgriData, Inc. 2023

www.AgriDataInc.com



Area Symbol: IA135, Soil Area Version: 31

Code	Soil Description	Acres	Percent of field	CSR2 Legend	Non-Irr Class *c	CSR2**	CSR	*n NCCPI Corn	*n NCCPI Soybeans
732C2	Weller silty clay loam, 5 to 9 percent slopes, moderately eroded	26.10	17.3%		IIIe	59	40	81	67
260	Beckwith silt loam, 0 to 2 percent slopes	20.28	13.5%		IIIw	51	56	82	66
65G	Lindley loam, 18 to 40 percent slopes	20.19	13.5%		VIIe	6	5	21	11
65E	Lindley loam, 14 to 18 percent slopes	17.84	11.9%		VIe	33	30	71	60
132B	Weller silt loam, 2 to 5 percent slopes	14.65	9.8%		IIIe	67	60	89	80
13B	Olmitz-Colo-Vesser complex, 2 to 5 percent slopes	11.99	8.0%		IIw	82	60	70	71
1313F	Munterville silt loam, 18 to 25 percent slopes	8.34	5.6%		VIIe	11	5	49	33
478G	Munterville-Rock outcrop complex, 14 to 40 percent slopes	7.20	4.8%		VIIe	5	5	13	6
132C	Weller silt loam, 5 to 9 percent slopes	4.60	3.1%		IIIe	59	44	85	73
795D	Ashgrove silt loam, 9 to 14 percent slopes	4.36	2.9%		IVe	5	12	63	51
425D2	Keswick loam, 9 to 14 percent slopes, moderately eroded	3.82	2.5%		IVe	9	12	56	41
65E2	Lindley loam, 14 to 18 percent slopes, moderately eroded	3.45	2.3%		VIe	29	28	66	53
732D2	Weller silty clay loam, 9 to 14 percent slopes, moderately eroded	1.69	1.1%		IVe	34	28	78	63
S133B	Colo silty clay loam, heavy till, 2 to 5 percent slopes, rarely flooded	1.61	1.1%		IIw	80		95	83
65D	Lindley loam, 9 to 14 percent slopes	1.46	1.0%		IVe	43	40	74	63
130	Belinda silt loam, 0 to 2 percent slopes	0.88	0.6%		IIIw	47	63	75	63

Soils data provided by USDA and NRCS.



Code	Soil Description	Acres	Percent of field	CSR2 Legend	Non-Irr Class *c	CSR2**	CSR	*n NCCPI Corn	*n NCCPI Soybeans
131B	Pershing silt loam, 2 to 5 percent slopes	0.81	0.5%		IIIe	70	67	74	59
W	Water	0.25	0.2%			0	0		
223C2	Rinda silty clay loam, 5 to 9 percent slopes, moderately eroded	0.20	0.1%		IVw	45	22	60	46
1313D	Munterville silt loam, 9 to 14 percent slopes	0.20	0.1%		VIe	35	15	50	41
131C	Pershing silt loam, 5 to 9 percent slopes	0.08	0.1%		IIIe	65	49	72	58
Weighted Average					*-	41.1	*-	*n 65.1	*n 53.8

**IA has updated the CSR values for each county to CSR2.

*- CSR weighted average cannot be calculated on the current soils data, use prior data version for csr values.

*n: The aggregation method is "Weighted Average using all components"

*c: Using Capabilities Class Dominant Condition Aggregation Method

*- Non Irr Class weighted average cannot be calculated on the current soils data due to missing data.