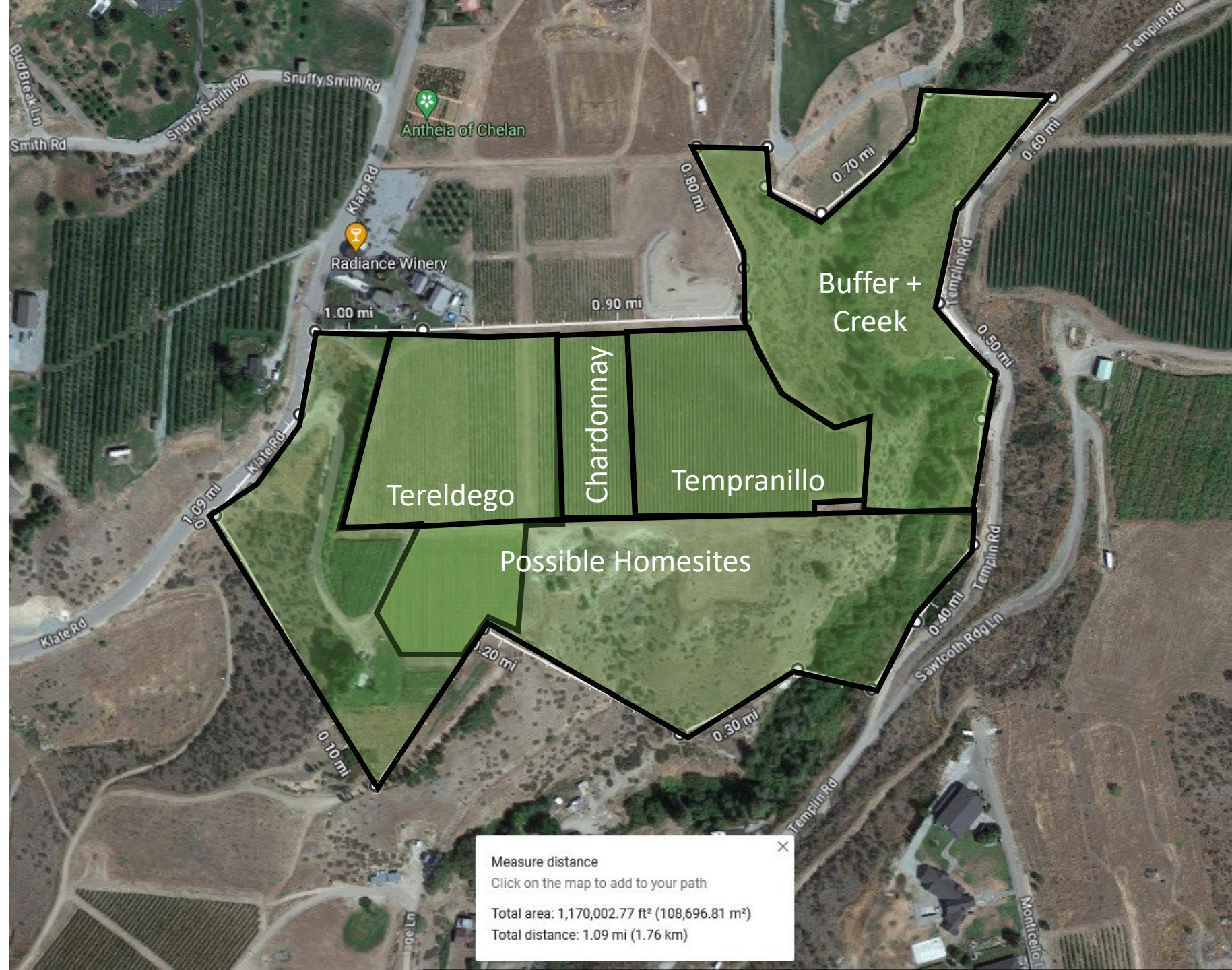


# Total – 25 Acres

## Key Features

- Chardonnay, Terpranillo, Tereldego
- Irrigation Water
- Domestic Water pending with Dept of Ecology
- Vineyard Used in Lake Chelan Winery's production
- 3 access points
- 4 legal lots of record
- Up to 7 homesites

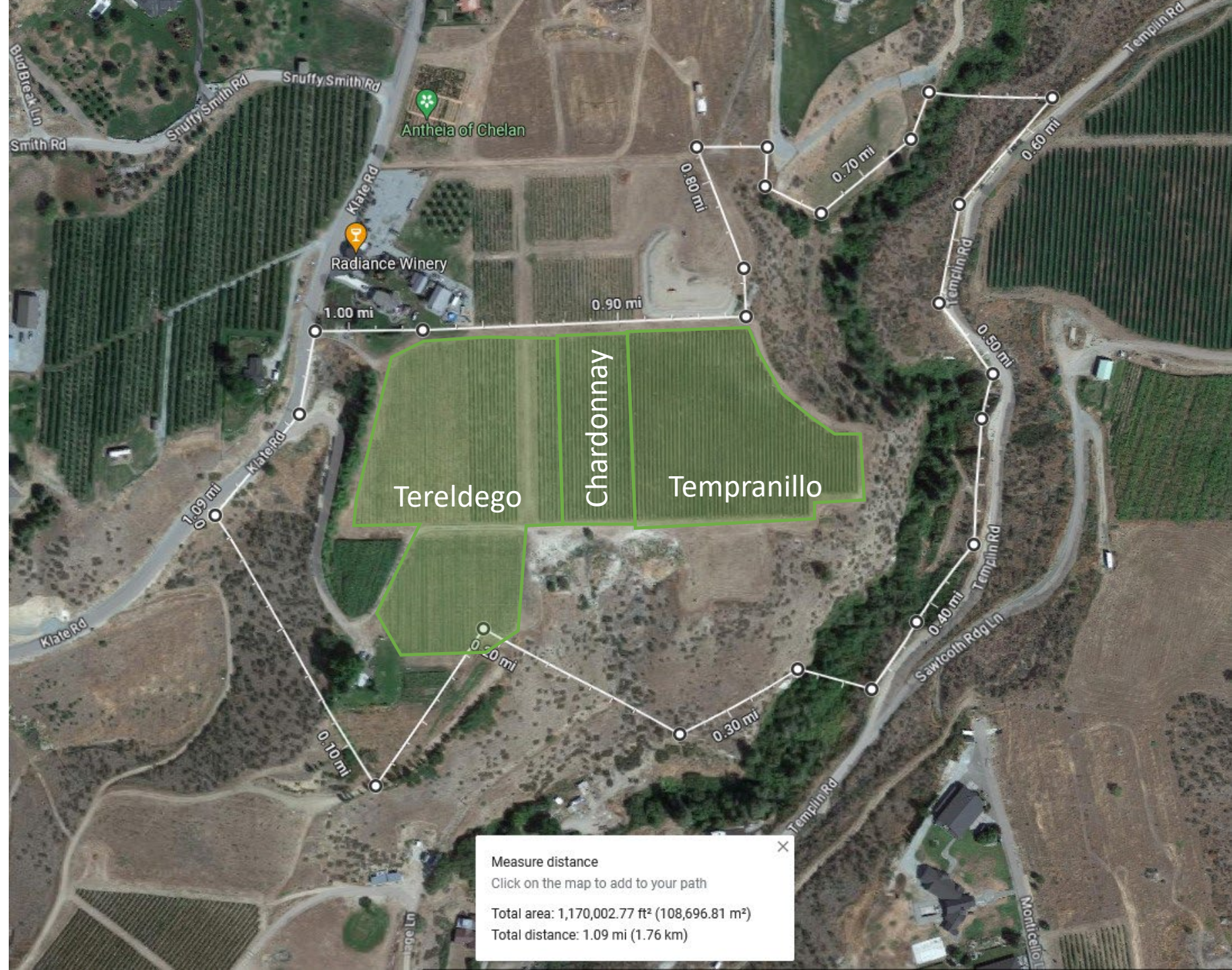




# Vineyard Blocks

## Key Features

- New planting
- Chardonnay – 1.15 Acres
- Tempranillo – 3 Acres
- Tereldego – 4 Acres
- Irrigation Water
- Possibility for domestic water
- Used in Lake Chelan Winery's production





# NE Corner: 6 Acres

## Key Features

- Adjacent to Crowder Block
- Buffer for Neighbors
- Creek



Measure distance

Click on the map to add to your path

Total area: 275,071.79 ft<sup>2</sup> (25,555.01 m<sup>2</sup>)

Total distance: 2,911.84 ft (887.53 m)



# Southern

## Section: 12 Acres

### Key Features

- Some New planting
- Irrigation Water
- Domestic water permit pending with Dept of Ecology
- Well location



Measure distance

Click on the map to add to your path

Total area: 557,997.24 ft<sup>2</sup> (51,839.64 m<sup>2</sup>)

Total distance: 4,608.92 ft (1.40 km)