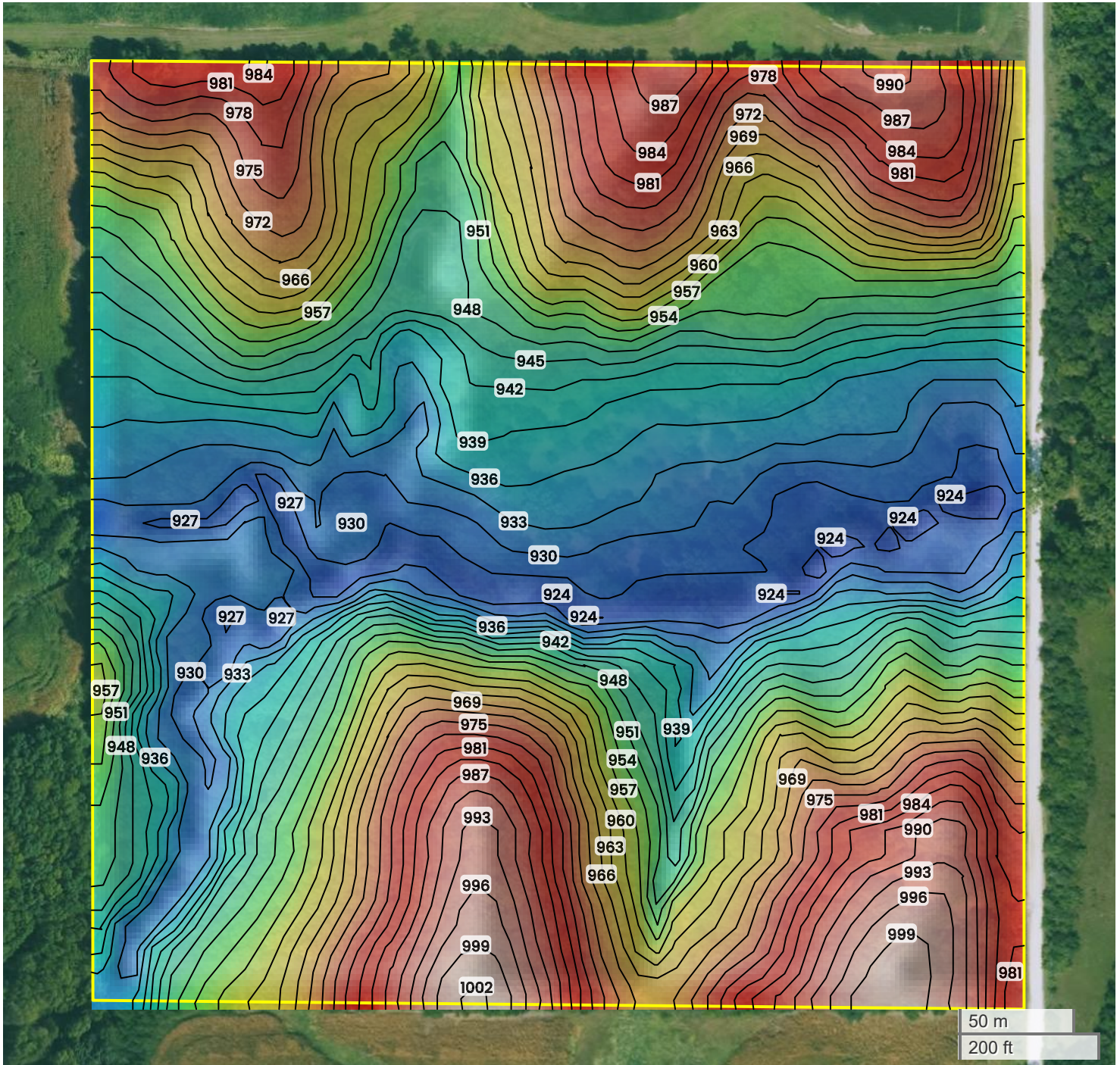




ROBERT E. BUTTERS FARM
TOPOGRAPHY



924 ft

1002 ft



Center: 41.166240, -93.483057

34-74N-23W

Liberty Township
Warren County, IA

Source: USGS 10m DEM

Interval(ft): 3

Max: 1002.0 ft

Min: 924.0 ft

Range: 78.0 ft

Average: 963.0 ft

FarmWorth, LLC makes no representations or warranties, express or implied, as to the accuracy of any information, data, numerical values, boundaries, or any other information generated through the use of FarmWorth.com. User is solely responsible for independently investigating and determining all information provided through FarmWorth.com prior to use and waives any and all claims against FarmWorth, LLC for any inaccuracies or inconsistencies in the information and/or data.

