



Hunting, Recreational & Investment Land

264th Trail, Albia, IA 52531

**Hawkeye Farm
Mgmt & Real Estate**

Price: \$472,000

Acres: 80 +/-

Price/Acre: \$5,900







PROPERTY DETAILS

- Beautiful Rolling Hills, Brush, Cedar Thickets, & Mature Hardwoods
- 32 +/- Open Acres Generating \$7,300 Annual Income from 2 CRP Contracts
- Future Home or Cabin Building Sites w/in 2.5 miles of Hwy J-18 or 4.5 miles of Hwy 5
- Top-Tier Recreational Property with Income
- Annual Taxes \$902

CONTACT US



**Hawkeye
Farm Mgmt &
Real Estate**

 (641) 932-7796
 Hawkeye@UCIowa.com
 www.UCIowa.com
 1010 S Clinton
Albia, IA 52531



RYAN AMMONS

(641) 777- 2955

Ryan@UCIowa.com



NATE AMMONS

(641) 777-2861

Nate@UCIowa.com



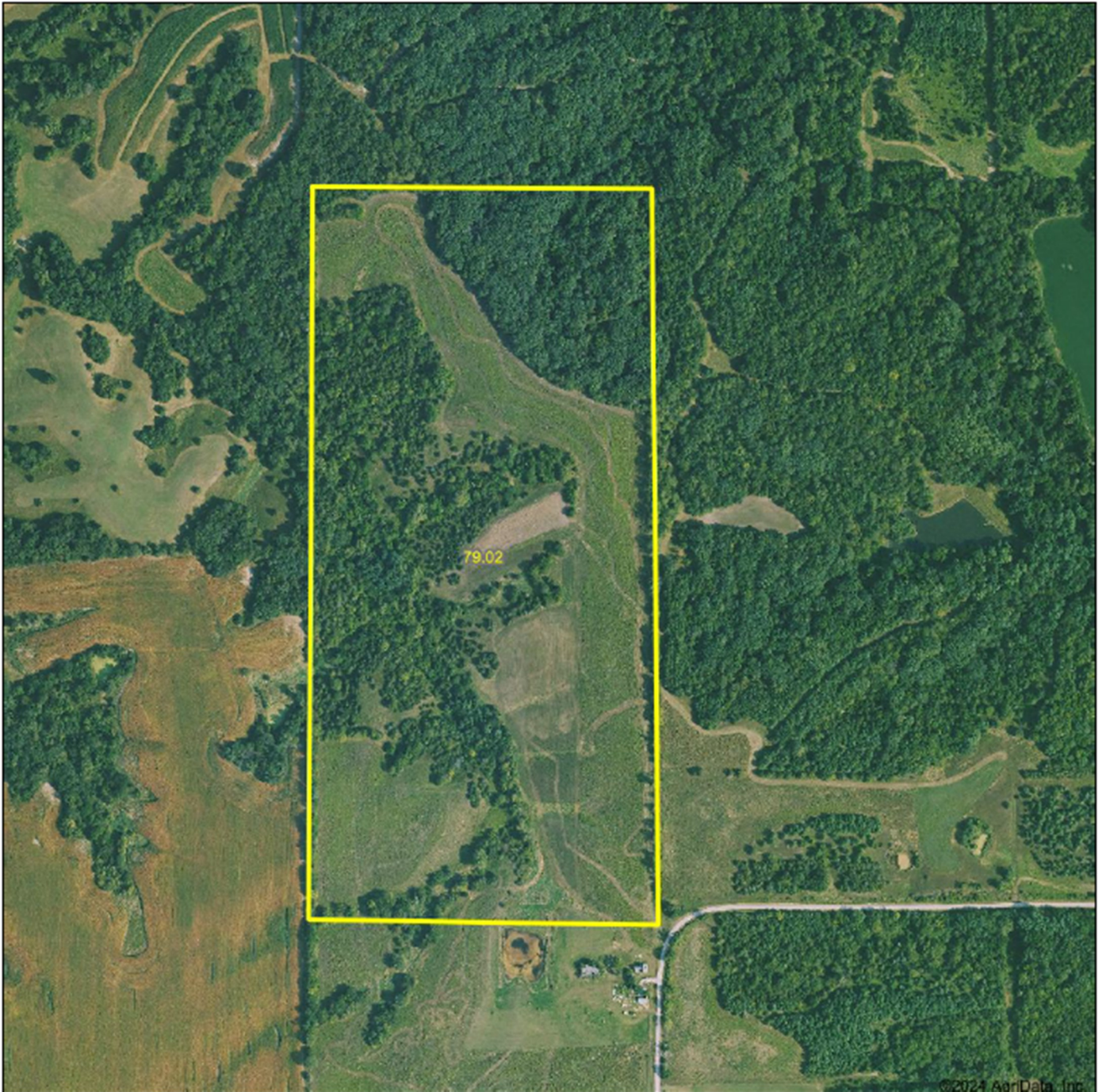
Alan Ammons, Broker, Licensed in Iowa & Missouri. All Agents Licensed in Iowa. The above information, although believed to be accurate, is not warranted or guaranteed by the owner, listing firm, or listing agent.

PROPERTY MAP



**Hawkeye
Farm Mgmt &
Real Estate**

Aerial Map



Hawkeye Farm Mgmt & Real Estate



Boundary Center: 40° 55' 51.84, -92° 51' 58.62

0ft 575ft 1148ft



**19-71N-17W
Monroe County
Iowa**



10/10/2024

Property is owned by the Listing Broker & Listing Agents are related to owner.