

The Northeast Quarter 14-23-36

Kearny County, Kansas



HUTCHESON

Real Estate & Auction

(620) 355-7991

www.hutchreal.com



The Northeast Quarter 14-23-36

Kearny County, Kansas

Legal Description

The Northeast Quarter (NE/4) of Section Fourteen (14), Township Twenty-three (23) South, Range Thirty-six (36) West of the Sixth P.M., Kearny County, Kansas.

Description of the land

This tract consists of 160 total acres of which approximately 144.2 acres are enrolled into the CRP program and the remaining 15.8 acres are in native grass. The CRP payment has an annual payment of \$5,965.55 or \$41.37 per acre and expires 9-30-2026.

Possession

The Buyer shall receive the 2025 and 2026 CRP payment.

Minerals

This tract is selling with the producing minerals.

Kleeman Gas Unit 2HI– 2023 Income \$410.81

Kleeman Gas Unit C/001- 2023 Income \$1,109.42

Kleeman Gas Unit C-3– 2023 Income \$480.74

Total 2023 Gas Income \$2,000.97

Real Estate Taxes

2023 Real Estate Taxes \$439.39

Driving Directions

This tract is located 7 miles North of Lakin to Road 220, the 2 miles East to Road T, then a 1/2 mile North on the trail road.

Asking Price

\$240,000/ \$1,500 Per Acre

The Northeast Quarter 14-23-36

Kearny County, Kansas



The Northeast Quarter 14-23-36

Kearny County, Kansas

Aerial Map



Maps Provided By:
surety
CUSTOMIZED ONLINE MAPPING
© AgriData, Inc. 2023 www.AgriDataInc.com

Boundary Center: 38° 3' 25.77, -101° 14' 7.22

14-23S-36W
Kearny County
Kansas

0ft 822ft 1644ft

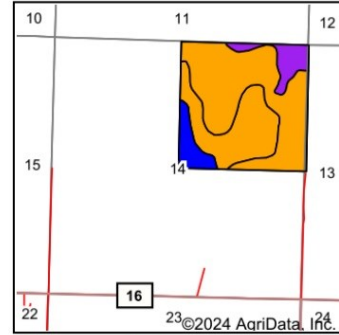
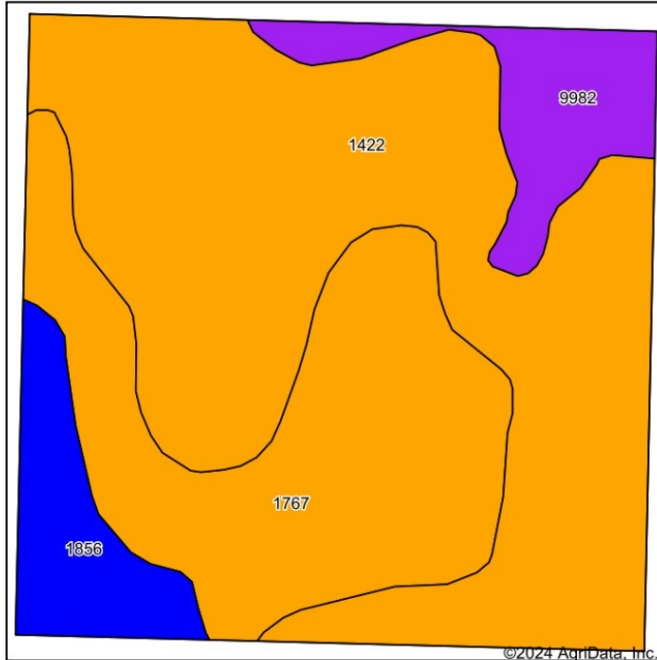


10/23/2024

The Northeast Quarter 14-23-36

Kearny County, Kansas

Soils Map



State: **Kansas**
County: **Kearny**
Location: **14-23S-36W**



Maps Provided By:
surety
CUSTOMIZED ONLINE MAPPING
© AgriData, Inc. 2023 www.AgriDataInc.com



Soils data provided by USDA and NRCS.

Area Symbol: KS093, Soil Area Version: 20

Code	Soil Description	Acres	Percent of field	Non-Irr Class Legend	Non-Irr Class *c	Irr Class *c	Alfalfa hay Irrigated Tons	Corn Irrigated Bu	Grain sorghum Bu	Grain sorghum Irrigated Bu	Winter wheat Bu	Winter wheat Irrigated Bu	*n NCCPI Soybeans
1422	Goshen silt loam, rarely flooded	87.55	55.2%		IIIc	Iw	5	118	34	98	34	69	55
1767	Richfield-Penden complex, 1 to 3 percent slopes	46.09	29.0%		IIIe	Ile	4	132	30	111	27	52	42
9982	Fluvents, frequently flooded	13.23	8.3%		Vlw								
1856	Ulysses silt loam, 0 to 1 percent slopes	11.95	7.5%		IIc	Iw			26		22		63
Weighted Average					3.17	*-	3.9	103.4	29.4	86.2	28.2	53.1	*n 47.2

*n: The aggregation method is "Weighted Average using all components"

*c: Using Capabilities Class Dominant Condition Aggregation Method

*- Irr Class weighted average cannot be calculated on the current soils data due to missing data.

Soils data provided by USDA and NRCS.

The Northeast Quarter 14-23-36

Kearny County, Kansas

