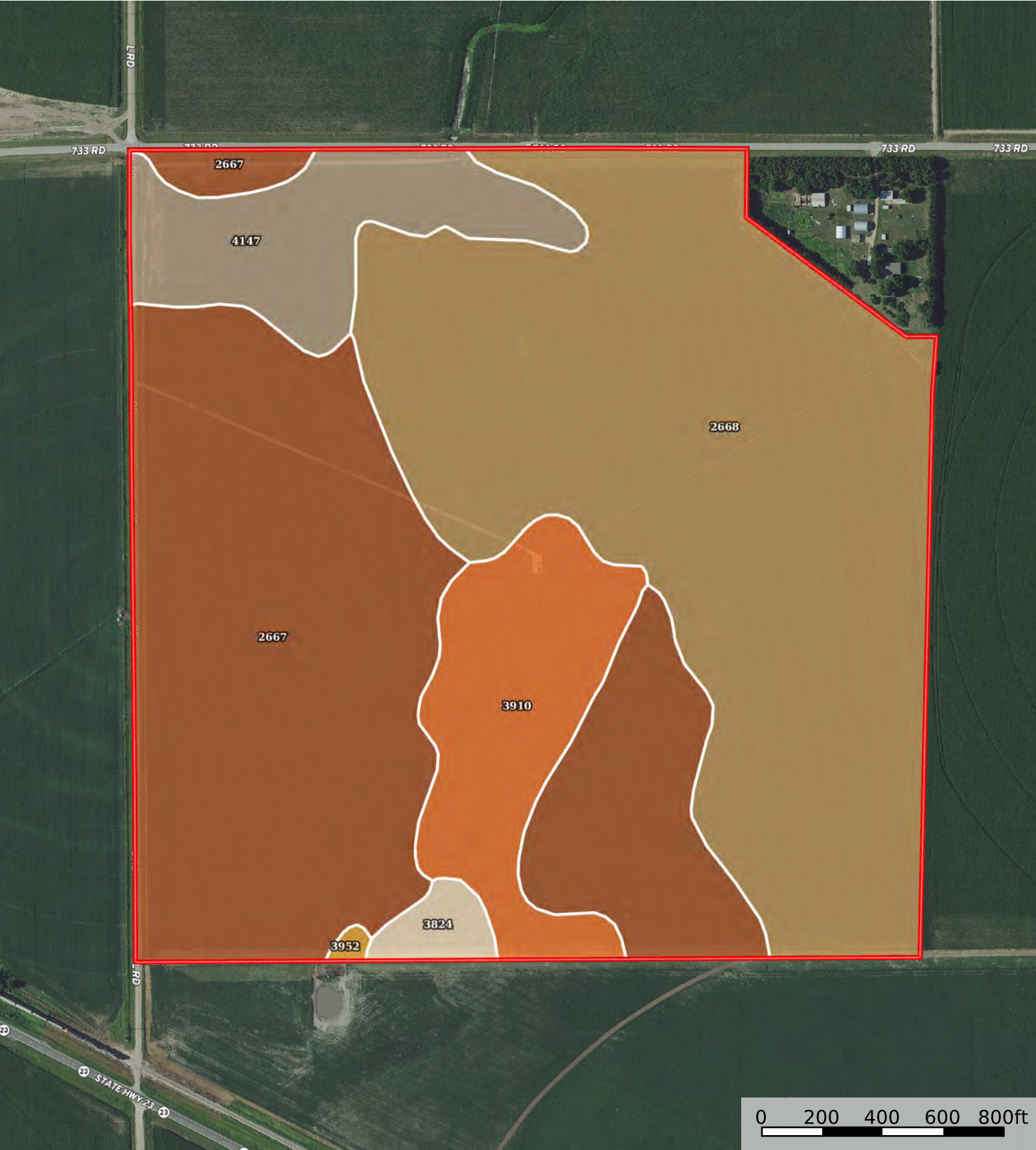
 Boundary



Boundary

|  Boundary 156.39 ac

SOIL CODE	SOIL DESCRIPTION	ACRES	%	CPI	NCCPI	CAP
2668	Holdrege silt loam, 1 to 3 percent slopes	68.66	43.9	0	79	2e
2667	Holdrege silt loam, 0 to 1 percent slopes	58.8	37.6	0	80	2e
3910	Scott silt loam, frequently ponded	14.62	9.35	0	27	4w
4147	Holdrege soils, 3 to 7 percent slopes, severely eroded	12.2	7.8	0	61	3e
3824	Crete silt loam, 0 to 1 percent slopes	1.83	1.17	0	63	2s
3952	Fillmore silt loam, frequently ponded	0.28	0.18	0	45	3w
TOTALS		156.39(*)	100%	-	72.86	2.27









(*) Total acres may differ in the second decimal compared to the sum of each acreage soil. This is due to a round error because we only show the acres of each soil with two decimal.

Capability Legend

Increased Limitations and Hazards

Decreased Adaptability and Freedom of Choice Users

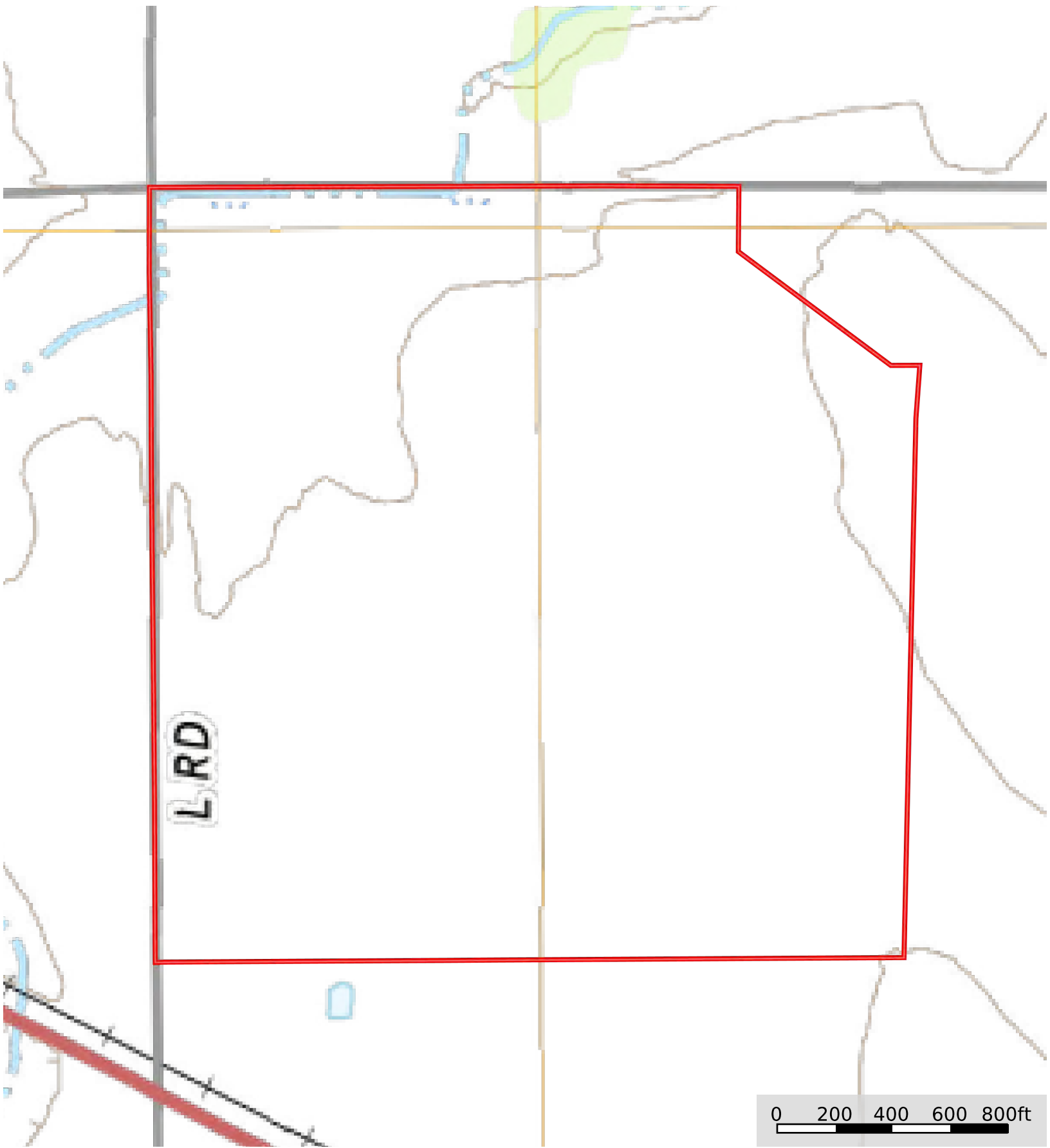
Land, Capability


								
	1	2	3	4	5	6	7	8
'Wild Life'	•	•	•	•	•	•	•	•
Forestry	•	•	•	•	•	•	•	
Limited	•	•	•	•	•	•	•	
Moderate	•	•	•	•	•	•		
Intense	•	•	•	•	•			
Limited	•	•	•	•				
Moderate	•	•	•					
Intense	•	•						
Very Intense	•							

Grazing Cultivation


(c) climatic limitations (e) susceptibility to erosion

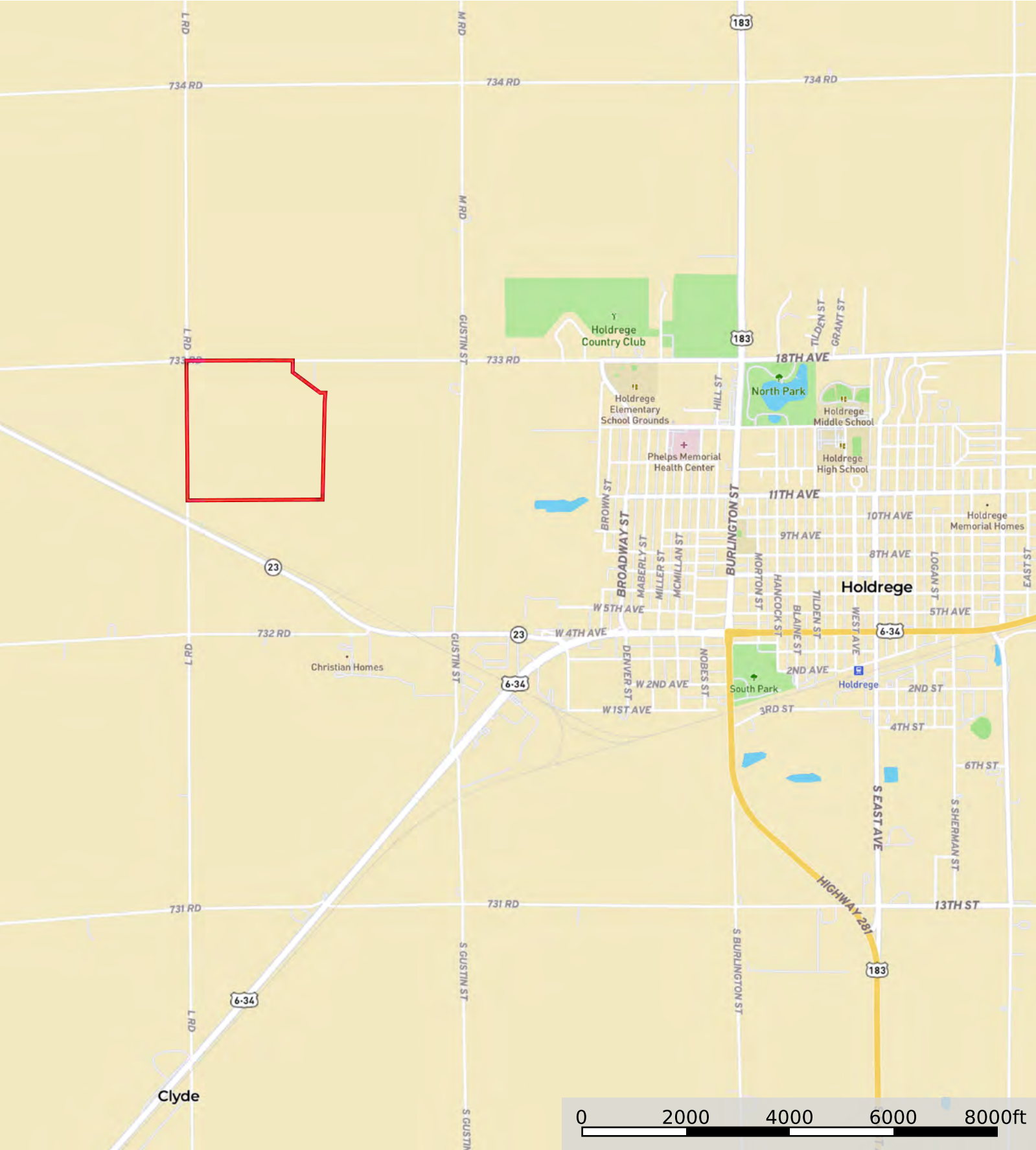
(s) soil limitations within the rooting zone (w) excess of water




 Boundary



 Boundary



 Boundary