

Tippah County Retreat | 12.95 ± Acres



For Sale

\$30,000

About the Property

With easy access along gravel County Road 312, and power and county water available on the road, this timberland property offers many opportunities. There are excellent building sites for a cabin in the woods or your dream country home for raising a family, enjoying retirement, or simply a getaway. This property is predominantly pine, around 20 years old; so whether it's whitetail deer or wild turkey hunting, taking a walk in the woods, or simply being at one with nature, this can be your paradise. This tract is also only two miles away from Holly Springs National Forest, expanding your hunting / recreational options.

Real Estate Agent / owner

Facts and Features

Tippah County, Mississippi

County Road 312, Tiplersville, MS 38674

12.95 ± Acres

Best Use: Residential, Recreational



**SOUTH MAIN
LAND REALTY**

Clyde Brisendine

Office: (256) 383-8990
cbrisendine@southmainrealty.com



Maxar, Microsoft

Legend

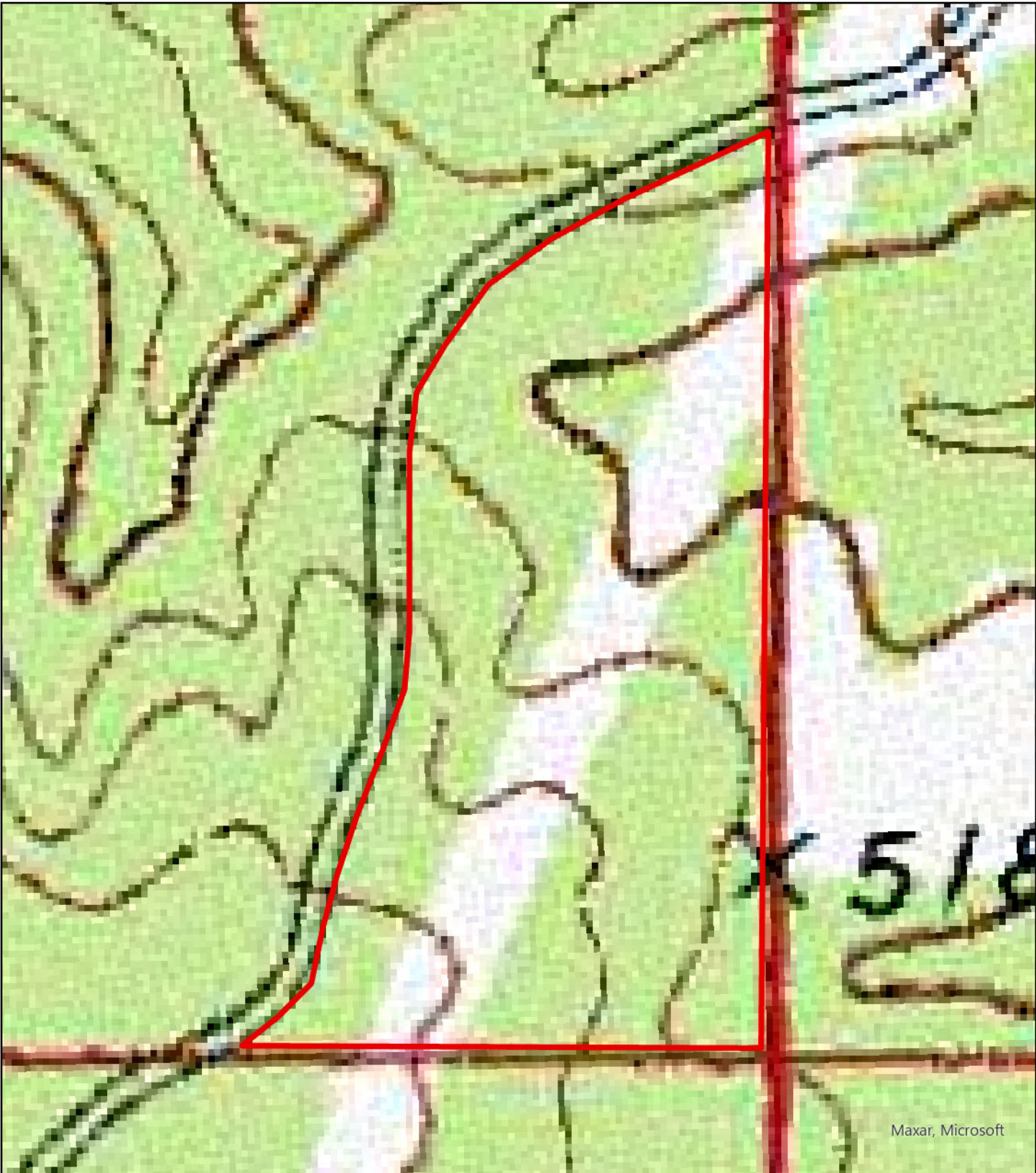
 WCB01b

WCB01b
Tippah County, MS
Aerial

South Main Land Realty | (256) 383-8990



0 140 280 Feet



Maxar, Microsoft

Legend

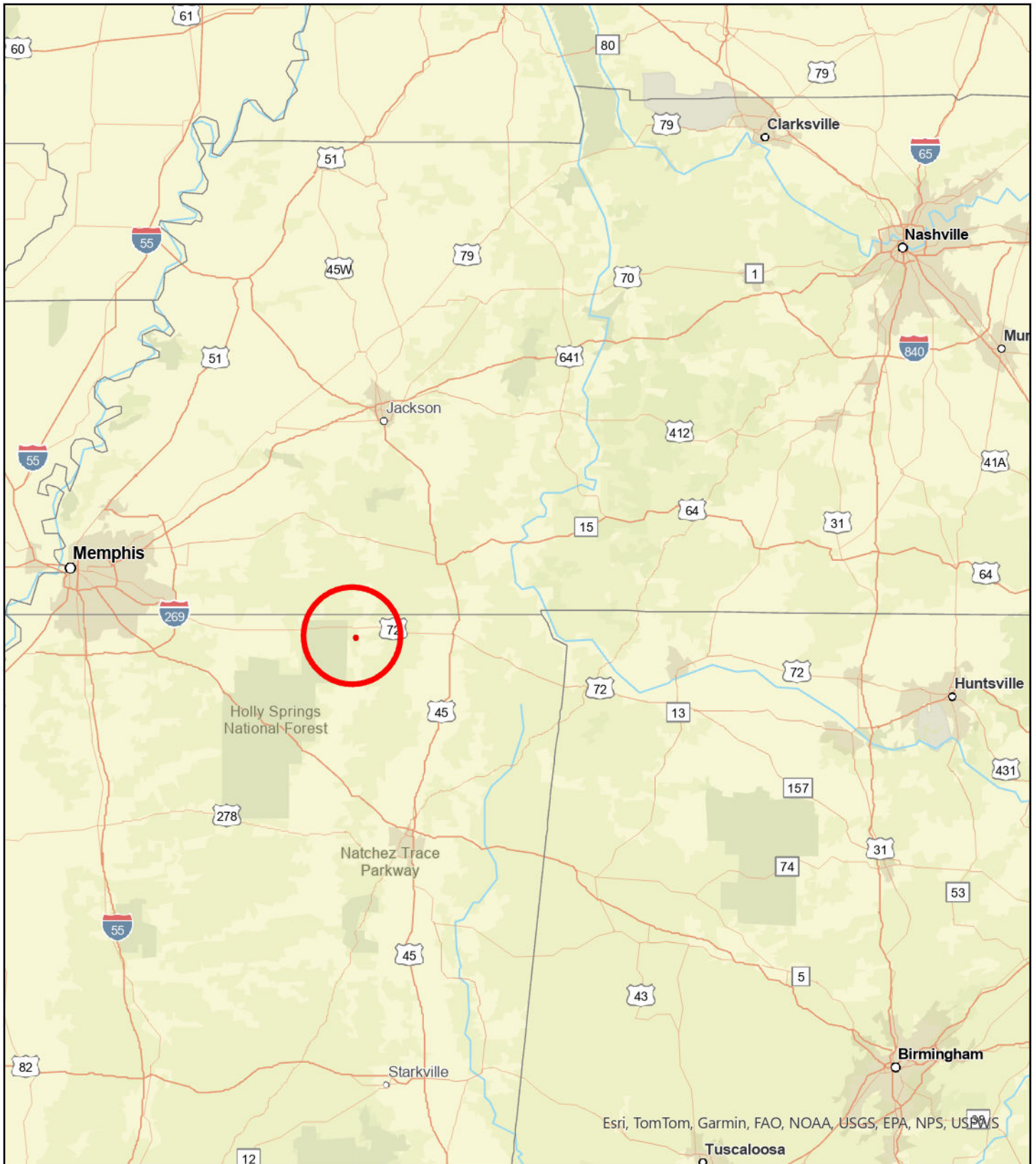
 WCB01b

WCB01b
Tippah County, MS
Topo


South Main Land Realty | (256) 383-8990



0 140 280 Feet



Legend

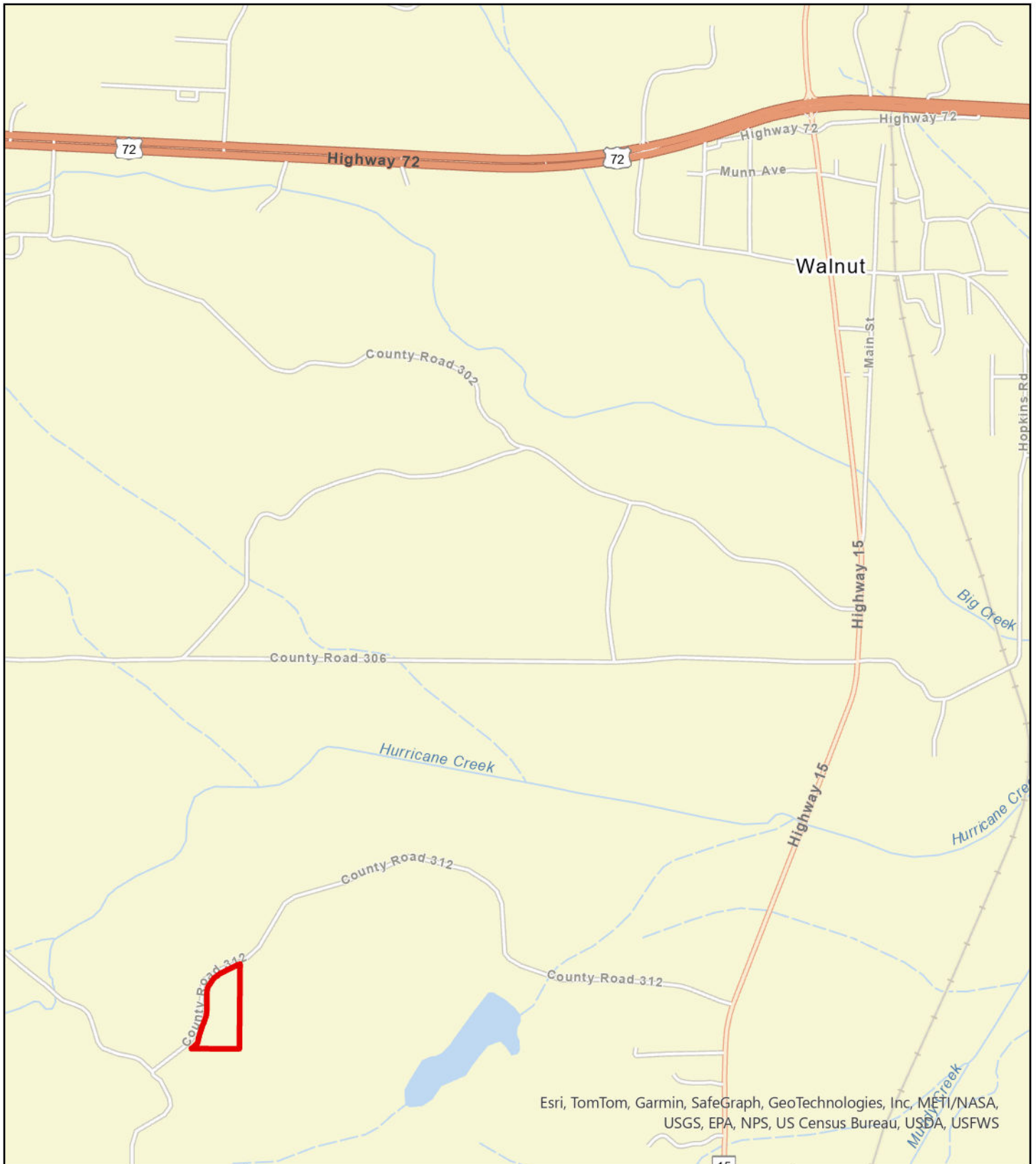
 WCB01b

WCB01b
Tippah County, MS
General Area Map

South Main Land Realty | (256) 383-8990



0 20 40 Miles



Legend

 WCB01b

WCB01b Tippah County, MS Road Map

South Main Land Realty | (256) 383-8990



0 0.25 0.5 Miles