

# PROPERTY INFORMATION PACKET | THE DETAILS



**161.4 +/- Acres on SE 130 Ave | Murdock, KS 67111**

AUCTION: BIDDING OPENS: Tues, Nov 12<sup>th</sup> @ 2:00 PM

BIDDING CLOSING: Thurs, Nov 21<sup>st</sup> @ 2:30 PM

12041 E. 13th St. N. · Wichita, KS 67206  
316.867.3600 · 800.544.4489 · [McCurdy.com](http://McCurdy.com)



**McCurdy**  
REAL ESTATE & AUCTION



## **Table of Contents**

PROPERTY DETAIL PAGE  
TERMS AND CONDITIONS  
WATER WELL ORDINANCE  
FSA REPORT  
ZONING MAP  
FLOOD ZONE MAP  
AERIAL MAP  
BRRETA DISCLOSURE  
GUIDE TO AUCTION COSTS

ALL FIELDS CUSTOMIZABLE



MLS # 646561  
Class Land  
Property Type Farm  
County Kingman  
Area SCKMLS  
Address 161.4 +/- Acres SE 130 Ave  
Address 2  
City Murdock  
State KS  
Zip 67111  
Status Active  
Contingency Reason  
Asking Price \$0  
For Sale/Auction/For Rent Auction  
Associated Document Count 0



GENERAL

List Agent - Agent Name and Phone	Isaac Klingman	List Date	10/17/2024
List Office - Office Name and Phone	McCurdy Real Estate & Auction, LLC - OFF: 316-867-3600	Realtor.com Y/N	Yes
Co-List Agent - Agent Name and Phone		Display on Public Websites	Yes
Co-List Office - Office Name and Phone		Display Address	Yes
Showing Phone	1-888-874-0581	VOW: Allow AVM	Yes
Zoning Usage	Agriculture	VOW: Allow 3rd Party Comm	Yes
Parcel ID	210-1292900000003000	Virtual Tour Y/N	
Number of Acres	161.40		
Price Per Acre	0.00		
Lot Size/SqFt	7030584		
School District	Cheney School District (USD 268)		
Elementary School	Cheney		
Middle School	Cheney		
High School	Cheney		
Subdivision	NONE LISTED ON TAX RECORD		
Legal			

DIRECTIONS

Directions (Murdock) SE 40 St. & SE 130 Ave - South to Property.

FEATURES

SHAPE / LOCATION	IMPROVEMENTS	SALE OPTIONS	LOCKBOX
Rectangular	None	None	None
TOPOGRAPHIC	OUTBUILDINGS	EXISTING FINANCING	AGENT TYPE
Level	None	Other/See Remarks	Sellers Agent
PRESENT USAGE	MISCELLANEOUS FEATURES	PROPOSED FINANCING	OWNERSHIP
Tillable	None	Other/See Remarks	Individual
ROAD FRONTAGE	DOCUMENTS ON FILE	POSSESSION	TYPE OF LISTING
Dirt	Photographs	At Closing	Excl Right w/o Reserve
UTILITIES AVAILABLE	FLOOD INSURANCE	SHOWING INSTRUCTIONS	BUILDER OPTIONS
Other/See Remarks	Unknown	Call Showing #	Open Builder

FINANCIAL

Assumable Y/N	No
General Taxes	\$269.16
General Tax Year	2023
Yearly Specials	\$0.00
Total Specials	\$0.00
HOA Y/N	No
Yearly HOA Dues	
HOA Initiation Fee	
Earnest \$ Deposited With	Security 1st Title



PUBLIC REMARKS

**Public Remarks** Property offered at ONLINE ONLY auction. BIDDING OPENS: Tuesday, November 12th, 2024 at 2 PM (cst) | BIDDING CLOSING: Thursday, November 21st, 2024 at 2:30 PM (cst). Bidding will remain open on this property until 1 minute has passed without receiving a bid. Property available to preview by appointment. CLEAR TITLE AT CLOSING, NO BACK TAXES. ONLINE ONLY!!! NO MINIMUM, NO RESERVE!!! Exceptional opportunity to acquire 161+/- acres of agricultural land in eastern Kingman County, Kansas. Whether you're looking to expand your farming operation or invest in Kansas farmland, this property offers excellent potential. Features: 161.4+/- acres S29, T28, R05W, SE4 EXC R/W Tillable land Rebuilt terraces approx. 5-6 years ago 10 minutes SE of Murdock 6 miles SW of Cheney Do not miss out on your chance to purchase this quarter section of tillable Kingman County land selling regardless of price! Crops planted at the time of sale are subject to tenant farmer. All mineral, water and oil rights transfer with the real estate to the buyer Definition of 'selling by the acre': A method of sale often used for agricultural or undeveloped acreage in which bids are made based on a per acre price. By way of example, if a 160-acre parcel was offered "by the acre" the high bid may be \$5,000 an acre. That amount would then be multiplied times the total acreage to arrive at a total bid price of \$800,000 (plus Buyer's Premium, if applicable). For the purposes of calculating the total sales price, the acreage will be rounded to the nearest whole acre. For example, a parcel with 158.7 acres would be offered as 159 acres or a parcel is 158.3 would be offered as 158 acres. \*Buyer should verify school assignments as they are subject to change. The real estate is offered at public auction in its present, "as is where is" condition and is accepted by the buyer without any expressed or implied warranties or representations from the seller or seller's agents. Full auction terms and conditions provided in the Property Information Packet. Total purchase price will include a 10% buyer's premium (\$2,500.00 minimum) added to the final bid. Property available to preview by appointment. Earnest money is due from the high bidder at the auction in the form of cash, check, or immediately available, certified funds in the amount of \$20,000.

AUCTION

Auction Date	11/12/2024	Auction Location	www.mccurdy.com
Auction Offering	Real Estate Only	Auction Start Time	2:00 PM
1 - Open for Preview		1 - Open End Time	
Broker Reg Deadline	11/20/2024 by 5:00 PM	Broker Registration Req	Yes
Buyer Premium Y/N	Yes		

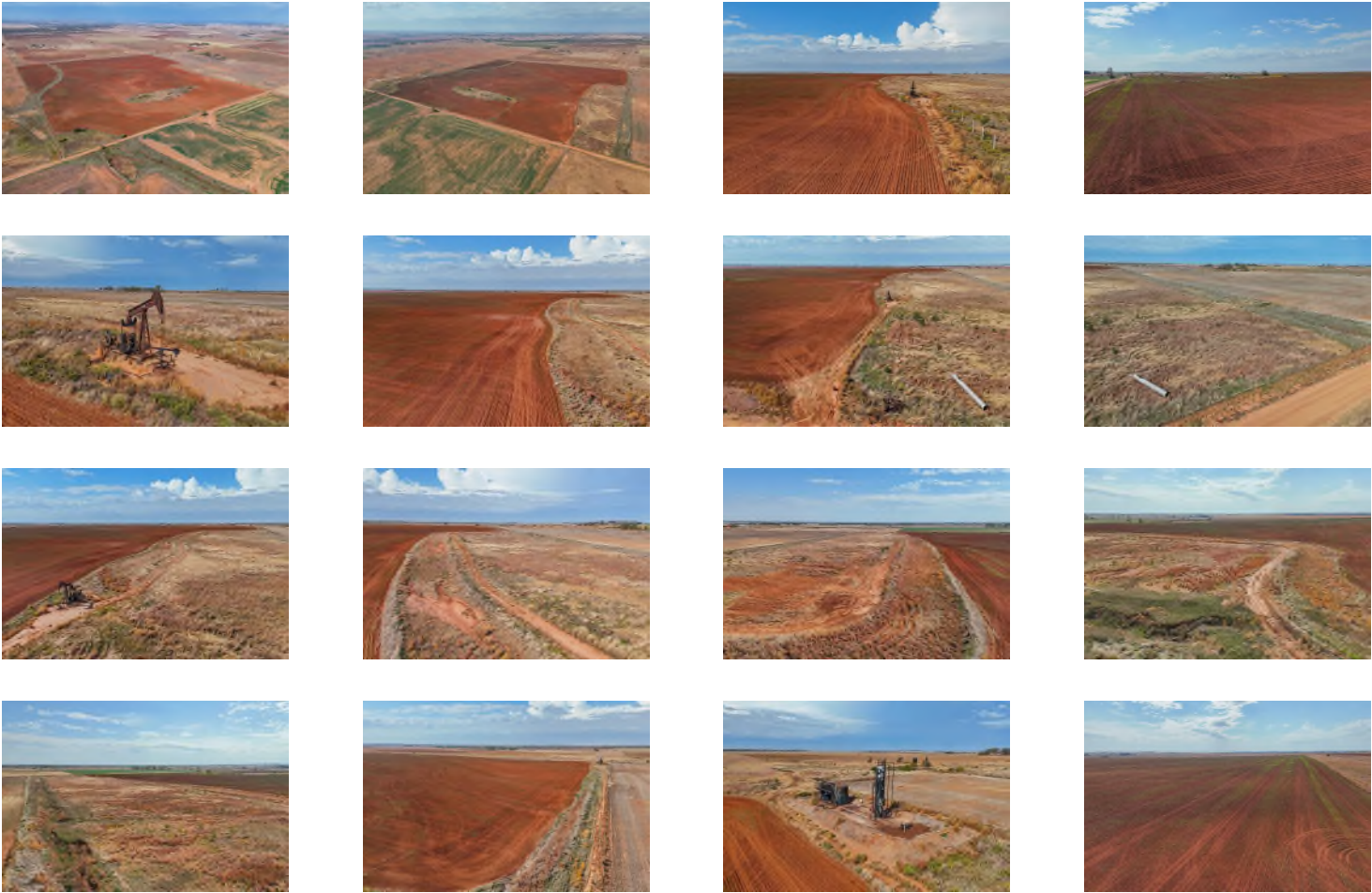
TERMS OF SALE

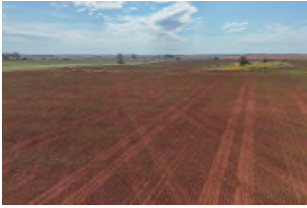
Terms of Sale

PERSONAL PROPERTY

Personal Property

ADDITIONAL PICTURES





**DISCLAIMER**

This information is not verified for authenticity or accuracy and is not guaranteed. You should independently verify the information before making a decision to purchase. © Copyright 2024 South Central Kansas MLS, Inc. All rights reserved. Please be aware, property may have audio/video recording devices in use.

### TERMS AND CONDITIONS

Thank you for participating in today's auction. The auction will be conducted by McCurdy Real Estate & Auction, LLC ("McCurdy") on behalf of the owner of the real estate (the "Seller"). The real estate offered for sale at auction (the "Real Estate") is fully described in the Contract for Purchase and Sale, a copy of which is available for inspection from McCurdy.

1. Any person who registers or bids at this Auction (the "Bidder") agrees to be bound by these Terms and Conditions, the auction announcements, and, in the event that Bidder is the successful bidder, the Contract for Purchase and Sale. A bid placed by Bidder will be deemed conclusive proof that Bidder has read, understands, and agrees to be bound by these Terms and Conditions.
2. The Real Estate is not offered contingent upon inspections. The Real Estate is offered at public auction in its present, "as is where is" condition and is accepted by Bidder without any expressed or implied warranties or representations from Seller or McCurdy, including, but not limited to, the following: the condition of the Real Estate; the Real Estate's suitability for any or all activities or uses; the Real Estate's compliance with any laws, rules, ordinances, regulations, or codes of any applicable government authority; the Real Estate's compliance with environmental protection, pollution, or land use laws, rules, regulations, orders, or requirements; the disposal, existence in, on, or under the Real Estate of any hazardous materials or substances; or any other matter concerning the Real Estate. It is incumbent upon Bidder to exercise Bidder's own due diligence, investigation, and evaluation of suitability of use for the Real Estate prior to bidding. It is Bidder's responsibility to have any and all desired inspections completed prior to bidding including, but not limited to, the following: roof; structure; termite; environmental; survey; encroachments; easements; covenants; groundwater; flood designation; presence of lead-based paint or lead based paint hazards; presence of radon; presence of asbestos; presence of mold; electrical; appliances; heating; air conditioning; mechanical; plumbing (including water well, septic, or lagoon compliance); sex offender registry information; flight patterns; or any other desired inspection. Bidder acknowledges that Bidder has had an opportunity to inspect the Real Estate prior to the auction and that Bidder has either performed all desired inspections or accepts the risk of not having done so. Any information provided by Seller or McCurdy has been obtained from a variety of sources. Seller and McCurdy have not made any independent investigation or verification of the information and make no representation as to its accuracy or completeness. In bidding on the Real Estate, Bidder is relying solely on Bidder's own investigation of the Real Estate and not on any information provided or to be provided by Seller or McCurdy.
3. Notwithstanding anything herein to the contrary, to the extent any warranties or representations may be found to exist, the warranties or representations are between Seller and Bidder. McCurdy may not be held responsible for the correctness of any such representations or warranties or for the accuracy of the description of the Real Estate.
4. It is the sole responsibility of Bidder to monitor McCurdy's website with respect to any updates or information regarding any Real Estate on which Bidder is bidding. Bidder acknowledges that information regarding the Real Estate may be updated or changed on McCurdy's website at any time prior to the conclusion of bidding and that Bidder has timely reviewed the Real Estate information or assumes the risk of not having done so.
5. There will be a 10% buyer's premium (\$2,500.00 minimum) added to the final bid. The buyer's premium, together with the final bid amount, will constitute the total purchase price of the Real Estate.
6. The Real Estate is not offered contingent upon financing or appraisal.
7. In the event that Bidder is the successful bidder, Bidder must immediately execute the Contract for Purchase and Sale and tender a nonrefundable earnest money deposit in the form of cash, check, ACH or immediately available, certified funds in the amount set forth by McCurdy, by 4:00 p.m. (CST) on the business day following the auction. In the event that Bidder fails to pay the aforementioned earnest money by the time set forth above, Seller may terminate this Contract and proceed forward with selling the Real Estate to another buyer in addition to all other rights Seller may have under these Terms and Conditions. The balance of the purchase price will be due in immediately available, certified funds at closing on the specified closing date. The Real Estate must close within 30 days of the date of the auction, or as otherwise agreed to by Seller and Bidder.



8. In the event the nonrefundable earnest money required to be paid as set forth above is in excess of the purchase price, the earnest money amount shall be reduced to the purchase price which Bidder will be required to pay under the same provisions as set forth above.
9. Auction announcements, postings or notifications (as applicable) take precedence over anything previously stated or printed, including these Terms and Conditions.
10. In the event of a conflict between these Terms and Conditions and any other rules, terms, or agreements governing the use of the online bidding platform, these Terms and Conditions govern.
11. These Terms and Conditions, especially as they relate to the qualifications of potential bidders, are designed for the protection and benefit of Seller and do not create any additional rights or causes of action for Bidder. On a case-by-case basis, and at the sole discretion of Seller or McCurdy, exceptions to certain Terms and Conditions may be made.
12. Bidder's bid constitutes an irrevocable offer to purchase the Real Estate and Bidder will be bound by said offer. If the successful Bidder fails or refuses to execute the Contract for Purchase and Sale, Bidder acknowledges that, at the sole discretion of Seller, these signed Terms and Conditions together with the Contract for Purchase and Sale executed by the Seller are to be construed together for the purposes of satisfying the statute of frauds and will collectively constitute an enforceable agreement between Bidder and Seller for the sale and purchase of the Real Estate.
13. It is the responsibility of Bidder to make sure that McCurdy is aware of Bidder's attempt to place a bid. McCurdy disclaims any liability for damages resulting from bids not spotted, executed, or acknowledged. McCurdy is not responsible for errors in bidding and Bidder releases and waives any claims against McCurdy for bidding errors.
14. Bidder authorizes McCurdy to film, photograph, or otherwise record the voice or image of Bidder (at live events) and any guests or minors accompanying Bidder at this auction or components of the auction process and to use the films, photographs, recordings, or other information about the auction, including the sales price of the Real Estate, for promotional or other commercial purposes. Bidder also agrees that this information may remain in the public domain for perpetuity. The Real Estate may have audio and/or video recording in use.
15. Broker/agent participation is invited. Broker/agents must fulfill the responsibilities and obligations set forth in the Broker Registration form to qualify for a cooperation/referral fee. To register, the completed form must be received and registered with McCurdy no later than 5 p.m. on the business day prior to the auction. In the event they have not fulfilled the requirements for participation, you may be responsible for the financial obligations with them.
16. McCurdy is acting solely as agent for Seller and not as an agent for Bidder. McCurdy is not a party to any Contract for Purchase and Sale between Seller and Bidder. In no event will McCurdy be liable to Bidder for any damages, including incidental or consequential damages, arising out of or related to this auction, the Contract for Purchase and Sale, or Seller's failure to execute or abide by the Contract for Purchase and Sale.
17. Neither Seller nor McCurdy, including its employees and agents, will be liable for any damage or injury to any property or person at or upon the Real Estate. Any person entering on the Real Estate assumes any and all risks whatsoever for their safety and for any minors or guests accompanying them. Seller and McCurdy expressly disclaim any "invitee" relationship and are not responsible for any defects or dangerous conditions on the Real Estate, whether obvious or hidden. Seller and McCurdy are not responsible for any lost, stolen, or damaged property.
18. McCurdy reserves the right to establish all bidding increments. Should the Bidder have any request on increments, it is the responsibility of Bidder to call McCurdy within a reasonable time prior to the conclusion of the auction.
19. McCurdy may, in its sole discretion, reject, disqualify, or refuse any bid believed to be fraudulent, illegitimate, not in good faith, made by someone who is not competent, or made in violation of these Terms and Conditions or applicable law.
20. When creating an online bidding account, Bidder must provide complete and accurate information. Bidder is solely responsible for maintaining the confidentiality and security of their online bidding account and accepts full

responsibility for any use of their online bidding account. In the event that Bidder believes that their account has been compromised, Bidder must immediately inform McCurdy at [auctions@mccurdy.com](mailto:auctions@mccurdy.com).

21. Bidder uses the online bidding platform at Bidder's sole risk. McCurdy is not responsible for any errors or omissions relating to the submission or acceptance of online bids. McCurdy makes no representations or warranties as to the online bidding platform's uninterrupted function or availability and makes no representations or warranties as to the online bidding platform's compatibility or functionality with Bidder's hardware or software. Neither McCurdy nor any individual or entity involved in creating or maintaining the online bidding platform will be liable for any damages arising out of Bidder's use or attempted use of the online bidding platform, including, but not limited to, damages arising out of the failure, interruption, unavailability, or delay in operation of the online bidding platform.
22. The ability to "pre-bid" or to place a maximum bid prior to the start of the auction is a feature offered solely for Bidder's convenience and should not be construed as a call for bids or as otherwise beginning the auction of any particular lot. Pre-bids will be held by McCurdy until the auction is initiated and will not be deemed submitted or accepted by McCurdy until the auction of that particular lot is formally initiated by McCurdy. If you are bidding against a previously placed max bid or pre-bid, the bid placed first will take precedence. If you leave a maximum bid, the bidding platform will bid up to that amount on your behalf and will only use your maximum/whole bid if necessary.
23. In the event of issues relating to the availability or functionality of the online bidding platform during the auction, McCurdy may, in its sole discretion, elect to suspend, pause, or extend the scheduled closing time of the auction. This will be a timed online auction and absentee bids which will be entered into the bidding as they are received. If you leave a maximum bid, the bidding platform will bid up to that amount on your behalf and will only use your maximum/whole bid if necessary.
24. Bidder may not use the online bidding platform in any manner that is a violation of these Terms and Conditions or applicable law, or in any way that is designed to damage, disable, overburden, compromise, or impair the function of the online bidding platform, the auction itself, or any other party's use or enjoyment of the online bidding platform.
25. Bidder represents and warrants that they are bidding on their own behalf and not on behalf of or at the direction of Seller.
26. The Real Estate is offered for sale to all persons without regard to race, color, religion, sex, handicap, familial status, or national origin.
27. These Terms and Conditions are binding on Bidder and on Bidder's partners, representatives, employees, successors, executors, administrators, and assigns.
28. Bidder warrants and represents that they are at least 18 years of age and are fully authorized to bid.
29. In the event that any provision contained in these Terms and Conditions is determined to be invalid, illegal, or unenforceable by a court of competent jurisdiction, the validity, legality, and enforceability of the remaining provisions of the Terms and Conditions will not be in any way impaired.
30. These Terms and Conditions are to be governed by and construed in accordance with the laws of Kansas, but without regard to Kansas's rules governing conflict of laws. Exclusive venue for all disputes lies in either the Sedgwick County, Kansas District Court or the United States District Court in Wichita, Kansas. Bidder submits to and accepts the jurisdiction of such courts.
31. In the event that Bidder is the successful bidder but fails to comply with Bidder's obligations as set forth in these Terms and Conditions by 4:00 p.m. (CST) on the business day following the auction, then Bidder will be in breach of these Terms and Conditions and McCurdy may attempt to resell the Real Estate to other potential buyers. Regardless of whether McCurdy is able to successfully resell the Real Estate to another buyer, Bidder will remain liable to Seller for any damages resulting from Bidder's failure to comply with these Terms and Conditions.





## WATER WELL INSPECTION REQUIREMENTS

Property Address: 161.4 +/- Acres On SE 130 Ave - Murdock, KS 67111

**Each City and County have different inspection requirements. If you are required to do an inspection our office will email you the information.**

For properties within the *City of Wichita* the requirements are:

1. Any type of water well must have a Title Transfer Inspection performed prior to the transfer of the property. The property owner is required to notify the City of Wichita, Department of Environmental Services at the time the property is listed for sale and is responsible for the \$125.00 inspection fee. If the water well on the property is used for personal use (drinking, cooking, or bathing), the well must also be sampled to ensure that the water is potable. A sample fee of \$25.00 per sample will be charged, in addition to the inspection fee. If the well is for irrigation purposes only, the water sample is optional. The City of Wichita will bill for the inspection and sample.
2. All water wells must be located a minimum of 25 feet from a foundation that has been treated for termites (or will require treatment prior to transfer of ownership) with a subsurface pressurized application of a pesticide. Existing wells may remain in a basement so long as they are not within 10 feet of the main sewer line or within 25 feet of foundation if no termite treatment has occurred or is currently needed.

**DOES THE PROPERTY HAVE A WELL?** YES \_\_\_\_\_ NO X

If yes, what type? Irrigation \_\_\_\_\_ Drinking \_\_\_\_\_ Other \_\_\_\_\_

Location of Well: \_\_\_\_\_

**DOES THE PROPERTY HAVE A LAGOON OR SEPTIC SYSTEM?** YES \_\_\_\_\_ NO X

If yes, what type? Septic \_\_\_\_\_ Lagoon \_\_\_\_\_

Location of Lagoon/Septic Access: \_\_\_\_\_

Adam E. Chute  
Owner/Seller

10.17.24  
Date

Owner/Seller

Date

Buyer

Date

Buyer

Date

KANSAS  
KINGMAN

Form: FSA-156EZ

See Page 2 for non-discriminatory Statements.



United States Department of Agriculture  
Farm Service Agency

Abbreviated 156 Farm Record

FARM : 184

Prepared : 10/23/24 8:49 AM CST

Crop Year : 2025

Operator Name : CLINT F FOLEY  
CRP Contract Number(s) : None  
Recon ID : None  
Transferred From : None  
ARCPLC G//F Eligibility : Eligible

Farm Land Data

Farmland	Cropland	DCP Cropland	WBP	EWP	WRP	GRP	Sugarcane	Farm Status	Number Of Tracts
159.70	152.44	152.44	0.00	0.00	0.00	0.00	0.0	Active	1
State Conservation	Other Conservation	Effective DCP Cropland		Double Cropped		CRP	MPL	DCP Ag.Rel. Activity	SOD
0.00	0.00	152.44		0.00		0.00	0.00	0.00	0.00

Crop Election Choice

ARC Individual	ARC County	Price Loss Coverage
None	None	None

DCP Crop Data

Crop Name	Base Acres	CCC-505 CRP Reduction Acres	PLC Yield	HIP
-----------	------------	-----------------------------	-----------	-----

NOTES

--

Tract Number : 399

Description : SE4 29-28-5  
FSA Physical Location : KANSAS/KINGMAN  
ANSI Physical Location : KANSAS/KINGMAN  
BIA Unit Range Number :  
HEL Status : HEL field on tract.Conservation system being actively applied  
Wetland Status : Tract does not contain a wetland  
WL Violations : None  
Owners :  
Other Producers : None  
Recon ID : None

Tract Land Data

Farm Land	Cropland	DCP Cropland	WBP	EWP	WRP	GRP	Sugarcane
159.70	152.44	152.44	0.00	0.00	0.00	0.00	0.0
State Conservation	Other Conservation	Effective DCP Cropland	Double Cropped	CRP	MPL	DCP Ag. Rel Activity	SOD
0.00	0.00	152.44	0.00	0.00	0.00	0.00	0.00

KANSAS  
KINGMAN

Form: FSA-156EZ



United States Department of Agriculture  
Farm Service Agency

Abbreviated 156 Farm Record

FARM : 184

Prepared : 10/23/24 8:49 AM CST

Crop Year : 2025

DCP Crop Data

Tract 399 Continued ...

Crop Name	Base Acres	CCC-505 CRP Reduction Acres	PLC Yield
-----------	------------	-----------------------------	-----------

NOTES

*In accordance with Federal civil rights law and U.S. Department of Agriculture (USDA) civil rights regulations and policies, the USDA, its Agencies, offices, and employees, and institutions participating in or administering USDA programs are prohibited from discriminating based on race, color, national origin, religion, sex, gender identity (including gender expression), sexual orientation, disability, age, marital status, family/parental status, income derived from a public assistance program, political beliefs, or reprisal or retaliation for prior civil rights activity, in any program or activity conducted or funded by USDA (not all bases apply to all programs). Remedies and complaint filing deadlines vary by program or incident.*

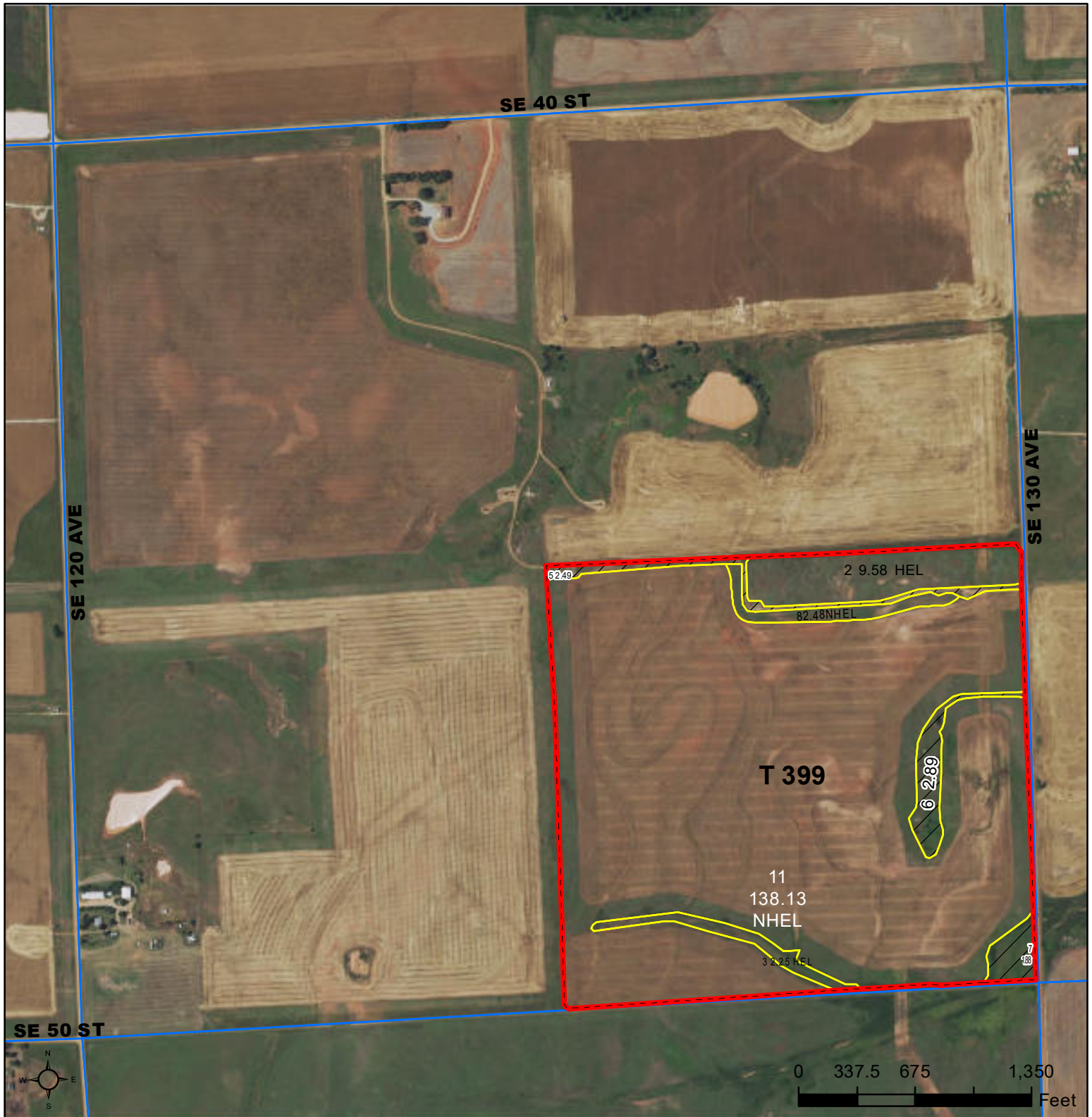
*Persons with disabilities who require alternative means of communication for program information (e.g., Braille, large print, audiotape, American Sign Language, etc.) should contact the responsible Agency or USDA's TARGET Center at (202) 720-2600 (voice and TTY) or contact USDA through the Federal Relay Service at (800) 877-8339. Additionally, program information may be made available in languages other than English.*

*To file a program discrimination complaint, complete the USDA Program Discrimination Complaint Form, AD-3027, found online at [http://www.ascr.usda.gov/complaint\\_filing\\_cust.html](http://www.ascr.usda.gov/complaint_filing_cust.html) and at any USDA office or write a letter addressed to USDA and provide in the letter all of the information requested in the form. To request a copy of the complaint form, call (866) 632-9992. Submit your completed form or letter to USDA by: (1) mail: U.S. Department of Agriculture Office of the Assistant Secretary for Civil Rights 1400 Independence Avenue, SW Washington, D.C. 20250-9410; (2) fax: (202) 690-7442; or (3) e-mail: [program.intake@usda.gov](mailto:program.intake@usda.gov). USDA is an equal opportunity provider, employer, and lender.*



United States  
Department of  
Agriculture

## Kingman County, Kansas



**Common Land Unit**

- Tract Boundary
- PLSS

- Non-Cropland
- Cropland

### Wetland Determination Identifiers

- Restricted Use
- Limited Restrictions
- Exempt from Conservation Compliance Provisions

### Unless noted on field:

- |                             |                                 |
|-----------------------------|---------------------------------|
| 1/ All Wheat HRW, NI, GR    | 6/ Grass NAG, NI, LS            |
| 2/ All Sorghum GRS, NI, GR  | 7/ Grass SMO, NI, FG            |
| 3/ All Corn YEL, NI, GR     | 8/ Grass SMO, NI, LS            |
| 4/ All Soybeans COM, NI, GR | 9/ Grass, NAG, NI, GZ           |
| 5/ Grass NAG, NI, FG        | 10/ Sorghum Forage, CAN, NI, FG |

**2024 Program Year**

Map Created October 25, 2023

**Farm 184**  
**Tract 399**

**Tract Cropland Total: 152.44 acres**

**29-28-5**

Displayed over 2021 NAIP

United States Department of Agriculture (USDA) Farm Service Agency (FSA) maps are for FSA Program administration only. This map does not represent a legal survey or reflect actual ownership; rather it depicts the information provided directly from the producer and/or National Agricultural Imagery Program (NAIP) imagery. The producer accepts the data 'as is' and assumes all risks associated with its use. USDA-FSA assumes no responsibility for actual or consequential damage incurred as a result of any user's reliance on this data outside FSA Programs. Wetland identifiers do not represent the size, shape, or specific determination of the area. Refer to your original determination (CPA-026 and attached maps) for exact boundaries and determinations or contact USDA Natural Resources Conservation Service (NRCS).



Operator Name and Address

CLINT F FOLEY  
2696 SE 140 AVE  
CHENEY, KS 67025-8439

Original: KJT  
Revision: KJT  
Cropland: 152.44  
Farmland: 159.70

Tract Number	CLU/Field	Crop/Commodity	Var/Type	Int Use	Irr. Pr.	Org Stat	Nat. Sod	C/C Stat	Rpt Unit	Rpt Qty	Det Qty	Crop Land	Field ID	Planting Date	Planting Period	End Date
399	2	GRASS	NAG	LS	N	C	N	I	A	9.58		Yes			01	CC
Producer					Share 100.00		FSA Physical Location Kingman, Kansas					NAP Unit 2983		Signature Date 11/17/2016		
3		GRASS	SMO	LS	N	C	N	I	A	2.25		Yes		03/01/2011	01	CC
Producer					Share 100.00		FSA Physical Location Kingman, Kansas					NAP Unit 2983		Signature Date 11/17/2016		
8		GRASS	SMO	LS	N	C	N	I	A	2.48		Yes		04/05/2011	01	CC
Producer					Share 100.00		FSA Physical Location Kingman, Kansas					NAP Unit 2983		Signature Date 11/17/2016		
11		WHEAT	HRW	GR	N	C	N	I	A	138.13		Yes		10/16/2023	01	
Producer CLINT F FOLEY					Share 100.00		FSA Physical Location Kingman, Kansas					NAP Unit 2984		Signature Date 11/22/2023		

Tract 399 Summary

PP	Cr/Co	Var/Type	Int Use	Irr Pr	Rpt Unit	Rpt Qty	PP	Cr/Co	Var/Type	Int Use	Irr Pr	Rpt Unit	Rpt Qty	PP	Cr/Co	Var/Type	Int Use	Irr Pr	Rpt Unit	Rpt Qty			
01	GRASS	NAG	LS	N	A	9.58	01	WHEAT	HRW	GR	N	A	138.13	01	GRASS	SMO	LS	N	A	4.73			
Photo Number/Legal Description: SE4 29-28-5																							
Cropland: 152.44						Reported on Cropland: 152.44						Difference: 0.00						Reported on Non-Cropland: 0.00					

NOTE: The following statement is made in accordance with the Privacy Act of 1974 (5 USC 552a – as amended). The authority for requesting the information identified on this form is 7 CFR Part 718, the Farm Security and Rural Investment Act of 2002 (Pub L. 107-171), and the Agricultural Act of 2014 (Pub. L. 113-79). The information will be used to collect producer certification of the report of acreage of crops/commodities and land use data which is needed in order to determine producer eligibility to participate in and receive benefits under FSA programs. The information collected on the form may be disclosed to other Federal, State, Local government agencies, Tribal agencies, and nongovernmental entities that have been authorized access to the information by statute or regulation and/or as described in applicable Routine Uses identified in the System of Records Notice for USDA/FSA-2, Farm Records File (Automated) and USDA/FSA-14, Applicant/Borrower. Providing the requested information is voluntary. However, failure to furnish the requested information may result in a denial of the producer's request to participate in and receive benefits under FSA programs. According to the Paperwork Reduction Act of 1995, an agency may not conduct or sponsor, and a person is not required to respond to, a collection of information unless it displays a valid OMB control number. The valid OMB control number for this information collection is 0560-0175. The time required to complete this information collection is estimated to average 30 minutes per response, including the time for reviewing instructions, searching existing data sources, gathering and maintaining the data needed, and completing and reviewing the collection of information. The provisions of criminal and civil fraud, privacy, and other statutes may be applicable to the information provided. RETURN THIS COMPLETED FORM TO YOUR COUNTY FSA OFFICE.

CLINT F FOLEY															
		Crop/ Commodity	Variety/ Type	Share						Crop/ Commodity	Variety/ Type	Share			
		WHEAT	HRW	100.00						GRASS	SMO	100.00			
		GRASS	NAG	100.00											
PP	Crop/ Commodity	Variety/ Type	Intended Use	Irrigation Practice	Reporting Unit	Reported Quantity	Determined Quantity	PP	Crop/ Commodity	Variety/ Type	Intended Use	Irrigation Practice	Reporting Unit	Reported Quantity	Determined Quantity
01	GRASS	SMO	LS	N	A	4.73		01	WHEAT	HRW	GR	N	A	138.13	
01	GRASS	NAG	LS	N	A	9.58									

CERTIFICATION: I certify to the best of my knowledge and belief that the acreage of crops/commodities and land uses listed herein are true and correct and that all required crops/commodities and land uses have been reported for the farm as applicable. Absent any different or contrary prior subsequent certification filed by any producer for any crop for which NAP coverage has been purchased, I certify that the applicable crop, type, practice, and intended use is not planted if it is not included on the Report of Commodities for this crop year. The signing of this form gives FSA representatives authorization to enter and inspect crops/commodities and land uses on the above identified land. A signature date (the date the producer signs the FSA-578) will also be captured.

Producer's Signature (By)	Title/Relationship of Individual Signing in the Representative Capacity	Date

In accordance with Federal civil rights law and U.S. Department of Agriculture (USDA) civil rights regulations and policies, the USDA, its Agencies, offices, and employees, and institutions participating in or administering USDA programs are prohibited from discriminating based on race, color, national origin, religion, sex, gender identity (including gender expression), sexual orientation, disability, age, marital status, family/parental status, income derived from a public assistance program, political beliefs, or reprisal or retaliation for prior civil rights activity, in any program or activity conducted or funded by USDA (not all bases apply to all programs). Remedies and complaint filing deadlines vary by program or incident. Persons with disabilities who require alternative means of communication for program information (e.g., Braille, large print, audiotape, American Sign Language, etc.) should contact the responsible Agency or USDA's TARGET Center at (202) 720-2600 (voice and TTY) or contact USDA through the Federal Relay Service at (800) 877-8339. Additionally, program information may be made available in languages other than English. To file a program discrimination complaint, complete the USDA Program Discrimination Complaint Form, AD-3027, found online at [http://www.ascr.usda.gov/complaint\\_filing\\_cust.html](http://www.ascr.usda.gov/complaint_filing_cust.html) and at any USDA office or write a letter addressed to USDA and provide in the letter all of the information requested in the form. To request a copy of the complaint form, call (866) 632-9992. Submit your completed form or letter to USDA by: (1) mail: U.S. Department of Agriculture Office of the Assistant Secretary for Civil Rights 1400 Independence Avenue, SW Washington, D.C. 20250-9410; (2) fax: (202) 690-7442; or (3) email: [program.intake@usda.gov](mailto:program.intake@usda.gov). USDA is an equal opportunity provider, employer, and lender.

**161.4 +/- Acres on SE 130 Ave, Murdock, KS 67111-Zoning A-1 General Agricultural**



9/18/2024

161.4 +/- Acres on SE 130 Ave, Murdock, KS 67111

FEMA – No Digital Data Available





**161.4 +/- Acres on SE 130 Ave, Murdock, KS 67111**



**9/18/2024**

## Real Estate Brokerage Relationships

Kansas law requires real estate licensees to provide the following information about brokerage relationships to prospective sellers and buyers at the first practical opportunity. This brochure is provided for informational purposes and does not create an obligation to use the broker's services.

**Types of Brokerage Relationships:** A real estate licensee may work with a buyer or seller as a seller's agent, buyer's agent or transaction broker. The disclosure of the brokerage relationship between all licensees involved and the seller and buyer must be included in any contract for sale and in any lot reservation agreement.

**Seller's Agent:** The seller's agent represents the seller only, so the buyer may be either unrepresented or represented by another agent. In order to function as a seller's agent, the broker must enter into a written agreement to represent the seller. Under a seller agency agreement, all licensees at the brokerage are seller's agents unless a designated agent is named in the agreement. If a designated agent is named, only the designated agent has the duties of a seller's agent and the supervising broker of the designated agent functions as a transaction broker.

**Buyer's Agent:** The buyer's agent represents the buyer only, so the seller may be either unrepresented or represented by another agent. In order to function as a buyer's agent, the broker must enter into a written agreement to represent the buyer. Under a buyer agency agreement, all licensees at the brokerage are buyer's agents unless a designated agent is named in the agreement. If a designated agent is named, only the designated agent has the duties of a buyer's agent and the supervising broker of the designated agent functions as a transaction broker.

**A Transaction Broker** is not an agent for either party and does not advocate the interests of either party. A transaction brokerage agreement can be written or verbal.

**Duties and Obligations:** Agents and transaction brokers have duties and obligations under K.S.A. 58-30,106, 58-30,107, and 58-30,113, and amendments thereto. A summary of those duties are:

**An Agent**, either seller's agent or buyer's agent, is responsible for performing the following duties:

- promoting the interests of the client with the utmost good faith, loyalty, and fidelity
- protecting the clients confidences, unless disclosure is required
- presenting all offers in a timely manner
- advising the client to obtain expert advice
- accounting for all money and property received
- disclosing to the client all adverse material facts actually known by the agent
- disclosing to the other party all adverse material facts actually known by the agent

**The transaction broker** is responsible for performing the following duties:

- protecting the confidences of both parties
- exercising reasonable skill and care
- presenting all offers in a timely manner
- advising the parties regarding the transaction
- suggesting that the parties obtain expert advice
- accounting for all money and property received
- keeping the parties fully informed
- assisting the parties in closing the transaction
- disclosing to the parties all adverse material facts actually known by the transaction broker

**Agents and Transaction Brokers** have no duty to:

- conduct an independent inspection of the property for the benefit of any party
- conduct an independent investigation of the buyer's financial condition
- independently verify the accuracy or completeness of statements made by the seller, buyer, or any qualified third party.

**General Information:** Each real estate office has a supervising broker or branch broker who is responsible for the office and the affiliated licensees assigned to the office. Below are the names of the licensee providing this brochure, the supervising/branch broker, and the real estate company.

---

Licensee

---

Real estate company name approved by the commission

---

Supervising/branch broker

---

Buyer/Seller Acknowledgement (not required)



# GUIDE TO AUCTION COSTS

## WHAT TO EXPECT

### THE SELLER CAN EXPECT TO PAY

- Half of the Owner's Title Insurance
- Half of the Title Company's Closing Fee
- Real Estate Commission *(If Applicable)*
- Advertising Costs
- Payoff of All Loans, Including Accrued Interest, Statement Fees, Reconveyance Fees and Any Prepayment Penalties
- Any Judgments, Tax Liens, etc. Against the Seller
- Recording Charges Required to Convey Clear Title
- Any Unpaid Taxes and Tax Proration for the Current Year
- Any Unpaid Homeowner's Association Dues
- Rent Deposits and Prorated Rents *(If Applicable)*

### THE BUYER CAN GENERALLY EXPECT TO PAY

- Half of the Owner's Title Insurance
- Half of the Title Company's Closing Fee
- 10% Buyer's Premium *(If Applicable)*
- Document Preparation *(If Applicable)*
- Notary Fees *(If Applicable)*
- Recording Charges for All Documents in Buyer's Name
- Homeowner's Association Transfer / Setup Fee *(If Applicable)*
- All New Loan Charges *(If Obtaining Financing)*
- Lender's Title Policy Premiums *(If Obtaining Financing)*
- Homeowner's Insurance Premium for First Year
- All Prepaid Deposits for Taxes, Insurance, PMI, etc. *(If Applicable)*

