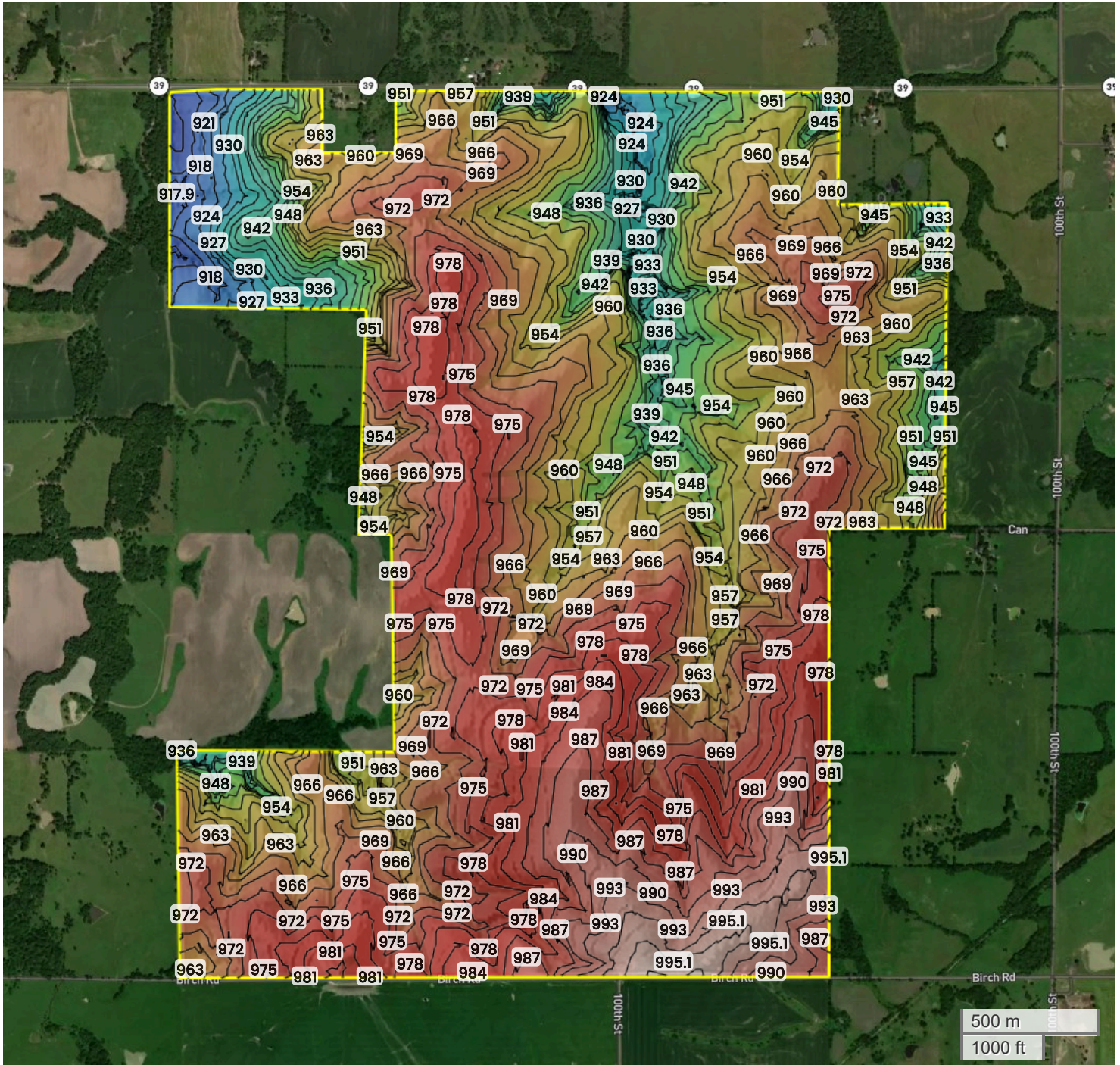




BOURBON COUNTY, KANSAS (1692.15 AC TOTAL, 1312.75 AC TILLABLE)

## TOPOGRAPHY



918 ft

995 ft



Center: 37.703625, -94.945102

12-27S-22E

Walnut Township  
Bourbon County, KS

Source: USGS 10m DEM

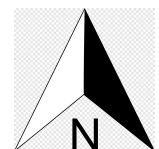
Interval(ft): 3

Max: 995.1 ft

Min: 917.9 ft

Range: 77.2 ft

Average: 956.5 ft



FarmWorth, LLC makes no representations or warranties, express or implied, as to the accuracy of any information, data, numerical values, boundaries, or any other information generated through the use of FarmWorth.com. User is solely responsible for independently investigating and determining all information provided through FarmWorth.com prior to use and waives any and all claims against FarmWorth, LLC for any inaccuracies or inconsistencies in the information and/or data.