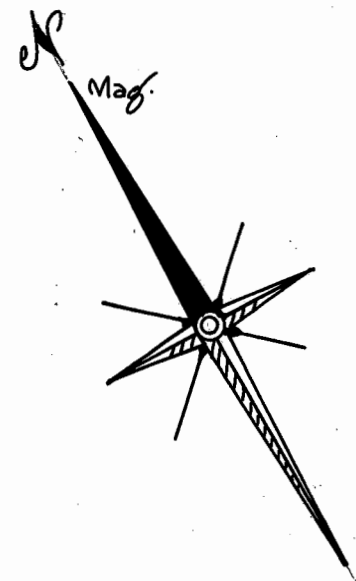


STATE OF MAINE
SOMERSET, ss. REGISTRY OF DEEDS.
Received MAY 23, 1979,
at 10 h. 16 m. 2 M., and records
in Plan File A-72, Page 026.

Attest:
Ernestine S. Beaulieu
Deputy REGISTER



- LEGEND -
- ⊙ IRON PIN FOUND
 - IRON PIN NEW
 - GRANITE MONUMENT FOUND
 - x-x- BARBED WIRE
 - STONE WALL

• NOTE •
THIS SURVEY WAS DONE WITH A HAND
HELD COMPASS. THE LINES WERE
MEASURED WITH A STEEL TAPE. ACCURACY
OF THIS WORK IS WITHIN THE RECOGNIZED
LIMITS OF THIS TYPE OF SURVEY.



HERMAN R. REDLEVSKE
902 - 264

MAP OF LAND OF
WILLIAM T. YATES & LAWRENCE C. BARRON
MERCER • SOMERSET COUNTY • MAINE

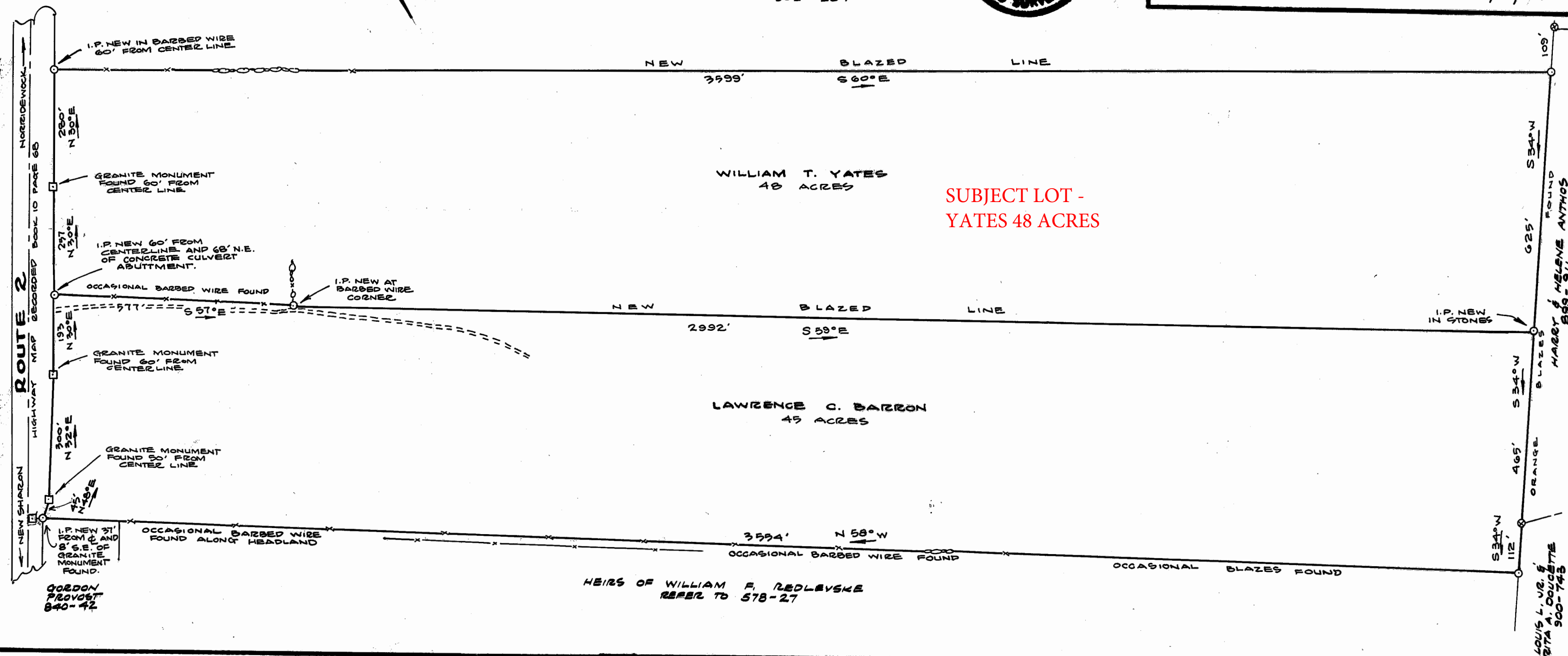
BY
Acme Engineering & Design Inc.
CHESTERVILLE, MAINE

TOTAL AREA: 93 ACRES
SCALE 1" = 200'

0 100 200 400

APPROVED: *Peter B. Cook*

DATE: 5/7/79



79-026