

# RAYMOND RANCH

Madera County, California

370.83± Acres

**\$850,000**  
(\$2,292/Acre)

**PRICE REDUCED**



- Large Pond and Willow Creek
- Graded Roads For Easy Access
- Close Proximity to Raymond



**PEARSON  
REALTY**  
AGRICULTURAL PROPERTIES  
*A Tradition in Trust Since 1919*

## Offices Serving The Central Valley

### FRESNO

7480 N. Palm Ave, Ste 101  
Fresno, CA 93711  
559.432.6200

### VISALIA

3447 S. Demaree Street  
Visalia, CA 93277  
559.732.7300

### BAKERSFIELD

4900 California Ave., #210B  
Bakersfield, CA 93309  
661.334.2777

[www.pearsonrealty.com](http://www.pearsonrealty.com)

*Exclusively Presented by:*



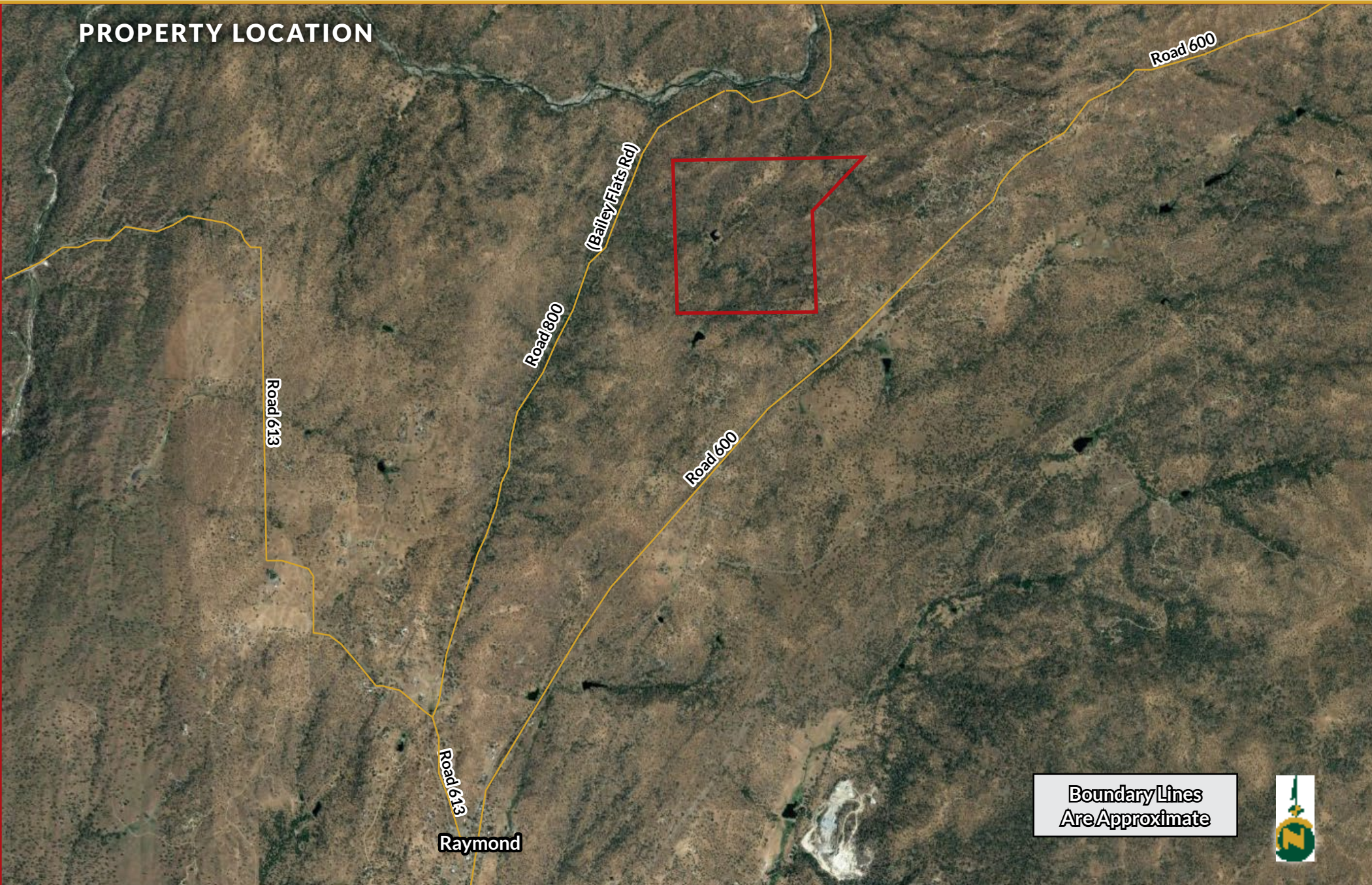


# RAYMOND RANCH

370.83± Acres  
Madera County, CA



## PROPERTY LOCATION





## PROPERTY INFORMATION

### DESCRIPTION

This gorgeous ranch is located in the foothills of Madera County just north of the town of Raymond. It boasts a secluded setting with plenty of wildlife roaming due to Willow Creek and easy access throughout via graded roads. This ranch has historically been operated as a cattle ranch in addition to the outdoor activities it offers, such as horseback riding, UTV/ATV riding, fishing, hunting, and many others.

### LOCATION

The ranch has (2) legal access points. One entrance is located on the east side of Road 800 (Bailey Flats Road); 3 Miles North of the Raymond General Store, and the other entrance is located off of Road 600 just 3.5 miles north of the store.

### LEGAL

Madera County APN: 053-121-007

### ZONING

AE-20, Agricultural Exclusive - 20 acres.  
The property is located within the Williamson Act.

### WATER

Seasonal creeks and pond.

### BUILDINGS

None.

### PRICE/TERMS

\$850,000 all cash at the close of escrow



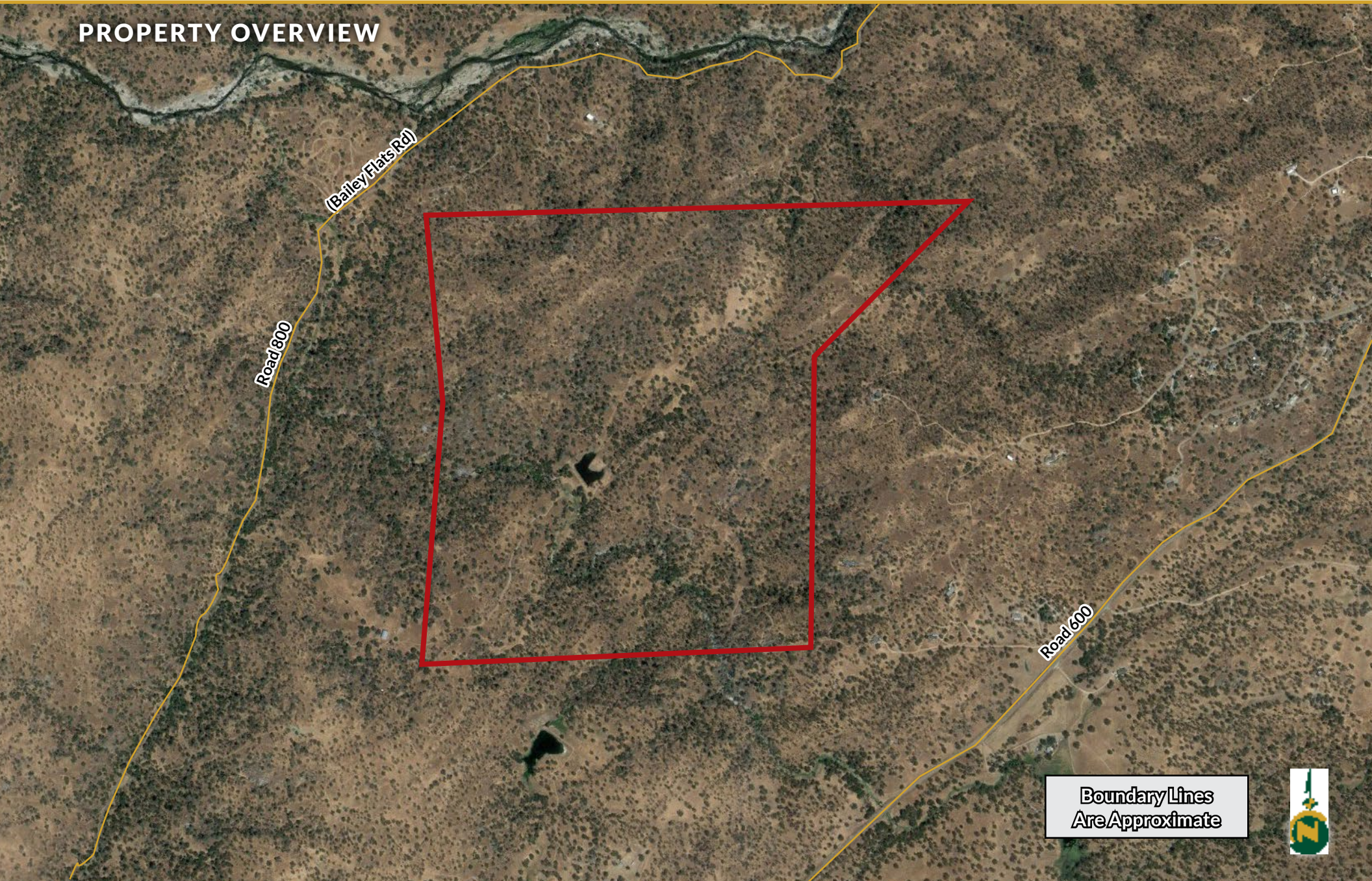


# RAYMOND RANCH

370.83± Acres  
Madera County, CA

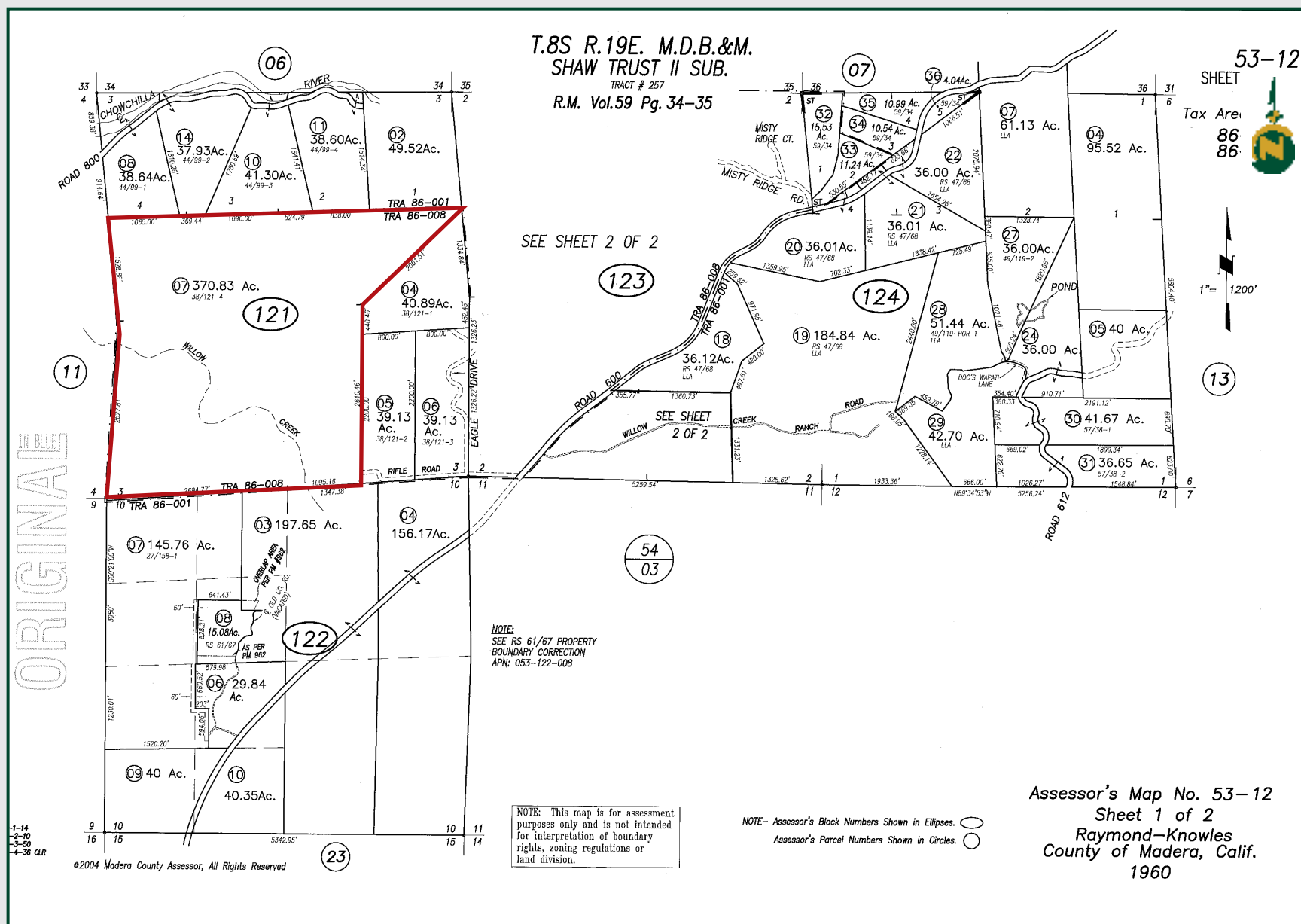


## PROPERTY OVERVIEW





## PARCEL MAP





# RAYMOND RANCH

370.83± Acres  
Madera County, CA



## PROPERTY PHOTOS





# RAYMOND RANCH

370.83± Acres  
Madera County, CA



## PROPERTY PHOTOS





# RAYMOND RANCH

370.83± Acres  
Madera County, CA



## Offices Serving The Central Valley

### FRESNO

7480 N. Palm Ave, Ste 101  
Fresno, CA 93711  
559.432.6200

### VISALIA

3447 S. Demaree Street  
Visalia, CA 93277  
559.732.7300

### BAKERSFIELD

4900 California Ave., #210B  
Bakersfield, CA 93309  
661.334.2777



**Download Our  
Mobile App!**

<http://pearsonrealty.com/mobileapp>



Download on the  
**App Store**



GET IT ON  
**Google Play**

**Water Disclosure:** The Sustainable Groundwater Management Act (SGMA) was passed in 2014, requiring groundwater basins to be sustainable by 2040. SGMA requires a Groundwater Sustainability Plan (GSP) by 2020. SGMA may limit the amount of well water that may be pumped from underground aquifers. Buyers and tenants to a real estate transaction should consult with their own water attorney; hydrologist; geologist; civil engineer; or other

environmental professional. Additional information is available at: California Department of Water Resources Sustainable Groundwater Management Act Portal - <https://sgma.water.ca.gov/portal/> Telephone Number: (916) 653-5791

**Policy on cooperation:** All real estate licensees are invited to offer this property to prospective buyers. Do not offer to other agents without prior approval.