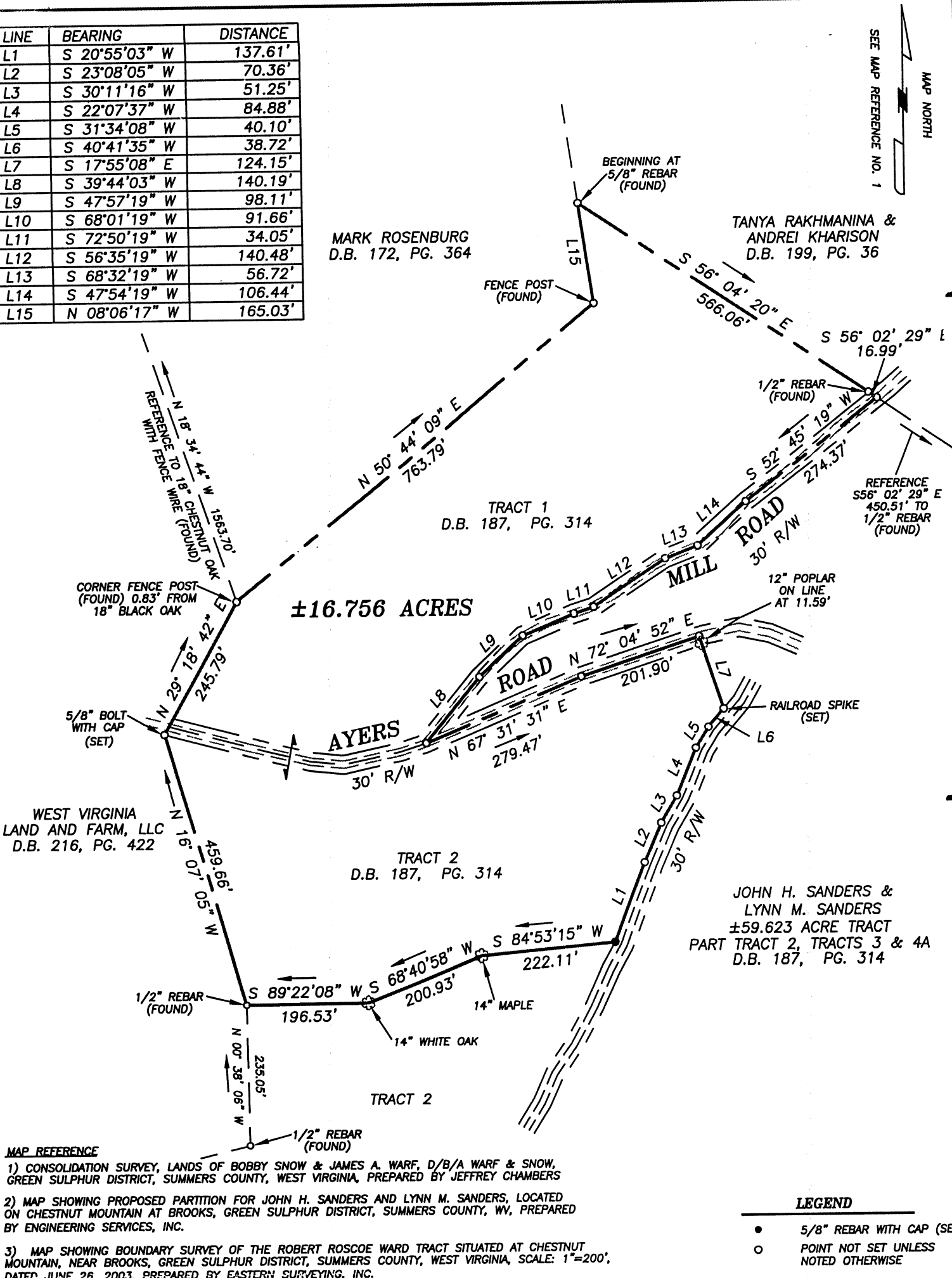


LINE	BEARING	DISTANCE
L1	S 20°55'03" W	137.61'
L2	S 23°08'05" W	70.36'
L3	S 30°11'16" W	51.25'
L4	S 22°07'37" W	84.88'
L5	S 31°34'08" W	40.10'
L6	S 40°41'35" W	38.72'
L7	S 17°55'08" E	124.15'
L8	S 39°44'03" W	140.19'
L9	S 47°57'19" W	98.11'
L10	S 68°01'19" W	91.66'
L11	S 72°50'19" W	34.05'
L12	S 56°35'19" W	140.48'
L13	S 68°32'19" W	56.72'
L14	S 47°54'19" W	106.44'
L15	N 08°06'17" W	165.03'



**MAP REFERENCE**

1) CONSOLIDATION SURVEY, LANDS OF BOBBY SNOW & JAMES A. WARF, D/B/A WARF & SNOW, GREEN SULPHUR DISTRICT, SUMMERS COUNTY, WEST VIRGINIA, PREPARED BY JEFFREY CHAMBERS

2) MAP SHOWING PROPOSED PARTITION FOR JOHN H. SANDERS AND LYNN M. SANDERS, LOCATED ON CHESTNUT MOUNTAIN AT BROOKS, GREEN SULPHUR DISTRICT, SUMMERS COUNTY, WV, PREPARED BY ENGINEERING SERVICES, INC.

3) MAP SHOWING BOUNDARY SURVEY OF THE ROBERT ROSCOE WARD TRACT SITUATED AT CHESTNUT MOUNTAIN, NEAR BROOKS, GREEN SULPHUR DISTRICT, SUMMERS COUNTY, WEST VIRGINIA, SCALE: 1"=200', DATED JUNE 26, 2003, PREPARED BY EASTERN SURVEYING, INC.

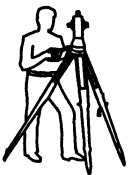
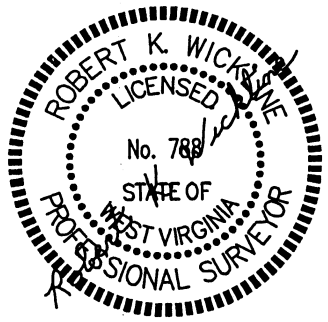
LEGEND	
●	5/8" REBAR WITH CAP (SET)
○	POINT NOT SET UNLESS NOTED OTHERWISE

**PLAT SHOWING**  
**BOUNDARY SURVEY OF A ±16.756 ACRE TRACT**  
**BEING TRACT 1 AND PART OF TRACT 2**  
**OWNED BY JOHN H. SANDERS & LYNN M. SANDERS**

SITUATED ON CHESTNUT MOUNTAIN AT BROOKS  
GREEN SULPHUR DISTRICT, SUMMERS COUNTY  
WEST VIRGINIA

SCALE: 1" = 200'

JOB #	102-04-6
F.B./PAGE	77
DATE	JULY 6, 2005
DRAWN BY	LM



PREPARED BY:  
**EASTERN SURVEYING, INC.**  
P.O. BOX 1152, 431 S. FAYETTE ST.  
BECKLEY, WEST VIRGINIA  
PHONE: (304) 255-0256

REFER TO:  
TAX MAP 27,  
P/O PARCEL 19