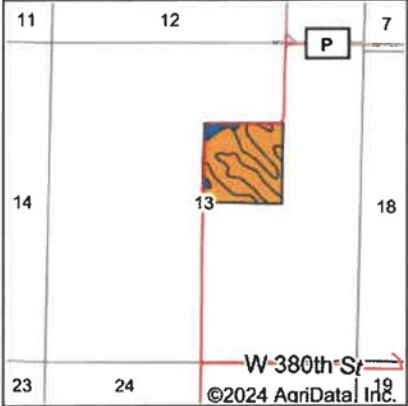
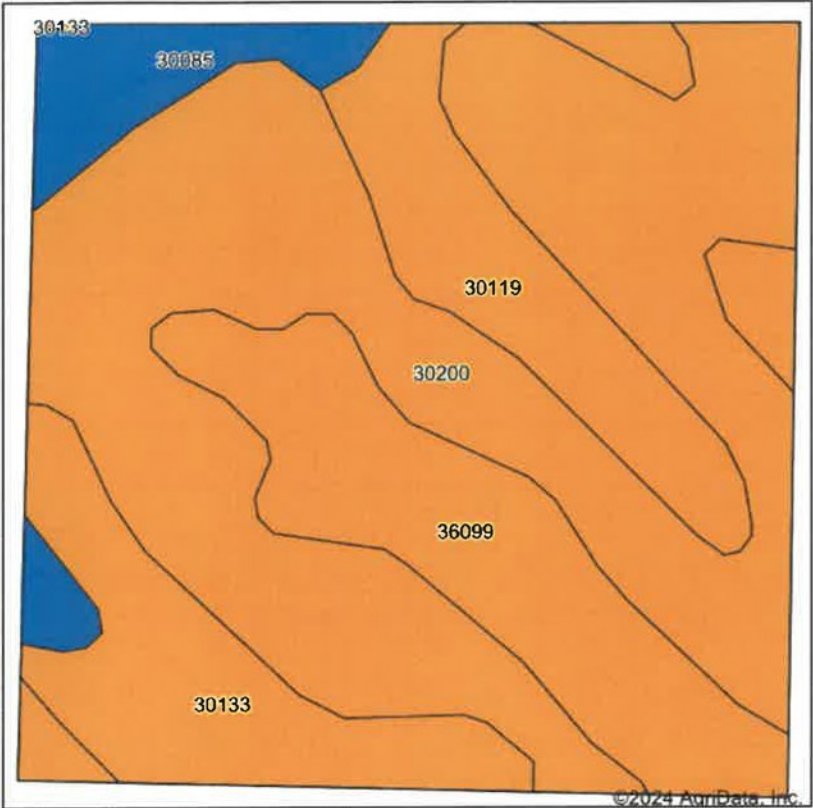


Soils Map



State: **Missouri**
County: **Harrison**
Location: **13-62N-29W**
Township: **Butler**
Acres: **40.21**
Date: **11/3/2024**



Soils data provided by USDA and NRCS.

Area Symbol: MO081, Soil Area Version: 27									
Code	Soil Description	Acres	Percent of field	Non-Irr Class Legend	Non-Irr Class *c	Common bermudagrass Tons	Orchardgrass red clover Tons	Tall fescue Tons	Warm season grasses Tons
30200	Shelby loam, 9 to 14 percent slopes	21.25	52.8%		IIIe				
36099	Zook-Colo silty clay loams, 1 to 3 percent slopes, frequently flooded	7.11	17.7%		IIIw	8	7	8	9
30119	Lagonda silty clay loam, 2 to 5 percent slopes, eroded	4.75	11.8%		IIIe				
30133	Lamoni clay loam, 5 to 9 percent slopes, eroded	4.74	11.8%		IIIe				
30085	Grundy silt loam, 2 to 5 percent slopes	2.36	5.9%		Ile				
Weighted Average					2.94	1.4	1.2	1.4	1.6

*c: Using Capabilities Class Dominant Condition Aggregation Method