



Gamal Jadue
Zalaquett

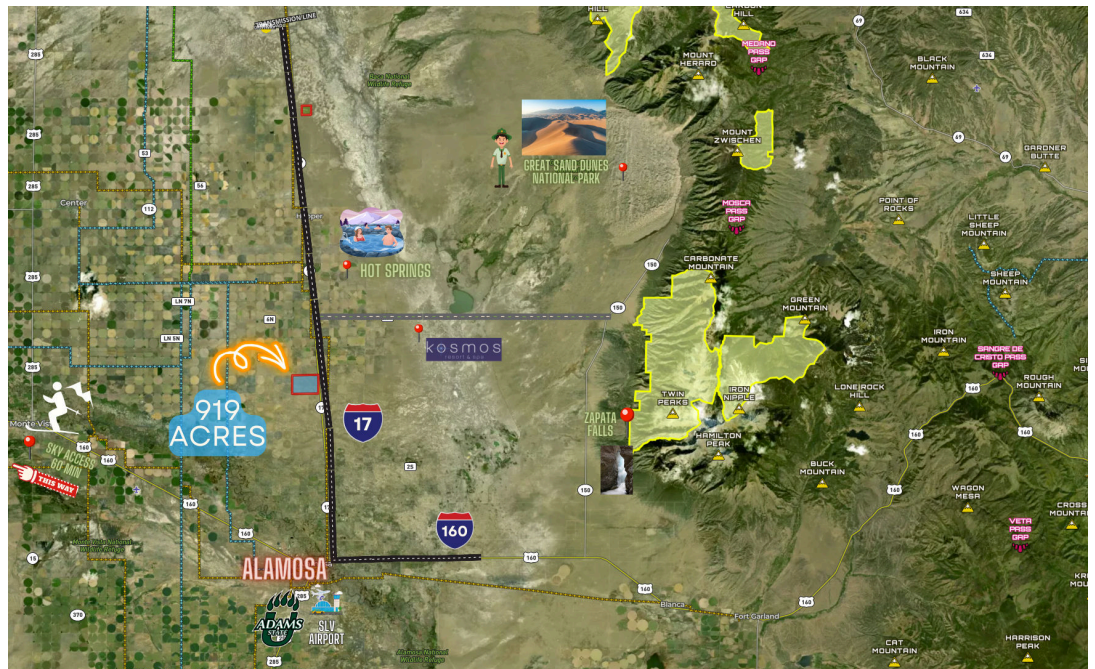
Managing
Director



Tract 8

Alamosa County
Colorado

35 Acres



Own A Piece Of Colorado

610 State Ave
Alamosa, Colorado 81101
3039607646



Overview



Alamosa, CO • Township: Mosca-Hooper • Location: 21-39N-10E

35.30 acres, 1 selection



Overview 35.30 acres, 1 selection



Alamosa, CO • Township: Mosca-Hooper • Location: 21-39N-10E Type: Custom Boundary



Acres
35.30

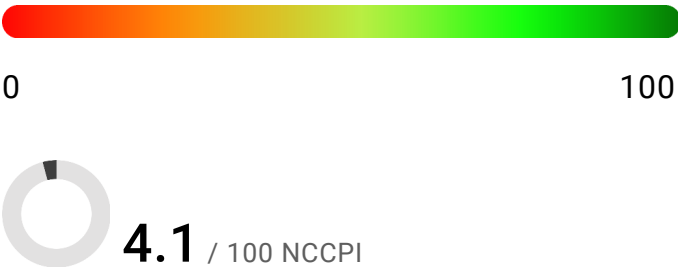
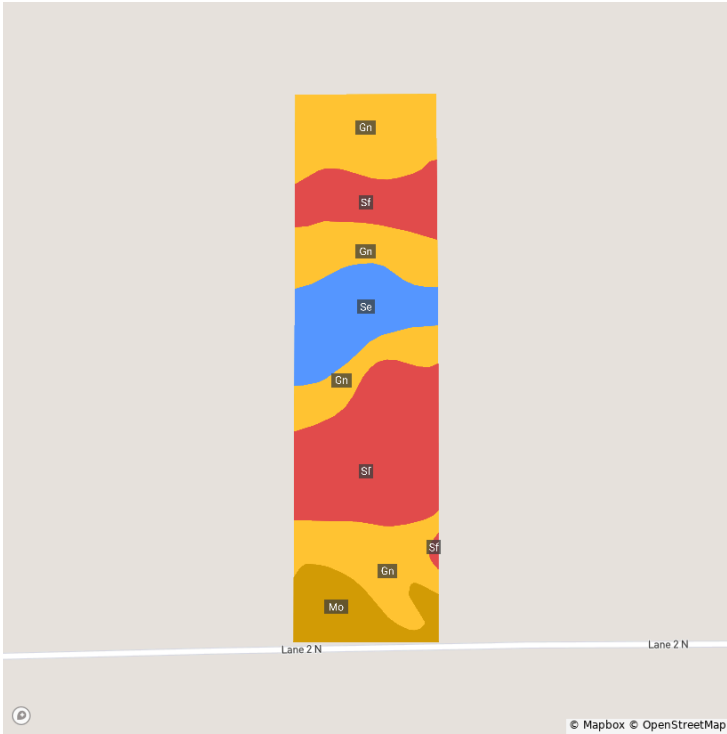
Lat. Long.
37.6089, -105.8772

Soils



Alamosa, CO • Township: Mosca-Hooper • Location: 21-39N-10E

35.30 acres, 1 selection

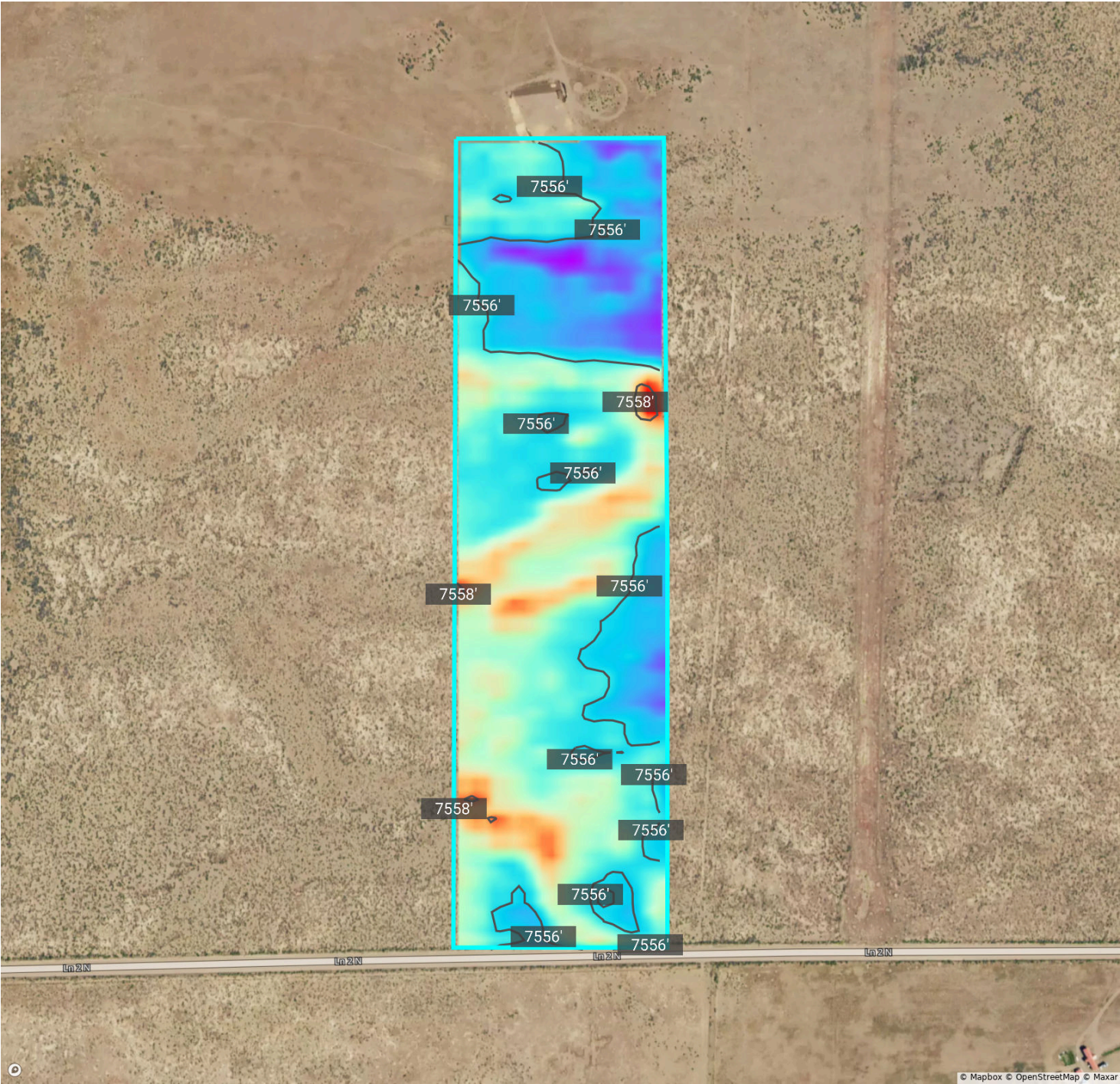


Code	Soil Description	Acres	% of Field	Non-IRR Class	IRR Class	NCCPI
Gn	Gunbarrel loamy sand, 0 to 1 percent slopes	15.0	42.5%	7w	4w	4.5
Sf	San Luis sandy loam, drained	12.1	34.2%	6w	3w	3.9
Se	San Luis sandy loam, 0 to 1 percent slopes	4.8	13.7%	6w	3w	3.7
Mo	Mosca loamy sand	3.4	9.5%	7s	3s	3.4

Elevation

Alamosa, CO • Township: Mosca-Hooper • Location: 21-39N-10E

35.30 acres, 1 selection



Source: USGS 3 Meter Dem Interval: 1.0 ft Range: 2.4 ft Min: 7555.8 Max: 7558.2

Crop History



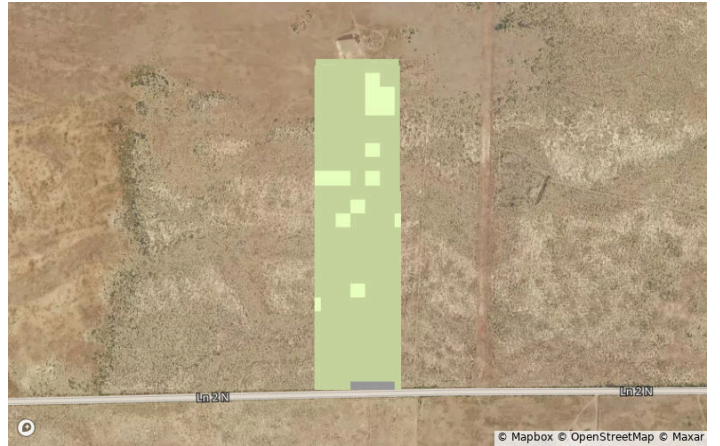
Alamosa, CO • Township: Mosca-Hooper • Location: 21-39N-10E

35.30 acres, 1 selection

2023



2022



2021



2020



2019



2018



Crop History








Alamosa, CO • Township: Mosca-Hooper • Location: 21-39N-10E

35.30 acres, 1 selection

All Selections



Crop	2023	2022	2021	2020	2019	2018
 Shrubland	91.1%	88.0%	89.2%	88.0%	88.0%	97.5%
 Grassland/Pasture	6.3%	9.5%	9.5%	9.5%	9.5%	0.0%
 Developed/Open Space	1.9%	1.9%	1.3%	2.5%	2.5%	1.9%
 Other	0.6%	0.6%	0.0%	0.0%	0.0%	0.0%
 Fallow/Idle Cropland	0.0%	0.0%	0.0%	0.0%	0.0%	0.6%

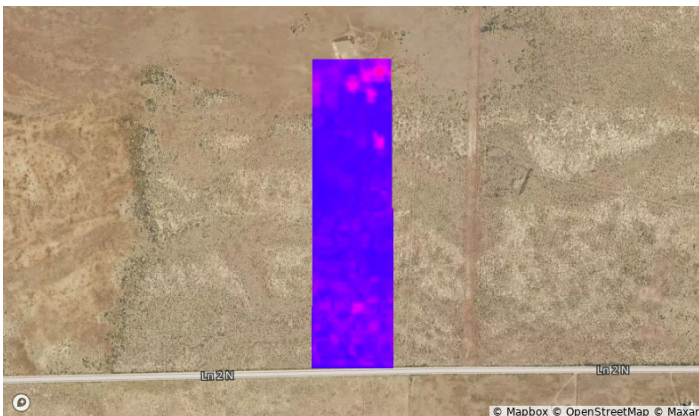
Vegetation Index (NDVI)



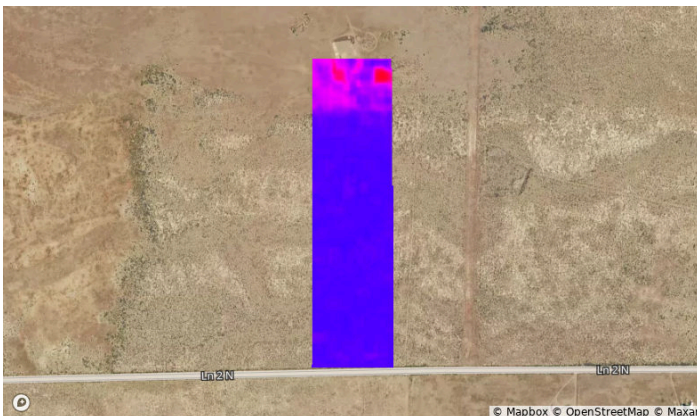
Alamosa, CO • Township: Mosca-Hooper • Location: 21-39N-10E

35.30 acres, 1 selection

2023



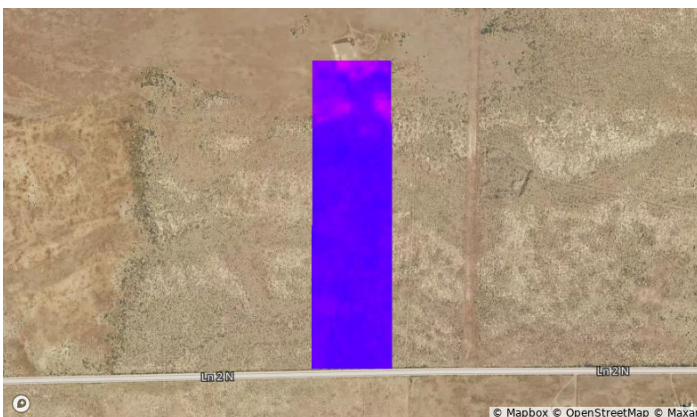
2022



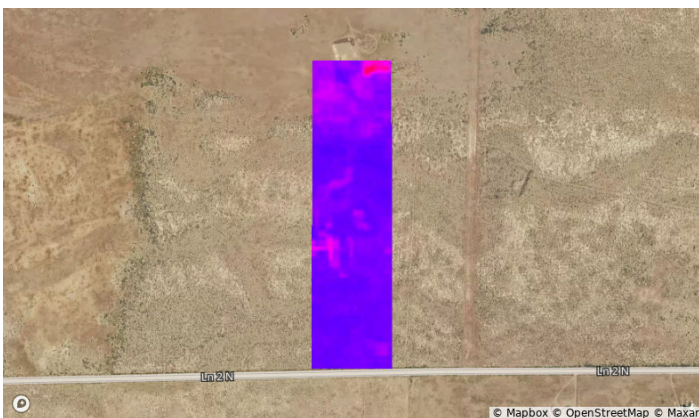
2021



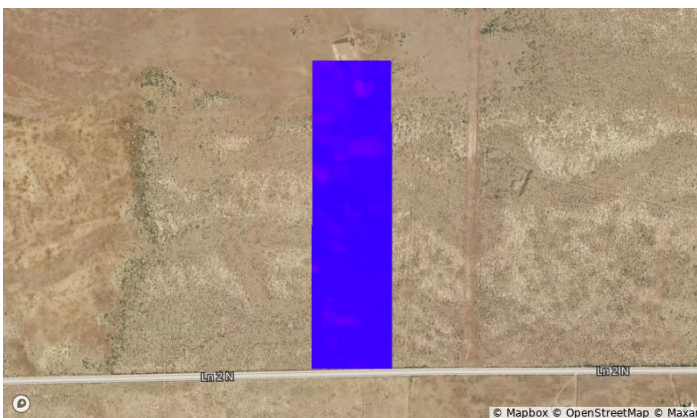
2020



2019



2018



Vegetation Index (NDVI)



Alamosa, CO • Township: Mosca-Hooper • Location: 21-39N-10E

35.30 acres, 1 selection

Year	2023	2022	2021	2020	2019	2018
Standard Deviation	5	8	7	3	5	2
Mean	19	18	24	17	22	12
Min	12	12	17	12	16	9
Max	45	56	59	35	51	21






Flood (FEMA Report)



Alamosa, CO • Township: Mosca-Hooper • Location: 21-39N-10E

35.30 acres, 1 selection



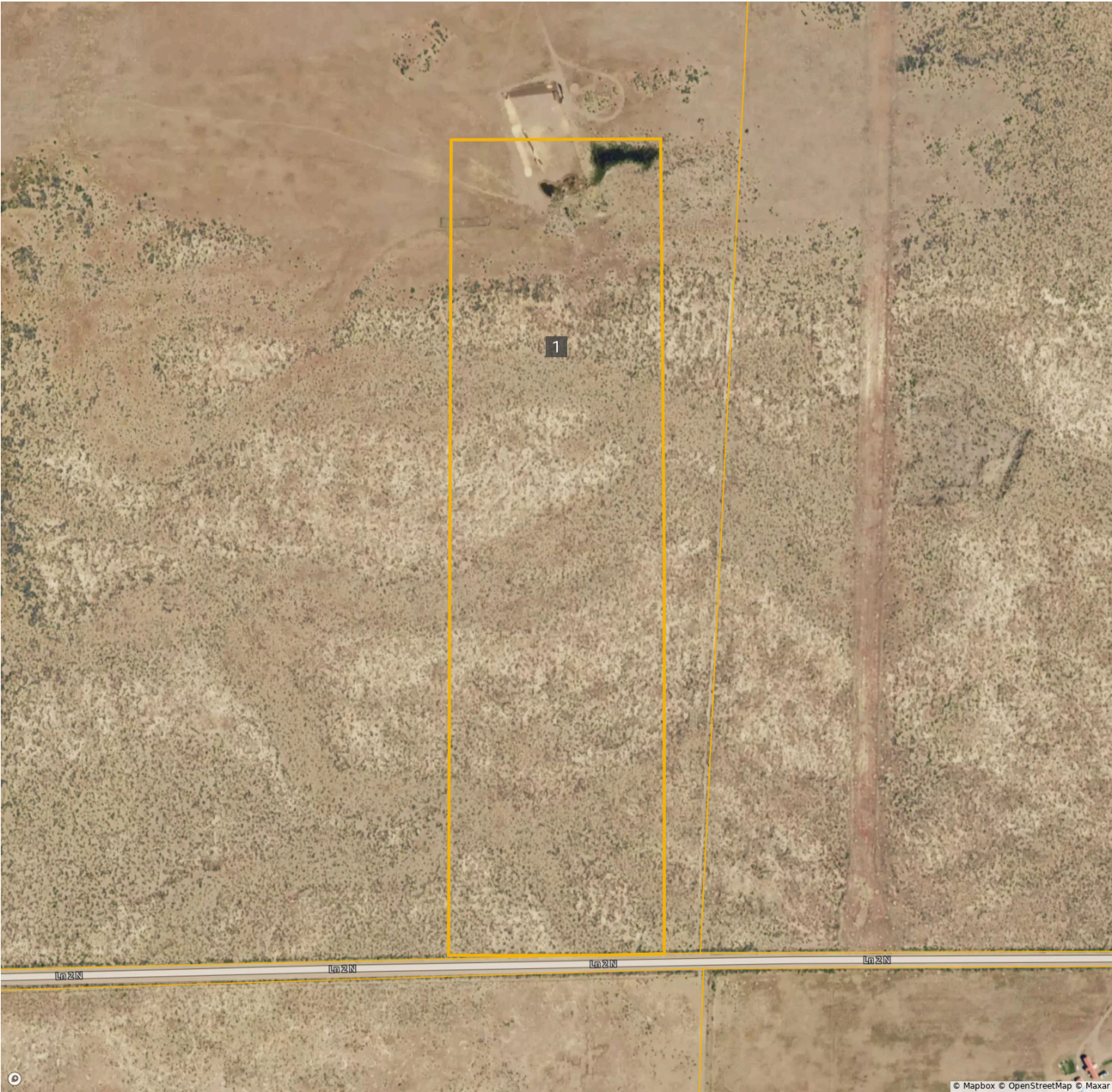
Flood Hazard Zone		% of Selection	Acres
	100 Year Flood Zone (1% annual chance of flooding)	0.0%	0.0
	500 Year Flood Zone (0.2% annual chance of flooding)	0.0%	0.0
	Regulatory Floodway	0.0%	0.0
	No Flood Hazard Zone	100.0%	35.3
Wetlands		% of Selection	Acres
	Assorted Wetlands	0.3%	0.1

FSA Overview



Alamosa, CO • Township: Mosca-Hooper • Location: 21-39N-10E

35.30 acres, 1 selection



CLU	Acres
1	35.29

Historical Imagery



Alamosa, CO • Township: Mosca-Hooper • Location: 21-39N-10E

35.30 acres, 1 selection

2023



2021



2019



2017



2015



2013

