



Farmland for Sale



77.90 +/- Acres
Lake Fork Township, Logan County, IL



Matt Myers, Broker

Matthew.Myers@FirstIllinoisAgGroup.com

225 N. Water St.
Decatur, IL 62523

447.233.1246

FIRST ILLINOIS
AG GROUP



www.FirstIllinoisAgGroup.com

Logan County Farmland For Sale (77.90 Acres)

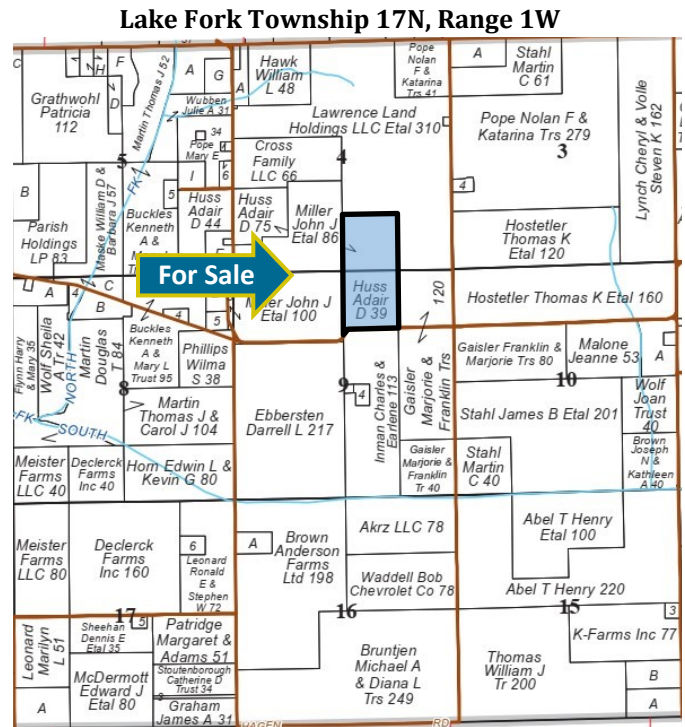
General Description

Offered for sale are **77.90 +/- acres** of high quality central Illinois farmland. The farm is located in the south eastern portion of Logan County, approximately two and a half miles southwest of Latham Illinois. The farm has access with 169 Street bordering the farm to the south.

The soil types on the sale property are Sable, Ipava, and Buckhart soils with an overall tillable soil productivity index of 142.6. The property has 77.14 FSA cropland acres and is being offered at **\$18,000 per R.E. Tax Acre**. This is an excellent opportunity to add to your farming or investment portfolio.

Please contact Matt Myers at 447-233-1246 for more information on this tract of Central Illinois farmland.

Plat of Sale Property—Logan County, IL



Reproduced with permission from Rockford Maps.

AERIAL MAP OF SALE PROPERTY



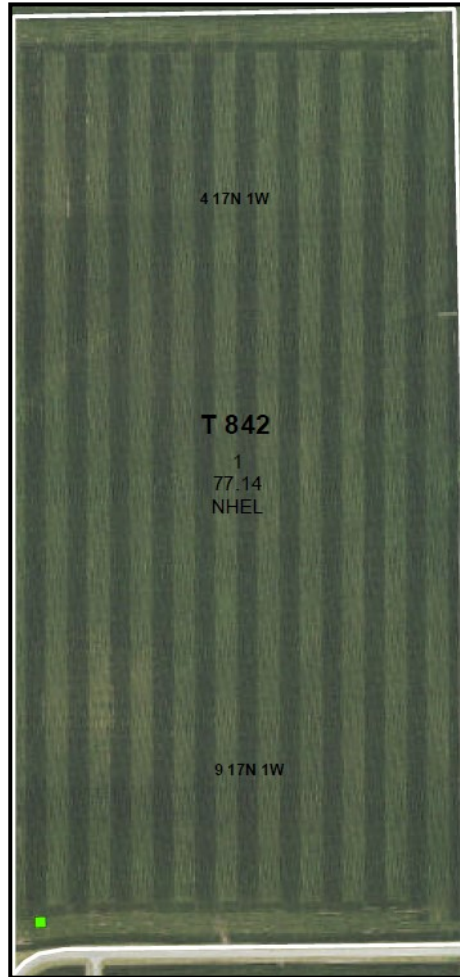
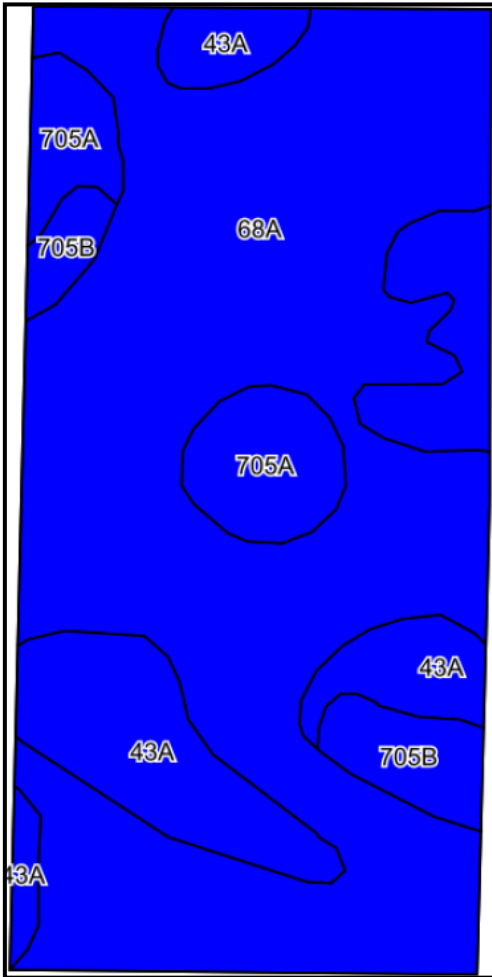
Matt Myers, Broker - (447) 233-1246

SOILS MAP/PRODUCTIVITY INDEX RATING

An inventory of these soils follows and is supported by the map below. The soils information was taken from Circular 811, published by the University of Illinois, Department of Agronomy.

Code	Soil Type		Corn Bu/A	Soy Bu/A	P.I.	%
68A	Sable Silty Clay Loam, 0 to 2% slopes		192	63	143	69.2
43A	Ipava Silt Loam, 0 to 2% slopes		191	62	142	19.1
705A	Buckhart Silt Loam, 0 to 2% slopes		190	61	142	7.1
705B	Buckhart Silt Loam, 2 to 5% slopes		189	60	139	4.6
Weighted Average			191.5	62.5	142.6	

SOIL MAP AND AERIAL MAP



FSA DATA

Farm No: 3263 Total Acres: 77.90

Crop	Base Acres	PLC Yield	Program
Corn	76.68	162	PLC

REAL ESTATE TAX DATA

Parcel No.	Acres	2023 Assessment	2023 Taxes Payable 2024	Per Acre
01-009-002-00	38.57	\$ 30,560.00	\$ 2,261.40	\$ 58.63
01-004-012-00	39.33	\$ 31,010.00	\$ 2,294.22	\$ 58.33

TERMS AND TITLE

List Price:

\$18,000 Per RE Tax Acre
(\$ 1,402,200 Total Price)

Procedure

This property is being offered as a single tract.

Down Payment & Closing

Ten percent (10%) down payment will be required with executed contract to purchase with the balance due at closing. Closing to be scheduled within thirty (30) days of contract date.

Title Policy/Minerals

The Buyer(s) will be provided a title policy in the amount of the purchase price. The owner's remaining interest, if any, of any coal and mineral rights will be conveyed with the land.

Possession and Tenancy

Possession will be granted at closing of this transaction subject to the existing farm lease. The farm is leased to David Johnston for the 2024 crop season utilizing a cash rent lease. The Buyer (s) will be required to reimburse the tenant for any preparation work done for the 2025 season.

Real Estate Taxes

Seller shall pay the 2023 taxes payable 2024 and provide a credit at closing for the 2024 real estate taxes payable 2025.

Disclaimer

The information contained in this brochure is considered accurate, however, this information is subject to verification, and no liability for errors or omissions is assumed.

Agency Disclosure

First Illinois Ag Group and its staff are agents of the Seller and, in that capacity, represent only the Seller.

**FIRST ILLINOIS
AG GROUP**

www.FirstIllinoisAgGroup.com



FIRST ILLINOIS AG GROUP

225 N. Water St.
Decatur, IL 62523

➤ Farmland for Sale Logan County, Illinois

Enhancing Farmland Ownership

FIRST ILLINOIS
AG GROUP



Decatur Office

225 North Water Street
Box 2548
Decatur, IL 62525-2548

Bruce Huber, Senior Vice President
AFM, ARA, Auctioneer
Certified Appraiser, Managing Broker
217.521-3537
Bruce.Huber@firstillinoisaggroup.com

Megan Fredrickson Farm Manager
Broker, Associate Appraiser
217.809-4949
Megan.Fredrickson@firstillinoisaggroup.com

Matthew Myers Farm Manager
Broker, Associate Appraiser
447.233-1246
Matthew.Myers@firstillinoisaggroup.com

O'Fallon Office

138 Eagle Drive
Suite B
O'Fallon, IL 62269

Dale Kellermann, Senior Vice President
AFM, Certified Appraiser, Broker
618.622-9490
Dale.Kellermann@firstillinoisaggroup.com

Mark Nappier, Farm Manager
Broker, Associate Appraiser
618.622-9465
Mark.Nappier@firstillinoisaggroup.com

Farm Management - Brokerage - Land Auctions - Rural Appraisals

Matt Myers, Broker 447-233-1246