

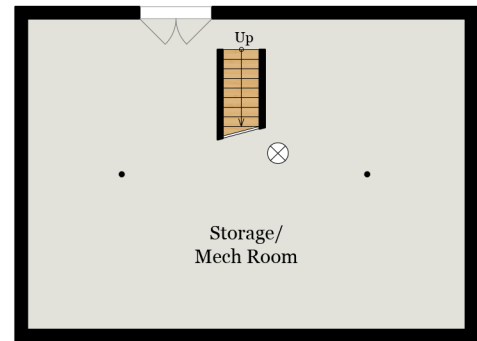
20615 BLUERIDGE MOUNTAIN ROAD

PARIS, VA 20130



GUEST HOUSE MAIN LEVEL

943 SQ FT - Finished
423 SQ FT - Unfinished & Usable



GUEST HOUSE LOWER LEVEL

943 SQ FT - Unfinished & Usable

Total Finished & Unfinished & Usable Square Footage: 17,137 SQ FT

Calculated per ANSI Standard Z765-2003

Main House: 8,679 SQ FT

- Finished: 7,526 SQ FT
 - Main Level: 3,156 SQ FT
 - Upper Level : 2,046 SQ FT
 - Lower Level: 2,324 SQ FT
- Unfinished & Usable: 1,153 SQ FT
 - 2-Car Garage on Main Level: 681 SQ FT
 - Storage/Mech Room on Lower Level: 472 SQ FT

Guest House: 2,309 SQ FT

- Finished: 943 SQ FT
 - Main Level: 943 SQ FT
- Unfinished & Usable: 1,366 SQ FT
 - Garage on Main Level: 423 SQ FT
 - Storage/Mech Room on Lower Level: 943 SQ FT

Accessory Building: 6,149 SQ FT

- Finished: 5,854 SQ FT
 - Main Level: 4,857 SQ FT
 - Mezzanine: 997 SQ FT
- Unfinished & Usable: 295 SQ FT
 - Storage/Mech Room on Main Level: 55 SQ FT
 - Storage/Mech Room on Mezzanine: 240 SQ FT