



FOR SALE

±24 Acres in Southeastern Laurens County

 **REEDY**
LAND CO.
A DIVISION OF REEDY PROPERTY GROUP

Parcel Overview

00 Puckett Ferry Road

Laurens County TMS#: p/o 486-99-00-001



00 Puckett Ferry Road

Cross Hill, SC 29332

Property Highlights

- Rolling wooded acreage in Southern Laurens County with no zoning or restrictions.
- ±650 ft of creek frontage surrounded by mature hardwoods.
- Excellent level homesite near Puckett Ferry Road.
- Great hunting for deer, turkey and small game.
- Power, phone and fiber internet available.
- Create your ideal hobby farm or the ultimate hunting estate!

Location Highlights

- 10 minutes to Lake Greenwood access and Break On The Lake Restaurant.
- Less than 30 minutes to Greenwood, SC, Clinton, SC or Newberry, SC.
- ±1 hour from Greenville, SC and Columbia, SC.
- ±10 minutes to Belfast WMA.
- ±2 minutes from Mayberry Diner in Cross Hill, SC.

Offering Summary

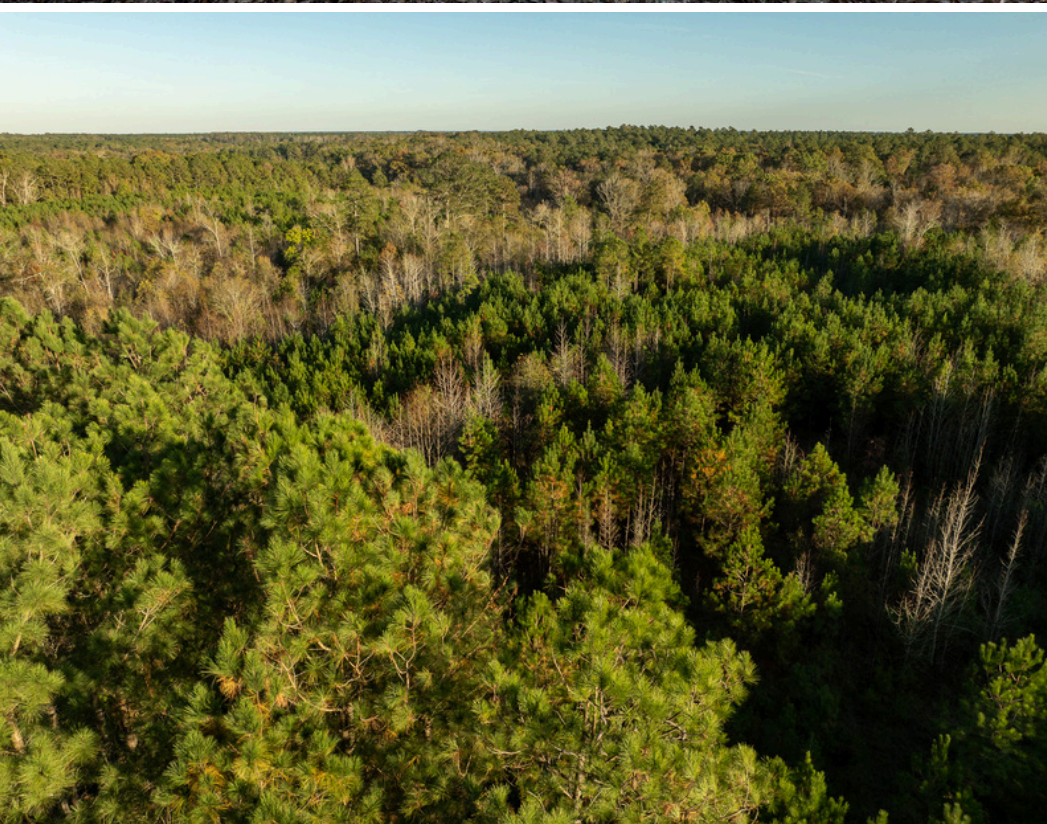
Lot Size: ±24 Acres

Sale Price: \$216,000.00

Acreage, taxes, utilities and lot dimensions to be verified by Buyer and/or Buyers agent



Additional Photos



Map

Cross Hill, SC



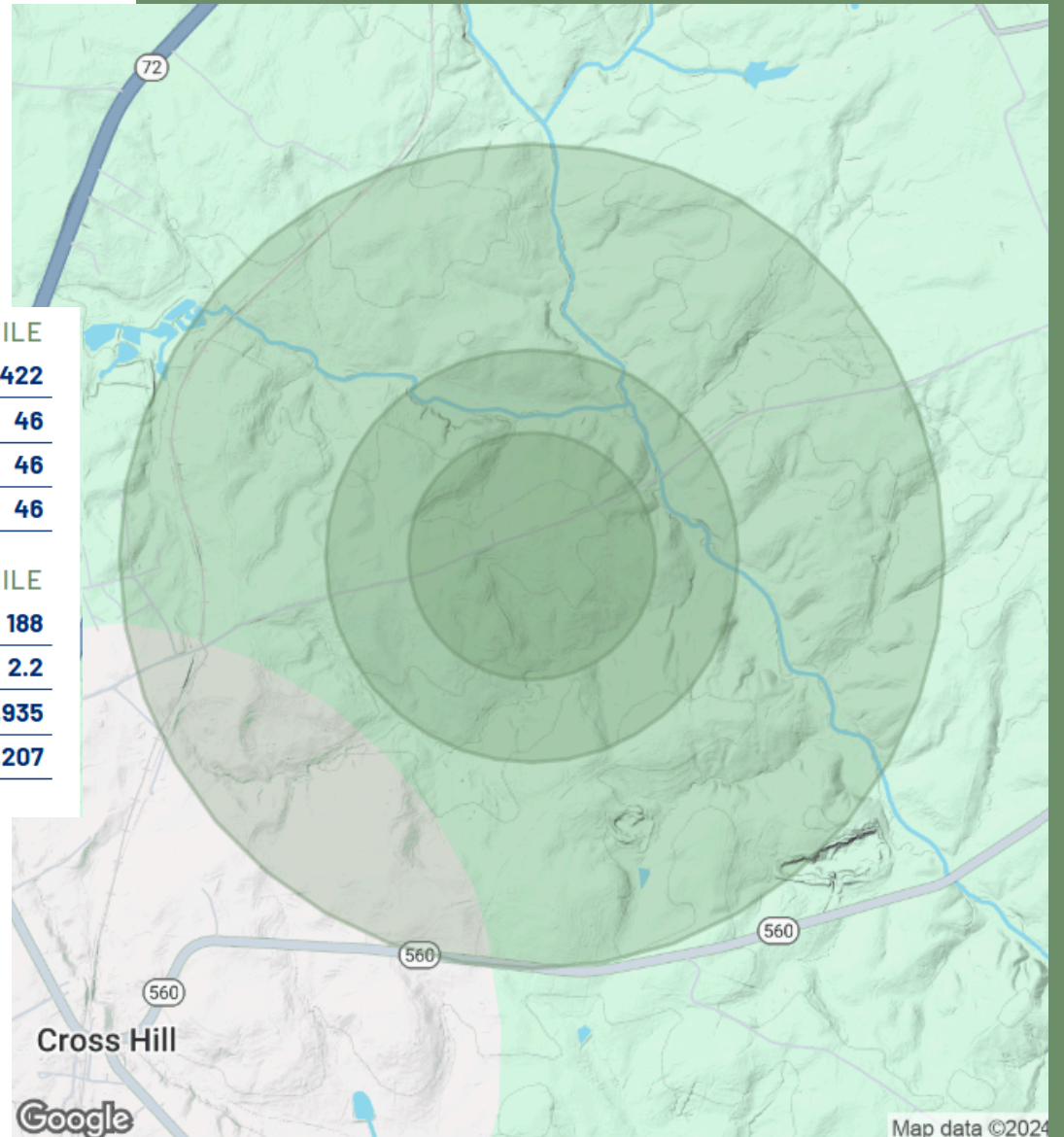
Local Demographics

00 Puckett Ferry Road

POPULATION	0.3 MILES	0.5 MILES	1 MILE
Total Population	49	142	422
Average Age	45	46	46
Average Age (Male)	44	45	46
Average Age (Female)	46	46	46

HOUSEHOLDS & INCOME	0.3 MILES	0.5 MILES	1 MILE
Total Households	21	63	188
# of Persons per HH	2.3	2.3	2.2
Average HH Income	\$88,451	\$84,507	\$82,935
Average House Value	\$199,271	\$199,940	\$200,207

Demographics data derived from AlphaMap



Contact Information

Reedy Land Co

LAND IS MORE THAN DIRT. IT'S YOUR LEGACY.

Whether you're building on a dream or managing generational wealth, the land you choose to call home is deeply personal.

People. Loyalty. Trust. These are the foundations of our approach to real estate. We connect people to places. We guide development for future generations. And, we transform your vision of the "good life" into your everyday life.



John Stillwell

864-414-1879

jstillwell@reedypg.com

