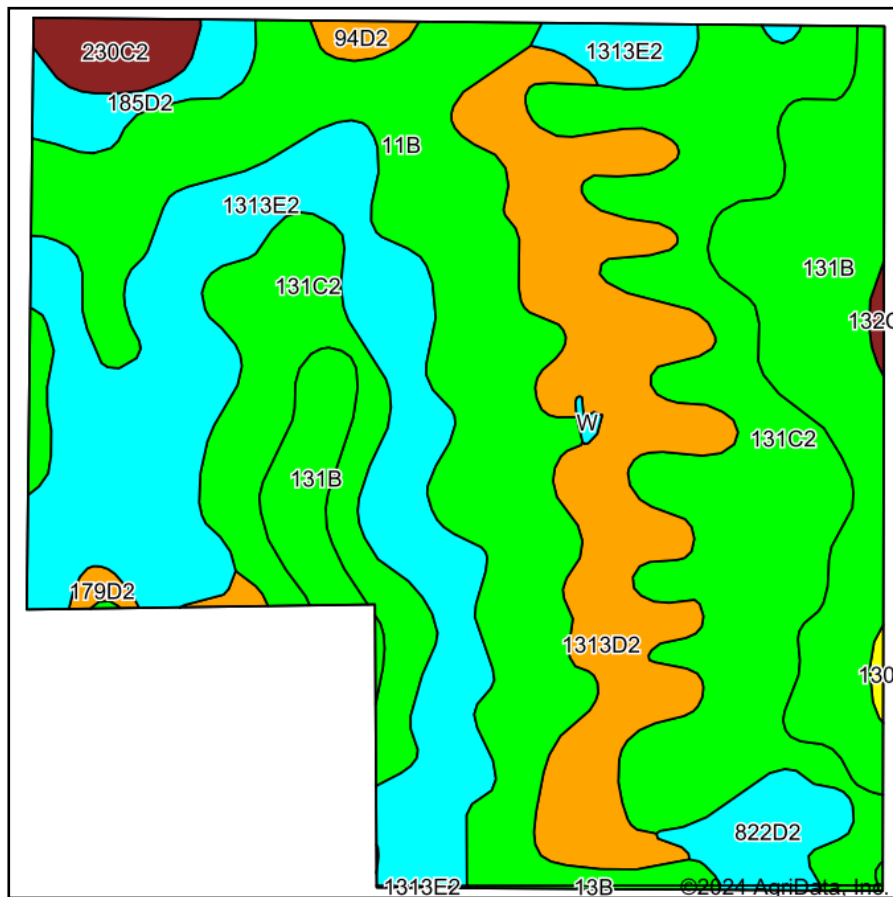
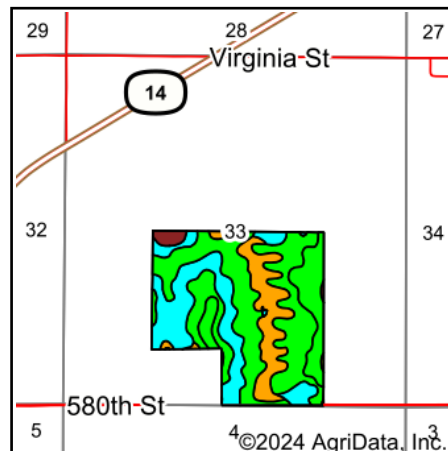


Soils Map



Soils data provided by USDA and NRCS.



State: **Iowa**
 County: **Marion**
 Location: **33-74N-20W**
 Township: **Washington**
 Acres: **138.53**
 Date: **10/29/2024**

Hawkeye Farm Mgmt & Real Estate

United Country Real Estate
 22 N Main, Albion IA Phone: 641-932-7796
 Email: hawkeye@uciowa.com
 On the web: www.uciowa.com
 www.iowawhitehallfarms.com

Maps Provided By:

surety
 CUSTOMIZED ONLINE MAPPING
 © AgriData, Inc. 2023 www.AgriDataInc.com



Area Symbol: IA117, Soil Area Version: 32
 Area Symbol: IA125, Soil Area Version: 33

Code	Soil Description	Acres	Percent of field	CSR2 Legend	Non-Irr Class *c	CSR2**	CSR	*n NCCPI Corn	*n NCCPI Soybeans
131C2	Pershing silt loam, 5 to 9 percent slopes, moderately eroded	35.89	25.9%		IIIe	62	49	68	51
1313E2	Munterville silt loam, 14 to 18 percent slopes, moderately eroded	28.30	20.4%		VIe	22	5	56	39
11B	Colo-Ely silty clay loams, 2 to 5 percent slopes	28.12	20.3%		Ile	81	65	84	79
1313D2	Munterville silt loam, 9 to 14 percent slopes, moderately eroded	19.09	13.8%		VIe	34	10	59	42
131B	Pershing silt loam, 2 to 5 percent slopes	17.07	12.3%		IIIe	70	72	74	59
822D2	Lamoni silty clay loam, 9 to 14 percent slopes, moderately eroded	2.94	2.1%		IVe	10	15	63	49
185D2	Bauer silt loam, 9 to 14 percent slopes, moderately eroded	2.57	1.9%		VIe	13	20	36	19
230C2	Clearfield-Arispe silty clay loams, 5 to 9 percent slopes, moderately eroded	2.24	1.6%		IIIw	58	53	69	63
94D2	Caleb-Mystic loams, 9 to 14 percent slopes, moderately eroded	0.69	0.5%		IVe	34	35	73	53
179D2	Gara loam, 9 to 14 percent slopes, moderately eroded	0.68	0.5%		IVe	38	43	66	48
132C2	Weller silt loam, 5 to 9 percent slopes, moderately eroded	0.24	0.2%		IIIe	59	45	81	68
130	Belinda silt loam, 0 to 2 percent slopes	0.20	0.1%		IIIw	47	65	75	63
13B	Zook-Olmritz-Vesser complex, 0 to 5 percent slopes	0.19	0.1%		IIw	68	53	70	74
W	Water	0.14	0.1%			0	0		

Soils data provided by USDA and NRCS.

Code	Soil Description	Acres	Percent of field	CSR2 Legend	Non-Irr Class *c	CSR2**	CSR	*n NCCPI Corn	*n NCCPI Soybeans
822D2	Lamoni silty clay loam, 9 to 14 percent slopes, moderately eroded	0.10	0.1%		IVe	10	15	63	49
131C2	Pershing silty clay loam, 5 to 9 percent slopes, moderately eroded	0.07	0.1%		IIIe	62	45	68	56
Weighted Average					*-	52.4	39.4	*n 67.6	*n 53.6

**IA has updated the CSR values for each county to CSR2.

*n: The aggregation method is "Weighted Average using all components"
*c: Using Capabilities Class Dominant Condition Aggregation Method
*- Non Irr Class weighted average cannot be calculated on the current soils data due to missing data.