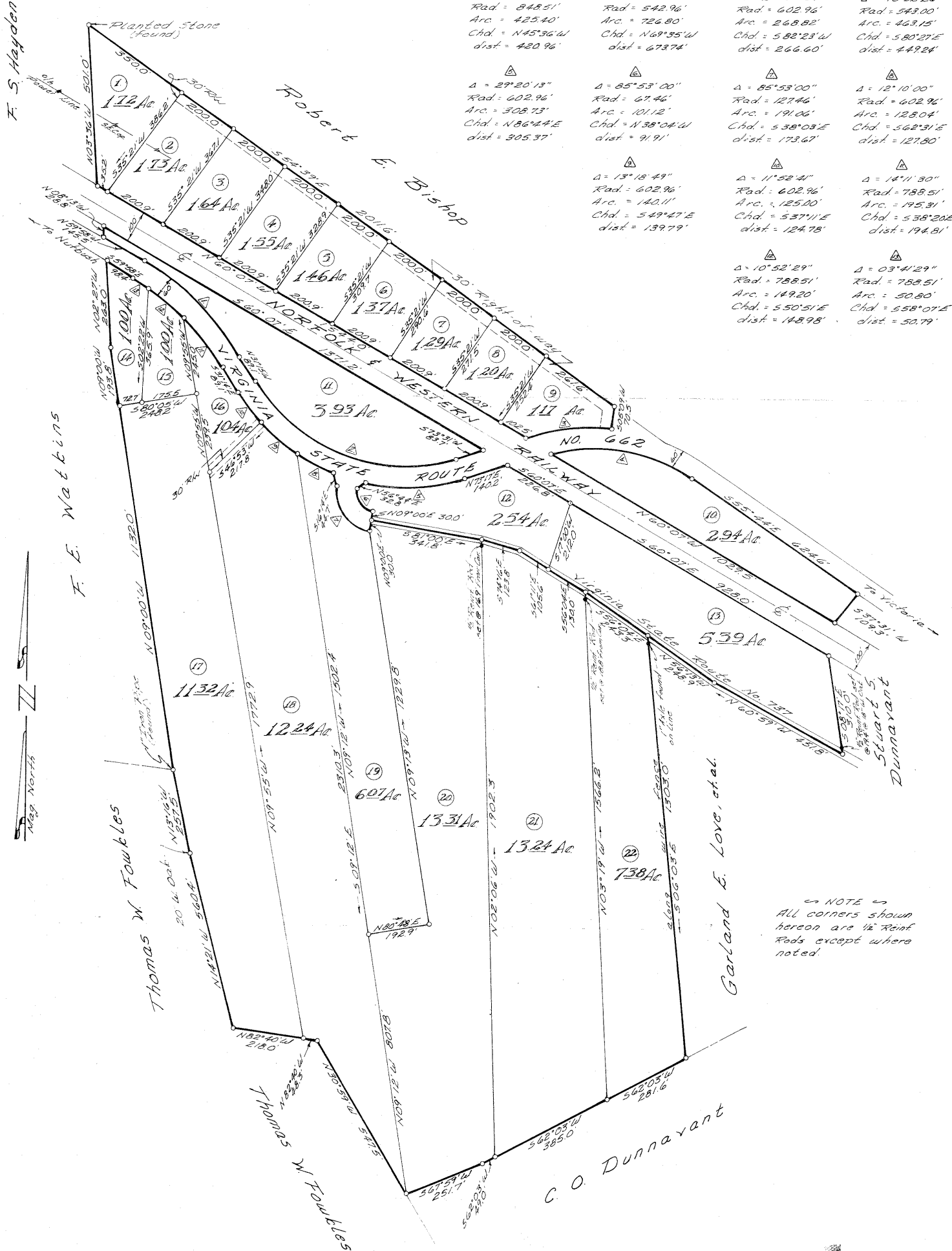


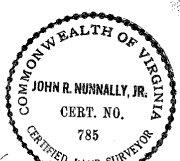
CURVE DATA

$\Delta = 28^{\circ}45'30''$ Rad = 848.51' Arc = 425.40' Chd = N45°36'W dist = 420.96'	$\Delta = 76^{\circ}41'43''$ Rad = 542.96' Arc = 726.80' Chd = N69°35'W dist = 673.74'	$\Delta = 25^{\circ}32'39''$ Rad = 602.96' Arc = 268.82' Chd = 5.82°23'W dist = 266.60'	$\Delta = 45^{\circ}52'26''$ Rad = 543.00' Arc = 463.15' Chd = 5.90°27'E dist = 449.24'
$\Delta = 29^{\circ}20'13''$ Rad = 602.96' Arc = 308.73' Chd = N86°44'E dist = 305.37'	$\Delta = 85^{\circ}53'00''$ Rad = 67.46' Arc = 101.12' Chd = N38°04'W dist = 91.91'	$\Delta = 85^{\circ}53'00''$ Rad = 127.46' Arc = 191.06' Chd = 5.38°03'E dist = 123.67'	$\Delta = 12^{\circ}10'00''$ Rad = 602.96' Arc = 128.04' Chd = 5.62°31'E dist = 127.80'
$\Delta = 13^{\circ}18'49''$ Rad = 602.96' Arc = 140.11' Chd = 5.49°47'E dist = 139.79'	$\Delta = 11^{\circ}52'41''$ Rad = 602.96' Arc = 125.00' Chd = 5.37°11'E dist = 124.78'	$\Delta = 14^{\circ}11'30''$ Rad = 788.51' Arc = 195.31' Chd = 5.38°20'E dist = 174.81'	
		$\Delta = 10^{\circ}52'29''$ Rad = 788.51' Arc = 149.20' Chd = 5.50°51'E dist = 148.98'	$\Delta = 03^{\circ}41'29''$ Rad = 788.51' Arc = 50.80' Chd = 5.58°07'E dist = 50.79'



NOTE  
 All corners shown hereon are 1/2" Rein Rods except where noted.

Plat of 22 parcels of land, situated in Plymouth District, Lunenburg County, Virginia; being that same real property conveyed unto William D Jones by deed of record in the Circuit Court Clerk's Office of Lunenburg County, Va. in Deed Book 73, Page 237. Surveyed for Rae George.  
 Scale: 1 in. = 200 Ft.  
 Sept 17, 1975



John R. Hunnally, Jr., C.L.S.  
 Green Bay, Virginia

60