



48± ACRES
WEBSTER COUNTY, MS
\$120,000



SMALLTOWN
HUNTING PROPERTIES
& REAL ESTATESM

OFFICE (662) 338-2027

THE WEBSTER 48

PROPERTY PROFILE

LOCATION:

- Hohenlinden Road
Mantee, MS 39751
- Webster County
- 6± Miles SW of Mantee
- 11± Miles N of Mathiston

COORDINATES:

- 33.69874, -89.14715

PROPERTY USE:

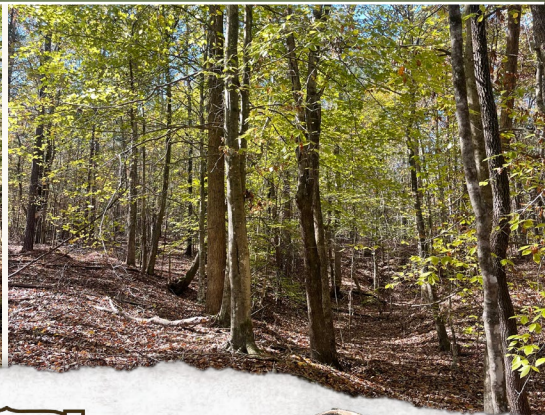
- Recreational
- Hunting
- Potential Homesite

PROPERTY INFORMATION:

- 48± Acres
- Paved Road Frontage
- Seasonal Creek
- Hardwood Timber
- Wildlife
- Utilities Available
- East Webster School District

TAX INFORMATION:

- 2023 - \$146.58
- Parcel # 120000914.00



MICHAEL COOPER | MANAGING BROKER
C: 662-285-8686 | mcooper@smalltownproperties.com

FORD TRUE | LAND SPECIALIST
C: 662-645-1119 | ford@smalltownproperties.com

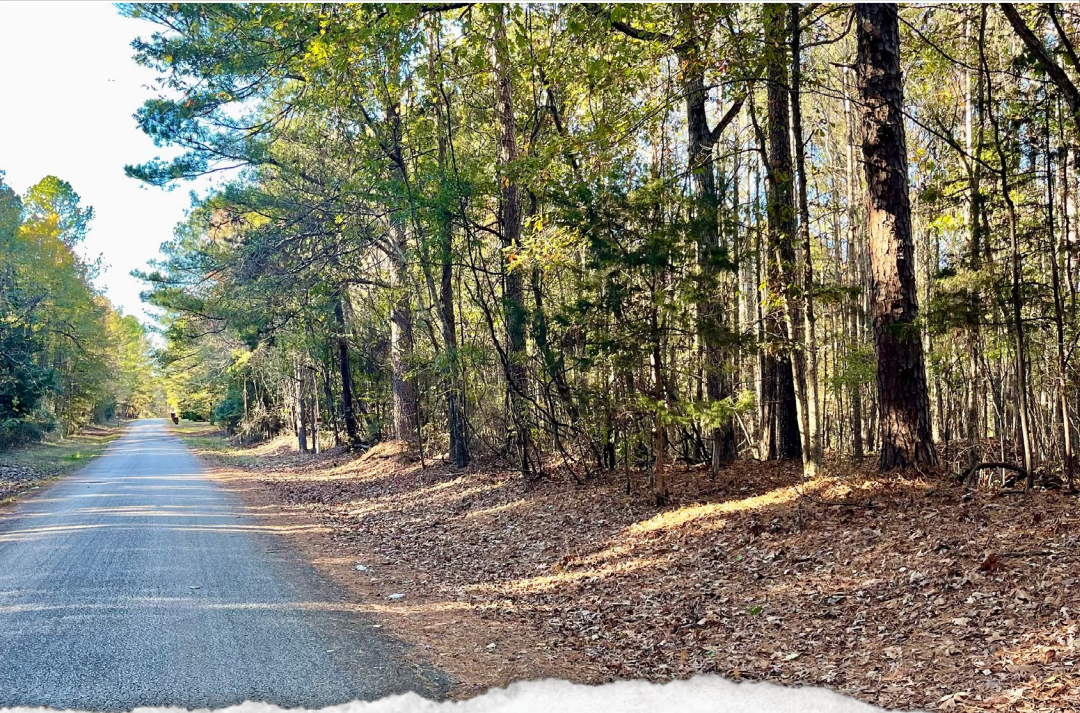
Information is believed to be accurate but not guaranteed.

501 Hwy 12 W Ste.150B - Starkville, MS 39071 | O: 662-338-2027 | smalltownproperties.com

WELCOME TO THE WEBSTER 48

INTRODUCING A 48± ACRE PROPERTY IN WEBSTER COUNTY, MS! If you have been searching for a hunting tract or a potential spot to build your dream home out in the country, the Webster 48 could be the one. Situated on the paved Hohenlinden Road approximately 6 miles west of Mantee, MS, this place offers rolling hills and hardwoods. An abundant population of large and small game use this property. You will find a seasonal creek traversing the tract, and from the rolling hills, there are great views of the creek. There is a potential home/cabin site along the road where utilities are available. As a bonus, this property is located in the sought-after East Webster School District. Whether you are looking for a hunting property or a potential home site, the Webster 48 is worth a look.

Call Michael Cooper or Ford True today!



MICHAEL COOPER | MANAGING BROKER
C: 662-285-8686 | mcooper@smalltownproperties.com



FORD TRUE | LAND SPECIALIST
C: 662-645-1119 | ford@smalltownproperties.com

Information is believed to be accurate but not guaranteed.

48± ACRES

WEBSTER COUNTY, MISSISSIPPI



MICHAEL COOPER | MANAGING BROKER
C: 662-285-8686 | mcooper@smalltownproperties.com



SMALLTOWN
HUNTING PROPERTIES
& REAL ESTATE™

Information is believed to be accurate but not guaranteed.



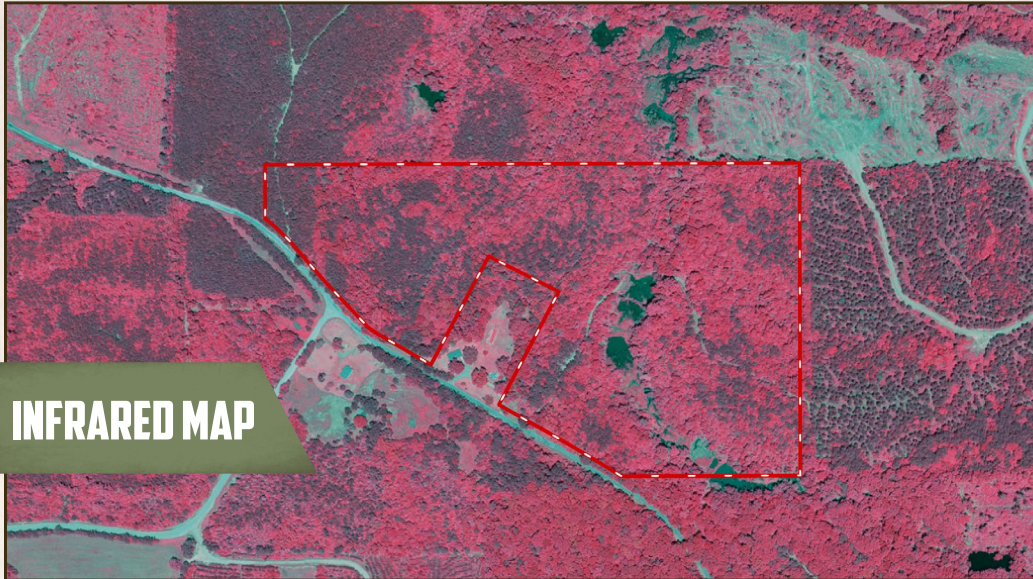
FORD TRUE | LAND SPECIALIST
C: 662-645-1119 | ford@smalltownproperties.com

501 Hwy 12 W Ste.150B - Starkville, MS 39071 | O: 662-338-2027 | smalltownproperties.com

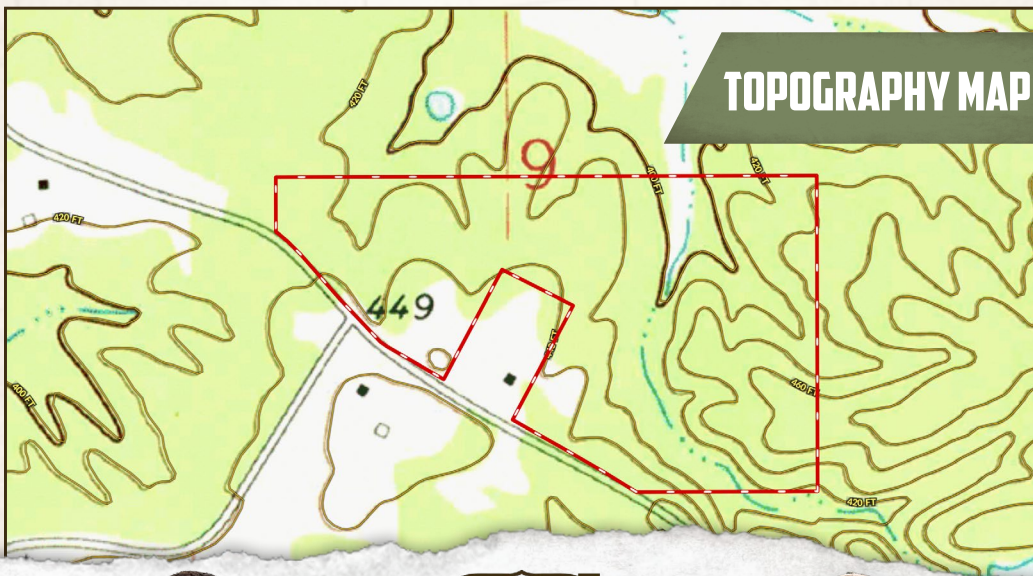
48± ACRES

WEBSTER COUNTY, MISSISSIPPI

INFRARED MAP



TOPOGRAPHY MAP



MICHAEL COOPER | MANAGING BROKER
C: 662-285-8686 | mcooper@smalltownproperties.com



SMALLTOWN
HUNTING PROPERTIES
& REAL ESTATESM

Information is believed to be accurate but not guaranteed.

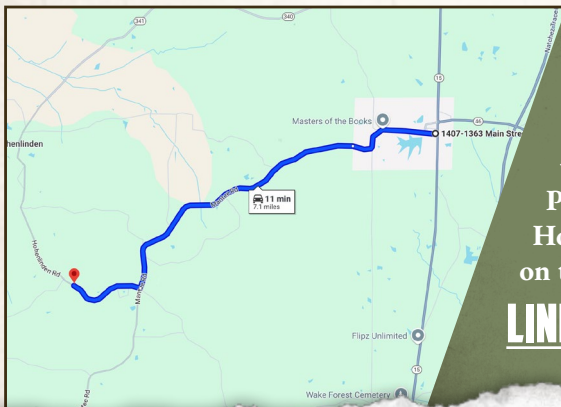


FORD TRUE | LAND SPECIALIST
C: 662-645-1119 | ford@smalltownproperties.com

501 Hwy 12 W Ste.150B - Starkville, MS 39071 | O: 662-338-2027 | smalltownproperties.com

48± ACRES

WEBSTER COUNTY, MISSISSIPPI



Directions From the Intersection of Main Street and Highway 15 in Mantee, MS: Travel 1.5 miles west, then turn left onto Mantee Road. Proceed 4.4 miles then turn right onto Hohenlinden Road. The property will be on the right in 1.2 miles.

[LINK TO GOOGLE MAP DIRECTIONS](#)



MICHAEL COOPER | MANAGING BROKER
C: 662-285-8686 | mcooper@smalltownproperties.com



SMALLTOWN
HUNTING PROPERTIES
& REAL ESTATE™

Information is believed to be accurate but not guaranteed.



FORD TRUE | LAND SPECIALIST
C: 662-645-1119 | ford@smalltownproperties.com

501 Hwy 12 W Ste.150B - Starkville, MS 39071 | O: 662-338-2027 | smalltownproperties.com