



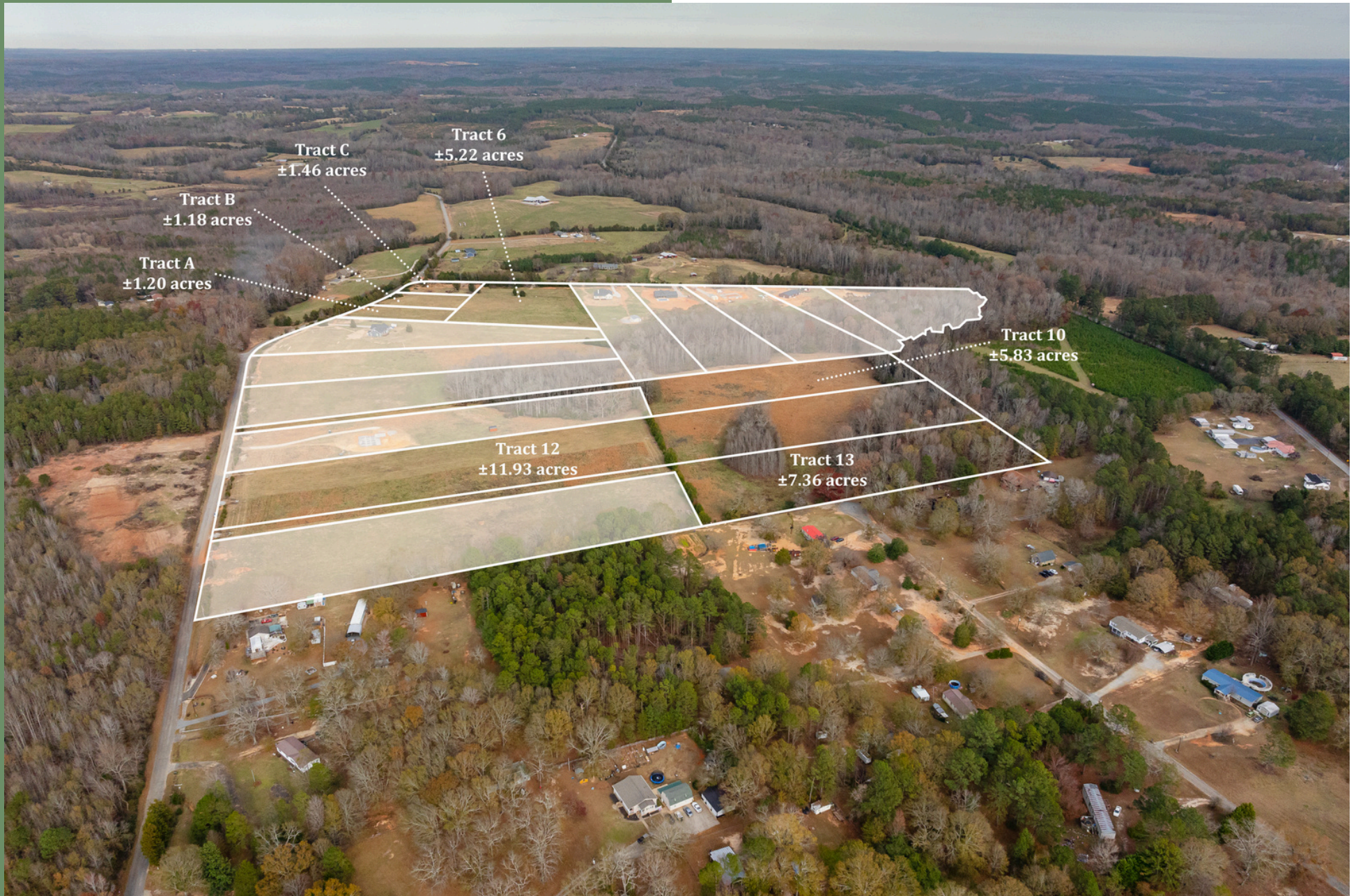
FOR SALE

±1.18-11.93 Acre Homesites in Honea Path, SC

 **REEDY**
LAND CO.
A DIVISION OF REEDY PROPERTY GROUP

Parcel Overview

00 Taylor Road | Honea Path, SC 29654



00 Taylor Road

Honea Path, SC 29654

Property Highlights

- **Road Frontage:** Taylor Road & Ashley Road
- **Topography:** Level
- **Anderson County Schools:**
 - Honea Path Elementary | Honea Path Middle | Belton Honea Path High School
- **Utilities:** Power, Water, Cable, Internet, & Septic Possible
- Unzoned
- Mature Hardwoods & Pines with Pastureland

Location Highlights

- ± 4 Minutes from Downtown Honea Path
- ± 5 Minutes to Downtown Laurens
- ± 15 Minutes to Belton
- ± 30 Minutes from Anderson
- ± 45 Minutes to Greenville

Offering Summary

Lot A:	±1.20 Acres \$65,000.00
Lot B:	±1.18 Acres \$65,00.00
Lot C:	±1.46 Acres \$65,000.00
Lot 6:	±5.22 Acres \$90,000.00
Lot 10:	±5.83 Acres \$95,000.00
Lot 12:	±11.93 Acres \$185,000.00
Lot 13:	±7.36 Acres \$128,000.00

Acreage, taxes, utilities and lot dimensions to be verified by Buyer and/or Buyers agent



Additional Photos



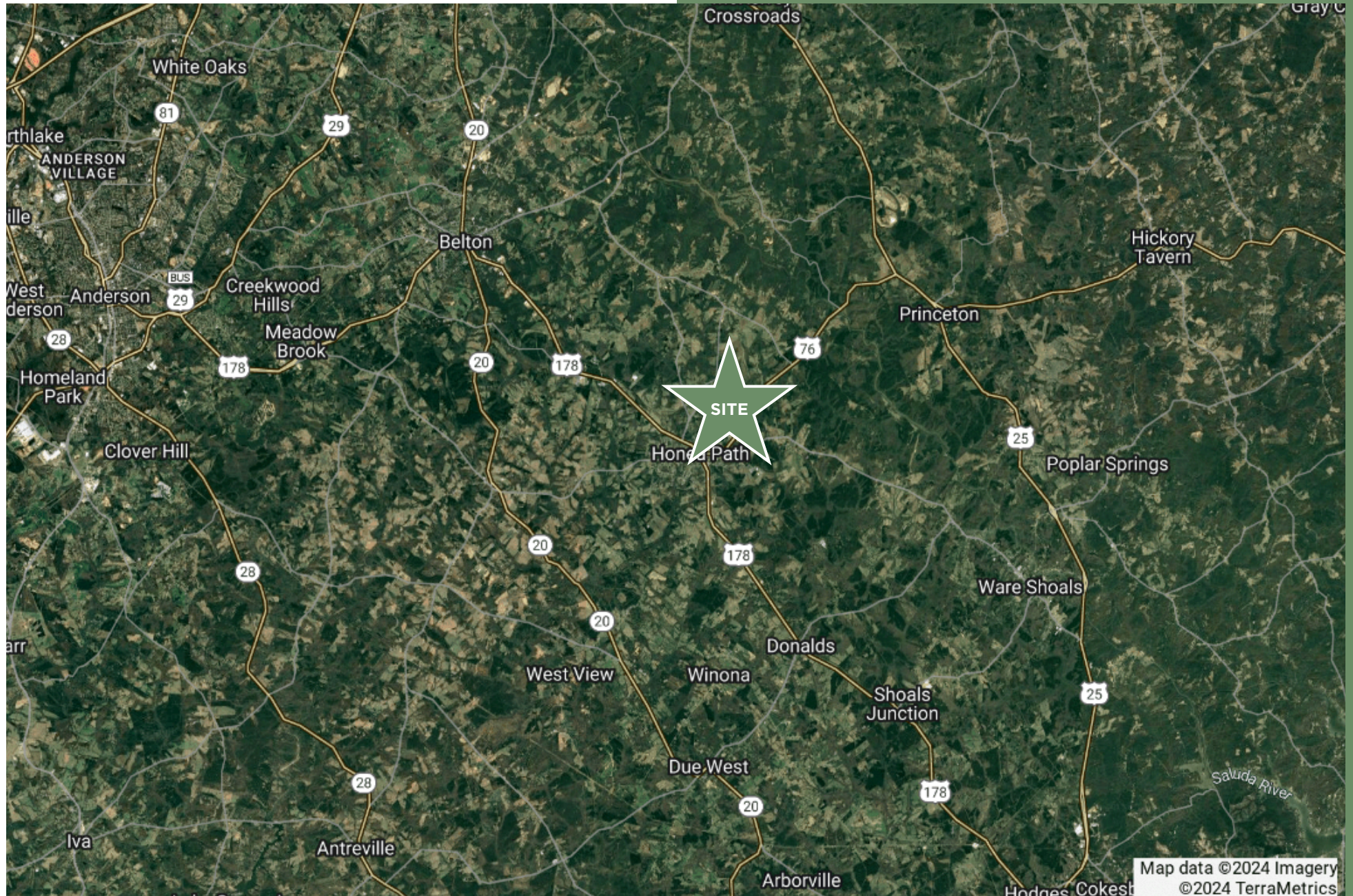
Map

Honea Path, SC



Municipality Map

Honea Path, SC



Contact Information

Reedy Land Co

LAND IS MORE THAN DIRT. IT'S YOUR LEGACY.

Whether you're building on a dream or managing generational wealth, the land you choose to call home is deeply personal.

People. Loyalty. Trust. These are the foundations of our approach to real estate. We connect people to places. We guide development for future generations. And, we transform your vision of the "good life" into your everyday life.

Anderson Drake

864.546.0342

adrake@reedypg.com



Tyler Whims

864.430.4507

twhims@reedypg.com

