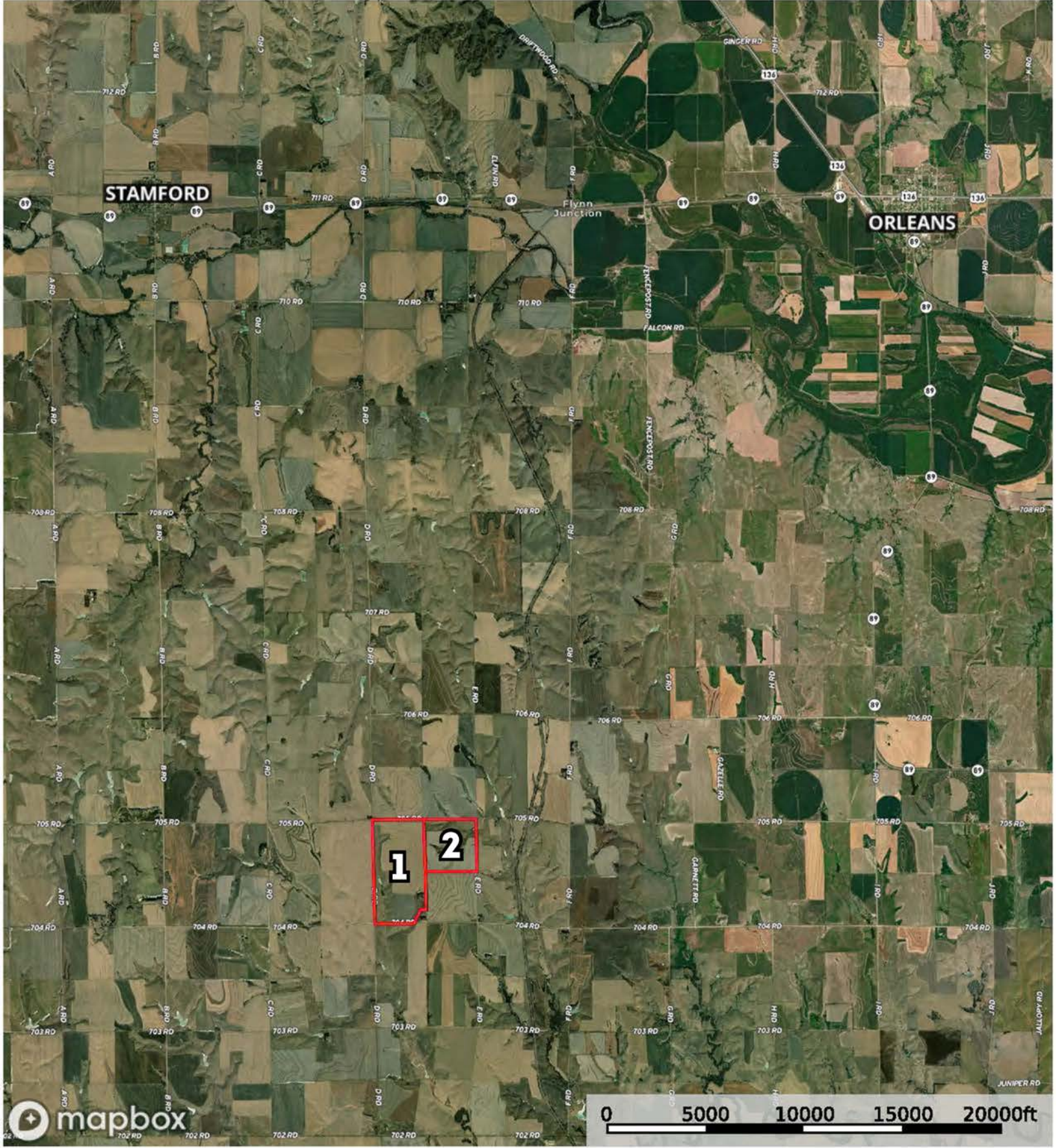
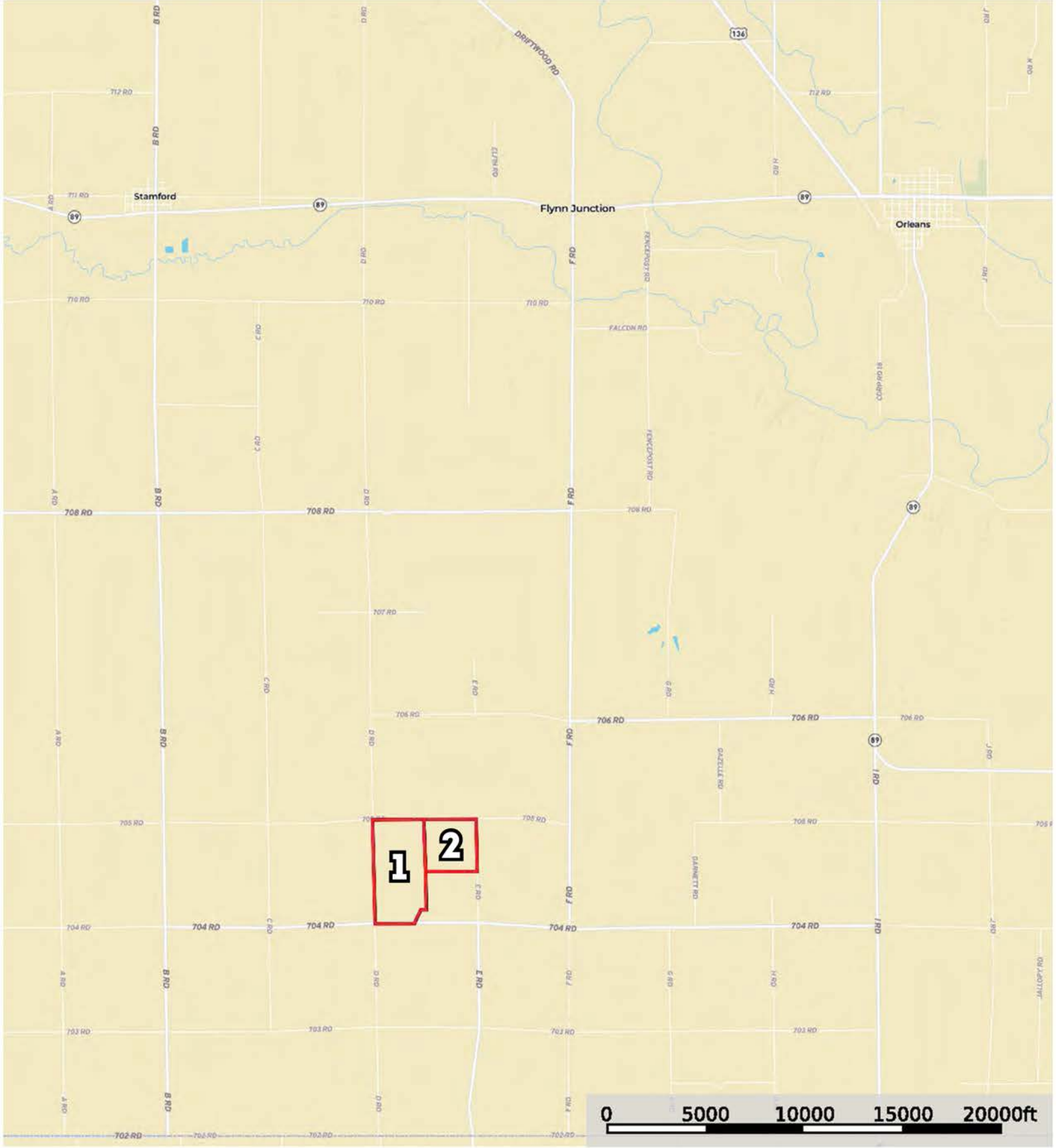


 Tract 2  Tract 1



Tract 2 Tract 1

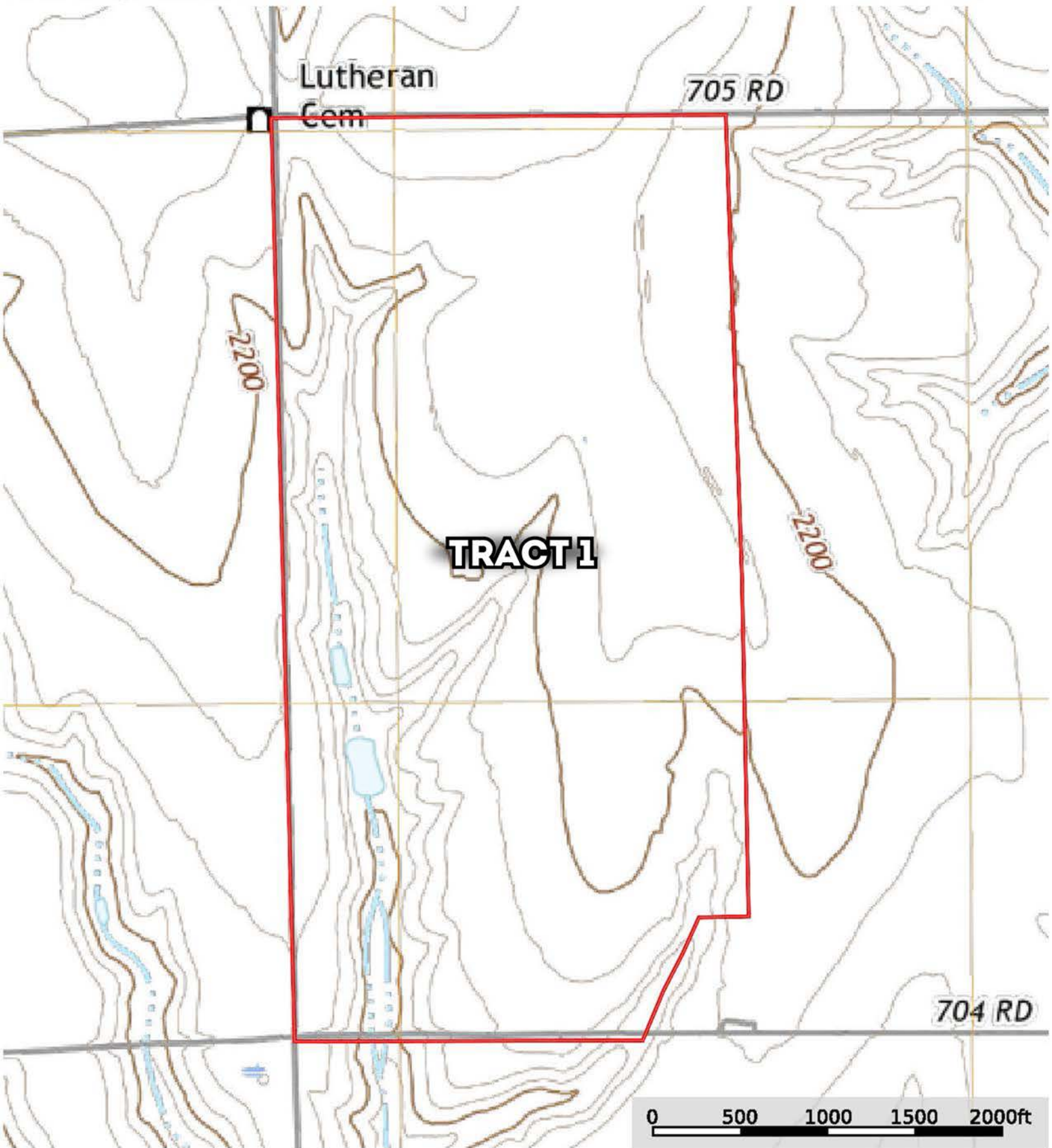


 Tract 2  Tract 1



 Tract 1





Tract 1



 Tract 1

SOIL CODE	SOIL DESCRIPTION	ACRES	%	CPI	NCCPI	CAP
2674	Holdrege silt loam, 1 to 3 percent slopes, plains and breaks	220.16	70.74	0	76	2e
2810	Uly and Coly silt loams, 11 to 30 percent slopes	82.88	26.63	0	63	6e
2528	Coly and Uly silt loams, 3 to 11 percent slopes, eroded	6.1	1.96	0	65	4e
2526	Coly and Nuckolls silt loams, 11 to 30 percent slopes, eroded	2.09	0.67	0	54	6e
TOTALS		311.23(*)	100%	-	72.17	3.13

(*) Total acres may differ in the second decimal compared to the sum of each acreage soil. This is due to a round error because we only show the acres of each soil with two decimal.

Capability Legend

Increased Limitations and Hazards

Decreased Adaptability and Freedom of Choice Users

Land, Capability

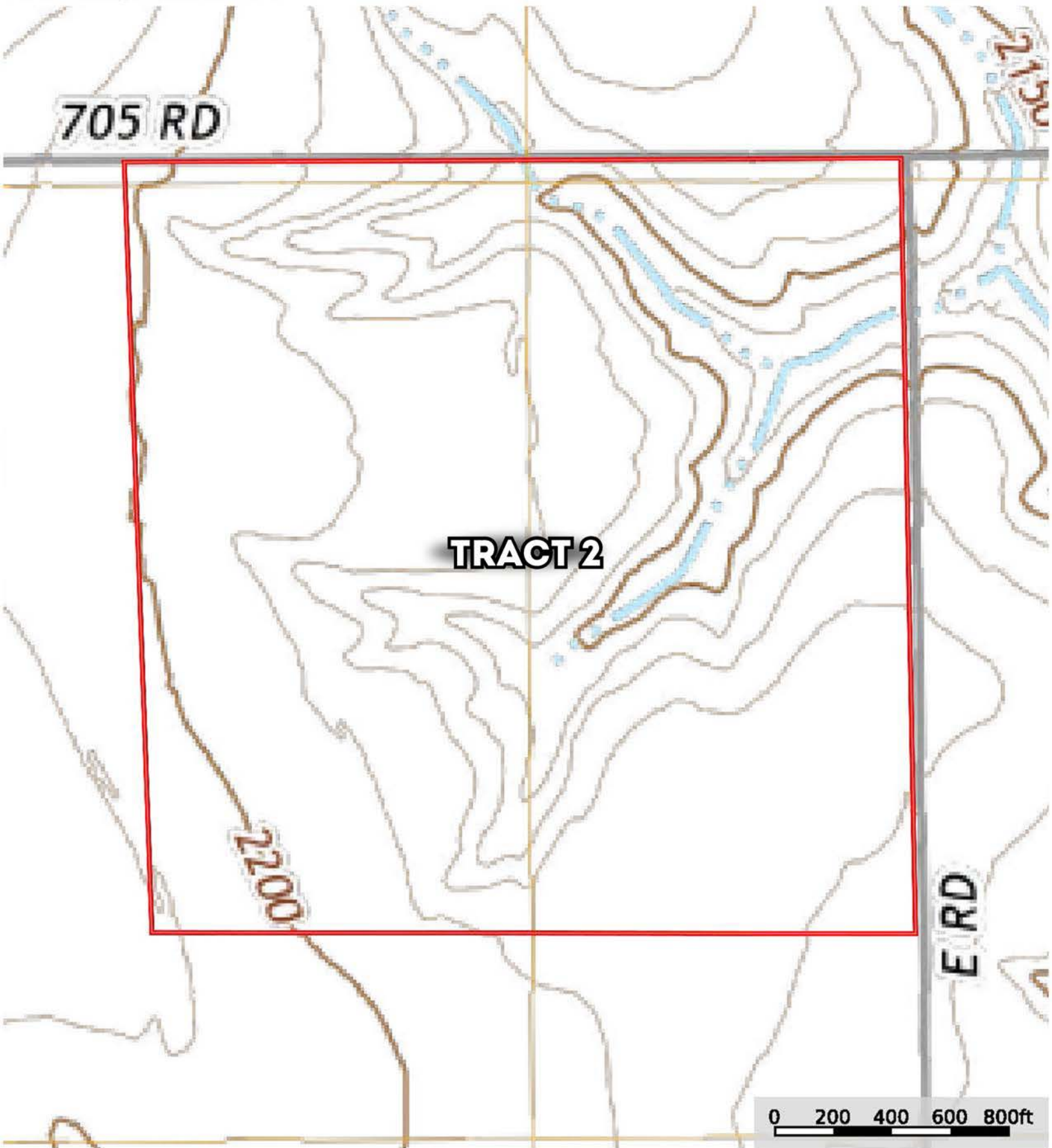
	1	2	3	4	5	6	7	8
'Wild Life'	•	•	•	•	•	•	•	•
Forestry	•	•	•	•	•	•	•	
Limited	•	•	•	•	•	•	•	
Moderate	•	•	•	•	•	•		
Intense	•	•	•	•	•			
Limited	•	•	•	•				
Moderate	•	•	•					
Intense	•	•						
Very Intense	•							

Grazing Cultivation

(c) climatic limitations (e) susceptibility to erosion

(s) soil limitations within the rooting zone (w) excess of water





 Tract 2

SOIL CODE	SOIL DESCRIPTION	ACRES	%	CPI	NCCPI	CAP
2674	Holdrege silt loam, 1 to 3 percent slopes, plains and breaks	90.85	56.52	0	76	2e
2810	Uly and Coly silt loams, 11 to 30 percent slopes	61.18	38.06	0	63	6e
2526	Coly and Nuckolls silt loams, 11 to 30 percent slopes, eroded	7.84	4.88	0	54	6e
2528	Coly and Uly silt loams, 3 to 11 percent slopes, eroded	0.87	0.54	0	65	4e
TOTALS		160.74(*)	100%	-	69.92	3.73

(*) Total acres may differ in the second decimal compared to the sum of each acreage soil. This is due to a round error because we only show the acres of each soil with two decimal.

Capability Legend

Increased Limitations and Hazards

Decreased Adaptability and Freedom of Choice Users

Land, Capability

	1	2	3	4	5	6	7	8
'Wild Life'	•	•	•	•	•	•	•	•
Forestry	•	•	•	•	•	•	•	
Limited	•	•	•	•	•	•	•	
Moderate	•	•	•	•	•	•		
Intense	•	•	•	•	•			
Limited	•	•	•	•				
Moderate	•	•	•					
Intense	•	•						
Very Intense	•							

Grazing Cultivation

(c) climatic limitations (e) susceptibility to erosion

(s) soil limitations within the rooting zone (w) excess of water