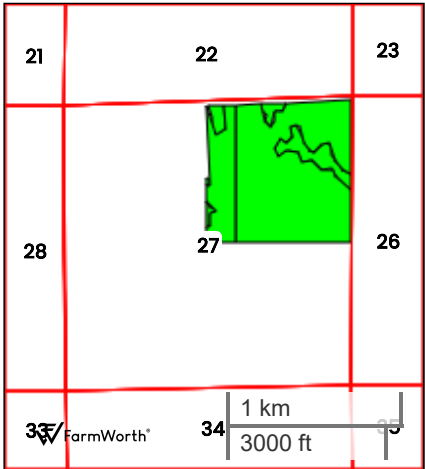
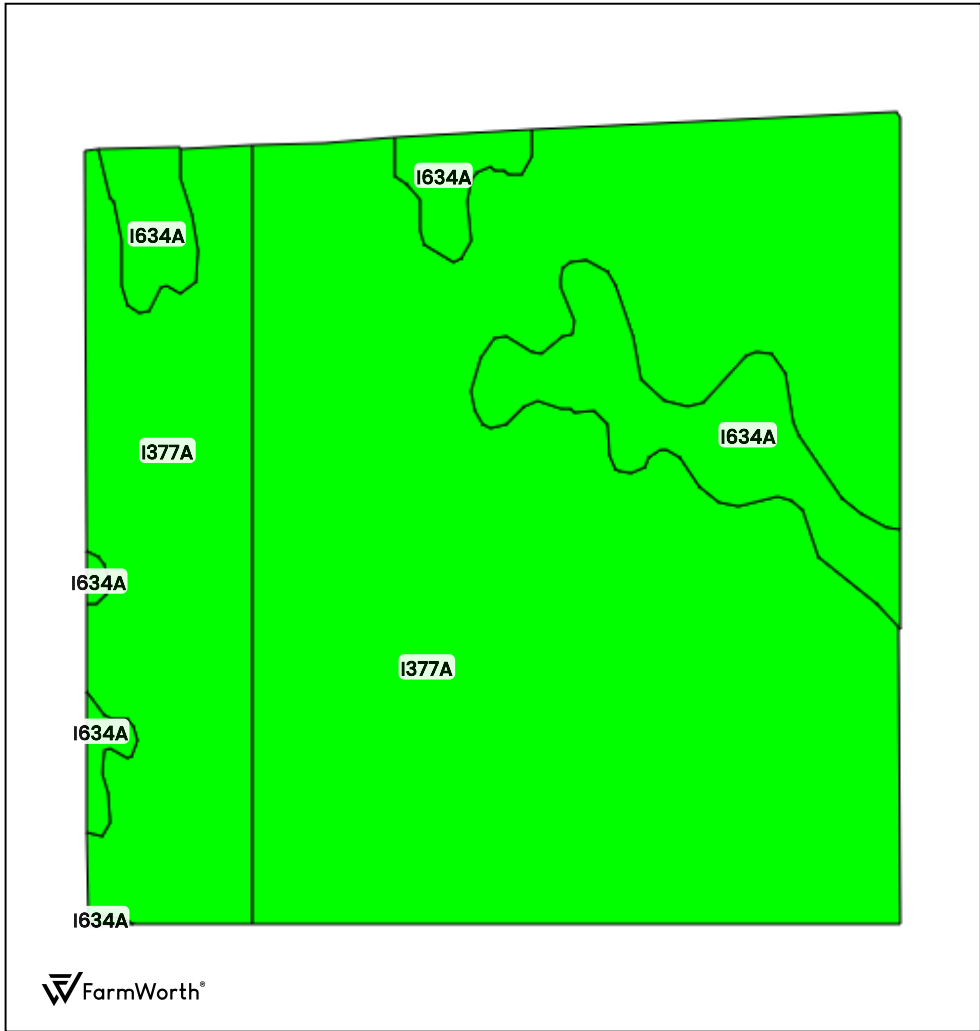




UNDEFINED FARM (160.00 AC TOTAL, 157.54 AC TILLABLE)
TILLABLE SOILS



County: **Clay County, MN**
Location: **27-140N-47W**
Township: **Moland**
Acres: **157.54**
Date: **12/19/2024**



Field borders obtained from Farm Service Agency
as of 2008

FarmWorth, LLC makes no representations or warranties, express or implied, as to the accuracy of any information, data, numerical values, boundaries, or any other information generated through the use of FarmWorth.com. User is solely responsible for independently investigating and determining all information provided through FarmWorth.com prior to use and waives any and all claims against FarmWorth, LLC for any inaccuracies or inconsistencies in the information and/or data.

Code		Description	Acres	% of field	MN CPI	Soil Class (Non-Irr)
I377A		Wheatville silt loam, 0 to 2 percent slopes	141.03	89.52 %	89	2
I634A		Augsburg silt loam, 0 to 1 percent slopes	16.52	10.49 %	90	2
Average:					89.1	

MN Productivity Index tables are obtained from the [NRCS Field Office Technical Guide](#)
Soils data provided by USDA and NRCS.