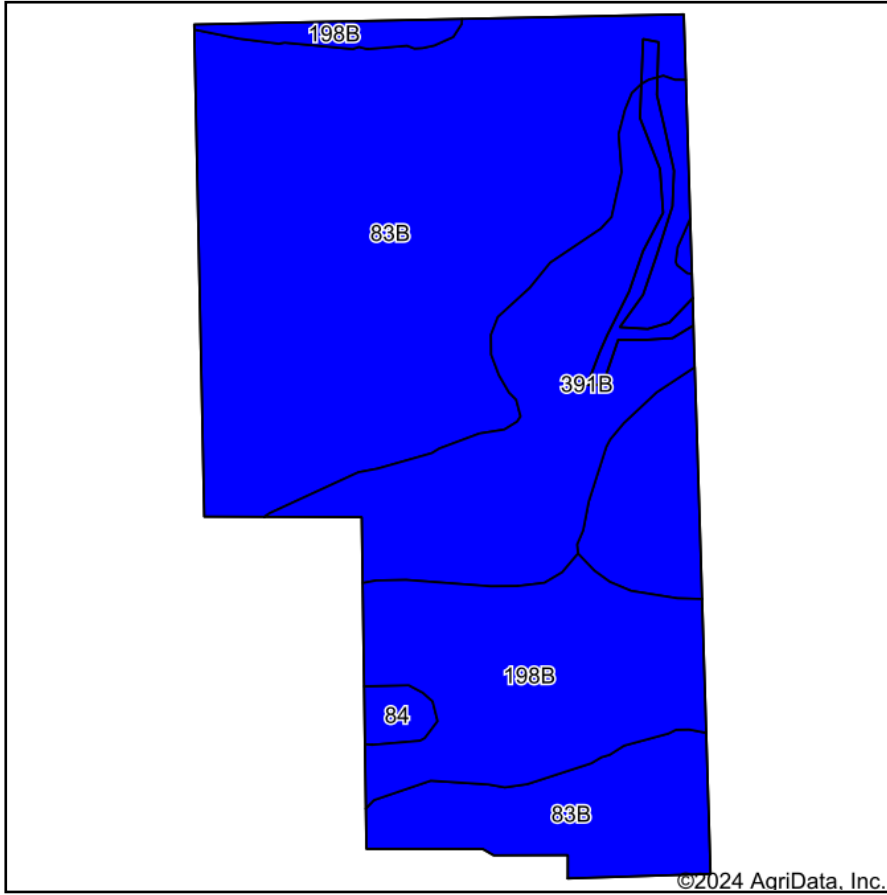
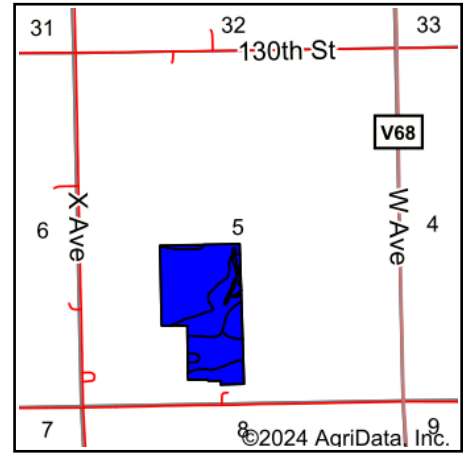


Soils Map - Tract 1



Soils data provided by USDA and NRCS.



State: **Iowa**
 County: **Fayette**
 Location: **5-92N-10W**
 Township: **Fremont**
 Acres: **60.13**
 Date: **12/26/2024**



Maps Provided By:

 CUSTOMIZED ONLINE MAPPING
 © AgriData, Inc. 2023 www.AgriDataInc.com



Area Symbol: IA065, Soil Area Version: 29

Code	Soil Description	Acres	Percent of field	CSR2 Legend	Non-Irr Class *c	*i Corn Bu	*i Soybeans Bu	CSR2**	CSR	*n NCCPI Soybeans
83B	Kenyon loam, 2 to 5 percent slopes	36.21	60.3%		Ile	225.6	65.4	90	85	77
391B	Clyde-Floyd complex, 1 to 4 percent slopes	12.51	20.8%		Ilw	216.0	62.6	87	73	86
198B	Floyd loam, 1 to 4 percent slopes	10.79	17.9%		Ilw	222.4	64.5	89	80	88
84	Clyde clay loam, 0 to 3 percent slopes	0.62	1.0%		Ilw	224.0	65.0	88	75	85
Weighted Average					2.00	223	64.7	89.2	81.5	*n 80.9

**IA has updated the CSR values for each county to CSR2.

*i Yield data provided by the ISPAID Database version 8.1.1 developed by IA State University.

*n: The aggregation method is "Weighted Average using all components"

*c: Using Capabilities Class Dominant Condition Aggregation Method