

# FSA INFO PACKET



A DIVISION OF WHITETAIL  
PROPERTIES REAL ESTATE, LLC

[RANCHANDFARMAUCTIONS.COM](http://RANCHANDFARMAUCTIONS.COM)



United States  
Department of  
Agriculture

## Campbell County, South Dakota



**Common Land Unit**   PLSS

- Cropland
- Tract Boundary

### Wetland Determination Identifiers

- Restricted Use
- ▼ Limited Restrictions
- Exempt from Conservation Compliance Provisions

Unless otherwise noted,  
crops listed below are:  
Non-irrigated  
Intended for Grain  
Corn = Yellow  
Soybeans = Common  
Wheat - HRS or HRW  
Sunflowers = Oil or Non

Producer initial \_\_\_\_\_  
Date \_\_\_\_\_

2025 Program Year  
Map Created December 18, 2024

Farm **3909**

**27-127N-77W-Campbell**

United States Department of Agriculture (USDA) Farm Service Agency (FSA) maps are for FSA Program administration only. This map does not represent a legal survey or reflect actual ownership; rather it depicts the information provided directly from the producer and/or National Agricultural Imagery Program (NAIP) imagery. The producer accepts the data 'as is' and assumes all risks associated with its use. USDA-FSA assumes no responsibility for actual or consequential damage incurred as a result of any user's reliance on this data outside FSA Programs. Wetland identifiers do not represent the size, shape, or specific determination of the area. Refer to your original determination (CPA-026 and attached maps) for exact boundaries and determinations or contact USDA Natural Resources Conservation Service (NRCS).



SOUTH DAKOTA  
CAMPBELL

Form: FSA-156EZ

See Page 3 for non-discriminatory Statements.



United States Department of Agriculture  
Farm Service Agency

Abbreviated 156 Farm Record

FARM : 3909  
Prepared : 1/7/25 11:38 AM CST  
Crop Year : 2025

Operator Name :  
CRP Contract Number(s) : None  
Recon ID : 46-021-2024-15  
Transferred From : None  
ARCPLC G//F Eligibility : Eligible

Farm Land Data									
Farmland	Cropland	DCP Cropland	WBP	EWP	WRP	GRP	Sugarcane	Farm Status	Number Of Tracts
157.85	157.85	157.85	0.00	0.00	0.00	0.00	0.0	Active	2
State Conservation	Other Conservation	Effective DCP Cropland		Double Cropped		CRP	MPL	DCP Ag.Rel. Activity	SOD
0.00	0.00	157.85		0.00		0.00	0.00	0.00	40.80

Crop Election Choice		
ARC Individual	ARC County	Price Loss Coverage
None	None	WHEAT, OATS, CORN, SOYBN

DCP Crop Data				
Crop Name	Base Acres	CCC-505 CRP Reduction Acres	PLC Yield	HIP
Wheat	32.98	0.00	43	
Oats	2.24	0.00	92	
Corn	32.44	0.00	88	
Soybeans	19.41	0.00	34	
TOTAL	87.07	0.00		

NOTES

Tract Number : 500  
Description : SE-27-127-77  
FSA Physical Location : SOUTH DAKOTA/CAMPBELL  
ANSI Physical Location : SOUTH DAKOTA/CAMPBELL  
BIA Unit Range Number :  
HEL Status : NHEL: No agricultural commodity planted on undetermined fields  
Wetland Status : Tract does not contain a wetland  
WL Violations : None  
Owners : DEIBERT FAMILY EXEMPT TRUST  
Other Producers : None  
Recon ID : None

Tract Land Data							
Farm Land	Cropland	DCP Cropland	WBP	EWP	WRP	GRP	Sugarcane
135.54	135.54	135.54	0.00	0.00	0.00	0.00	0.0



Abbreviated 156 Farm Record

Tract 500 Continued ...

State Conservation	Other Conservation	Effective DCP Cropland	Double Cropped	CRP	MPL	DCP Ag. Rel Activity	SOD
0.00	0.00	135.54	0.00	0.00	0.00	0.00	40.80

DCP Crop Data

Crop Name	Base Acres	CCC-505 CRP Reduction Acres	PLC Yield
Wheat	26.38	0.00	43
Oats	1.79	0.00	92
Corn	25.95	0.00	88
Soybeans	15.52	0.00	34
TOTAL	69.64	0.00	

NOTES

Tract Number : 3570

Description : N1/2N1/2SE-27-127-77  
FSA Physical Location : SOUTH DAKOTA/CAMPBELL  
ANSI Physical Location : SOUTH DAKOTA/CAMPBELL  
BIA Unit Range Number :  
HEL Status : NHEL: No agricultural commodity planted on undetermined fields  
Wetland Status : Wetland determinations not complete  
WL Violations : None  
Owners : DEIBERT FAMILY EXEMPT TRUST  
Other Producers : None  
Recon ID : 46-021-2024-13

Tract Land Data

Farm Land	Cropland	DCP Cropland	WBP	EWP	WRP	GRP	Sugarcane
22.31	22.31	22.31	0.00	0.00	0.00	0.00	0.0
State Conservation	Other Conservation	Effective DCP Cropland	Double Cropped	CRP	MPL	DCP Ag. Rel Activity	SOD
0.00	0.00	22.31	0.00	0.00	0.00	0.00	0.00

DCP Crop Data

Crop Name	Base Acres	CCC-505 CRP Reduction Acres	PLC Yield
Wheat	6.60	0.00	43
Oats	0.45	0.00	92
Corn	6.49	0.00	88
Soybeans	3.89	0.00	34
TOTAL	17.43	0.00	

SOUTH DAKOTA  
CAMPBELL

Form: FSA-156EZ



United States Department of Agriculture  
Farm Service Agency

### Abbreviated 156 Farm Record

FARM : 3909

Prepared : 1/7/25 11:38 AM CST

Crop Year : 2025

Tract 3570 Continued ...

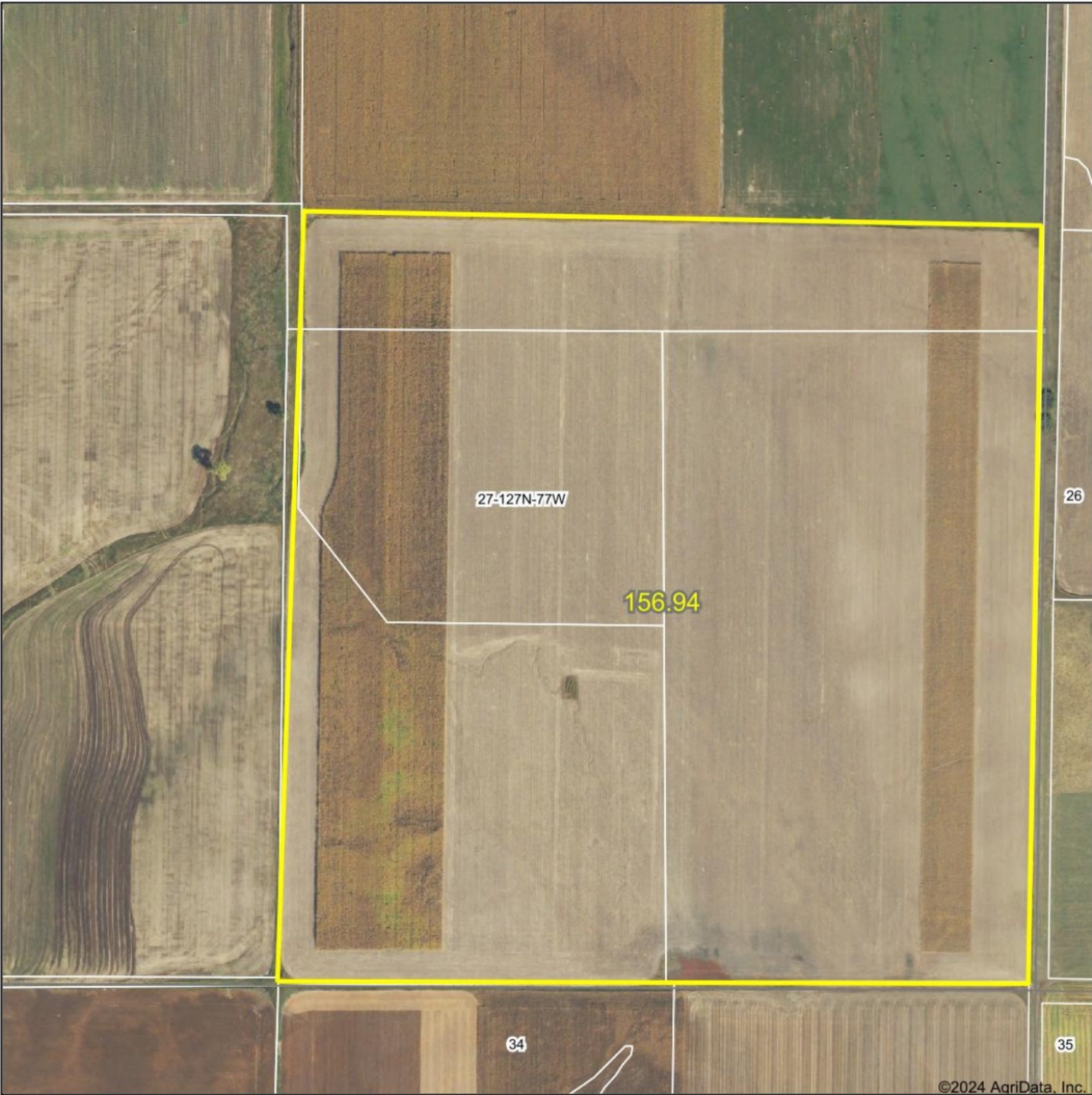
#### NOTES

*In accordance with Federal civil rights law and U.S. Department of Agriculture (USDA) civil rights regulations and policies, the USDA, its Agencies, offices, and employees, and institutions participating in or administering USDA programs are prohibited from discriminating based on race, color, national origin, religion, sex, gender identity (including gender expression), sexual orientation, disability, age, marital status, family/parental status, income derived from a public assistance program, political beliefs, or reprisal or retaliation for prior civil rights activity, in any program or activity conducted or funded by USDA (not all bases apply to all programs). Remedies and complaint filing deadlines vary by program or incident.*

*Persons with disabilities who require alternative means of communication for program information (e.g., Braille, large print, audiotape, American Sign Language, etc.) should contact the responsible Agency or USDA's TARGET Center at (202) 720-2600 (voice and TTY) or contact USDA through the Federal Relay Service at (800) 877-8339. Additionally, program information may be made available in languages other than English.*

*To file a program discrimination complaint, complete the USDA Program Discrimination Complaint Form, AD-3027, found online at [http://www.ascr.usda.gov/complaint\\_filing\\_cust.html](http://www.ascr.usda.gov/complaint_filing_cust.html) and at any USDA office or write a letter addressed to USDA and provide in the letter all of the information requested in the form. To request a copy of the complaint form, call (866) 632-9992. Submit your completed form or letter to USDA by: (1) mail: U.S. Department of Agriculture Office of the Assistant Secretary for Civil Rights 1400 Independence Avenue, SW Washington, D.C. 20250-9410; (2) fax: (202) 690-7442; or (3) e-mail: [program.intake@usda.gov](mailto:program.intake@usda.gov). USDA is an equal opportunity provider, employer, and lender.*

Aerial Map



©2024 AgriData, Inc.

Boundary Center: 45° 47.1605', -100° 8.1947'



**27-127N-77W**  
**Campbell County**  
**South Dakota**



12/20/2024



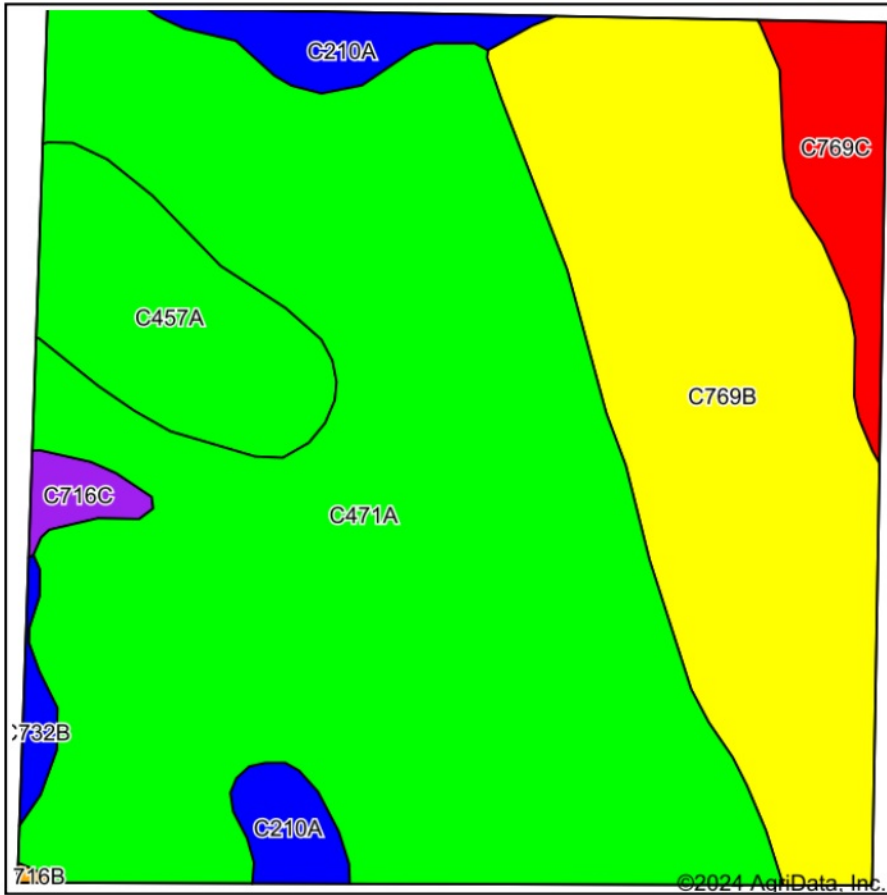
**WHITETAIL PROPERTIES REAL ESTATE**  
HUNTING | RANCH | FARM | TIMBER

Maps Provided By:  
 **surety**<sup>®</sup>  
CUSTOMIZED ONLINE MAPPING  
© AgriData, Inc. 2023      www.AgriDataInc.com

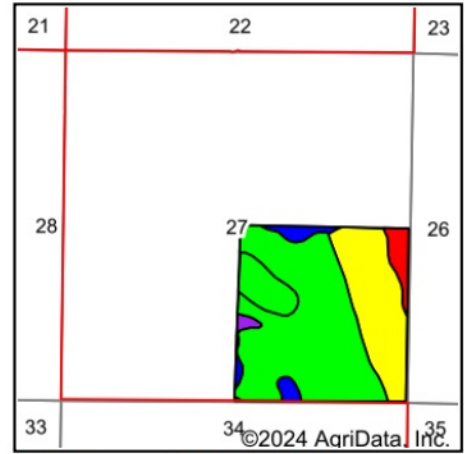
Field borders provided by Farm Service Agency as of 5/21/2008.



# Soils Map



Soils data provided by USDA and NRCS.



State: **South Dakota**  
 County: **Campbell**  
 Location: **27-127N-77W**  
 Township: **North Campbell**  
 Acres: **156.94**  
 Date: **12/20/2024**



WHITETAIL PROPERTIES REAL ESTATE  
 HUNTING | RANCH | FARM | TIMBER

Maps Provided By:



© AgriData, Inc. 2023

www.AgriDataInc.com

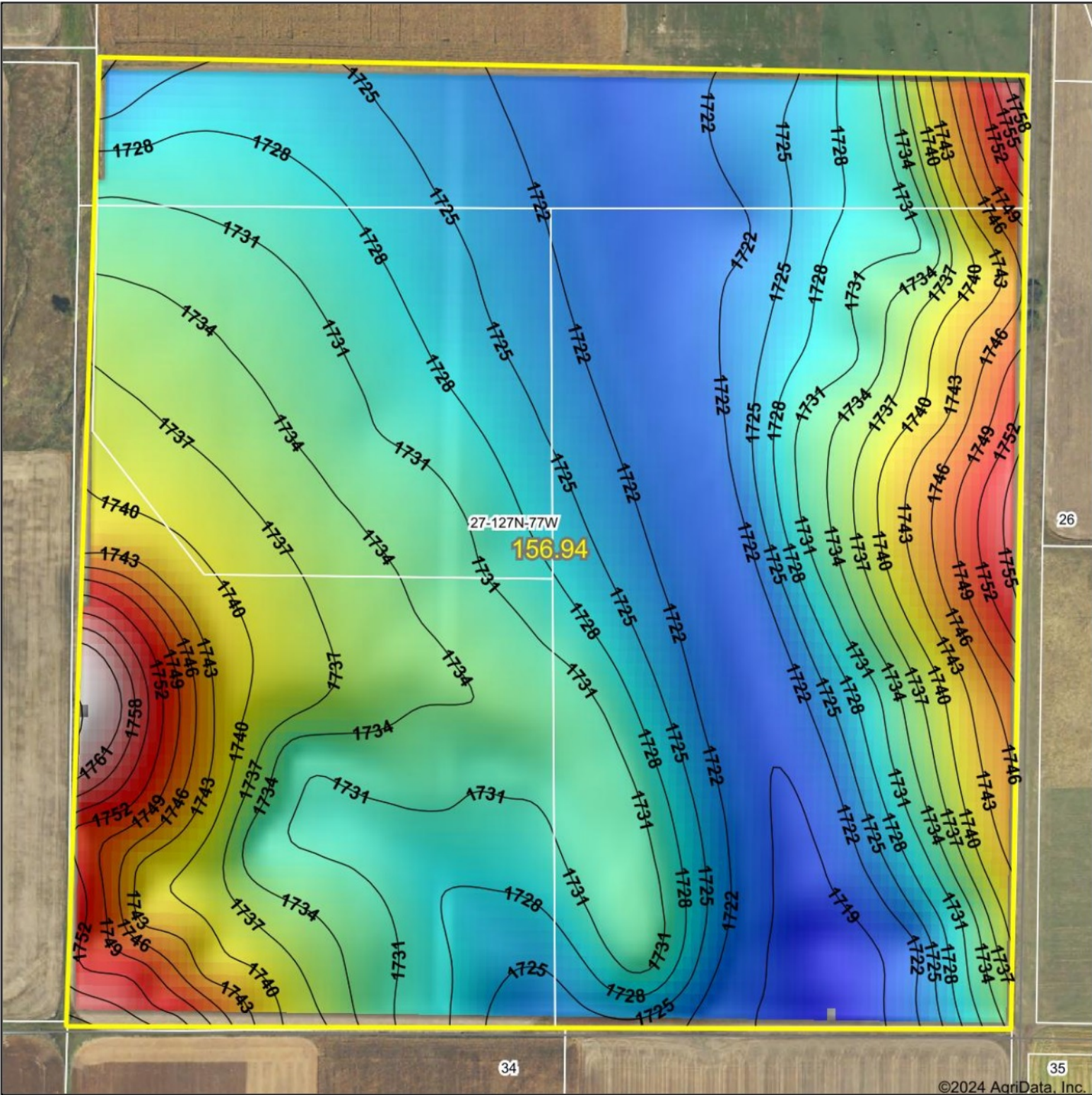


Area Symbol: SD021, Soil Area Version: 30

Code	Soil Description	Acres	Percent of field	PI Legend	Non-Irr Class *c	Productivity Index
C471A	Graill silty clay loam, 0 to 2 percent slopes	89.60	57.0%		IIc	95
C769B	Tally fine sandy loam, 2 to 6 percent slopes	41.09	26.2%		IIIe	63
C457A	Grassna silt loam, 0 to 2 percent slopes	11.77	7.5%		IIc	98
C769C	Tally fine sandy loam, 6 to 9 percent slopes	6.10	3.9%		IVe	49
C210A	Williams-Bowbells loams, 0 to 3 percent slopes	5.77	3.7%		IIc	86
C716C	Bryant-Sutley silt loams, 6 to 9 percent slopes	1.49	0.9%		IIIe	60
C732B	Bryant silt loam, 2 to 6 percent slopes	1.03	0.7%		Ile	83
C716B	Bryant-Sutley silt loams, 2 to 6 percent slopes	0.09	0.1%		Ile	76
Weighted Average					2.35	84.3

\*c: Using Capabilities Class Dominant Condition Aggregation Method

Topography Hillshade



©2024 AgriData, Inc.

LowElevationHigh

Source: USGS 10 meter dem

Interval(ft): 3

Min: 1,716.2

Max: 1,763.8

Range: 47.6

Average: 1,731.3

Standard Deviation: 8.79 ft

0ft430ft859ft

12/20/2024

27-127N-77W

Campbell County

South Dakota

Boundary Center: 45° 47.1605', -100° 8.1947'

WHITETAIL PROPERTIES REAL ESTATE  
HUNTING & RANCH 3 FARM 1 TIMBER  
Maps Provided By:  
  
CUSTOMIZED ONLINE MAPPING  
© AgriData, Inc. 2023 www.AgriDataInc.com

Field borders provided by Farm Service Agency as of 5/21/2008.