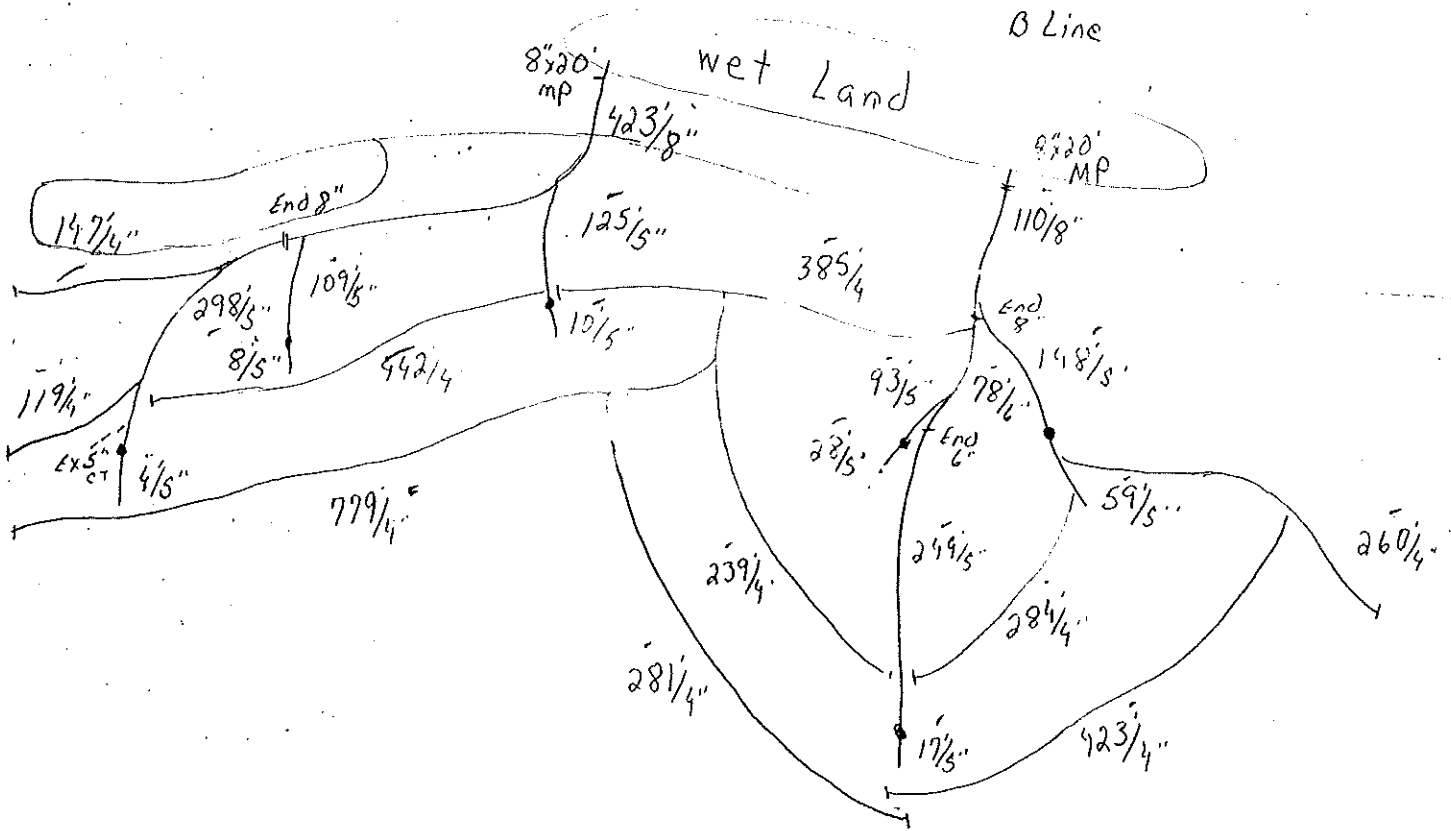
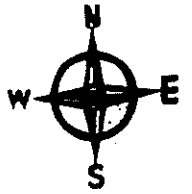


Mather & Sons, Inc. 2811 E Ave PO Box 98 Coin, IA 51636

Phil Mather Ph: 712-534-2528 or Cell # 712-350-0135

Landowner 517 Farms Summer CS Date July 23, 2021  
A Line

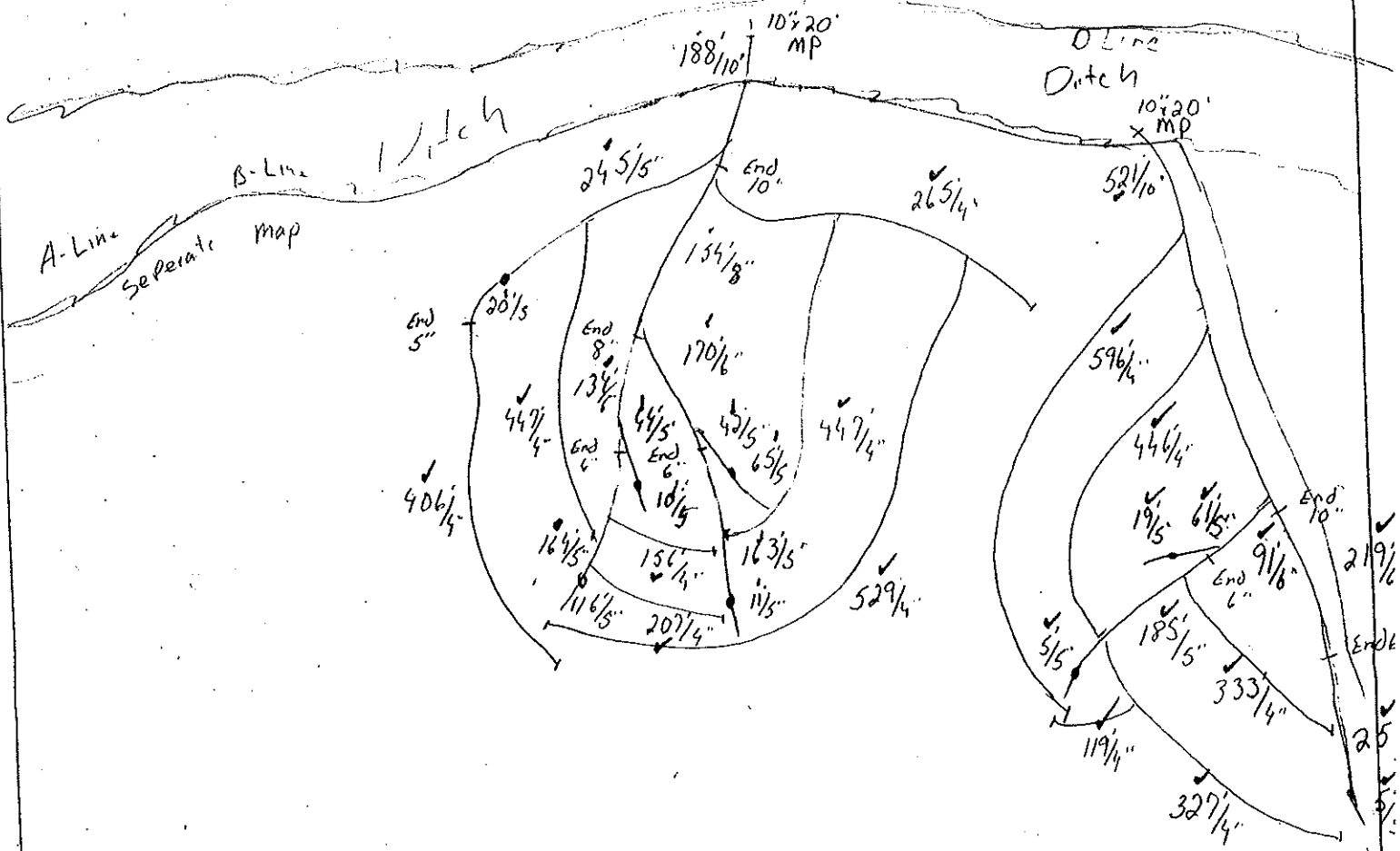


Mather & Sons, Inc. 2811 E Ave PO Box 98 Coin, IA 51636

Phil Mather Ph: 712-534-2528 or Cell # 712-350-0135



Landowner SH Farms Summer CS Date July 23, 2021  
C Line



MATHER & SONS, INC. 712-534-2528 Coin, IA

Landowner: SH Farms Summer CS Date: July 23, 2021

	12"	10"	8"	6"	5"	5" SEEP	4"
A Line			423'		298'	4'	147' - 119' -
					109' -	8' -	
					125' -	10' -	442' -
B Line			110' -	78' -	249'	17' -	385' - 239' - 779' - 281' -
					93' -	28' -	
					148' -	59' -	284' - 260' - 423' -
C Line		188' -	154' -	134' -	164' -	16' -	156' ✓ 207' ✓
					245' -	20' -	406' ✓ 447' ✓
				170' -	163' -	11' -	265' ✓
					44' -	10' -	529' ✓ 447' ✓
					42' -	65' -	
D Line		521' ✓		219' ✓	255' ✓	5' ✓	596' ✓ 446' ✓
				91' ✓	185' ✓	5' ✓	333' ✓ 327' ✓
					61' ✓	19' ✓	119' ✓
TOTAL		709	687	692	2181	277'	7639'

2" 10x20 outlets

2" 8x20 outlets

13-4" intakes

32' JCK

Back Hoe? 1 hr dig through rocks