

Alamo Canyon Hunting Ranch

2,090± acres

| \$3,600,000

| Hondo, New Mexico

| Lincoln County



Chas. S. Middleton

— AND SON LLC —

FARM - RANCH SALES AND APPRAISALS

Est. 1920

Alamo Canyon Hunting Ranch

A True Western Legacy

Nestled in the foothills of the Sacramento Mountains between Sierra Blanca and Capitan lies a hunting ranch of mythic proportions—a place where the spirit of the Old West is still very much alive. Alamo Canyon Hunting Ranch encompasses 2,090± pristine acres, a vast, untamed high desert ranch that elk, mule deer, Aoudad, lion, bear, turkey, quail, fox, and coyotes call home amongst the canyons and craggy ridges. This is a land that calls to the adventurer, the hunter, the one who seeks both solitude and the thrill of the chase.

Alamo Canyon is not merely a ranch; it's a testament to the enduring frontier spirit. The ranch is secluded, far removed from the clamor of modern life. It is a place where time seems to stand still, where the land and the wildlife are as they were when the first pioneers ventured westward.







A Wilderness Untamed

The ranch is a mosaic of diverse terrains, from rolling hills blanketed in native grasses to rugged canyons carved by ancient waters. The landscape is dotted with junipers and piñon pines, their twisted trunks bearing witness to the relentless forces of nature. Vast expanses of open land provide breathtaking views of the Sacramento Mountains, their jagged peaks standing sentinel over the ranch.

Wildlife roam freely across these acres, their presence a reminder of the wild abundance that once defined the American West.

For the hunter, there is no greater challenge than tracking a majestic bull elk through the dense brush or spotting a wily trophy mule deer amid the rocky outcroppings. The Barbary sheep, with their sweeping horns and agile grace, offer a pursuit that is both demanding and exhilarating.

But the game on Alamo Canyon does not stop there. Black bears prowl the shadows of the ridges, their powerful forms a humbling sight for those fortunate enough to catch a glimpse. Mountain lions, the elusive ghosts of the high desert, stalk silently through the juniper forests. Foxes and coyotes add to the symphony of the night, their cries echoing across the canyons. Wild turkeys strut through the sagebrush, their feathers glistening in the morning sun, while quail flit and scatter at the slightest sound.





Water: The Lifeblood of the Ranch

Water is the true treasure of the high desert, and at Alamo Canyon, it has been harnessed with both ingenuity and respect for the land. Two wells tap into the hidden aquifers deep beneath the earth, one reaching down Approximately 150 feet, drawing forth the cool, clear water that sustains life on the ranch. This precious resource is stored in two tanks, one holding 6,000 gallons and the other 2,500 gallons, perched high on the ridges, a mile and a half from the wells themselves.

Once these tanks are filled, the water flows back down through an intricate network of gravity-fed lines, reaching eight tire drinkers, each with a capacity of 700 to 750 gallons. These drinkers, strategically placed throughout the ranch, provide essential hydration for the diverse wildlife that call this place home. In addition to the tire drinkers, there are smaller bird drinkers scattered across the property, ensuring that even the smallest of the ranch's inhabitants have access to water.

Three 2,000-pound feeders stand sentinel over the ranch, surrounded by sturdy corrals, ready to sustain the game during the leaner months. Four smaller 200-pound feeders and two spinner feeders add to the bounty, distributing nourishment across the land. The feeders and drinkers are more than just conveniences; they are a testament to the stewardship that the ranch embodies, a commitment to maintaining the delicate balance between man and nature.





A Landscape Etched by Hand and Time

Over 36,000 feet of inch-and-a-quarter poly pipe snake across the property, a lifeline connecting the scattered drinkers and feeders to the central tanks. It is a feat of engineering that speaks to the dedication of those who have worked this land, carving out a sustainable habitat in a harsh and unforgiving environment.

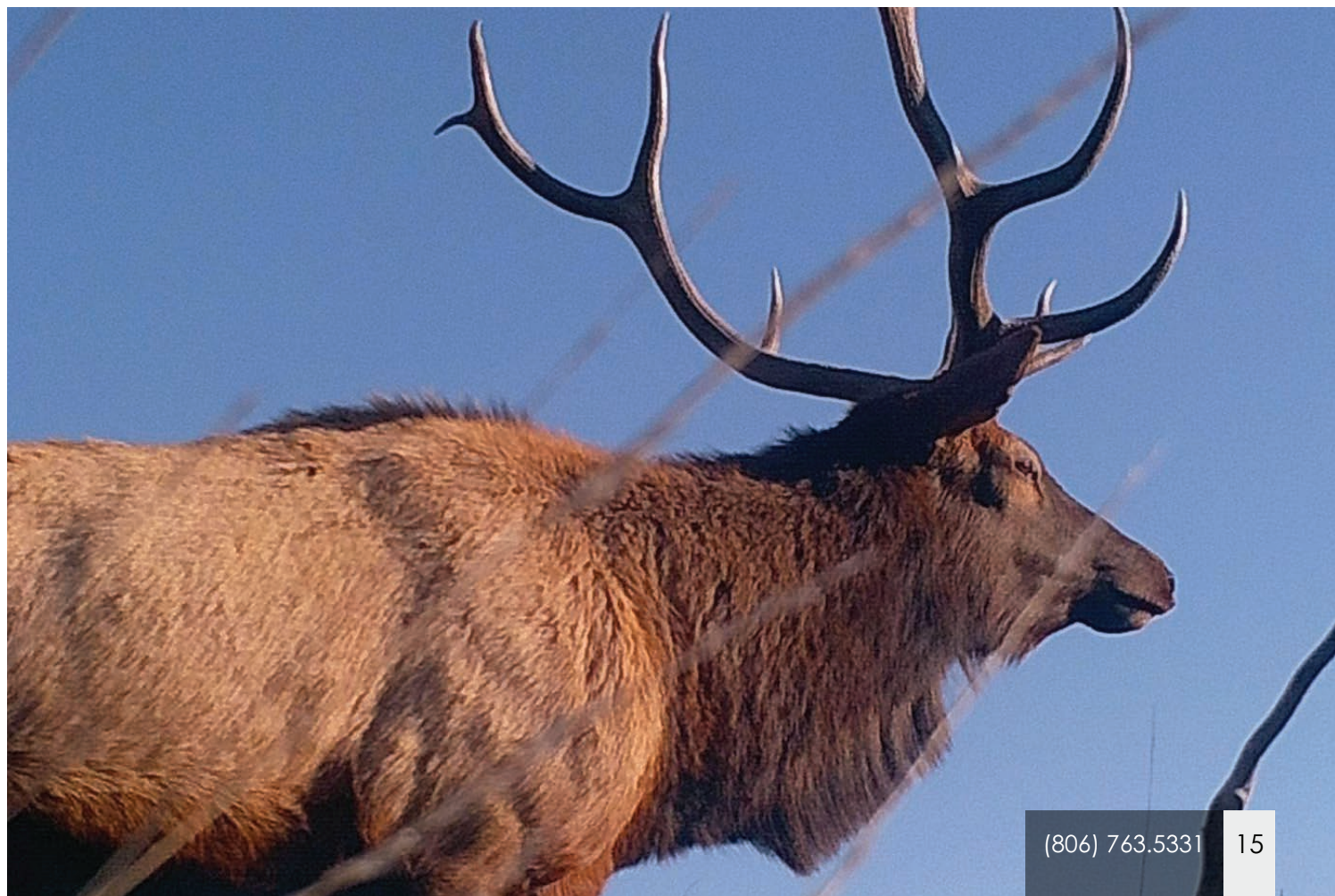
But the ranch's infrastructure does not end with water. More than 20 miles of trails wind through the property, carved into the rugged terrain with care and precision. These trails are a gateway to the ranch's many hidden corners, leading hunters to the perfect blind, or explorers to a secluded vista where the vastness of the desert stretches out before them.

Six deer blinds, each designed for two-person occupancy, are strategically placed throughout the ranch. These blinds offer unparalleled views of the surrounding terrain, providing both concealment and comfort for those who seek the thrill of the hunt. From these perches, hunters can watch as the sun rises over the Sacramento Mountains, casting long shadows across the land, or wait patiently as dusk settles, when the wildlife stirs from the brush.



















A Legacy of Water and Stone

Water is not only brought to the land by modern means; it springs naturally from the earth as well. A rock tank, fed by a reliable spring, has been a source of life on the ranch for generations. In the last five years, it has only run dry once—a testament to its dependability. Nearby, a man-made dirt tank adds to the ranch's water resources, capable of being filled from the same lines that feed the main storage tanks. These tanks are more than just water sources; they are oases in the desert, places where life gathers, drawn by the promise of sustenance.



The Soul of the Ranch

Alamo Canyon is more than just a place; it is an experience, a step back into a time when the West was still wild, and man's relationship with the land was defined by respect and resilience. It is a place where the modern and the ancient coexist, where the call of a coyote breaks the quiet of the night.

To own a piece of Alamo Canyon is to own a piece of the West itself—a land where legends are made, and the spirit of adventure is ever present. It is a place where the hunter can test his skill against some of the most challenging game in North America, where the naturalist can revel in the beauty and diversity of the high desert, and where the rancher can find solace in the stewardship of a truly remarkable property.



Location

The Alamo Canyon Hunting Ranch is located 5± road miles from Hondo, New Mexico, in Southeast New Mexico. The ranch is almost equally distant between Roswell and Ruidoso, New Mexico. These towns include medical services, educational services, shopping, entertainment, and restaurants. The ranch itself is accessed via county-maintained caliche and gravel Alamo Canyon Road.



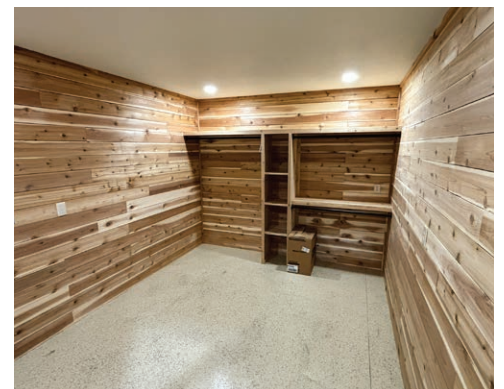




The Lodge

The current owners of the ranch embarked on the construction of a magnificent steel lodge that assures minimal annual maintenance and provides all the luxuries desired for a home and entertainment showplace. The entrance to the headquarters area alone provides the owner/visitor a clear testament to the pride of ownership exhibited on the entire property.

The pre-engineered steel framing of the lodge encompasses a living quarters consisting of approximately 4,000± square feet. The living area includes 4 bedrooms, 5 baths, a large full kitchen/dining area, a full-service laundry room, and a large game room. There is an additional 2,400± heated square feet of entertainment and equipment storage area that includes a large walk-in gun safe work area and tool storage area for performing maintenance needs of the equipment used on the ranch. Rounding out the lodge are portals for enjoying the serene sounds of wildlife, along with a full outdoor kitchen and entertainment area that can be enclosed for any type of inclement weather, including high winds. The lodge really is a tremendous structural improvement, complimenting the ranch and its many uses.







A Call to the Adventurous Heart

For those who long for a life less ordinary, for those who hear the call of the wild places, Alamo Canyon Hunting Ranch is a sanctuary. It is a place where the sky is vast, the air is pure, and the land is as untamed as it was in the days of the frontier. It is a place where the hunter and the hunted move in a timeless dance, where the whisper of the wind through the piñons carries the echoes of a thousand stories.

This is Alamo Canyon—where the West is still wild, and the spirit of adventure is alive and well. This ranch is offered at \$3,600,000 turnkey meaning all furnishings and equipment at the ranch stay. Real estate taxes are approximately \$5,300/year.

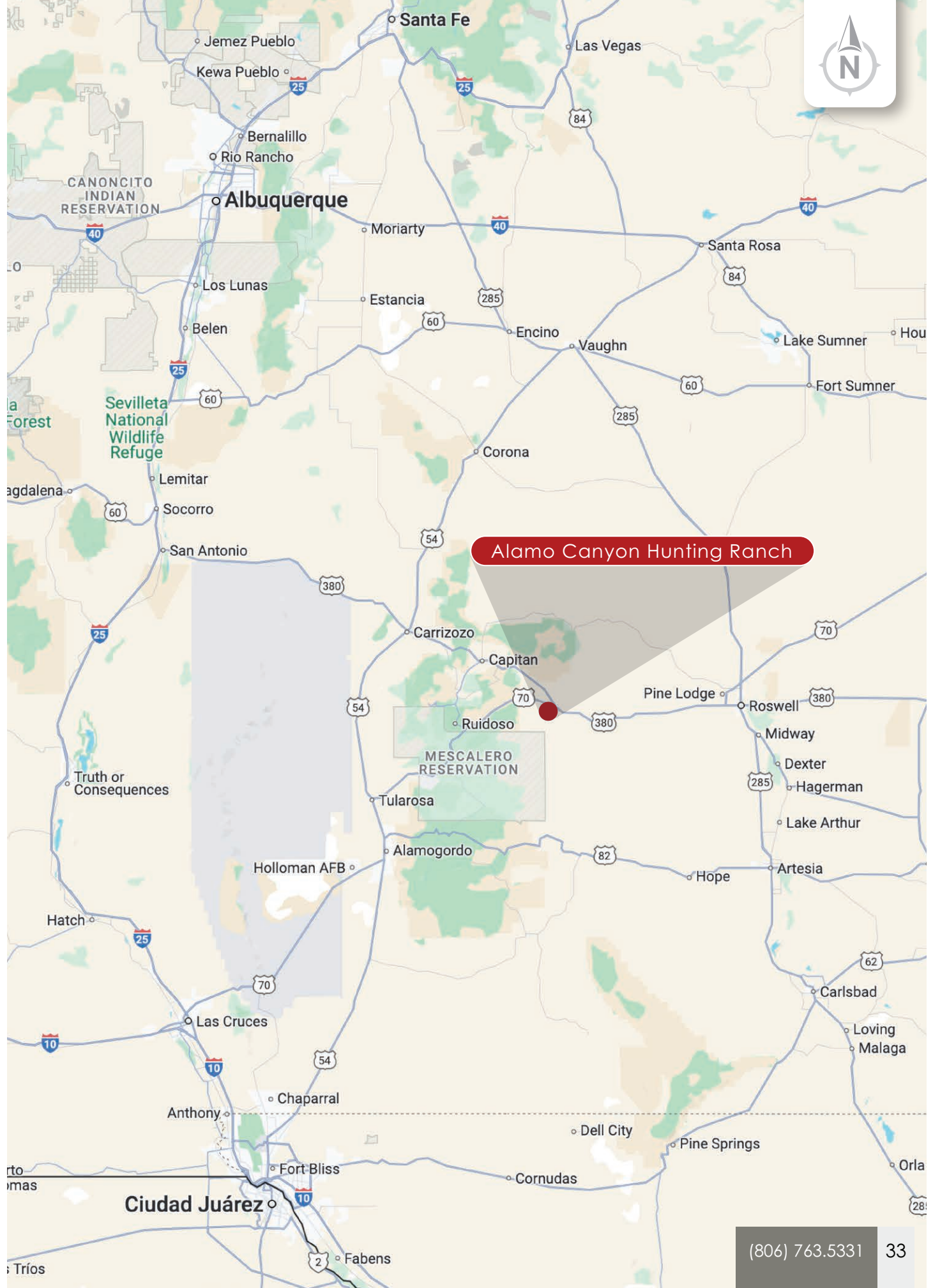
Please call for additional information or to schedule a showing.

Jim Welles
(505) 967.6562

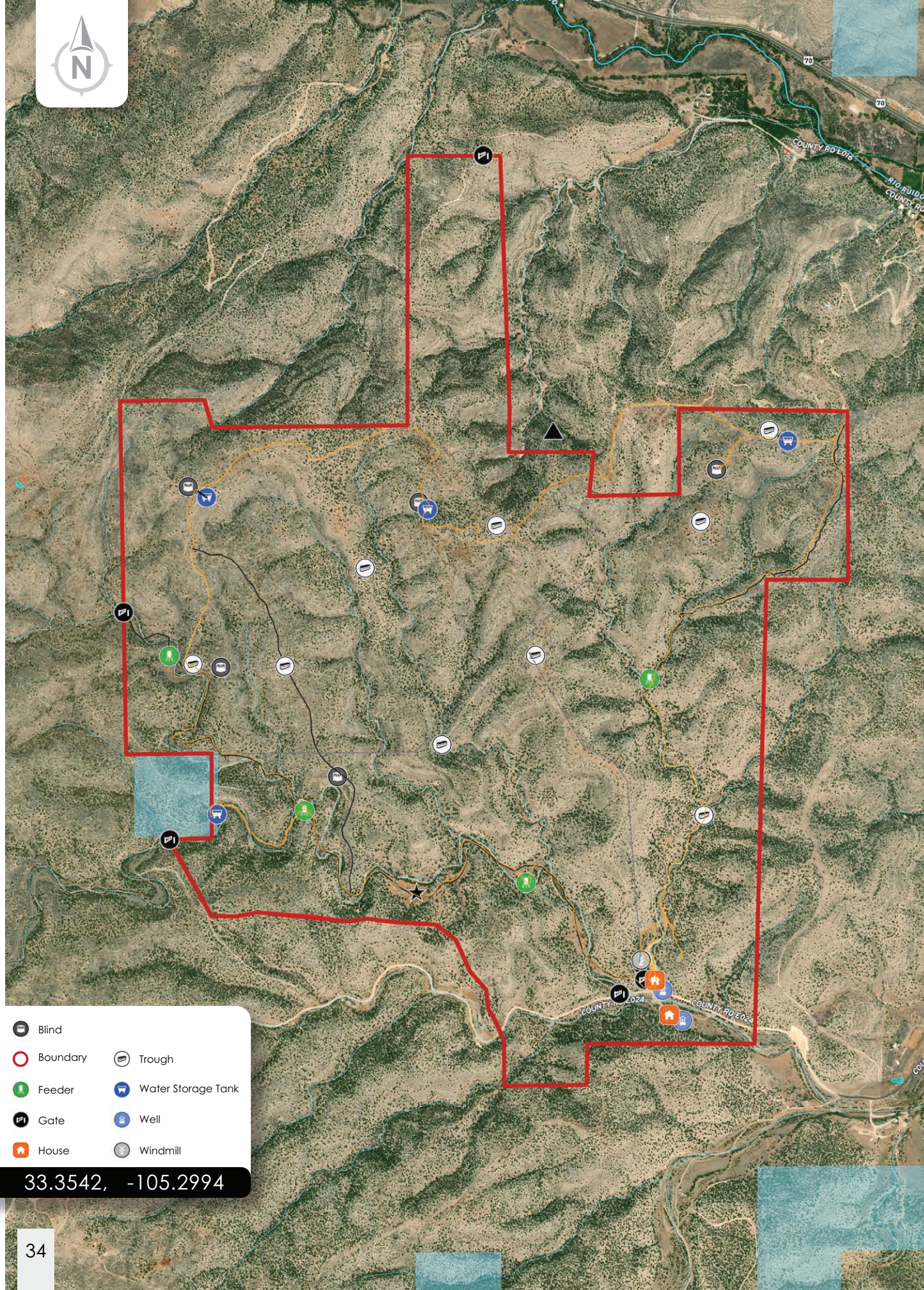
Dwain Nunez
(505) 263.7868





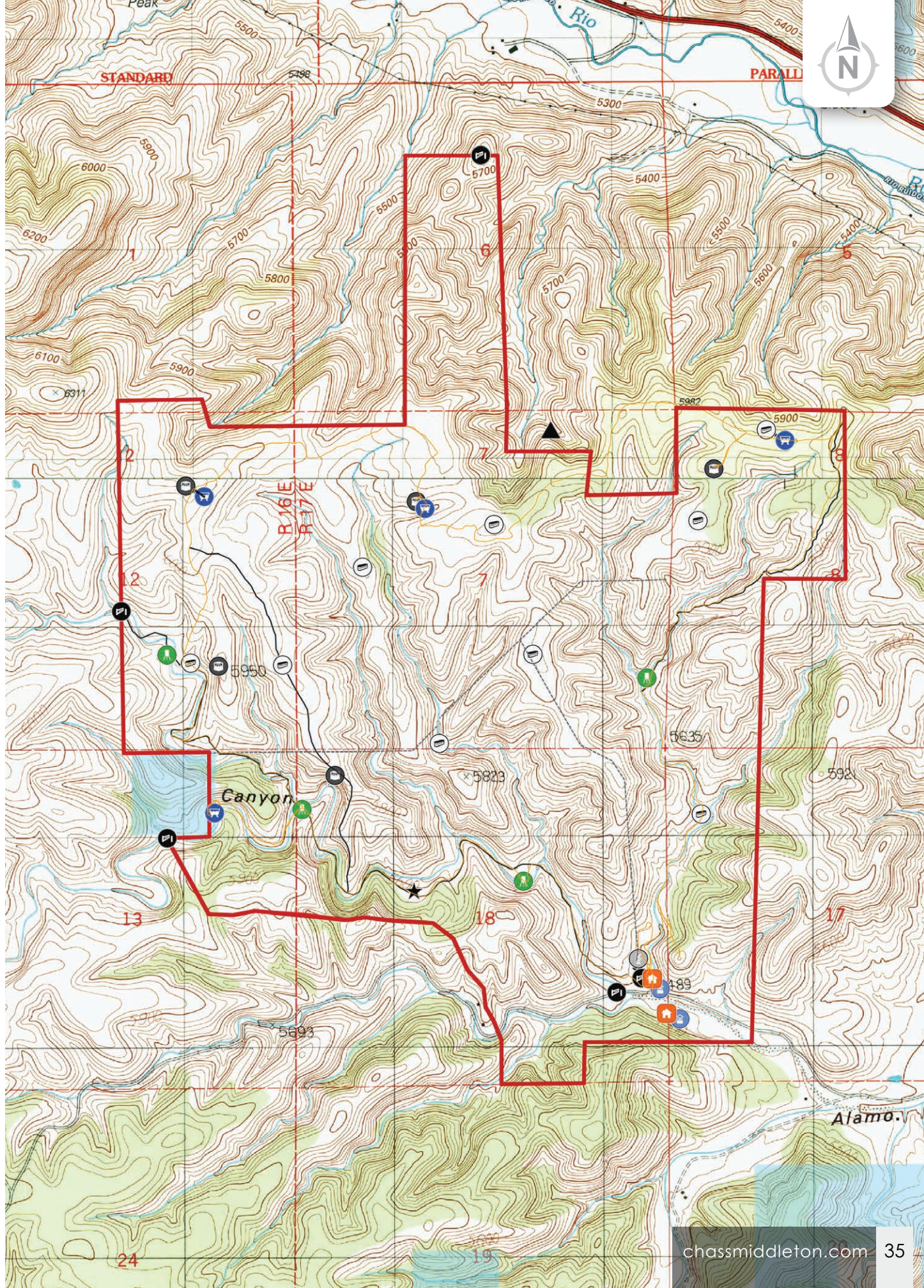


Alamo Canyon Hunting Ranch



- Blind
- Boundary
- Feeder
- Gate
- House
- Trough
- Water Storage Tank
- Well
- Windmill

33.3542, -105.2994



Chas. S. Middleton

— AND SON LLC —

FARM - RANCH SALES AND APPRAISALS

Est. 1920

James (Jim) Welles

Real Estate Associate Broker • NM

(505) 967.6562
jim@csmansion.com

Dwain Nunez

Real Estate Associate Broker • NM

(505) 263.7868
dwain@csmansion.com



(806) 763.5331

chasmiddleton.com



YouTube

