



T R O P H Y
PROPERTIES AND AUCTION
LAND | RECREATIONAL | RESIDENTIAL

40± Acre Versatile Use Property for Sale - Stone County

www.TrophyPA.com • (855) 573-5263 • leads@trophyapa.com



PROPERTY ADDRESS:

00 Hwy M
Billings, MO 65610

PRICE: \$319,900

ACRES: 40

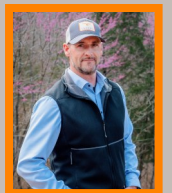
COUNTY: Stone

PROPERTY HIGHLIGHTS:

- Hwy M Frontage
- Wet weather creek
- Pond
- Fenced & partial cross fencing
- Private well
- Electricity
- Gently rolling hills
- Mature timber
- Breathtaking views
- Possible homesite locations
- Pasture/grassland
- Livestock waterers
- Seller is willing to subdivide (see aerial map & tract pricing)

PROPERTY DESCRIPTION:

Nestled in the heart of the Ozarks, this breathtaking property offers endless possibilities for farming, hunting, developing, or building your dream home. Conveniently located just minutes from Springfield, Branson, and Republic, this property provides the perfect balance of privacy and accessibility. Features scenic views, rolling hills and picturesque landscapes ideal for stunning homesites. Water and electric on site ready to support your vision. There is a wet weather creek that runs throughout the property, a stunning little pond as well as livestock waterers throughout. A perfect mix of grassland and mature trees, perfect for grazing, farming or recreational use. Property is fenced and some cross fencing making it ready for livestock or dividing for multiple purposes. Abundant



PRESENTED BY:

RASHELL BURKE

Land & Home Specialist

M: (660) 723-0414

P: (855) 573-5263 x774

E: rburke@trophyapa.com

WAYLON MARTIN

Land Broker

M: (417) 410-5964

P: (855) 573-5263 x712

E: wmartin@trophyapa.com

Trophy Properties and Auction

640 Cepi Drive

Suite 100

Chesterfield, MO 63005

www.Trophyapa.com

leads@trophyapa.com

40± Acre Versatile Use Property for Sale - Stone County

www.TrophyPA.com • (855) 573-5263 • leads@trophyPA.com

wildlife makes this a hunters dream. Convenient frontage on Hwy M ensures easy access and excellent development potential. Its rolling hills, stunning views, and natural resources make it perfect for a private homestead, thriving farm, or lucrative development project. A prime location close to amenities gives you the best of both worlds, peaceful Ozark living with urban conveniences close at hand.



Broker does not guarantee the accuracy of sq. ft., lot size, or other information, buyer is advised to independently verify the accuracy of information through personal inspection and with appropriate professionals

40± Acre Versatile Use Property for Sale - Stone County

www.TrophyPA.com • (855) 573-5263 • leads@trophyPA.com

Tract	Acreage	Price
B	20±	\$174,900
D	20±	\$154,900



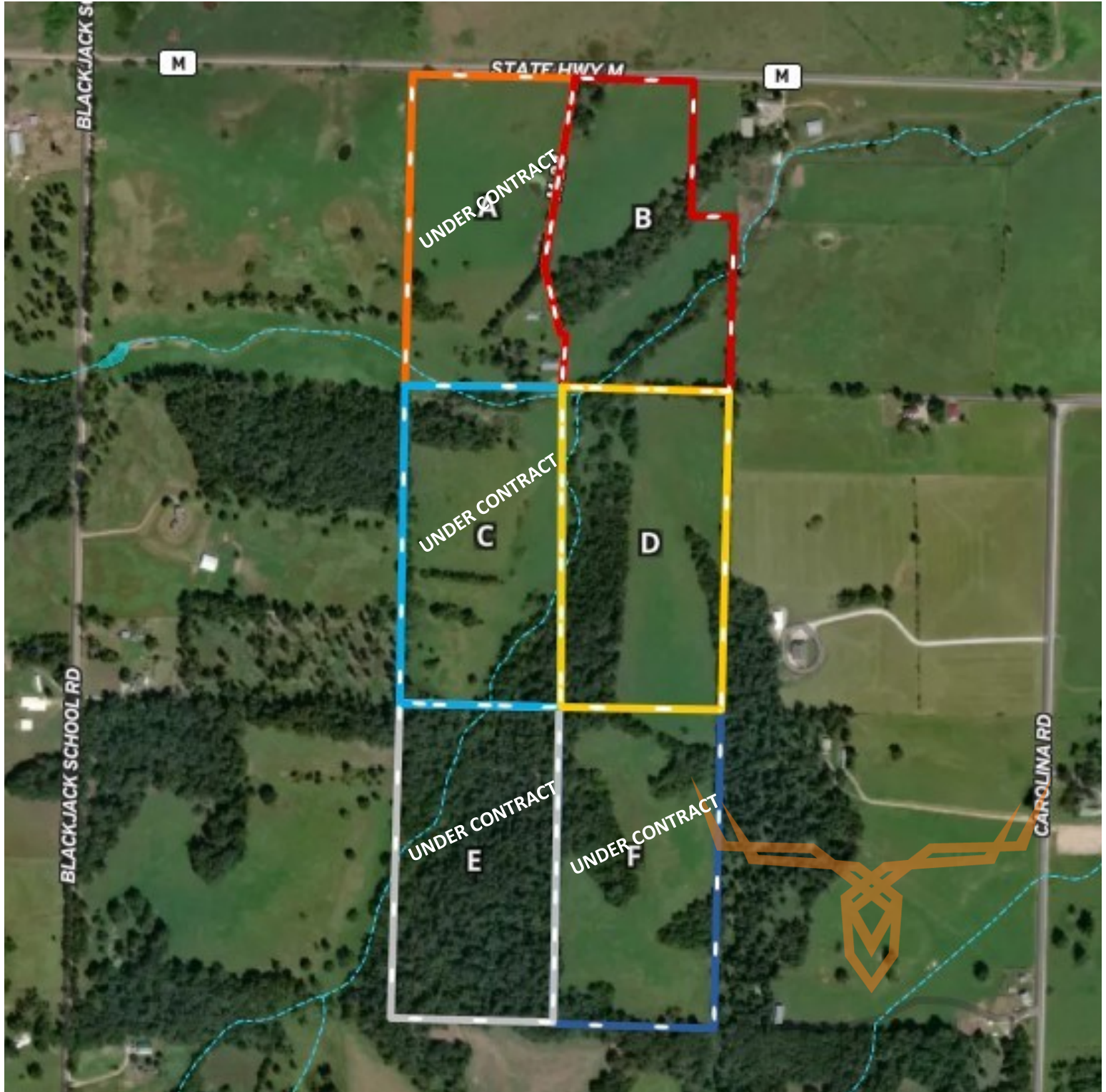
Broker does not guarantee the accuracy of sq. ft., lot size, or other information, buyer is advised to independently verify the accuracy of information through personal inspection and with appropriate professionals



40± Acre Versatile Use Property for Sale - Stone County

T R O P H Y
PROPERTIES AND AUCTION
LAND | RECREATIONAL | RESIDENTIAL

www.TrophyPA.com • (855) 573-5263 • leads@trophyPA.com



Broker does not guarantee the accuracy of sq. ft., lot size, or other information, buyer is advised to independently verify the accuracy of information through personal