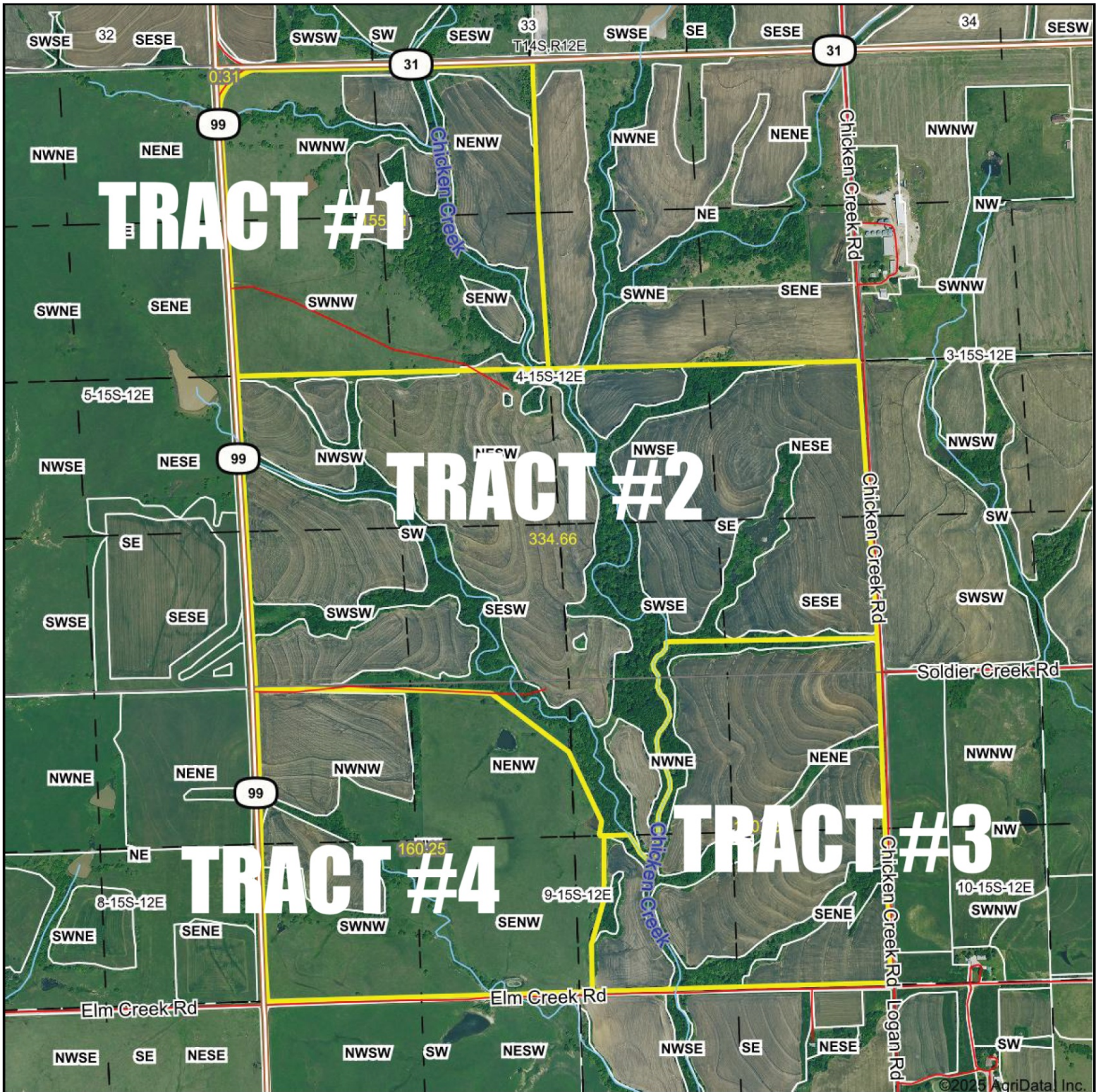


Aerial Map



Boundary Center: 38° 46' 18.41, -96° 5' 6.12

0ft 1313ft 2626ft

4-15S-12E

Wabaunsee County
Kansas

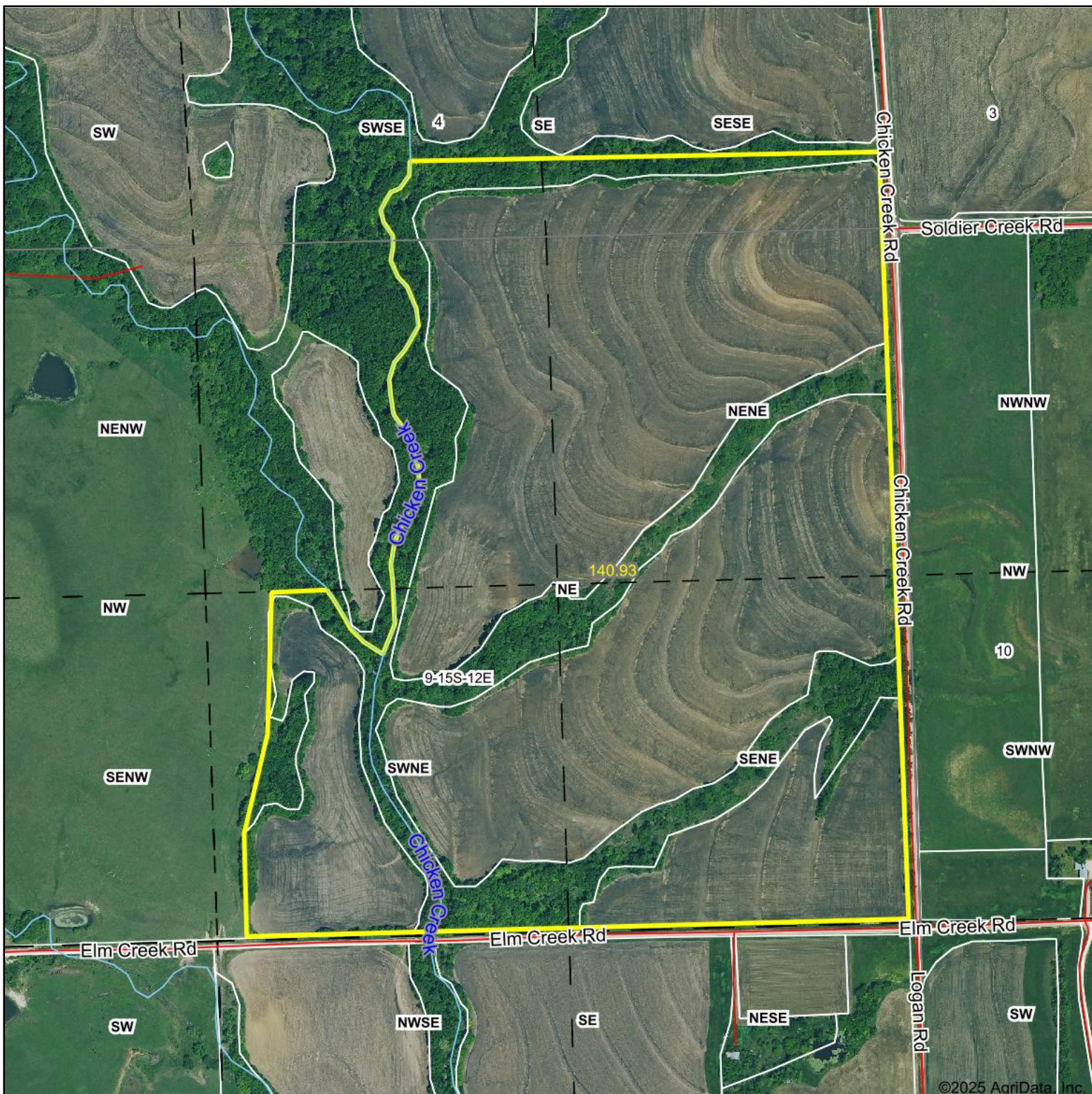


Maps Provided By:
surety
CUSTOMIZED ONLINE MAPPING
© AgriData, Inc. 2023 www.AgriDataInc.com

1/20/2025

Field borders provided by Farm Service Agency as of 5/21/2008.

Aerial Map



Griffin
Real Estate & Auction

Boundary Center: 38° 45' 53.94, -96° 4' 47.73

A horizontal number line with three tick marks. The first tick mark is labeled '0ft', the second is labeled '591ft', and the third is labeled '1182ft'.

9-15S-12E

Wabaunsee County Kansas



1/20/2025

Maps Provided By:



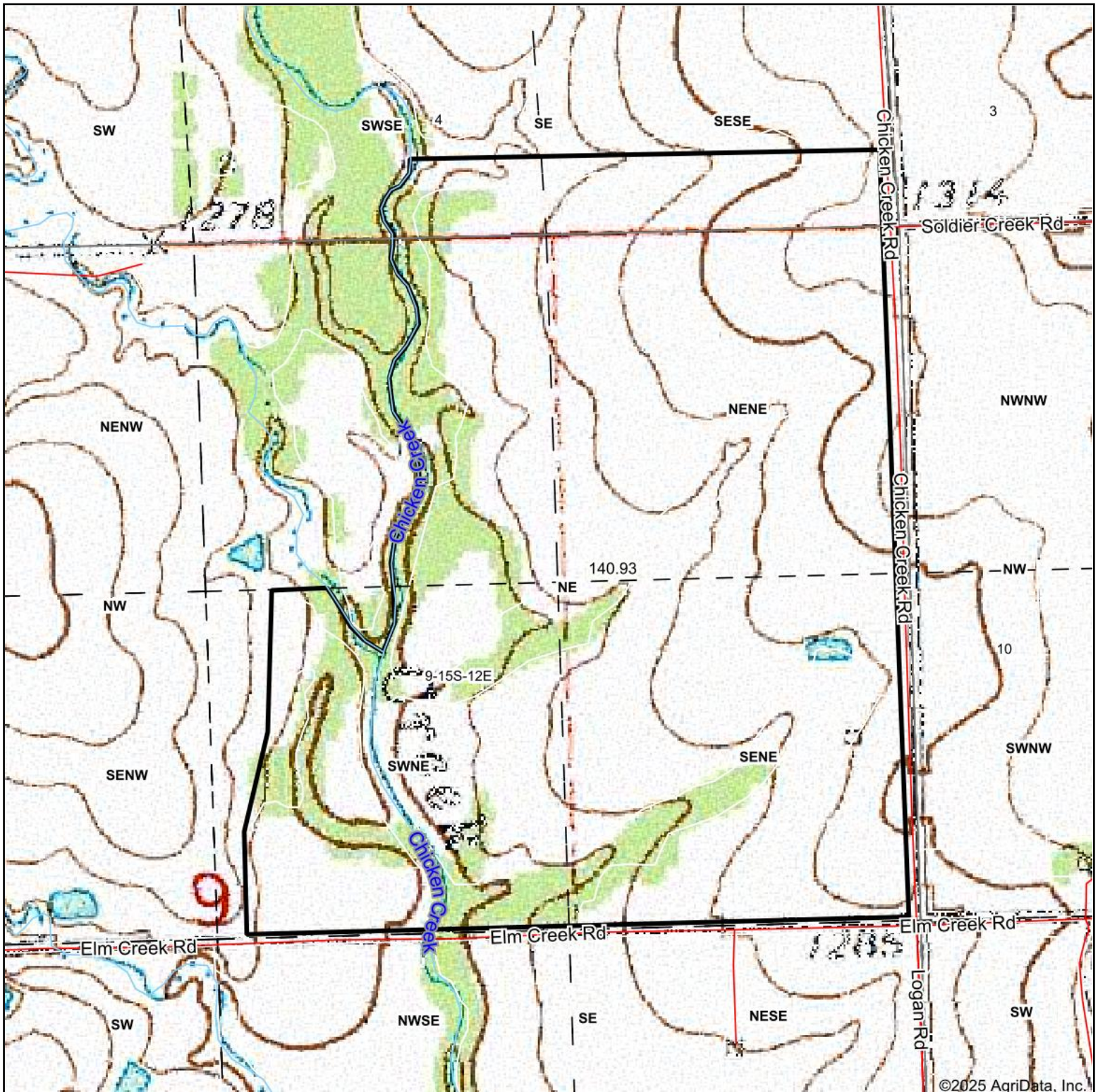
surety®
CUSTOMIZED ONLINE MAPPING

© AgriData, Inc. 2023

www.AgriDataInc.com

Field borders provided by Farm Service Agency as of 5/21/2008.

Topography Map



©2025 AgriData, Inc.



Maps Provided By:



© AgriData, Inc. 2023

www.AgriDataInc.com

Map Center: 38° 45' 53.69, -96° 4' 48.58

0ft 591ft 1182ft

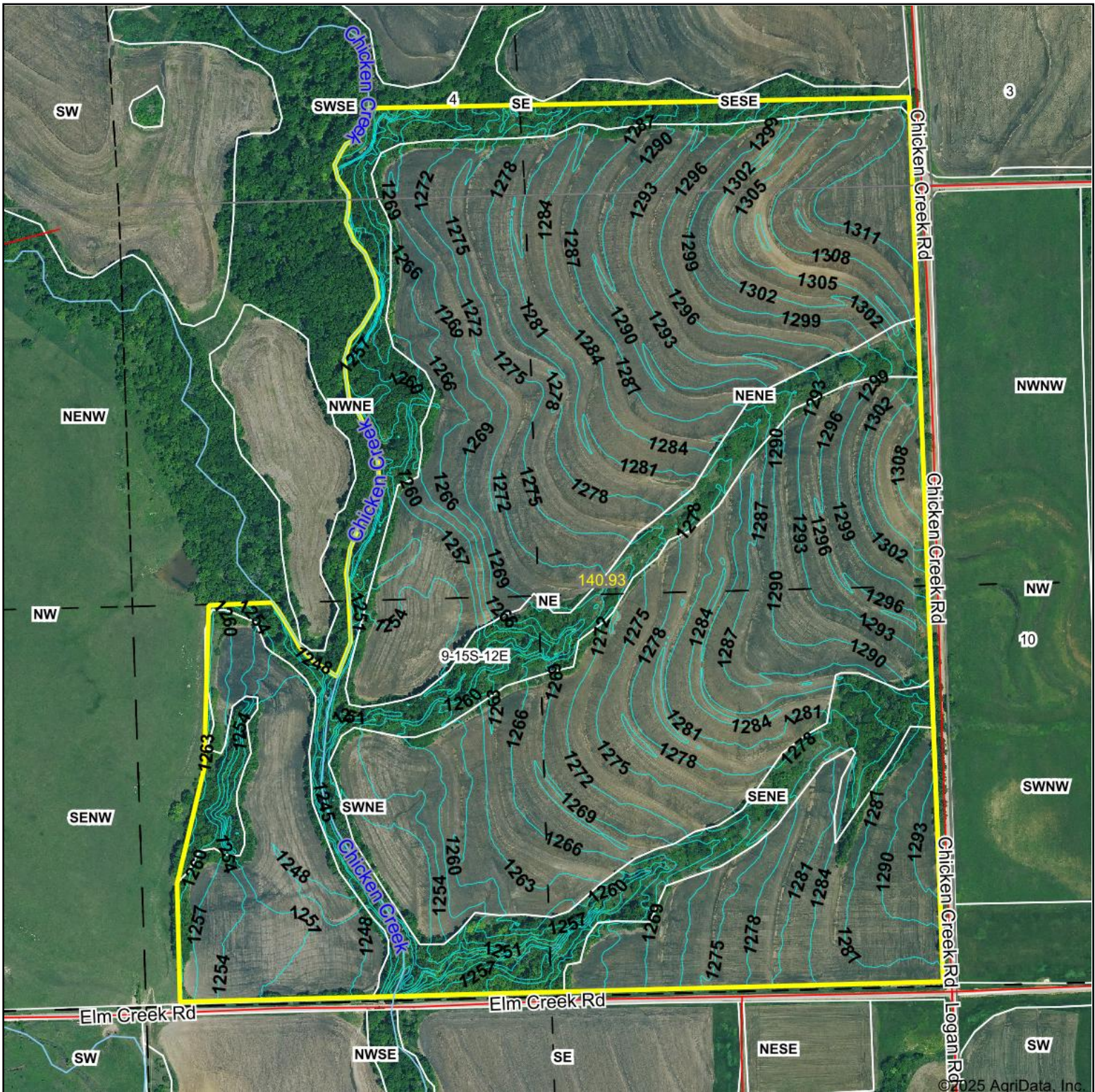
9-15S-12E
Wabaunsee County
Kansas



1/20/2025

Field borders provided by Farm Service Agency as of 5/21/2008.

Topography Contours



Maps Provided By:



© AgriData, Inc. 2023 www.AgriDataInc.com

Field borders provided by Farm Service Agency as of 5/21/2008.

Source: USGS 1 meter dem

Interval(ft): 3.0

Min: 1,241.4

Max: 1,313.7

Range: 72.3

Average: 1,276.1

Standard Deviation: 17.26 ft

0ft 513ft 1025ft

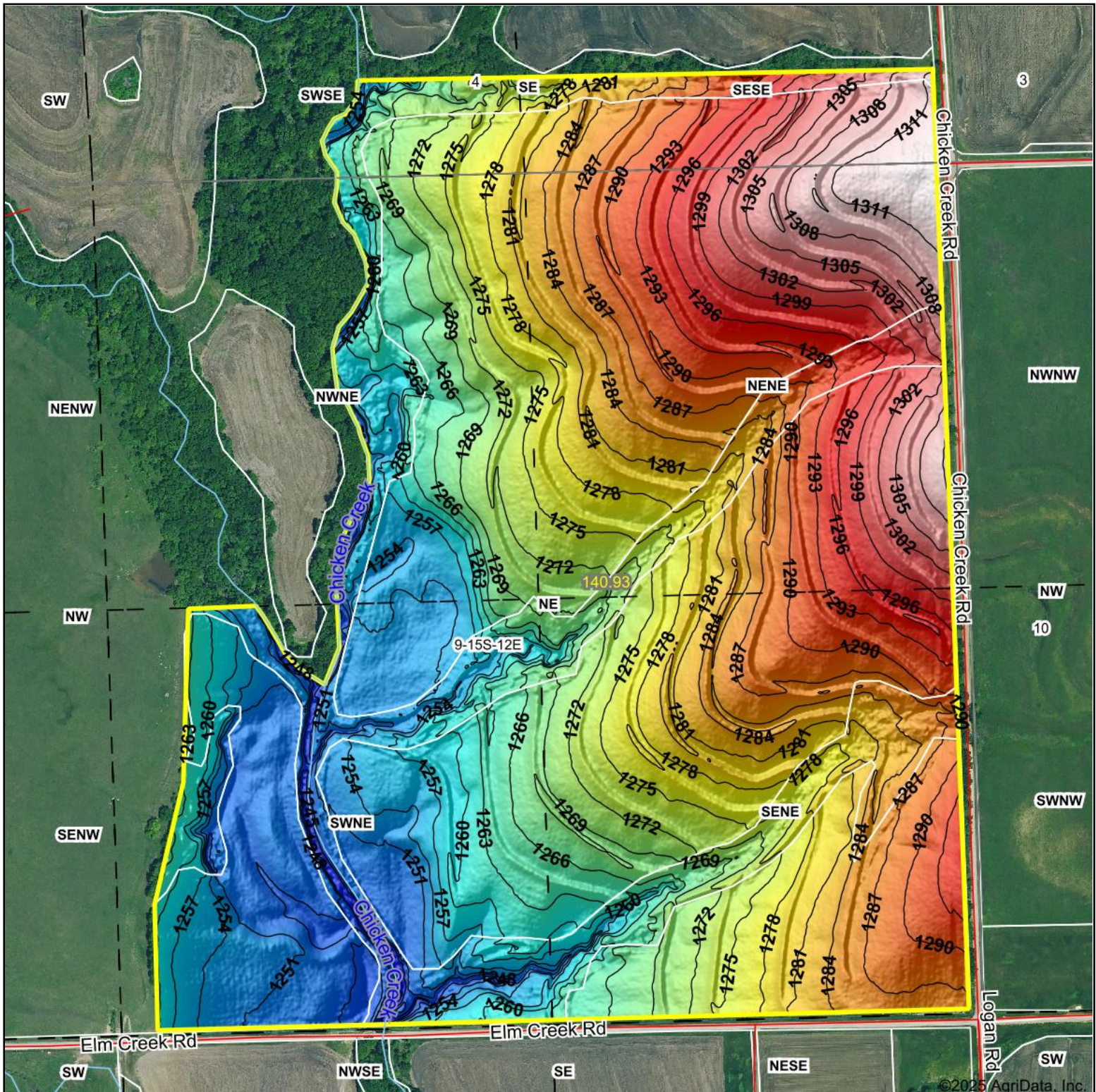


1/20/2025

9-15S-12E
Wabaunsee County
Kansas

Boundary Center: 38° 45' 53.94, -96° 4' 47.73

Topography Hillshade



Low Elevation High



Source: USGS 1 meter dem

Interval(ft): 3

Min: 1,241.4

Max: 1,313.7

Range: 72.3

Average: 1,276.1

Standard Deviation: 17.26 ft

0ft 482ft 965ft



1/20/2025

9-15S-12E
Wabaunsee County
Kansas

Boundary Center: 38° 45' 53.94, -96° 4' 47.73



Maps Provided By:

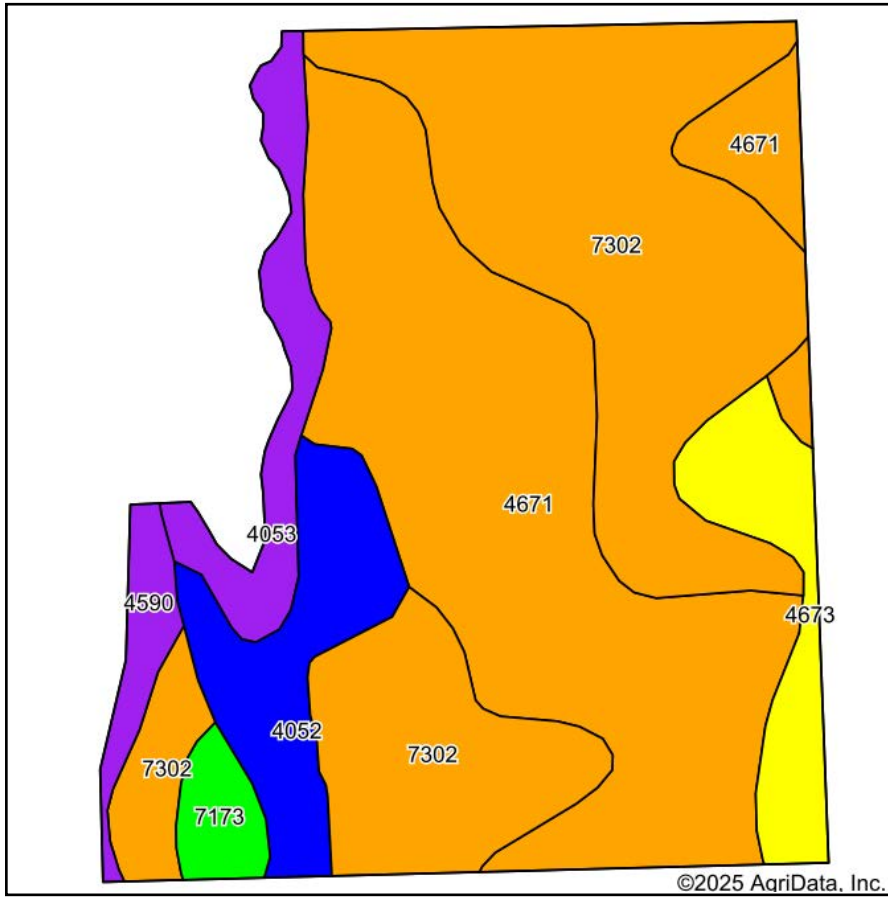


© AgriData, Inc. 2023

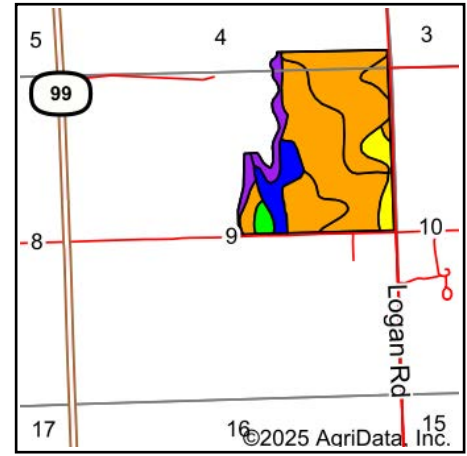
www.AgriDataInc.com

Field borders provided by Farm Service Agency as of 5/21/2008.

Soils Map



Soils data provided by USDA and NRCS.



State: **Kansas**
 County: **Wabaunsee**
 Location: **9-15S-12E**
 Township: **Wilmington**
 Acres: **140.93**
 Date: **1/20/2025**



Maps Provided By:

 CUSTOMIZED ONLINE MAPPING
 © AgriData, Inc. 2023 www.AgriDataInc.com



Area Symbol: KS197, Soil Area Version: 25

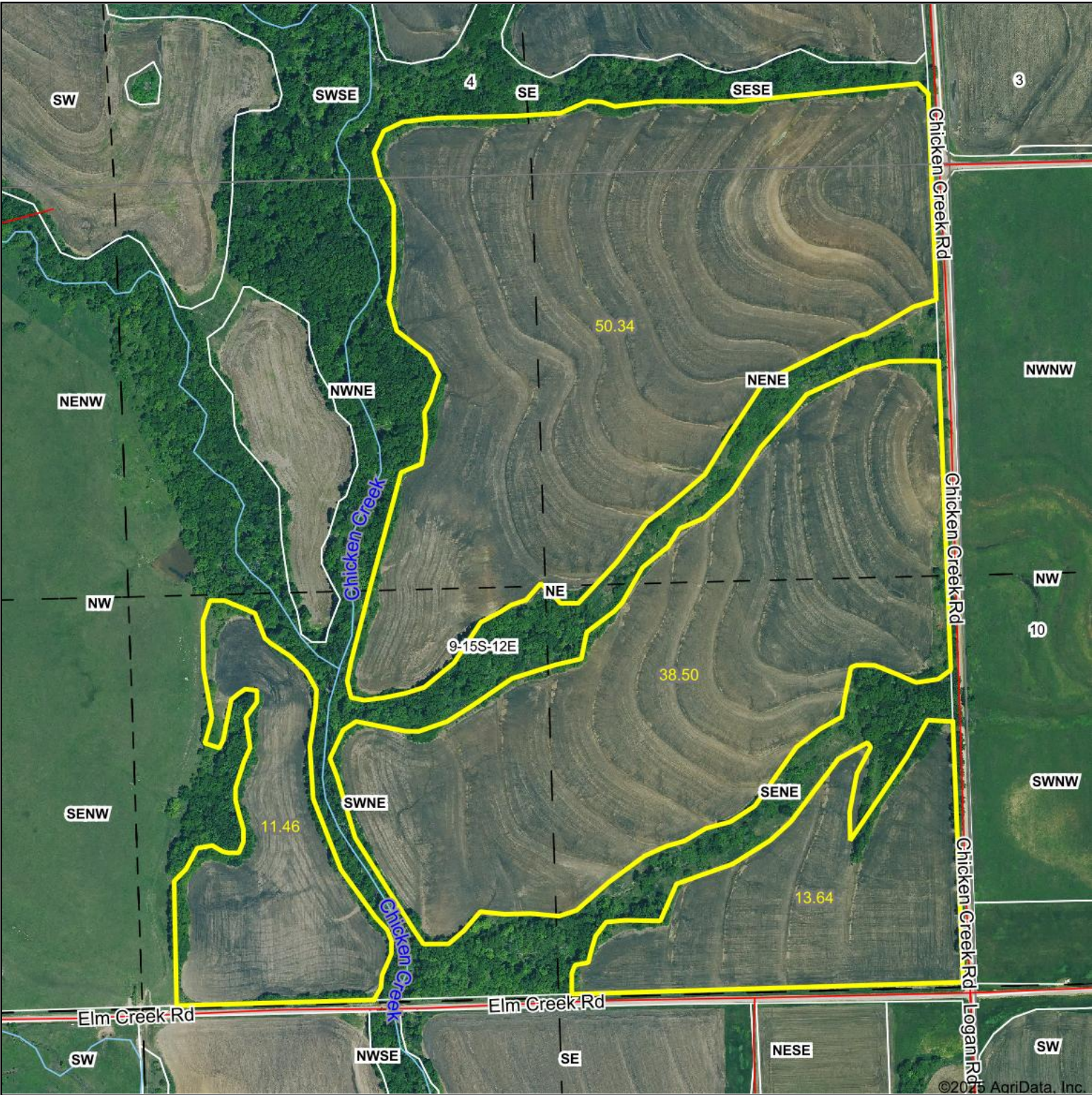
Code	Soil Description	Acres	Percent of field	Non-Irr Class Legend	Non-Irr Class *c	Irr Class *c	*n NCCPI Soybeans
7302	Martin silty clay loam, 3 to 7 percent slopes	55.31	39.1%		IIIe		47
4671	Irwin silty clay loam, 1 to 3 percent slopes	52.13	37.0%		IIIs	III s	55
4052	Ivan silt loam, occasionally flooded	11.36	8.1%		IIw	II w	81
4673	Irwin silty clay loam, 3 to 7 percent slopes	8.44	6.0%		IVe	IV e	57
4053	Ivan silty clay loam, channeled	7.54	5.4%		Vw		49
4590	Clime-Sogn complex, 3 to 20 percent slopes	3.21	2.3%		Vle		33
7173	Reading silty clay loam, rarely flooded	2.94	2.1%		Iw	I w	75
Weighted Average					3.11	*-	*n 53.7

*n: The aggregation method is "Weighted Average using all components"

*c: Using Capabilities Class Dominant Condition Aggregation Method

*- Irr Class weighted average cannot be calculated on the current soils data due to missing data.

Aerial Map



Boundary Center: 38° 45' 53.69, -96° 4' 47.71



9-15S-12E
Wabaunsee County
Kansas

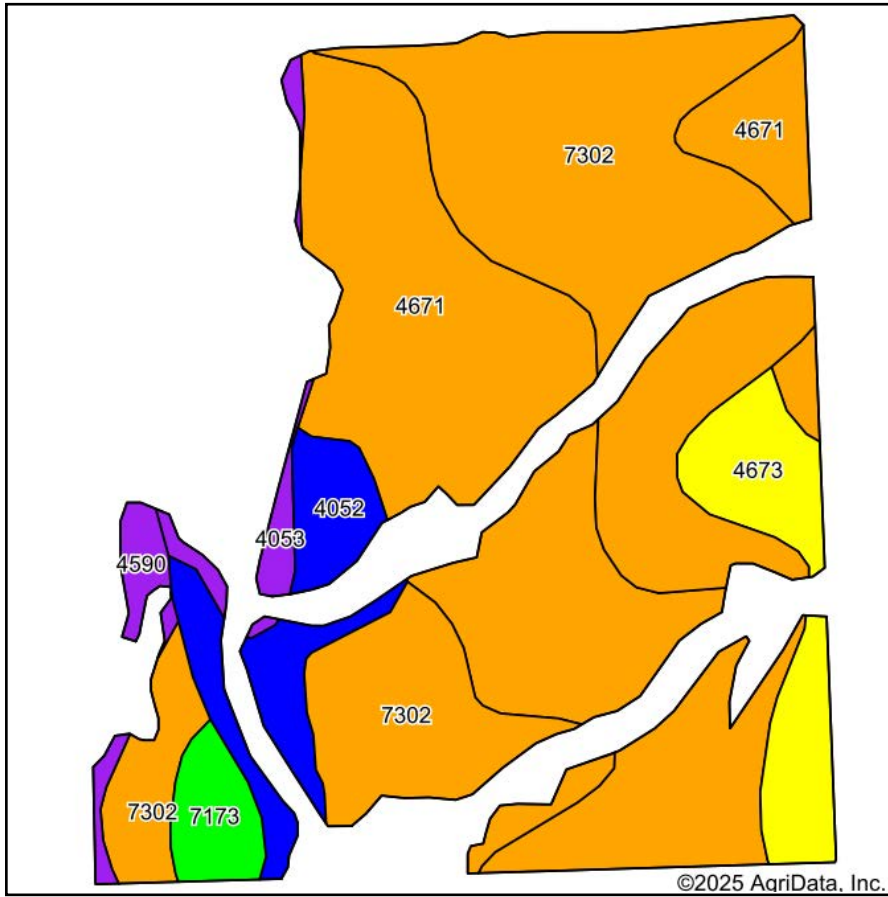


Maps Provided By:
 **surety**[®]
CUSTOMIZED ONLINE MAPPING
© AgriData, Inc. 2023 www.AgriDataInc.com

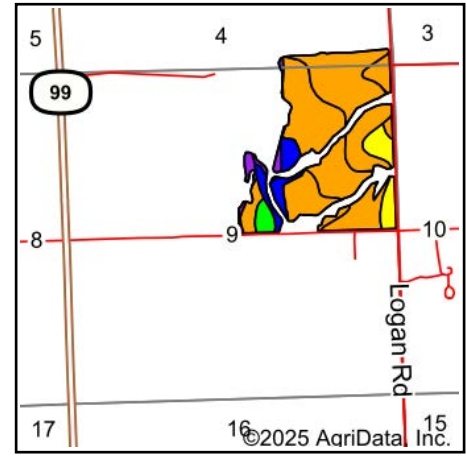
1/20/2025

Field borders provided by Farm Service Agency as of 5/21/2008.

Soils Map



Soils data provided by USDA and NRCS.



State: **Kansas**
 County: **Wabaunsee**
 Location: **9-15S-12E**
 Township: **Wilmington**
 Acres: **113.94**
 Date: **1/20/2025**



Maps Provided By:
surety
 CUSTOMIZED ONLINE MAPPING
 © AgriData, Inc. 2023 www.AgriDataInc.com



Area Symbol: KS197, Soil Area Version: 25

Code	Soil Description	Acres	Percent of field	Non-Irr Class Legend	Non-Irr Class *c	Irr Class *c	*n NCCPI Soybeans
4671	Irwin silty clay loam, 1 to 3 percent slopes	45.78	40.1%		III _s	III _s	55
7302	Martin silty clay loam, 3 to 7 percent slopes	44.95	39.5%		III _e		47
4673	Irwin silty clay loam, 3 to 7 percent slopes	8.42	7.4%		IV _e	IV _e	57
4052	Ivan silt loam, occasionally flooded	8.04	7.1%		II _w	II _w	81
7173	Reading silty clay loam, rarely flooded	2.98	2.6%		I _w	I _w	75
4053	Ivan silty clay loam, channeled	1.91	1.7%		V _w		49
4590	Clime-Sogn complex, 3 to 20 percent slopes	1.86	1.6%		V _{le}		33
Weighted Average					3.03	*-	*n 53.9

*n: The aggregation method is "Weighted Average using all components"

*c: Using Capabilities Class Dominant Condition Aggregation Method

*- Irr Class weighted average cannot be calculated on the current soils data due to missing data.