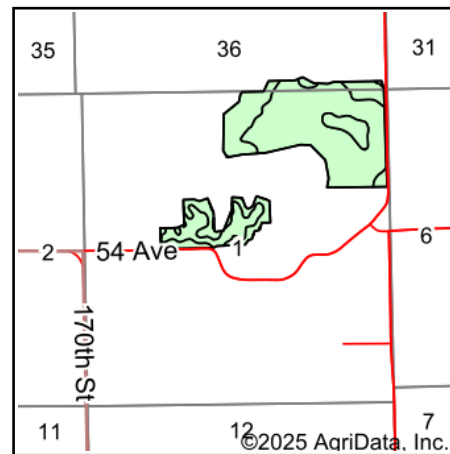
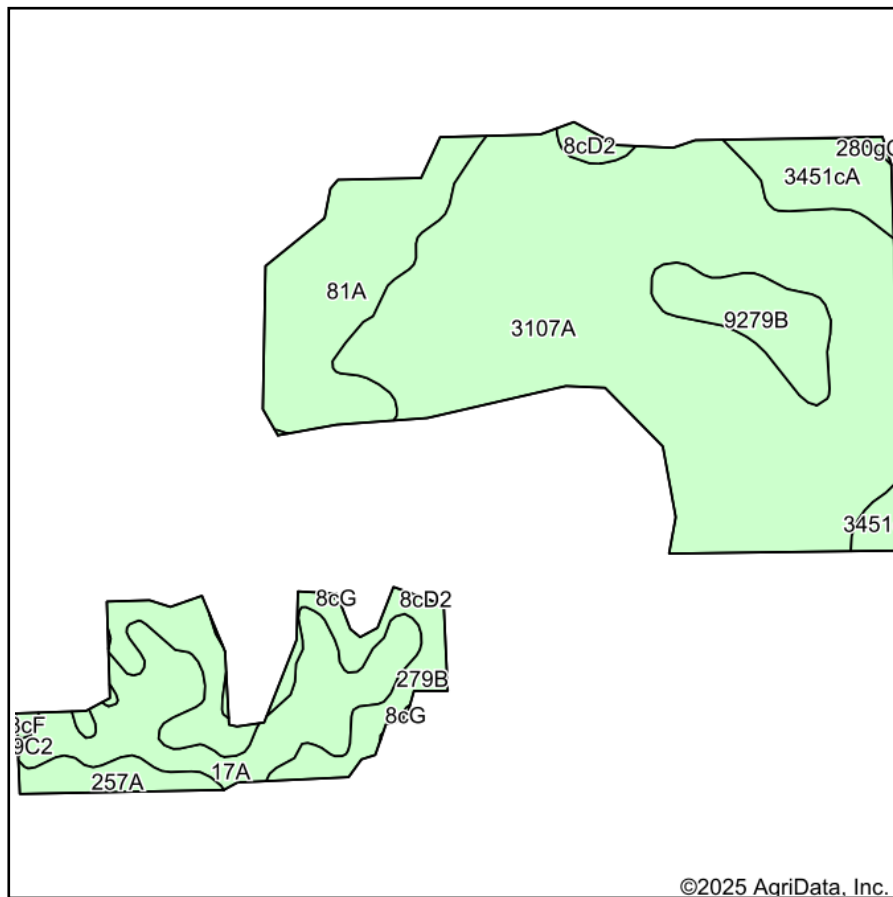


Soils Map



State: **Illinois**
 County: **Warren**
 Location: **1-8N-1W**
 Township: **Greenbush**
 Acres: **108.61**
 Date: **1/31/2025**



Maps Provided By:

 CUSTOMIZED ONLINE MAPPING
 © AgriData, Inc. 2023 www.AgriDataInc.com



Area Symbol: IL187, Soil Area Version: 18

Code	Soil Description	Acres	Percent of field	Corn Bu/A	Soybeans Bu/A	Wheat Bu/A	Crop productivity index for optimum management
**3107A	Sawmill silty clay loam, 0 to 2 percent slopes, frequently flooded	59.97	55.3%	**170	**54	**64	**125
81A	Littleton silt loam, 0 to 2 percent slopes	13.00	12.0%	194	61	74	142
17A	Keomah silt loam, 0 to 2 percent slopes	11.90	11.0%	161	51	65	119
**279B	Rozetta silt loam, 2 to 5 percent slopes	9.16	8.4%	**161	**50	**64	**118
**3451cA	Lawson silt loam, cool mesic, 0 to 2 percent slopes, frequently flooded	5.53	5.1%	**171	**55	**66	**126
**9279B	Rozetta silt loam, terrace, 2 to 5 percent slopes	5.23	4.8%	**161	**50	**64	**118
257A	Clarksdale silt loam, 0 to 2 percent slopes	2.32	2.1%	174	56	69	128
**8cD2	Hickory silt loam, cool mesic, 10 to 18 percent slopes, eroded	0.78	0.7%	**107	**37	**44	**82
**8cF	Hickory silt loam, cool mesic, 18 to 35 percent slopes	0.56	0.5%	**89	**30	**36	**68
**280gC2	Fayette silt loam, glaciated, 5 to 10 percent slopes, eroded	0.16	0.1%	**155	**49	**61	**113
Weighted Average				169.9	53.8	65.2	124.9

Table: Optimum Crop Productivity Ratings for Illinois Soil EFOTG are sourced from Bulletin 811 calculated Map Unit Base Yield Indices, and adjusted (Adj) for slope, erosion, flooding, and surface texture. Publication Date: 02-08-2023

Crop yields and productivity (B811 EFOTG) are maintained at the following USDA web site: 2023 Illinois Soil Productivity and Yield Indices:

<https://efotg.sc.egov.usda.gov/#/state/IL/documents/section=2&folder=52809>

** Base indexes from Bulletin 811 adjusted for slope, erosion, flooding, and surface texture according to the II. Soils EFOTG