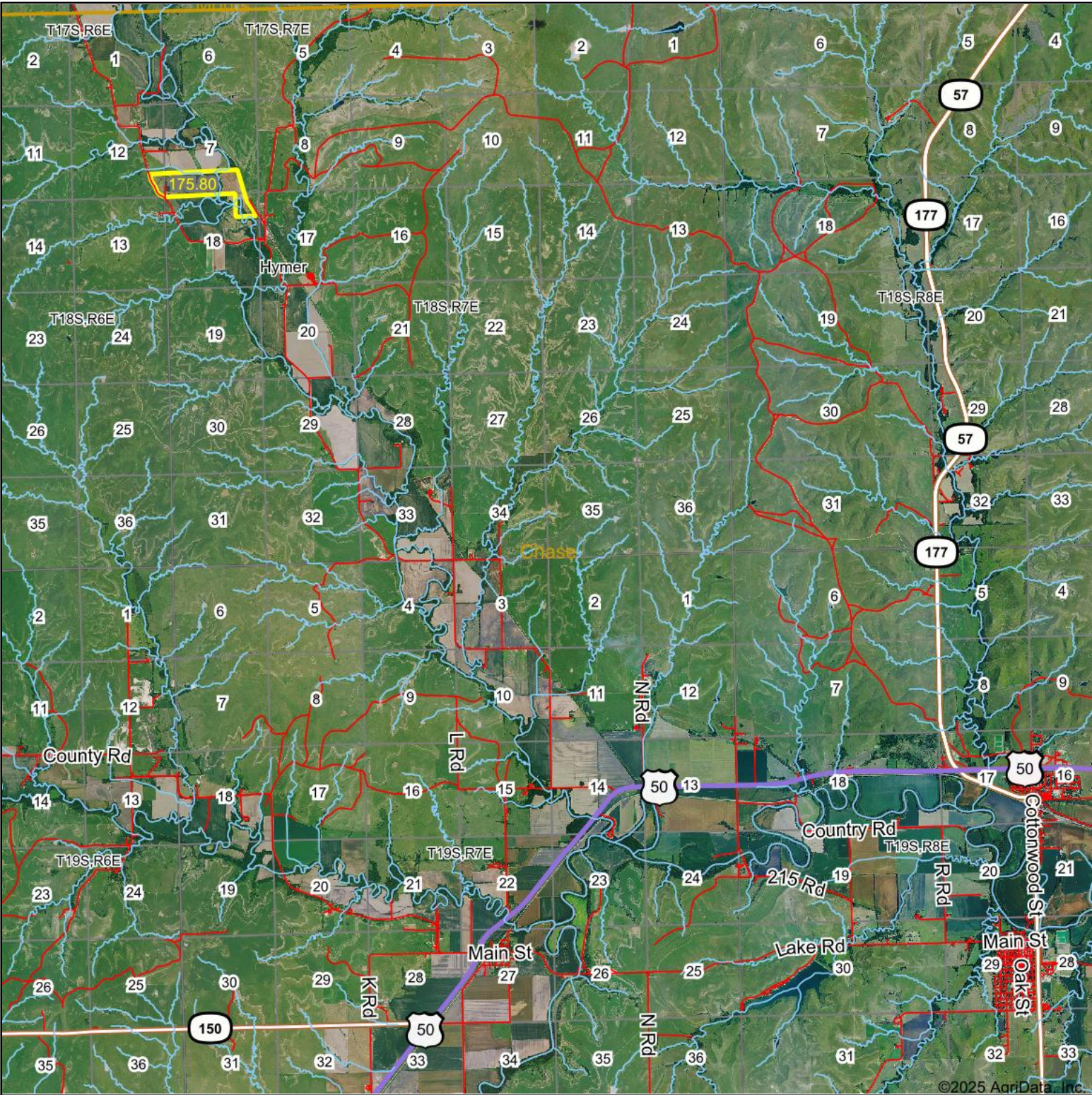


Aerial Map



Boundary Center: 38° 29' 35.63, -96° 42' 3.53

0ft 8886ft 17773ft

7-18S-7E  
Chase County  
Kansas



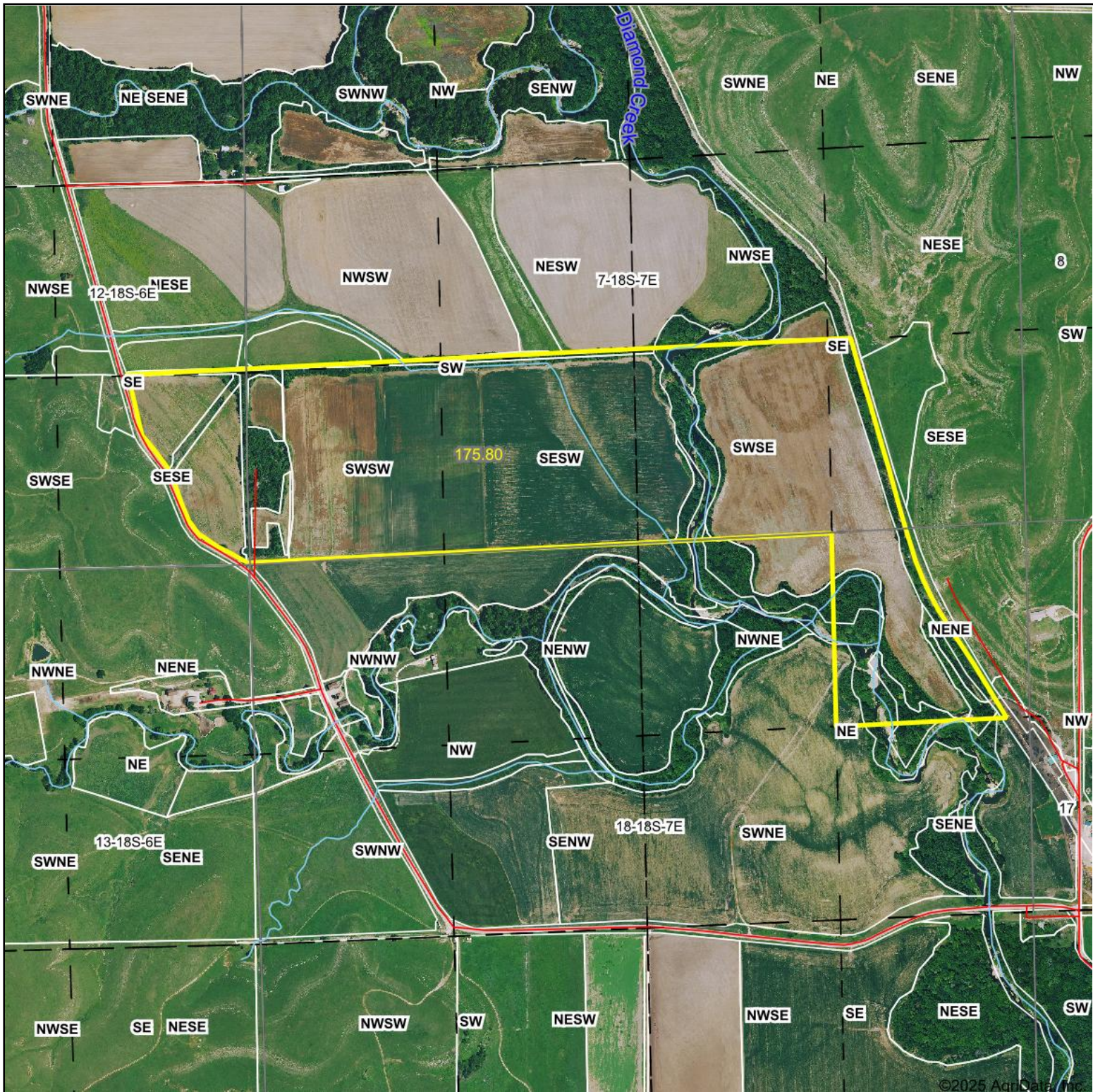
Maps Provided By:  
 **surety**  
CUSTOMIZED ONLINE MAPPING  
© AgriData, Inc. 2023 www.AgriDataInc.com

2/1/2025

Field borders provided by Farm Service Agency as of 5/21/2008.



## Aerial Map



**Griffin**  
Real Estate & Auction

Boundary Center: 38° 29' 35.63, -96° 42' 3.53

A horizontal number line with tick marks at 0, 1075, and 2150. The segment from 0 to 1075 is shaded gray.

**7-18S-7E**  
**Chase County**  
**Kansas**



Maps Provided By:

 **surety**<sup>®</sup>  
CUSTOMIZED ONLINE MAPPING

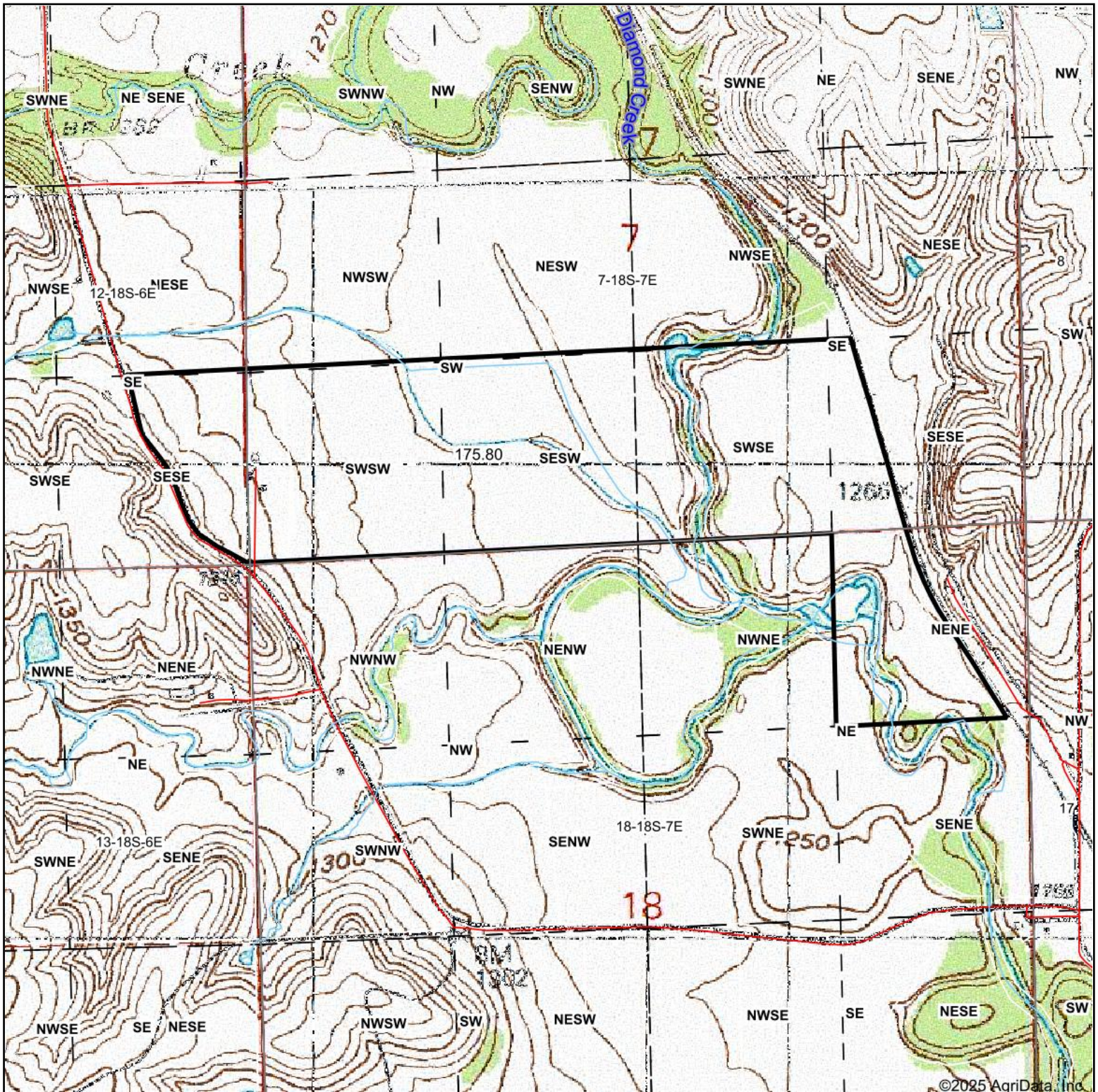
© AgriData, Inc. 2023 [www.AgriDataInc.com](http://www.AgriDataInc.com)

2/1/2025

Field borders provided by Farm Service Agency as of 5/21/2008.



# Topography Map



Maps Provided By:



© AgriData, Inc. 2023

www.AgrIDataInc.com

Map Center: 38° 29' 35.04, -96° 42' 5.17

0ft 1075ft 2150ft

**7-18S-7E**  
**Chase County**  
**Kansas**

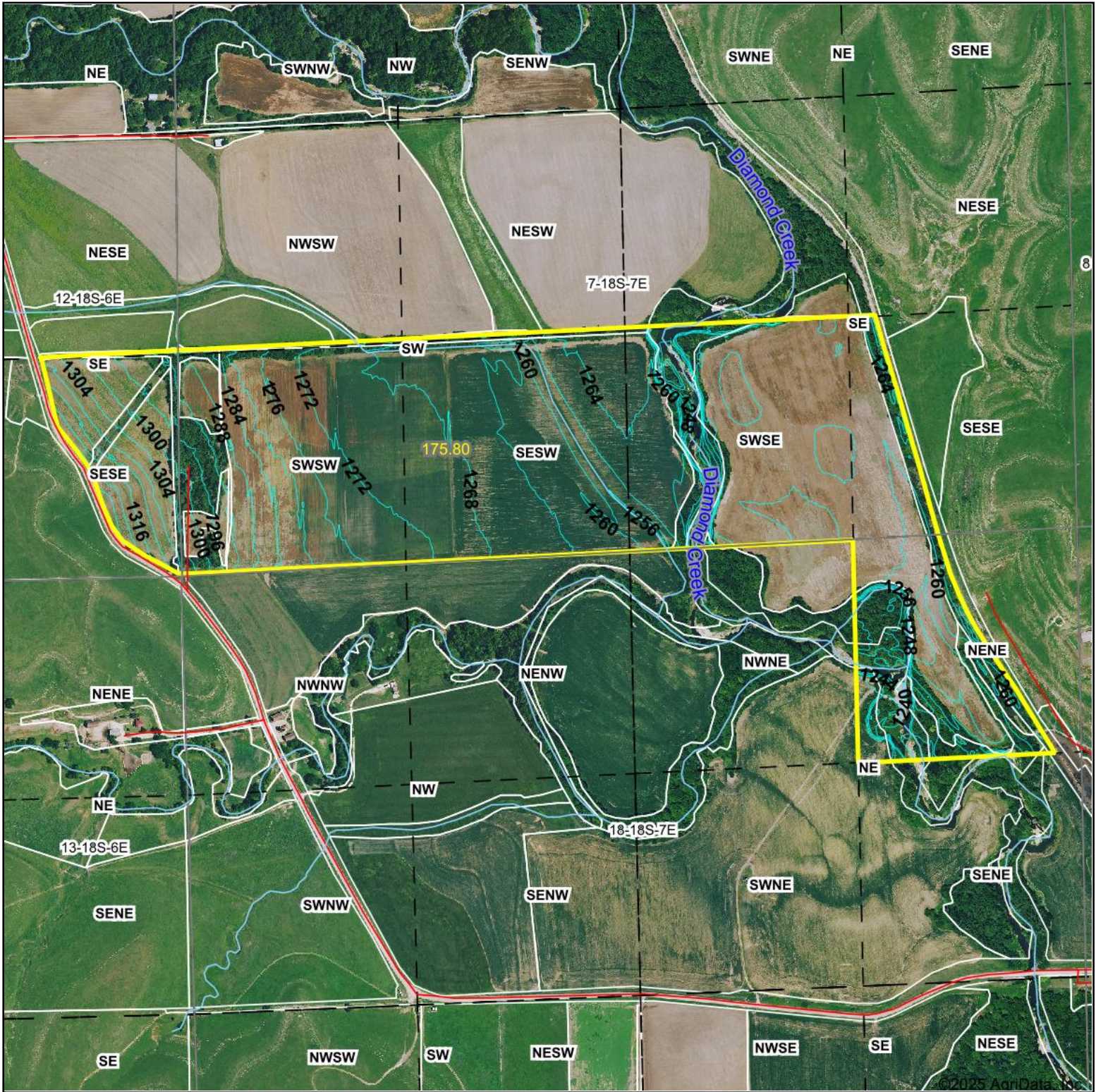


2/1/2025

Field borders provided by Farm Service Agency as of 5/21/2008.



## Topography Contours



**Griffin**  
Real Estate & Auction

**Source:** USGS 3 meter dem

Interval(ft): 4.0

Min: 1,233.7

**Max:** 1,328.4

**Range:** 94.7

**Average:** 1,269.1

**Standard Deviation:** 16.34 ft

0ft                      932ft                      1864ft



2/1/2025

**7-18S-7E**  
**Chase County**  
**Kansas**

Boundary Center: 38° 29' 35.63, -96° 42' 3.53

Maps Provided By:



**surety®**  
CUSTOMIZED ONLINE MAPPING

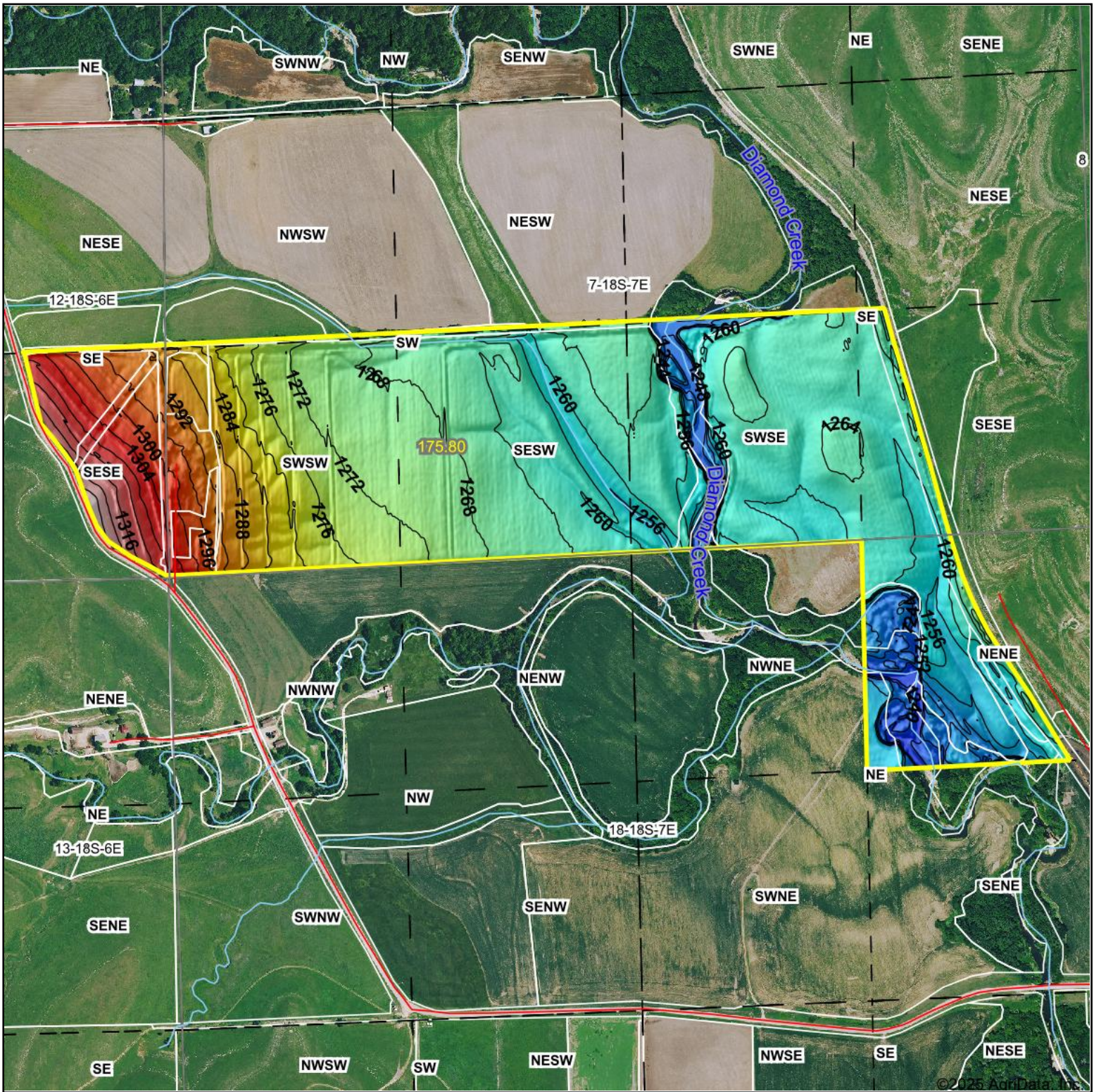
© AgriData, Inc. 2023

[www.AgriDataInc.com](http://www.AgriDataInc.com)

Field borders provided by Farm Service Agency as of 5/21/2008.



## Topography Hillshade



Low                      Elevation                      High



Source: USGS 3 meter dem

Interval(ft): 4

Min: 1,233.7

Max: 1,328.4

Range: 94.7

Average: 1,269.1

Standard Deviation: 16.34 ft

0ft                      902ft                      1804ft



2/1/2025

**7-18S-7E**  
**Chase County**  
**Kansas**

Boundary Center: 38° 29' 35.63, -96° 42' 3.53

**GRIFFIN**  
Real Estate & Auction

Maps Provided By:



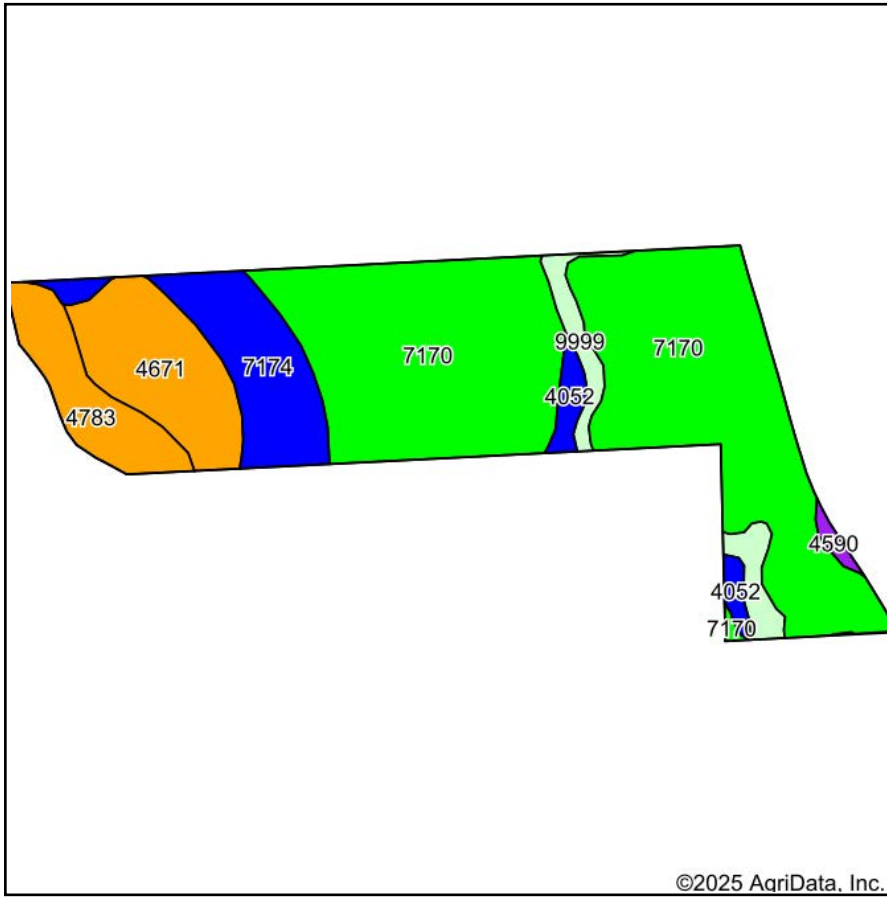
© AgriData, Inc. 2023

[www.AgriDataInc.com](http://www.AgriDataInc.com)

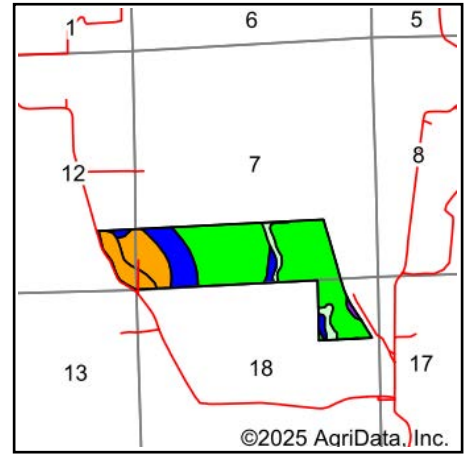
Field borders provided by Farm Service Agency as of 5/21/2008.



# Soils Map



Soils data provided by USDA and NRCS.



State: **Kansas**  
 County: **Chase**  
 Location: **7-18S-7E**  
 Township: **Diamond Creek**  
 Acres: **175.8**  
 Date: **2/1/2025**



Maps Provided By:  
  
 CUSTOMIZED ONLINE MAPPING  
 © AgriData, Inc. 2023 www.AgriDataInc.com



Area Symbol: KS017, Soil Area Version: 20

Code	Soil Description	Acres	Percent of field	Non-Irr Class Legend	Non-Irr Class *c	Irr Class *c	*n NCCPI Soybeans
7170	Reading silt loam, rarely flooded	109.28	62.2%		Iw	Iw	76
4671	Irwin silty clay loam, 1 to 3 percent slopes	20.72	11.8%		IIIs	IIIs	55
7174	Reading silt loam, 1 to 3 percent slopes	19.41	11.0%		Ile	Ile	76
4783	Tully silty clay loam, 3 to 7 percent slopes	13.32	7.6%		IIle	IIle	60
9999	Water	7.98	4.5%				
4052	Ivan silt loam, occasionally flooded	4.07	2.3%		IIw	IIw	81
4590	Clime-Sogn complex, 3 to 20 percent slopes	1.02	0.6%		VIe		33
<b>Weighted Average</b>					<b>*-</b>	<b>*-</b>	<b>*n 68.7</b>

\*n: The aggregation method is "Weighted Average using all components"

\*c: Using Capabilities Class Dominant Condition Aggregation Method

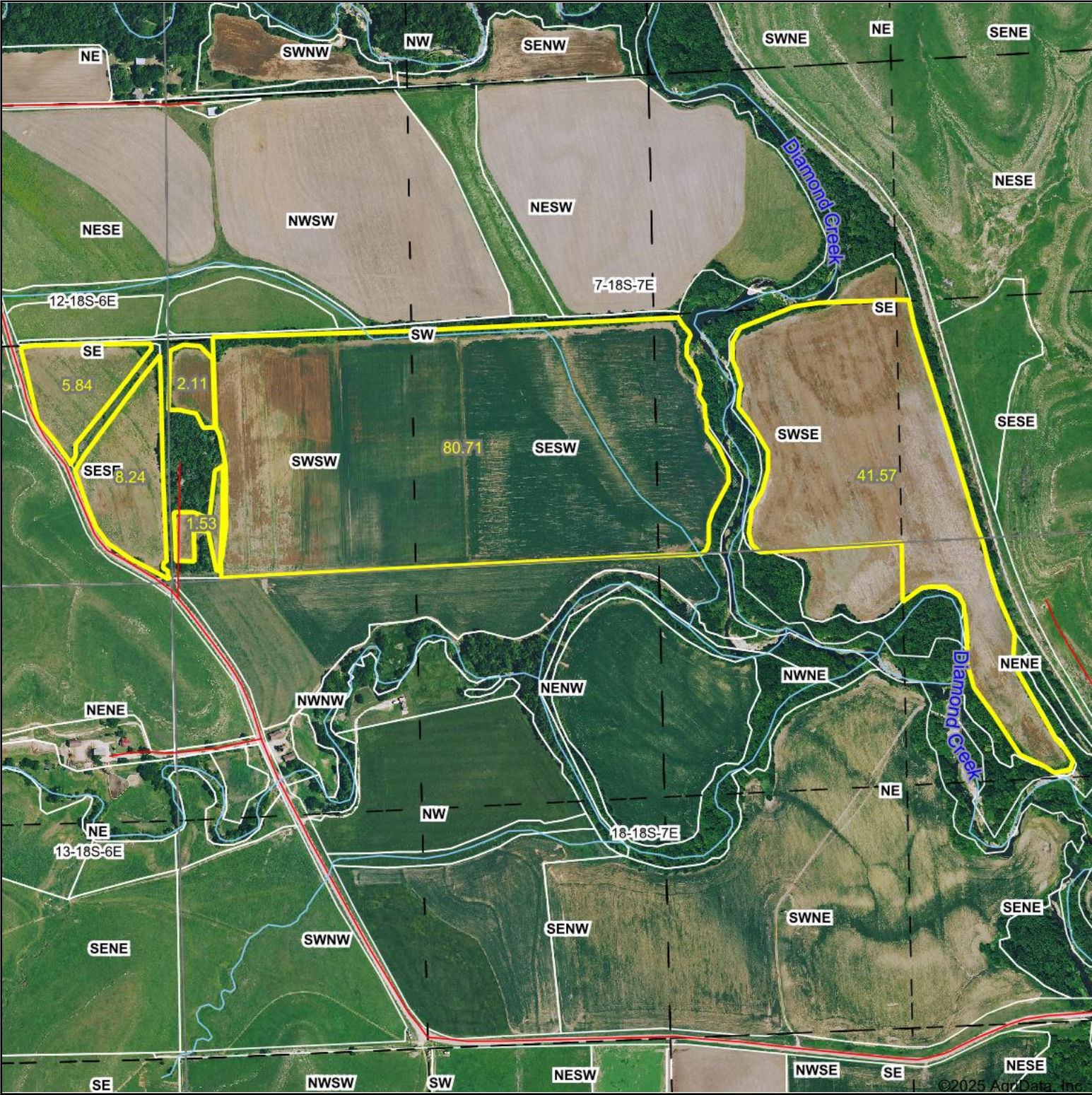
\*- Non Irr Class weighted average cannot be calculated on the current soils data due to missing data.

\*- Irr Class weighted average cannot be calculated on the current soils data due to missing data.

Soils data provided by USDA and NRCS.



Aerial Map



7-18S-7E  
Chase County  
Kansas



Map Center: 38° 29' 35.87, -96° 42' 5.11

0ft 860ft 1720ft

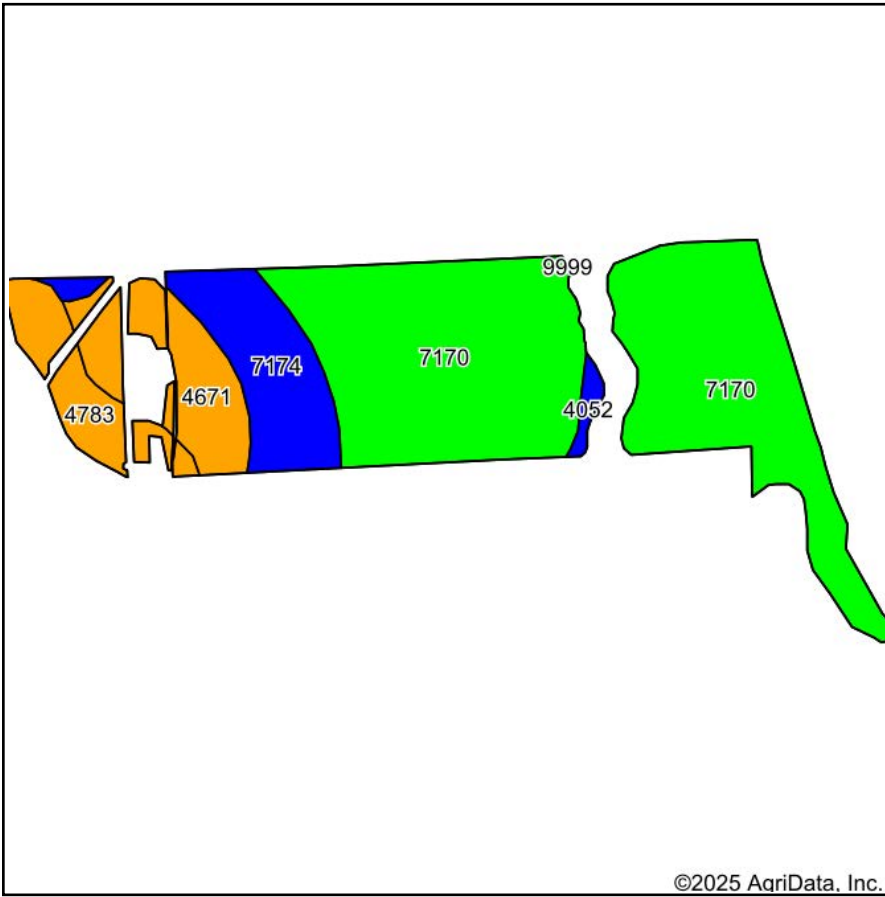
Maps Provided By:  
 **surety**  
CUSTOMIZED ONLINE MAPPING  
© AgriData, Inc. 2023 www.AgriDataInc.com

2/1/2025

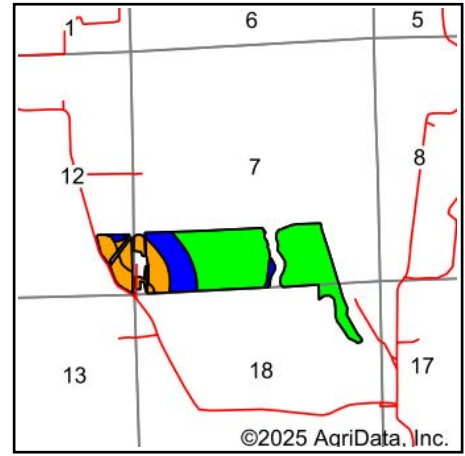
Field borders provided by Farm Service Agency as of 5/21/2008.



# Soils Map



Soils data provided by USDA and NRCS.



State: **Kansas**  
 County: **Chase**  
 Location: **7-18S-7E**  
 Township: **Diamond Creek**  
 Acres: **140**  
 Date: **2/1/2025**



Maps Provided By:  
  
 CUSTOMIZED ONLINE MAPPING  
 © AgriData, Inc. 2023 www.AgriDataInc.com



Area Symbol: KS017, Soil Area Version: 20

Code	Soil Description	Acres	Percent of field	Non-Irr Class Legend	Non-Irr Class *c	Irr Class *c	*n NCCPI Soybeans
7170	Reading silt loam, rarely flooded	92.97	66.4%		Iw	Iw	76
7174	Reading silt loam, 1 to 3 percent slopes	18.77	13.4%		Ile	Ile	76
4671	Irwin silty clay loam, 1 to 3 percent slopes	15.77	11.3%		IIIs	IIIs	55
4783	Tully silty clay loam, 3 to 7 percent slopes	11.03	7.9%		IIle	IIle	60
4052	Ivan silt loam, occasionally flooded	1.46	1.0%		IIw	IIw	81
Weighted Average					1.53	1.53	*n 72.4

\*n: The aggregation method is "Weighted Average using all components"

\*c: Using Capabilities Class Dominant Condition Aggregation Method

Soils data provided by USDA and NRCS.