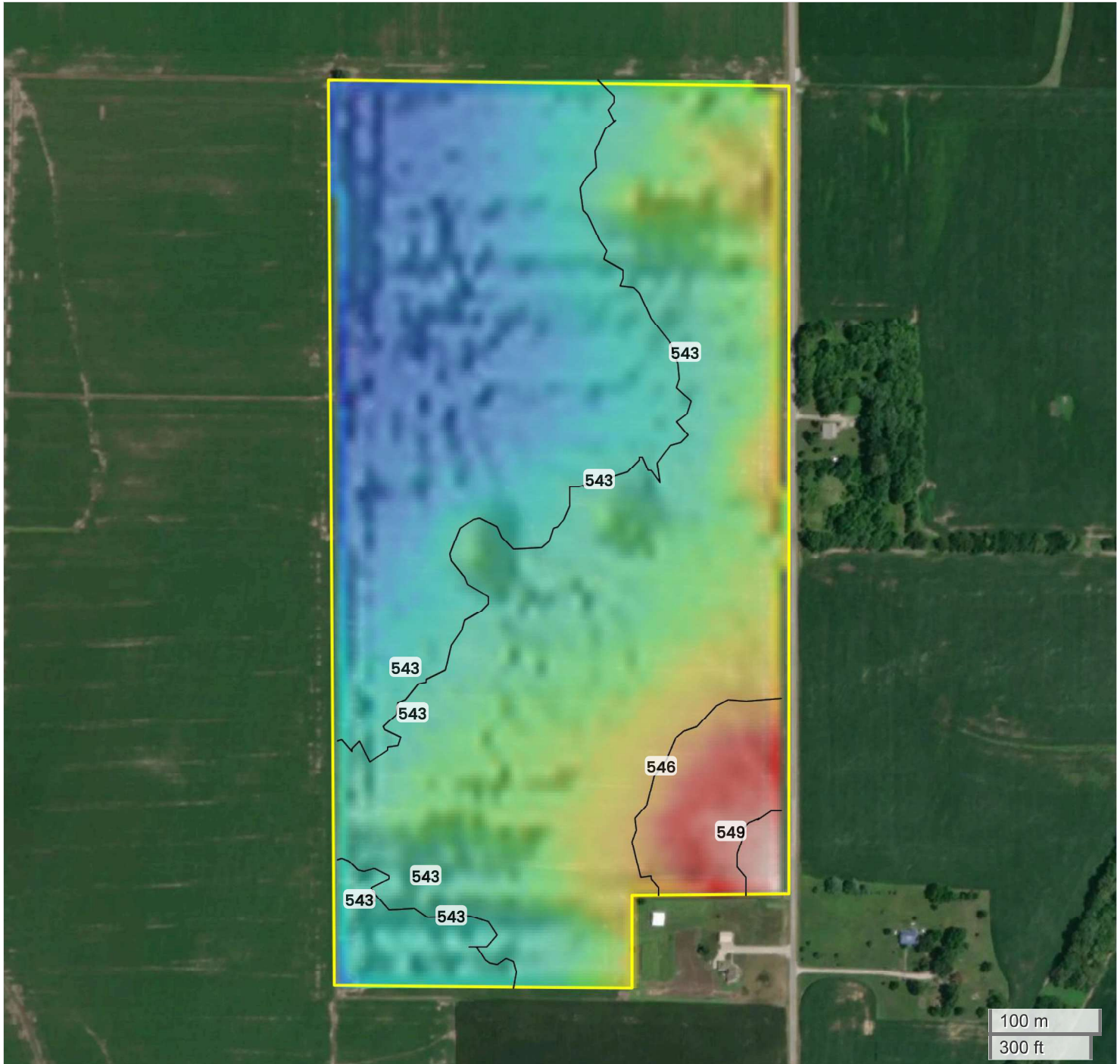




CHARLES MARCUS RICE II REVOCABLE TRUST (77.89 AC TOTAL, 77.36 AC TILLABLE)

## TOPOGRAPHY



543 ft

549 ft

Center: 38.848219, -89.766206

28-5N-6W

Alhambra Township

Madison County, IL

Source: USGS 10m DEM

Interval(ft): 3

Max: 549.0 ft

Min: 543.0 ft

Range: 6.0 ft

Average: 546.0 ft



FarmWorth, LLC makes no representations or warranties, express or implied, as to the accuracy of any information, data, numerical values, boundaries, or any other information generated through the use of FarmWorth.com. User is solely responsible for independently investigating and determining all information provided through FarmWorth.com prior to use and waives any and all claims against FarmWorth, LLC for any inaccuracies or inconsistencies in the information and/or data.

