



**Hawkeye
Farm Mgmt &
Real Estate**

Southern Iowa Acreage w/ Home

*6001 145th Trail, Albia, IA 52531
Monroe County, Iowa*

\$395,000

31 +/- Acres



PROPERTY FEATURES



**Hawkeye
Farm Mgmt &
Real Estate**

31 Acres of Hunting & Recreational Land

Ideal for experiencing all Southern Iowa has to offer

Great Location

Only 2 miles from Highway 5 and located between Albia & Lovilla

5 Bedroom, 3 Bathroom Home

Recent modern updates paired with a spacious layout to maximize comfort and functionality

Primary Suite

Featuring a large walk-in closet and private bath

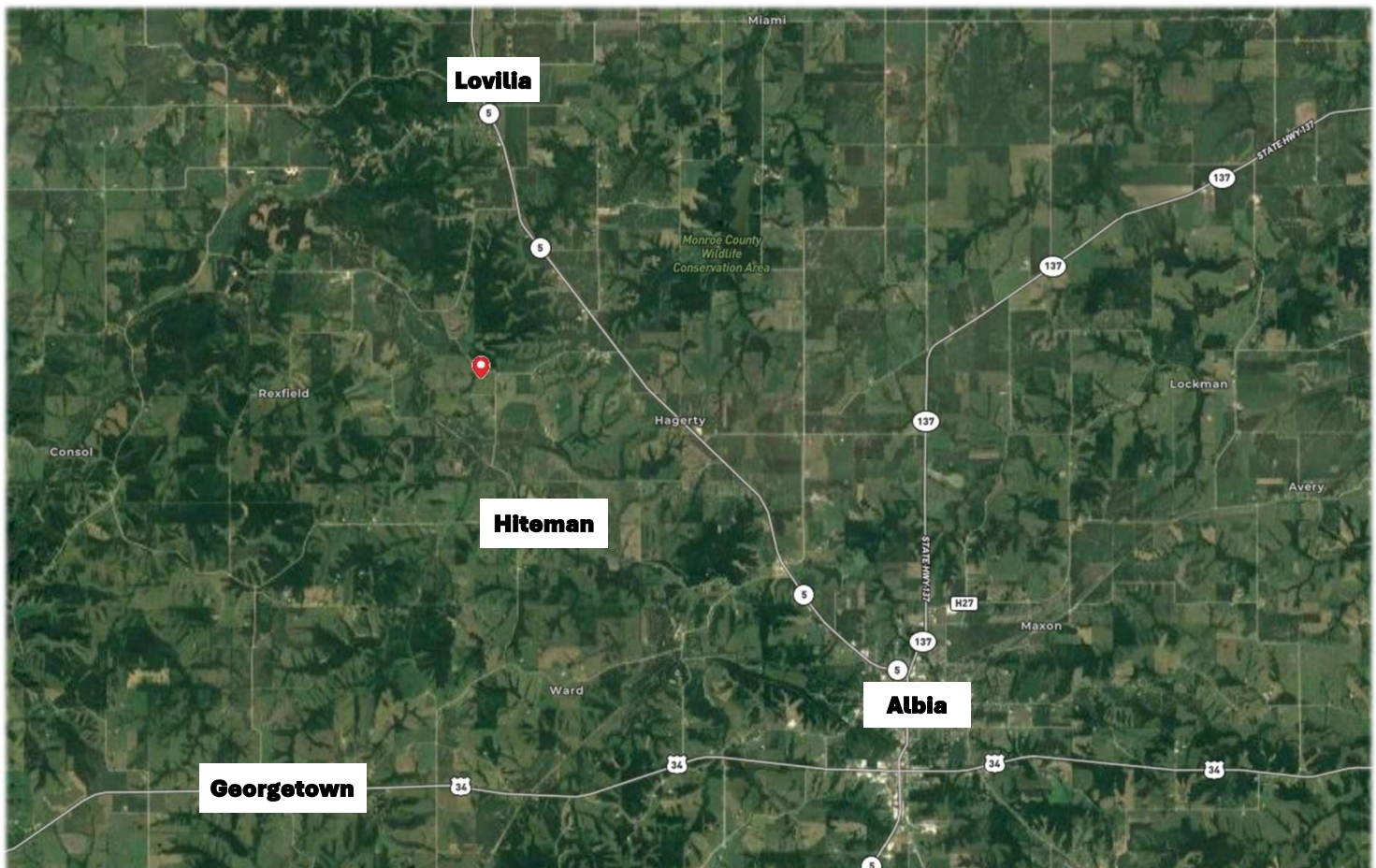
Exceptional Habitat

Located in an area known for whitetail deer & turkey hunting

Diverse Landscape

Combination of timber, open fields, and a pond

Annual Taxes \$2,576



PROPERTY MAP



**Hawkeye
Farm Mgmt &
Real Estate**

Aerial Map Boundary Lines Are Approximate



©2024 AgriData, Inc.

Hawkeye Farm Mgmt & Real Estate



2216 Main, Monroeville, PA 15146
Email: hawkeye@hawkeye.com
On the web: www.hawkeye.com
www.hawkeyefarm.com

Boundary Center: 41° 5' 13.97, -92° 54' 19.38

0ft 268ft 536ft

**35-73N-18W
Monroe County
Iowa**



Map Provided By:

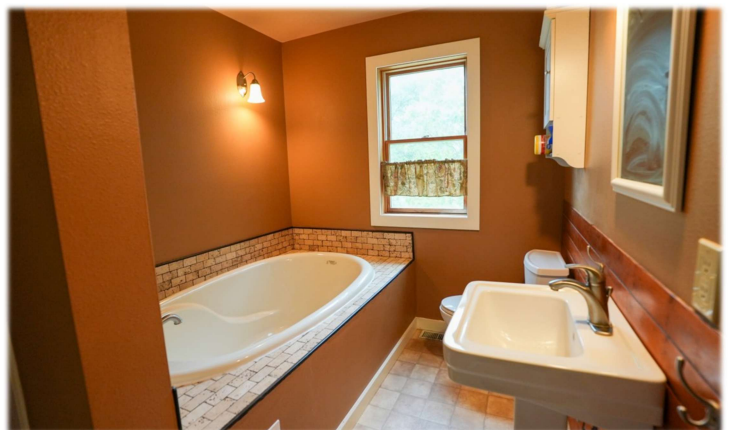
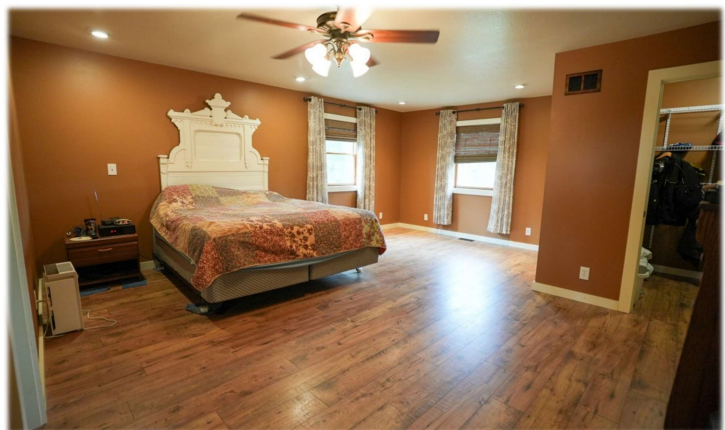
© AgriData, Inc. 2023 www.agridata.com

7/25/2024

PROPERTY IMAGES



**Hawkeye
Farm Mgmt &
Real Estate**





Hawkeye Farm Mgmt & Real Estate

1010 South Clinton, Albia, IA 52531

Phone: 641-932-7796

Email: hawkeye@uciowa.com

On the web: www.uciowa.com

"Serving Southern Iowa & Northern Missouri"

For more maps, disclosures, and images
please visit www.UClowa.com

or

to set up a time to see this property contact
Ryan Ammons or Nate Ammons!



Ryan Ammons

Broker

Licensed in Iowa
Office: (641) 932-7796

Ryan: (641) 777-2955
Ryan@uciowa.com

Nate: (641) 777-2861
Nate@uciowa.com



Nate Ammons

Realtor ®

The above information, although believed to be correct, is not warranted
or guaranteed by the owner, listing firm, or listing agent.

