

**AMERICAN
LEGACY
LAND CO**

FOR SALE

BARNDOMINIMUM
Loup County, NE

12.08 +/- Acres

OFFERED AT:
\$495,000

ABOUT THIS PROPERTY:

Welcome to your exclusive 12.08 acres Nebraska Sandhills retreat in the heart of Nebraska's natural beauty. Situated just 1 mile north of Calamus Reservoir is 12.08 acres of Nebraska Prairie to include a finished and partially furnished Barndominium you can call home.

This is a rare opportunity to own a piece of paradise that borders the Calamus river. The panoramic views to the east, west, north and south of the Nebraska Sandhills is an amazing view that many will never experience.

Whether you're an outdoor enthusiast, a nature lover, or simply seeking tranquility, this 12.08-acre site allows you to create your ideal retreat. With Calamus River walk in access, close proximity to Calamus Reservoir you are ready to have a Great weekend getaway, hunting retreat or live on-site year around.



www.AmericanLegacyLandCo.com





More About this Property:

The Calamus Reservoir area to include the Calamus River is a haven for outdoor enthusiasts, renowned for its excellent hunting opportunities. Having walk in availability from your future property is rare to find in this area. Your access for deer, turkey, waterfowl, and other game species are available to you with this parcel right out your back door.

The warm water sloughs that boarder the northern property line allow for some of the best full year waterfowl hunting in the upper Midwest.

Multiple boat ramps are within 4 miles from this property to include Buckshot Bay, Nunda Shoals and Valley View Flats. Enjoy skiing, wakeboarding, surfing, fishing, or just cruising one of Nebraska's premier lakes, plus the additional wildlife area that offers hiking and birdwatching, regardless of season.

You can enjoy Tanking, Canoeing, Kayaking and fishing just steps away with your access to the Calamus River.

Tucked away from the hustle and bustle of city life, this parcel offers the peace you crave. Experience the tranquility of rural living while just a short drive from the amenities of nearby towns. Power is provided by Custer County Power plus the availability of High Seed Fiber Optic connections through Hamilton Communications.

The Barndominium is extremally well maintained inside and out to include a sprinkler system. Being partially furnished is an added bonus. The area in and around Calamus has proven to be a solid investment opportunity. The beauty and desirability of Calamus Reservoir to include the Calamus River makes this a highly sought-after parcel, giving you the confidence that your investment will appreciate over time.

Located 20 minutes from the charming town of Burwell, offering shopping, dining, and cultural attractions, and approximately 3 hours from Omaha, 2.5 hours from Lincoln, and 1.5 hours from Grand Island and Kearney, it makes a weekend getaway a breeze.

Take advantage of this once-in-a-lifetime opportunity to own a piece of Nebraska's natural beauty with unparalleled views of the Nebraska Sandhills prairie.

The property owner is requesting the parcel be viewed via private showing only. Please call, text, or email Bob Osborne at 402-660-4970 / bosborne@AmericanLegacyLandCo.com to schedule a showing.

Legal Description: 26 23 18 PT SE1/4NE1/4 & PT NE1/4SE1/4 SEC. 26-23-18 12.08 ACRES

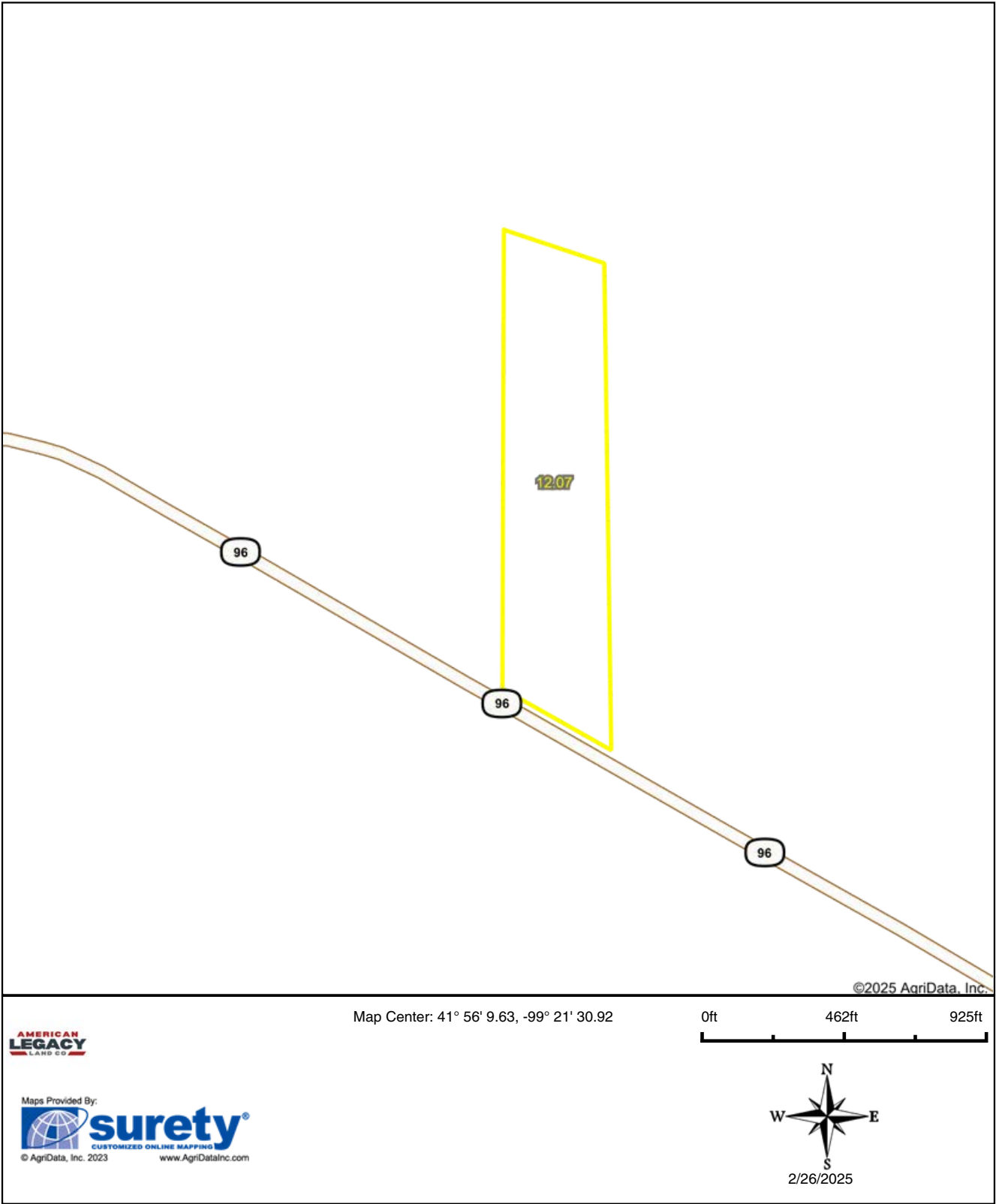
Taxes: \$1,426.56



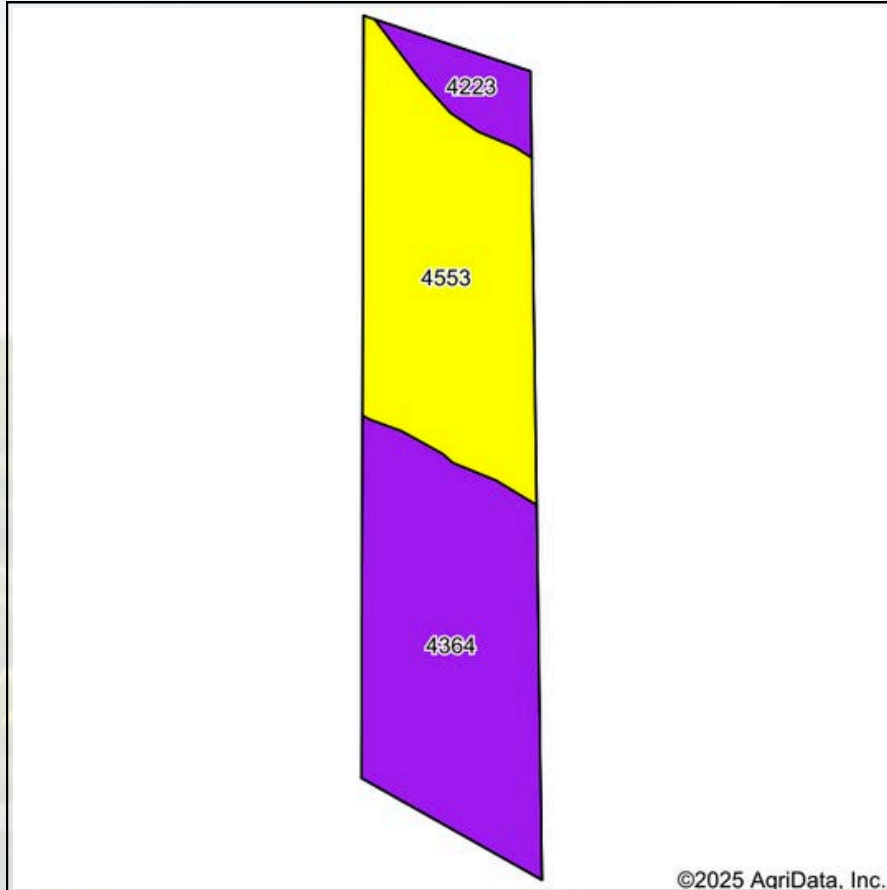
**GROW YOUR
LEGACY**



Overview Map



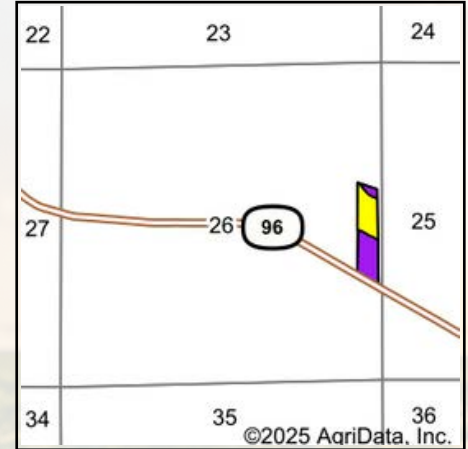
Soils Map



Soils data provided by USDA and NRCS.

Area Symbol: NE115, Soil Area Version: 23

Code	Soil Description	Acres	Percent of field	NonIrr Class Legend	NonIrr Class *c
4364	Ipape fine sand, terrace, 0 to 3 percent slopes	5.82	48.2%		Vle
4553	Elsmere loamy fine sand, 0 to 3 percent slopes	5.45	45.2%		IVw
4223	Bolent loamy fine sand, occasionally flooded	0.80	6.6%		VIw
					5.10



State: **Nebraska**
 County: **Loup**
 Location: **26-23N-18W**
 Township: **Kent**
 Acres: **12.07**
 Date: **2/26/2025**



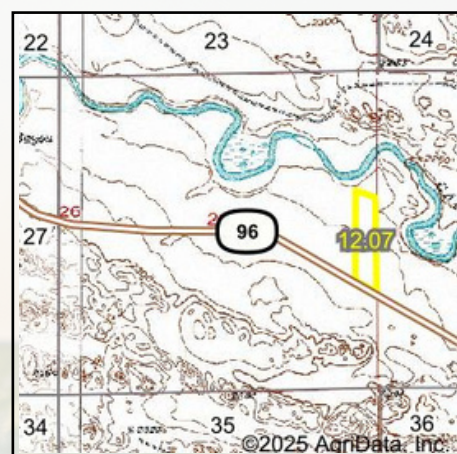
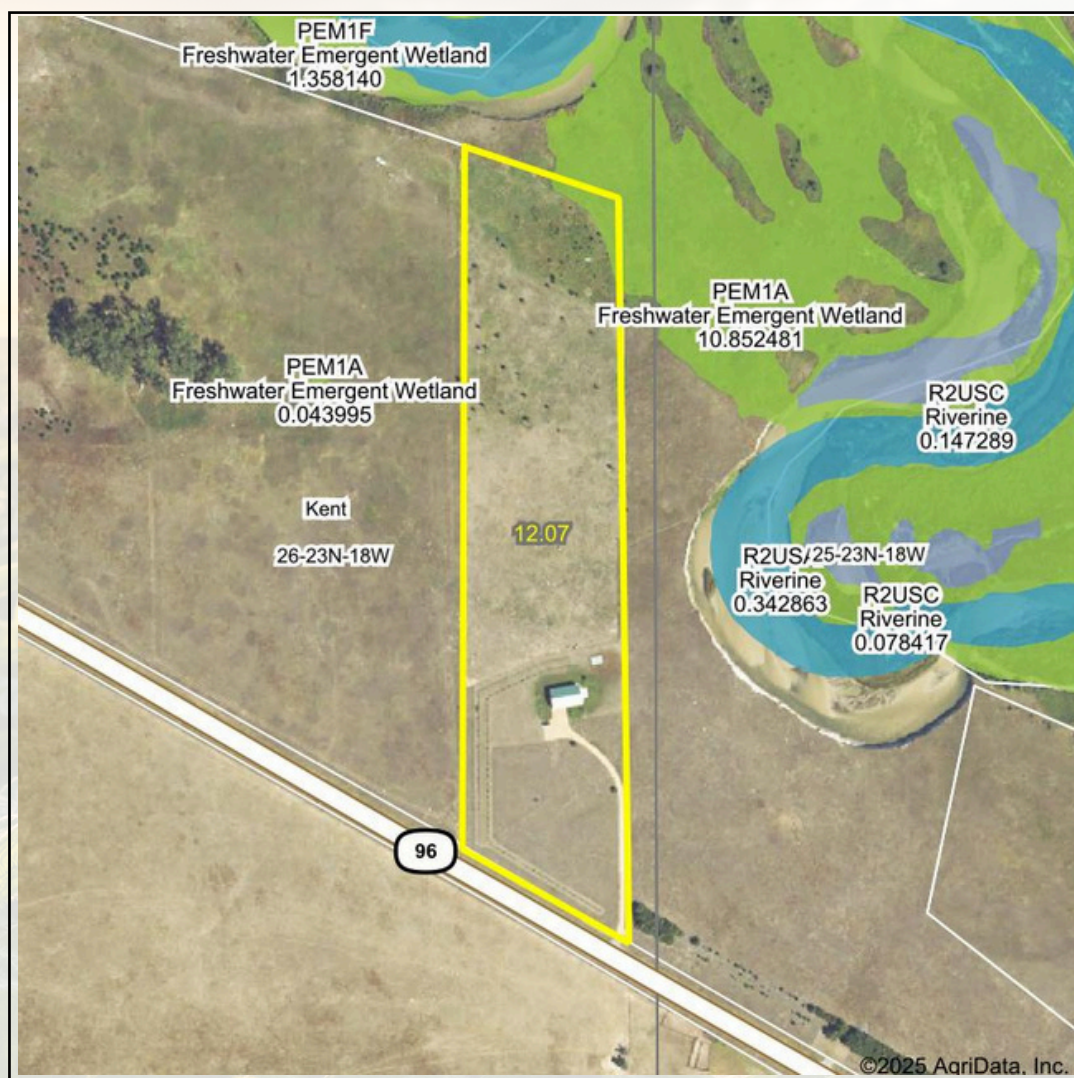
Maps Provided By:



surety
 CUSTOMIZED ONLINE MAPPING
 © AgriData, Inc. 2023 www.AgriDataInc.com



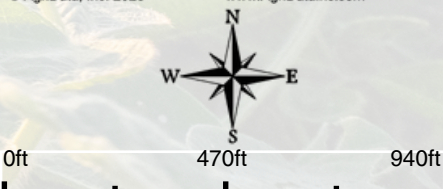
Wetlands Map



State: **Nebraska**
 Location: **26-23N-18W**
 County: **Loup**
 Township: **Kent**
 Date: **2/26/2025**



Maps Provided By:



Classification Code	Type	Acres
PEM1A	Freshwater Emergent Wetland	0.23
Total Acres		0.23

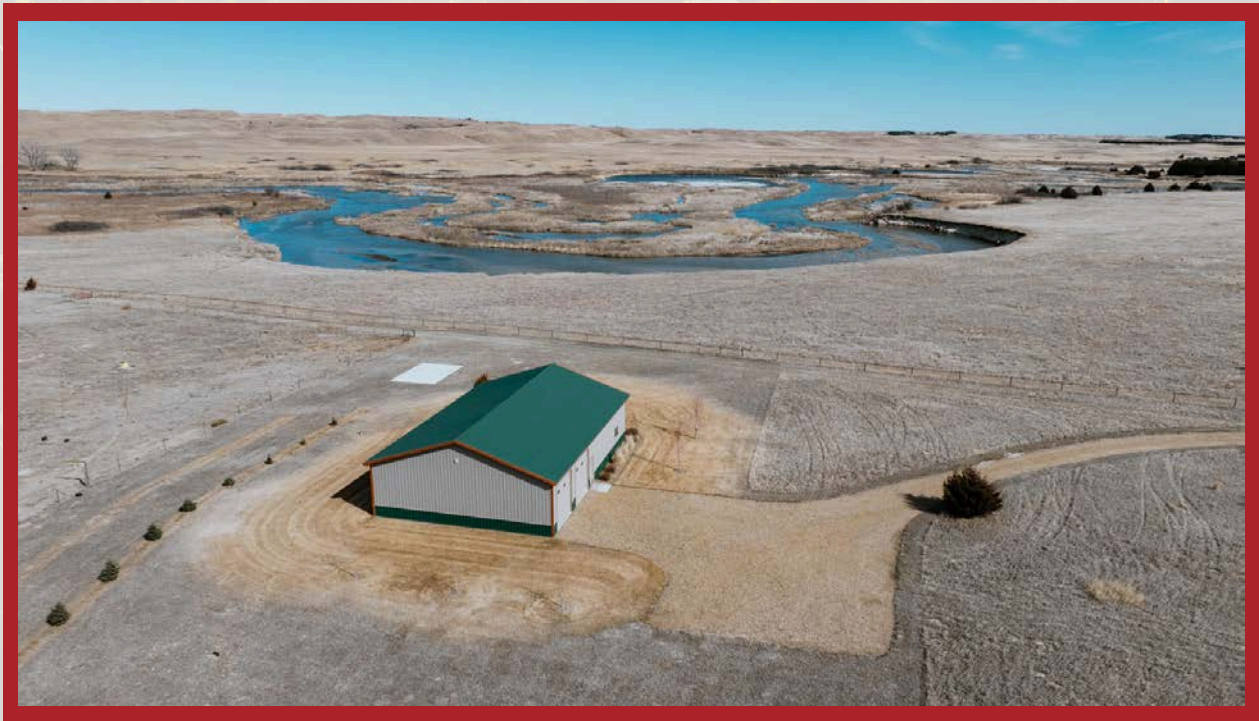
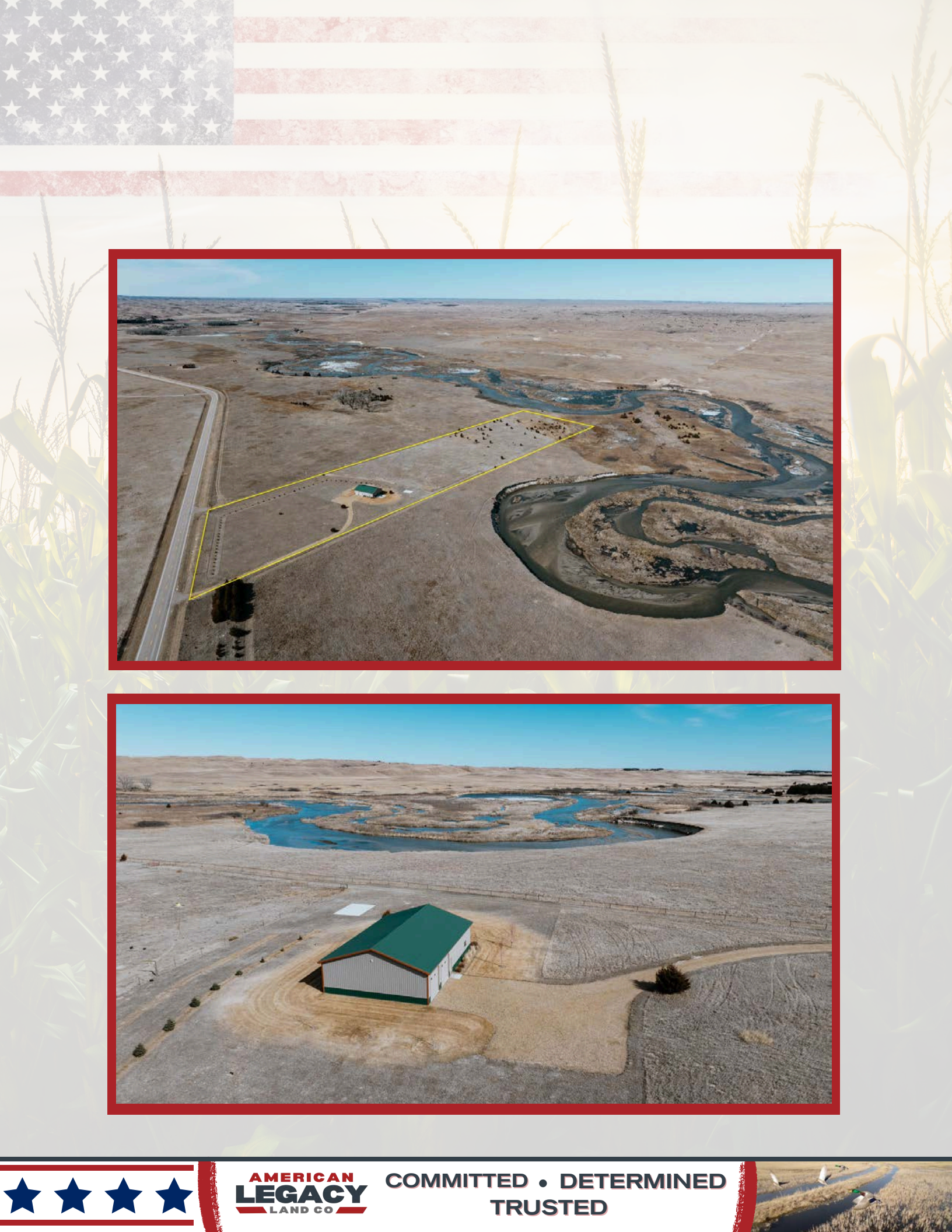
Data Source: National Wetlands Inventory website. U.S. DoI, Fish and Wildlife Service, Washington, D.C. <http://www.fws.gov/wetlands/>



**FARM • RANCH • RECREATION
HUNTING • DEVELOPMENT**

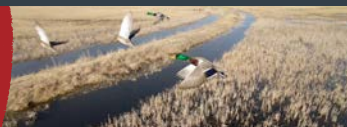


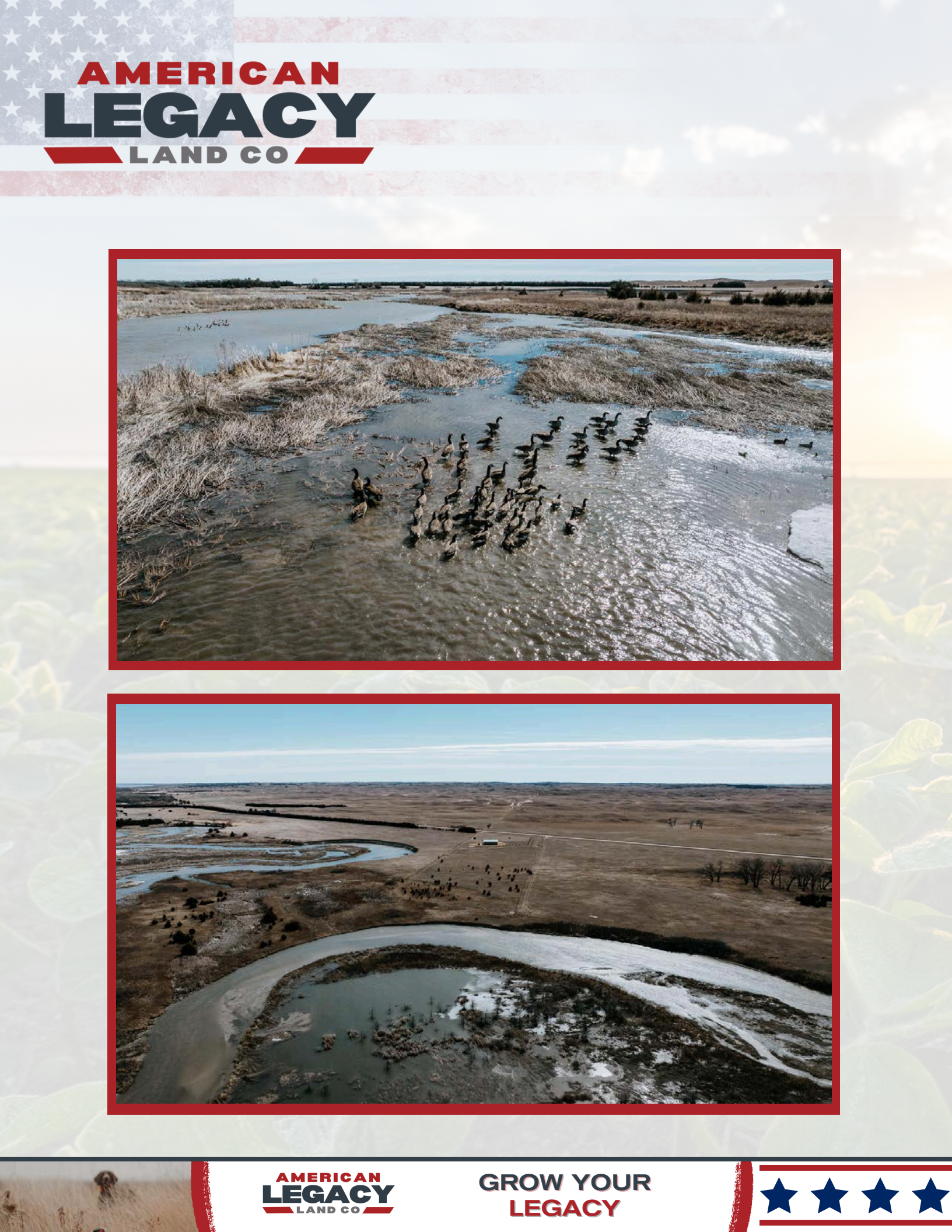




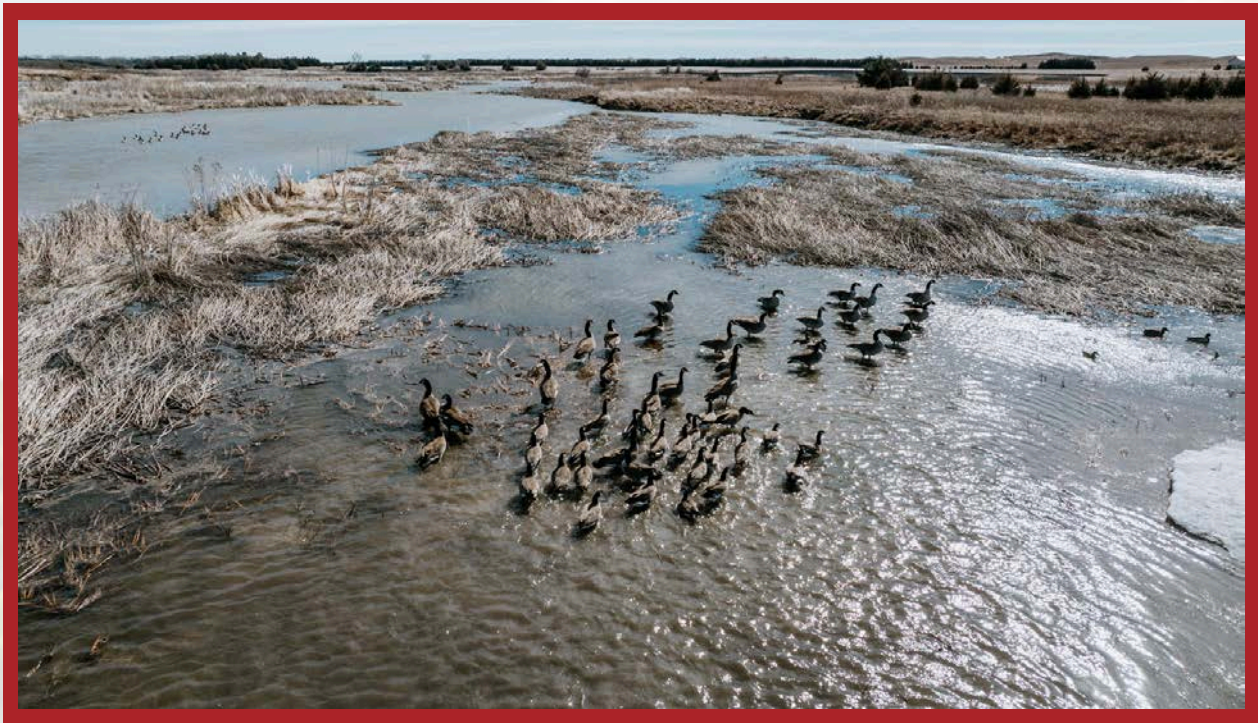
AMERICAN
LEGACY
LAND CO

COMMITTED • DETERMINED
TRUSTED





AMERICAN LEGACY LAND CO

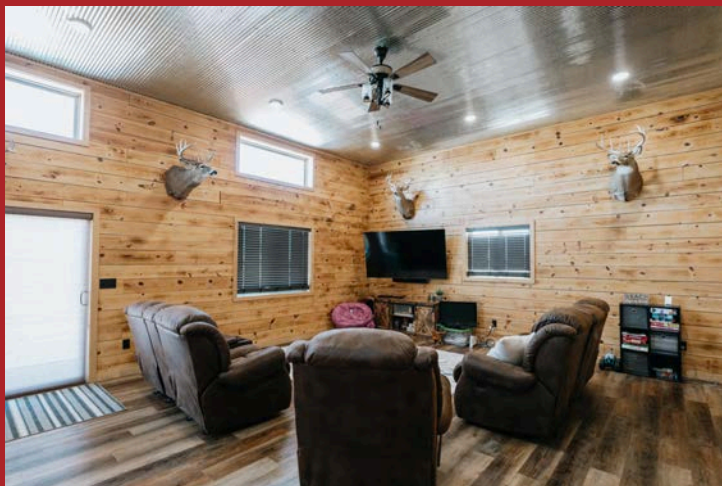
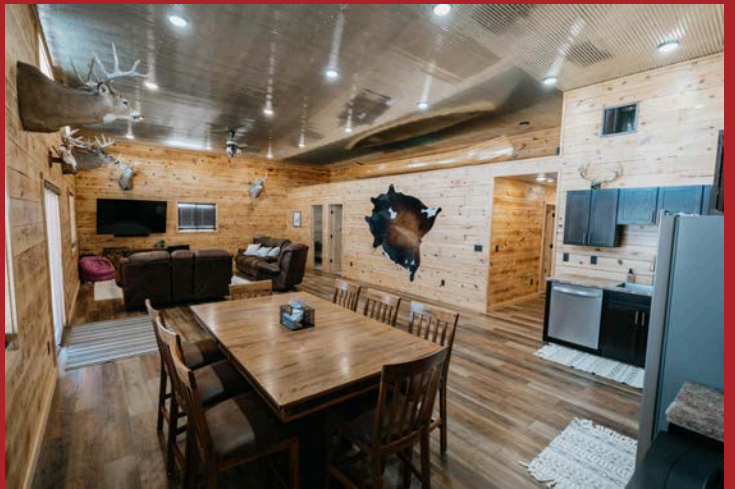
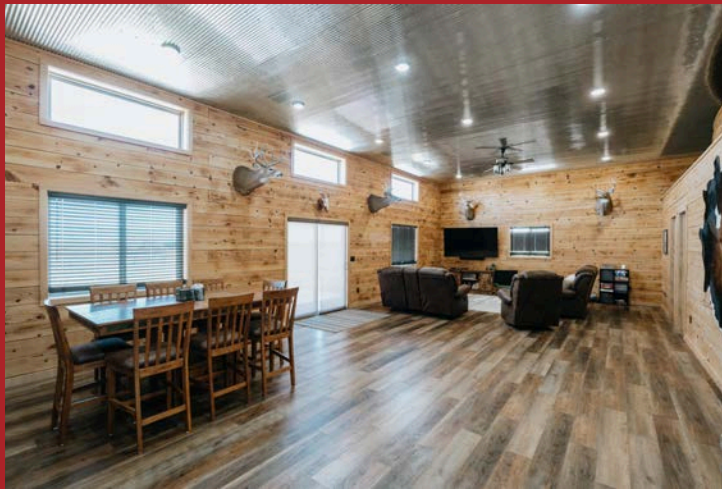




**AMERICAN
LEGACY**
LAND CO.

HELPING YOU BUY
AND SELL LAND







FARM • RANCH • RECREATION
HUNTING • DEVELOPMENT





About the Agent:

Bob Osborne is a man of the people. With an uncanny ability to connect with others, this land agent brings together buyers, sellers & investors with the utmost level of professionalism. Through open communication, Bob works to create the best possible outcome for all involved.

Having worked 40 years in the service industry, he knows what it takes to listen, educate and provide customers with what they need in a Land transaction.

Originally from Fort Hood, Texas, Bob went to school in Council Bluffs and attended the Nebraska College of Business. He spent many years in retail grocery management and wholesale distribution, working in everything from retail management, advertising, logistics, warehousing, marketing, sales and national account management. Before coming Nebraska Realty, he earned a Distinguished Service Award from Nebraska Grocery Industry.

Bob has been exposed to many types of businesses, including: farming, land and soil conservation, habitat creation, wildlife management programs, cattle operations and well water operations. He has a deep understanding of the rural landscape of the Midwest to include state, local, regional and national programs to assist in closing deals; as well as an understanding of contracts and negotiations. Big on community involvement Bob volunteers with many groups whenever time allows.



He enjoys all outdoor activities plus training his Labrador retriever "Hank" in upland, waterfowl and field trial events.

Bob lives with his wife, Kathy, in Omaha, Nebraska, but both will office from their property in Burwell, NE as they both have many customers in the area. Together, they have four grown children, Jennifer, Justin, Sara, and Dylan and 3 grandchildren Hallie, Cole & Harlee.

BOB OSBORNE, LAND AGENT



402-660-4970



bosborne@AmericanLegacyLandCo.com