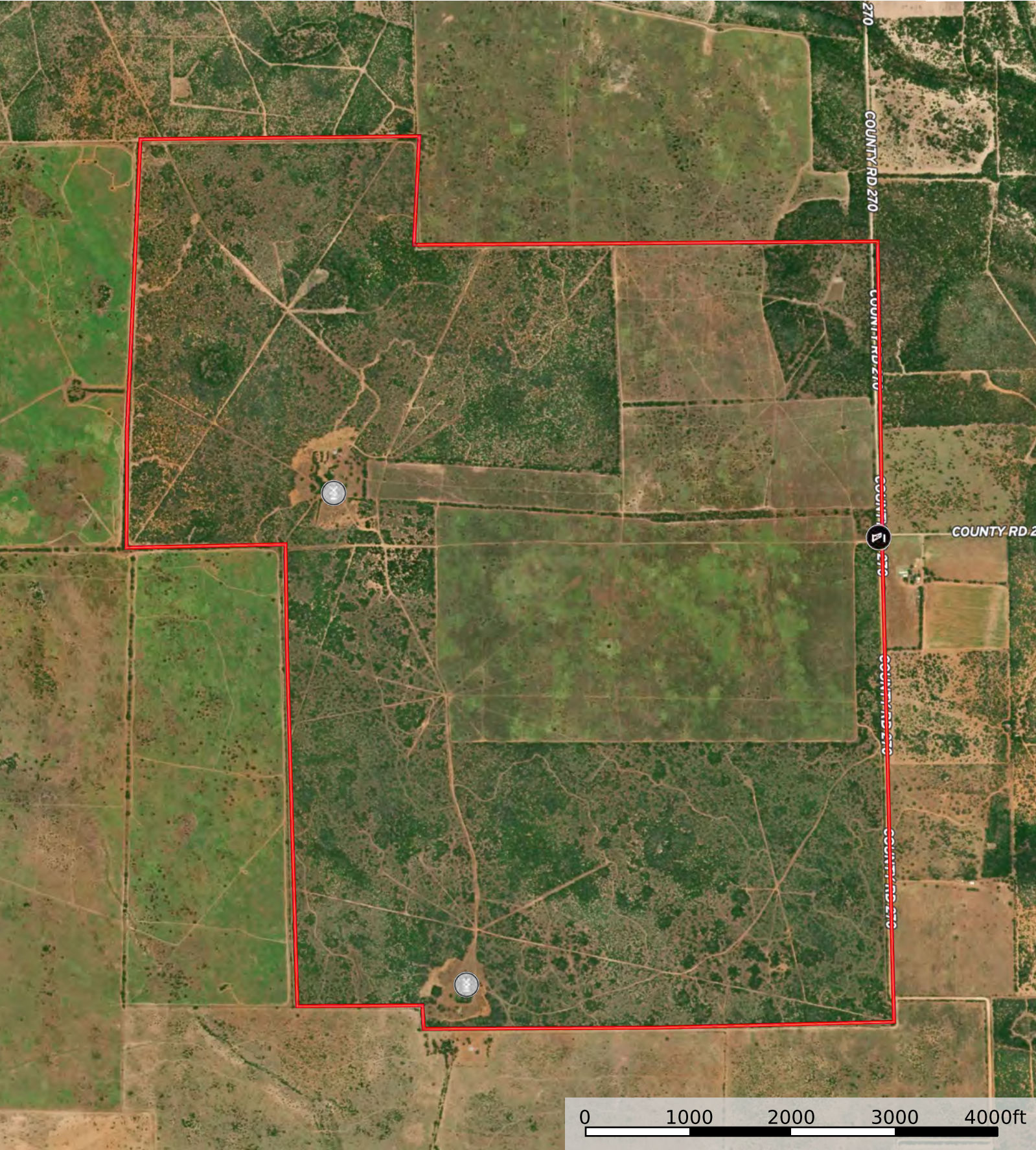
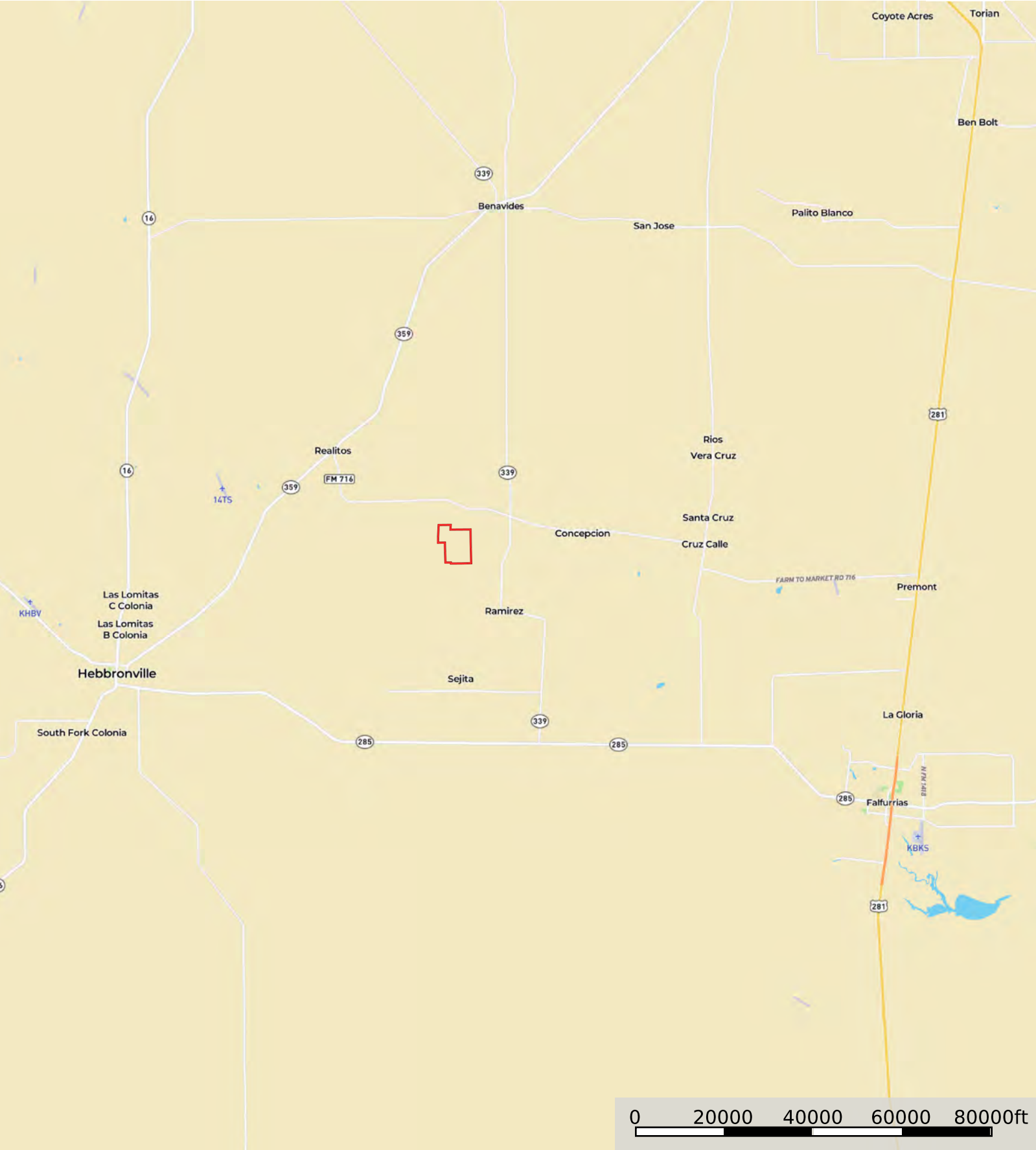



Montalvo Ranch
 Duval County, Texas, 1170 AC +/-



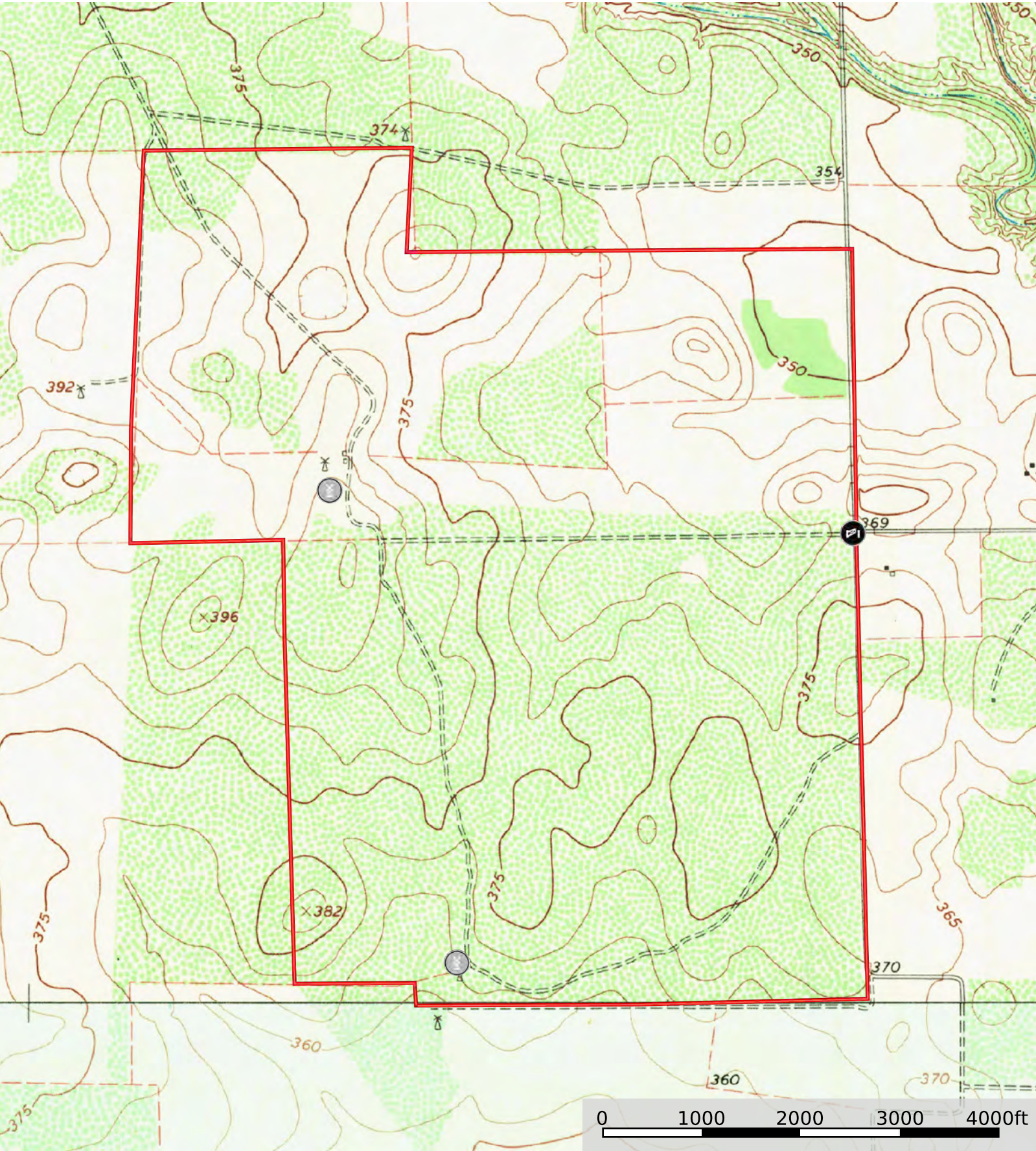
Gate Windmill Boundary

Montalvo Ranch
Duval County, Texas, 1170 AC +/-

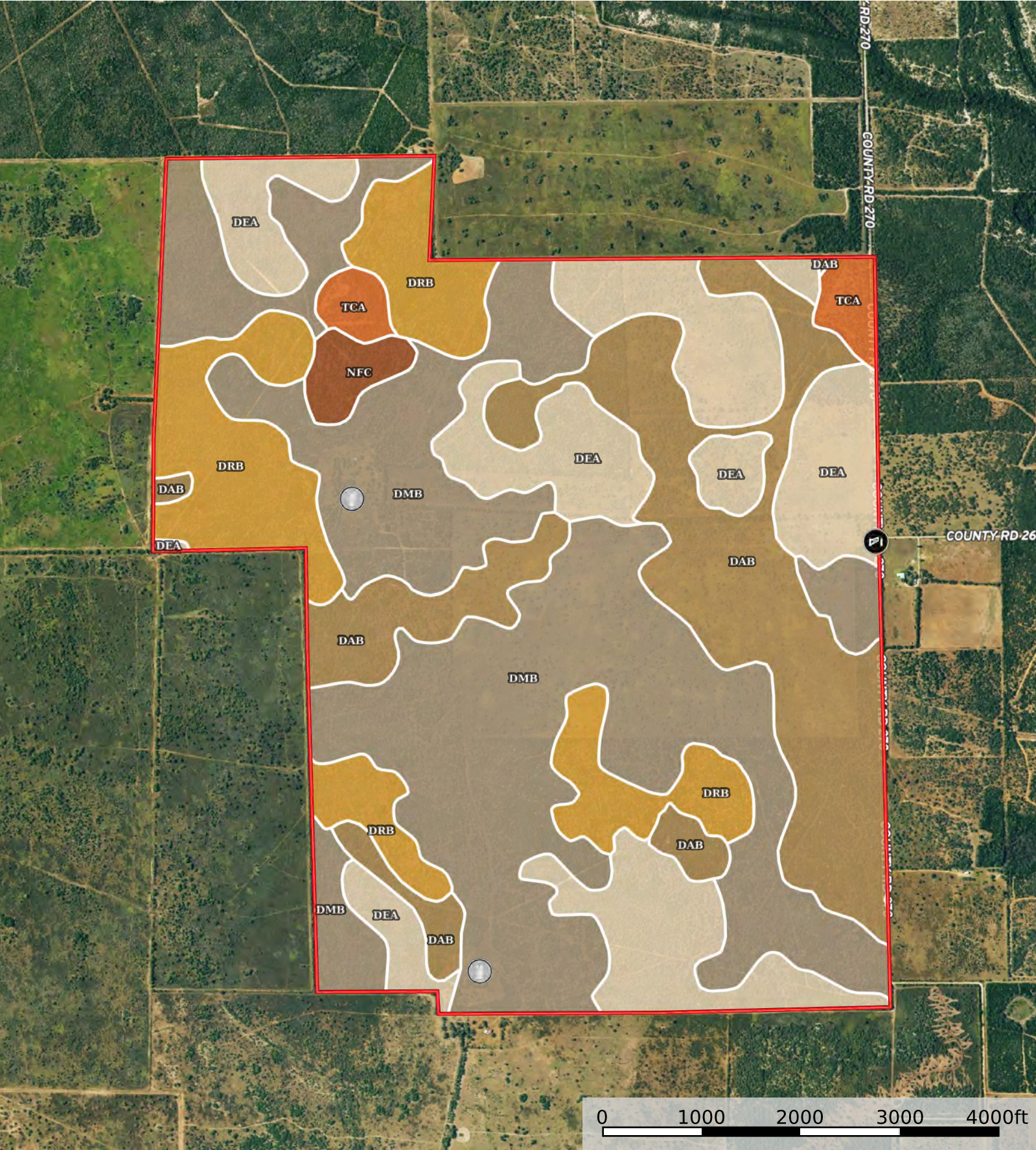


 Boundary

Montalvo Ranch
Duval County, Texas, 1170 AC +/-



Gate Windmill Boundary



Gate Windmill Boundary

|  Boundary 1174.94 ac

SOIL CODE	SOIL DESCRIPTION	ACRES	%	CPI	NCCPI	CAP
DmB	Delmita fine sandy loam, 0 to 3 percent slopes	478.8	40.75	0	28	3s
DeA	Delfina fine sandy loam, 0 to 2 percent slopes	252.9 5	21.53	0	41	3e
DaB	Delfina loamy fine sand, 0 to 2 percent slopes	243.7 3	20.74	0	37	3e
DRB	Delmita-Randado complex, 0 to 3 percent slopes	162.1 2	13.8	0	25	3s
TcA	Tiocano clay, dry, 0 to 1 percent slopes, occasionally ponded	22.02	1.87	0	34	4w
NfC	Nueces fine sand, 0 to 3 percent slopes	15.32	1.3	0	32	3e
TOTALS		1174. 94(*)	100%	-	32.42	3.02









(*) Total acres may differ in the second decimal compared to the sum of each acreage soil. This is due to a round error because we only show the acres of each soil with two decimal.

Capability Legend

Increased Limitations and Hazards

Decreased Adaptability and Freedom of Choice Users

Land, Capability

								
	1	2	3	4	5	6	7	8
'Wild Life'	•	•	•	•	•	•	•	•
Forestry	•	•	•	•	•	•	•	
Limited	•	•	•	•	•	•	•	
Moderate	•	•	•	•	•	•		
Intense	•	•	•	•	•			
Limited	•	•	•	•				
Moderate	•	•	•					
Intense	•	•						
Very Intense	•							

Grazing Cultivation

(c) climatic limitations (e) susceptibility to erosion

(s) soil limitations within the rooting zone (w) excess of water