



## Farmland, Investment & Building Site

Highway 1, Keosauqua, IA 52565

**Hawkeye Farm  
Mgmt & Real Estate**

**Price:** \$314,825

**Acres:** 35 +/-

**Price/Acre:** \$8,995



## PROPERTY FEATURES

- 33 +/- Tillable Acres with a 49.2 CSR2 Rented at \$200 per Acre for the 2025 Growing Season
- Building Sites on Highway 1
- Located Near Roberts State Park and the Des Moines River
- Estimated Annual Taxes \$446

## CONTACT US



**Hawkeye  
Farm Mgmt &  
Real Estate**



(641) 932-7796



Hawkeye@UCIowa.com



www.UCIowa.com



1010 S Clinton  
Albia, IA 52531



**Luke Nissen**

Realtor®

(712) 304-4827

Luke@uciowa.com

Licensed In Iowa

Ryan Ammons, Broker, Licensed in Iowa. Alan Ammons, Broker Associate, Licensed in Iowa & Missouri. All Agents Licensed in Iowa. The above information, although believed to be accurate, is not warranted or guaranteed by the owner, listing firm, or listing agent.

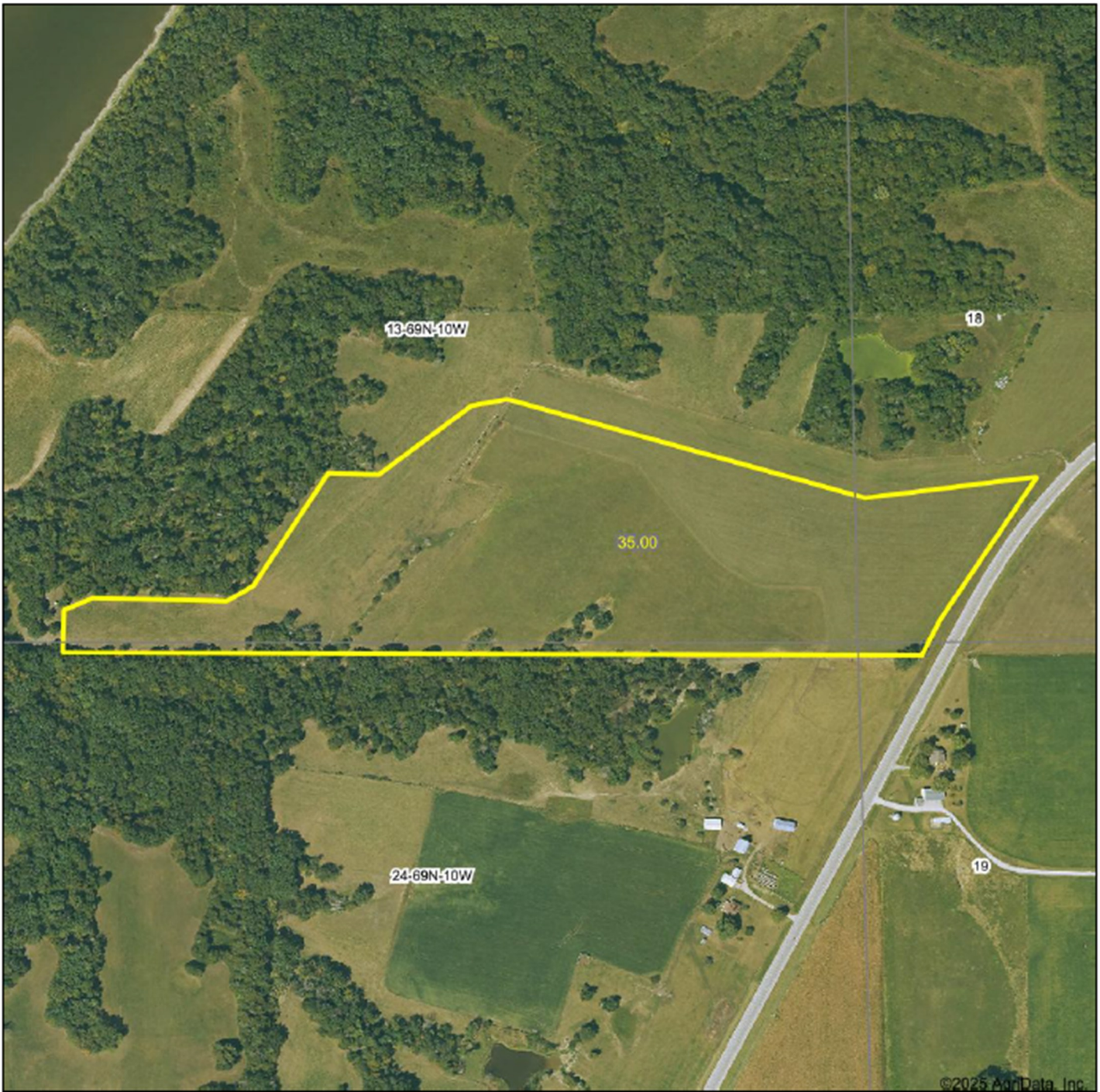


# PROPERTY MAP



**Hawkeye  
Farm Mgmt &  
Real Estate**

**Aerial Map**  
Boundary Lines Are Approximate



**Hawkeye Farm Mgmt & Real Estate**



22 N MAIN, ABILEE, IA Phone: 641-922-1796  
Email: hawkeye@ucd.com  
On the web: www.uncountry.com  
www.hawkeyefarm.com

Boundary Center: 40° 46' 13.43, -91° 57' 9.13

0ft 497ft 995ft

**13-69N-10W**  
**Van Buren County**  
**Iowa**



Maps Provided By:  
 **surety**  
CUSTOMER ONLINE MAPPING  
© AgriData, Inc. 2023 www.AgridataInc.com

3/21/2025