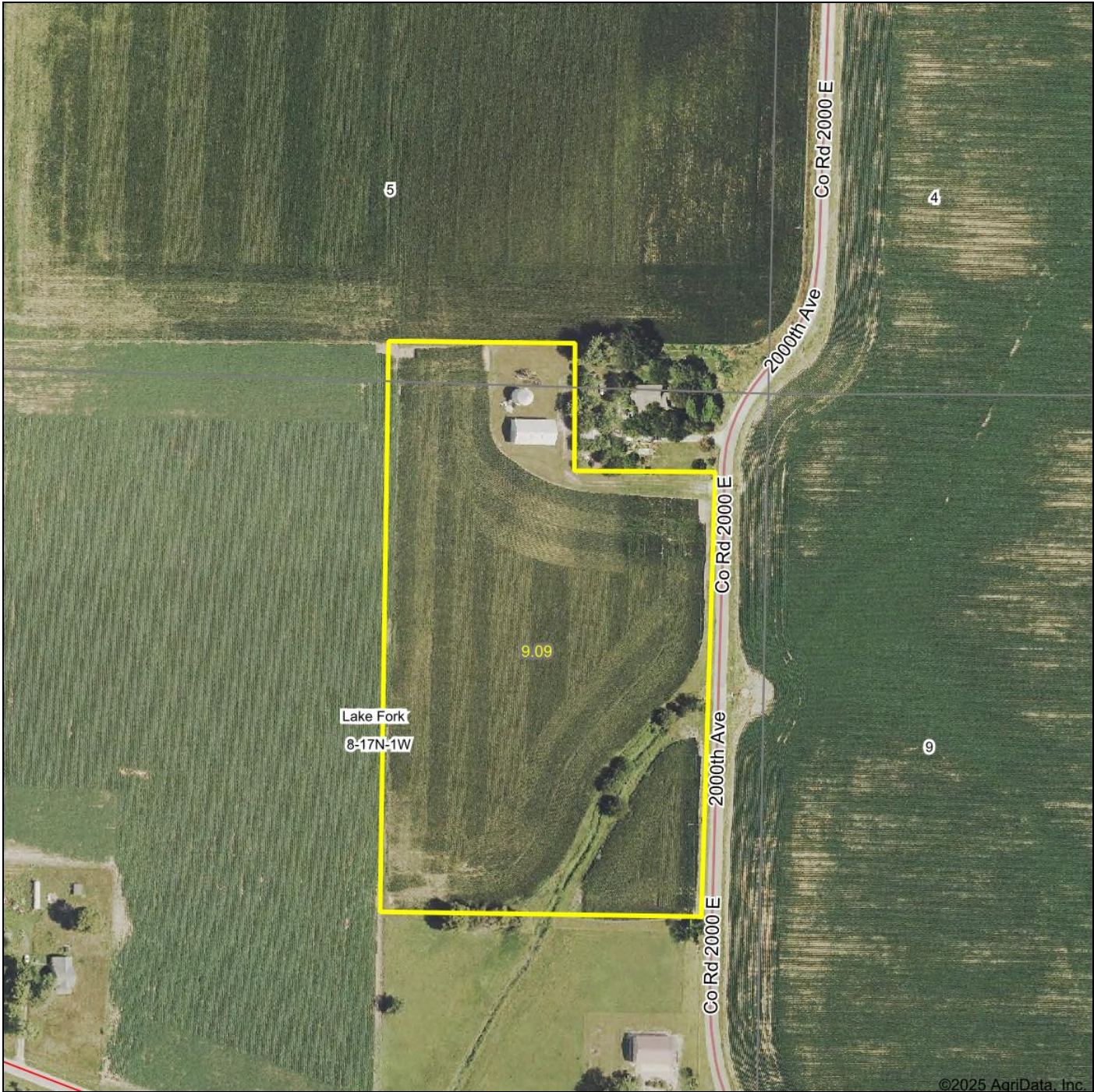


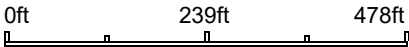
Aerial Map



©2025 AgriData, Inc.



Boundary Center: 39° 56' 41.53, -89° 13' 9.17



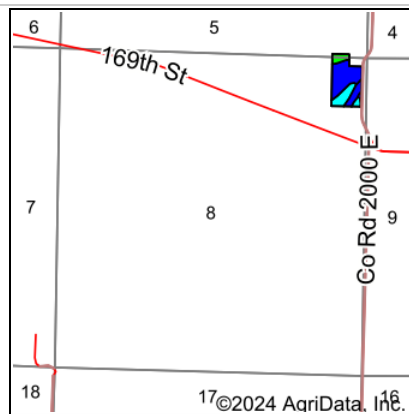
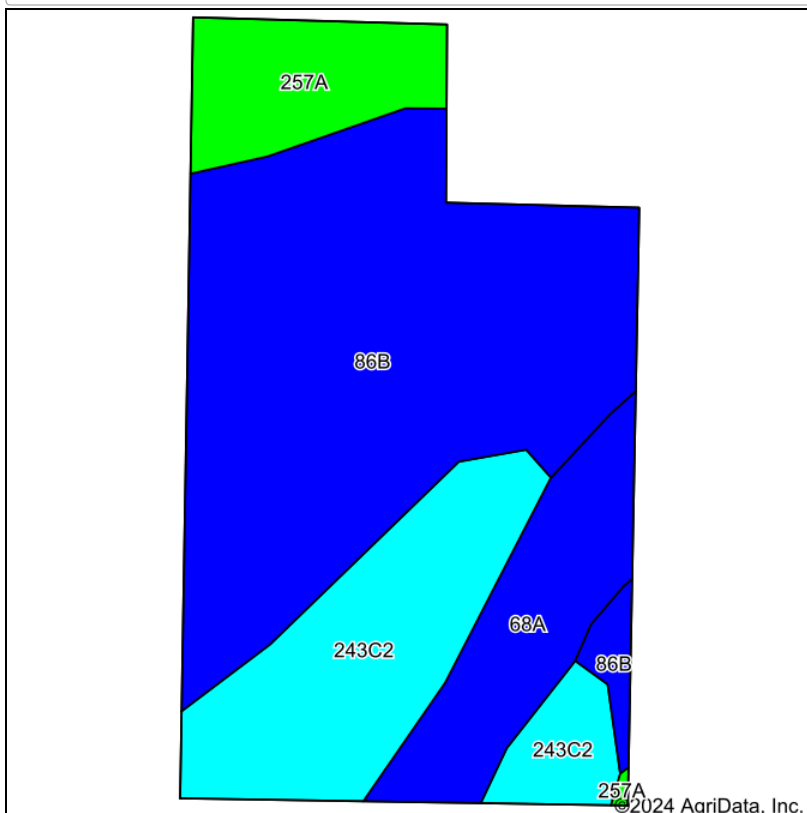
4/4/2025

FIRST ILLINOIS
AG GROUP



8-17N-1W
Logan County
Illinois

Soils Map



State: **Illinois**
 County: **Logan**
 Location: **8-17N-1W**
 Township: **Lake Fork**
 Acres: **9.09**
 Date: **10/1/2024**

FIRST ILLINOIS
AG GROUP

Maps Provided By:



Soils data provided by USDA and NRCS.

Area Symbol: IL107, Soil Area Version: 19

Code	Soil Description	Acres	Percent of field	Il. State Productivity Index Legend	*Corn Bu/A	*Soybeans Bu/A	*Wheat Bu/A	*Oats Bu/A ^b	*Sorghum ^c Bu/A	*Grass-legume ^e hay, T/A	*Crop productivity index for optimum management
**86B	Osco silt loam, 2 to 5 percent slopes	4.92	54.1%		**187	**59	**74	**100	0	**6.80	**138
**243C2	St. Charles silt loam, 5 to 10 percent slopes, eroded	2.13	23.4%		**156	**48	**60	**81	0	**4.70	**113
**68A	Sable silty clay loam, 0 to 2 percent slopes	1.17	12.9%		**192	**63	**74	**99	0	**5.80	**143
257A	Clarksdale silt loam, 0 to 2 percent slopes	0.87	9.6%		174	56	69	89	0	5.30	128
Weighted Average					179.1	56.7	70.2	94.4	*-	6	131.8

Table: Optimum Crop Productivity Ratings for Illinois Soil EFOTG are sourced from Bulletin 811 calculated Map Unit Base Yield Indices, and adjusted (Adj) for slope, erosion, and surface texture. Publication Date: 02-08-2023

Crop yields and productivity (B811 EFOTG) are maintained at the following USDA web site: 2023 Illinois Soil Productivity and Yield Indices: <https://efotg.sc.egov.usda.gov/#/state/IL/documents/section=2&folder=52809>

* The flood/pond factor has been removed for B811 indexes and yields.

** Base indexes from Bulletin 811 adjusted for slope, erosion, and surface texture according to the Il. Soils EFOTG

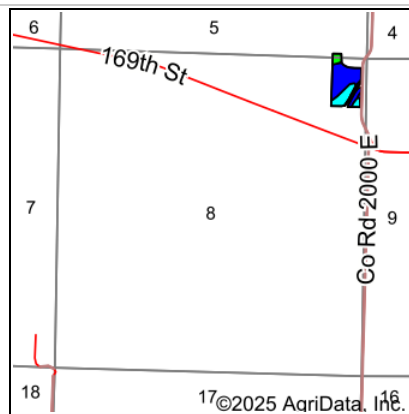
^b Soils in the southern region were not rated for oats and are shown with a zero "0".

^c Soils in the northern region or in both regions were not rated for grain sorghum and are shown with a zero "0".

^e Soils in the well drained group were not rated for grass-legume and are shown with a zero "0".

Soils data provided by USDA and NRCS. Soils data provided by University of Illinois at Champaign-Urbana.

Soils Map



State: **Illinois**
 County: **Logan**
 Location: **8-17N-1W**
 Township: **Lake Fork**
 Acres: **7.86**
 Date: **4/4/2025**

**FIRST ILLINOIS
AG GROUP**

Maps Provided By:



Soils data provided by USDA and NRCS.

Area Symbol: IL107, Soil Area Version: 20

Code	Soil Description	Acres	Percent of field	Il. State Productivity Index Legend	*Corn Bu/A	*Soybeans Bu/A	*Wheat Bu/A	*Oats Bu/A ^b	*Sorghum ^c Bu/A	*Grass-legume ^e hay, T/A	*Crop productivity index for optimum management
**86B	Osco silt loam, 2 to 5 percent slopes	4.46	56.8%		**187	**59	**74	**100	0	**7.00	**138
**243C2	St. Charles silt loam, 5 to 10 percent slopes, eroded	2.10	26.7%		**156	**48	**60	**81	0	**5.00	**113
**68A	Sable silty clay loam, 0 to 2 percent slopes	0.74	9.4%		**192	**63	**74	**99	0	**6.00	**143
257A	Clarksdale silt loam, 0 to 2 percent slopes	0.56	7.1%		174	56	69	89	0	5.00	128
Weighted Average					178.3	56.2	69.9	94	*-	6.2	131.1

Table: Optimum Crop Productivity Ratings for Illinois Soil EFOTG are sourced from Bulletin 811 calculated Map Unit Base Yield Indices, and adjusted (Adj) for slope, erosion, and surface texture. Publication Date: 01-28-2025

Crop yields and productivity (B811 EFOTG) are maintained at the following USDA web site: 2023 Illinois Soil Productivity and Yield Indices: <https://efotg.sc.egov.usda.gov/#/state/IL/documents/section=2&folder=52809>

* The flood/pond factor has been removed for B811 indexes and yields.

** Base indexes from Bulletin 811 adjusted for slope, erosion, and surface texture according to the Il. Soils EFOTG

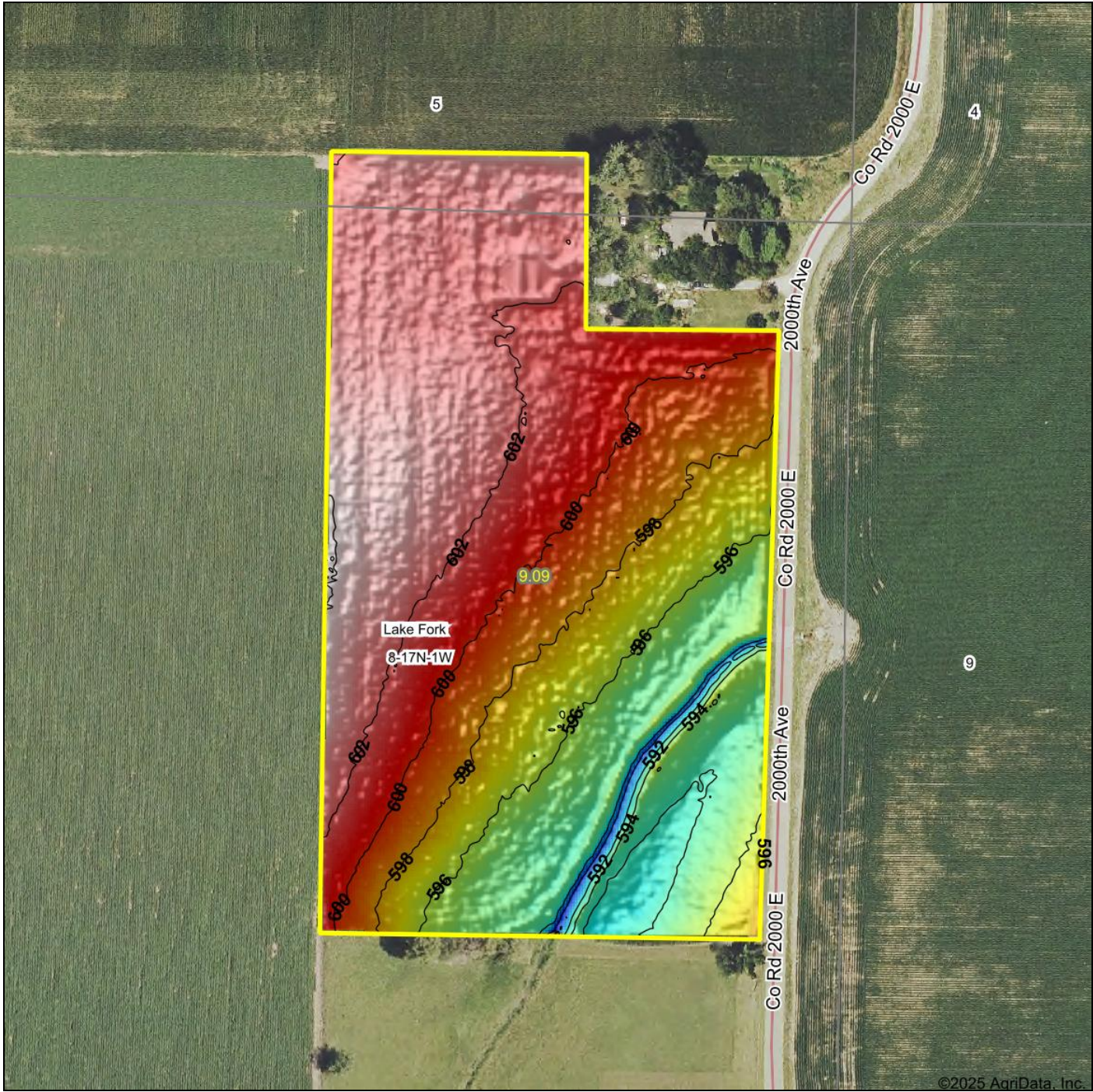
^b Soils in the southern region were not rated for oats and are shown with a zero "0".

^c Soils in the northern region or in both regions were not rated for grain sorghum and are shown with a zero "0".

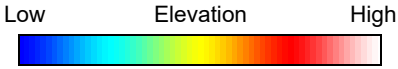
^e Soils in the well drained group were not rated for grass-legume and are shown with a zero "0".

Soils data provided by USDA and NRCS. Soils data provided by University of Illinois at Champaign-Urbana.

Topography Hillshade



©2025 AgriData, Inc.



FIRST ILLINOIS
AG GROUP

Maps Provided By:



© AgriData, Inc. 2023

www.AgriDataInc.com

Source: USGS 1 meter dem
Interval(ft): 2

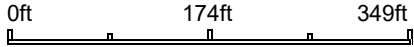
Min: 589.5

Max: 604.2

Range: 14.7

Average: 599.2

Standard Deviation: 3.28 ft



4/4/2025

8-17N-1W
Logan County
Illinois

Boundary Center: 39° 56' 41.53, -89° 13' 9.17